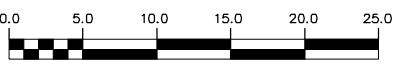
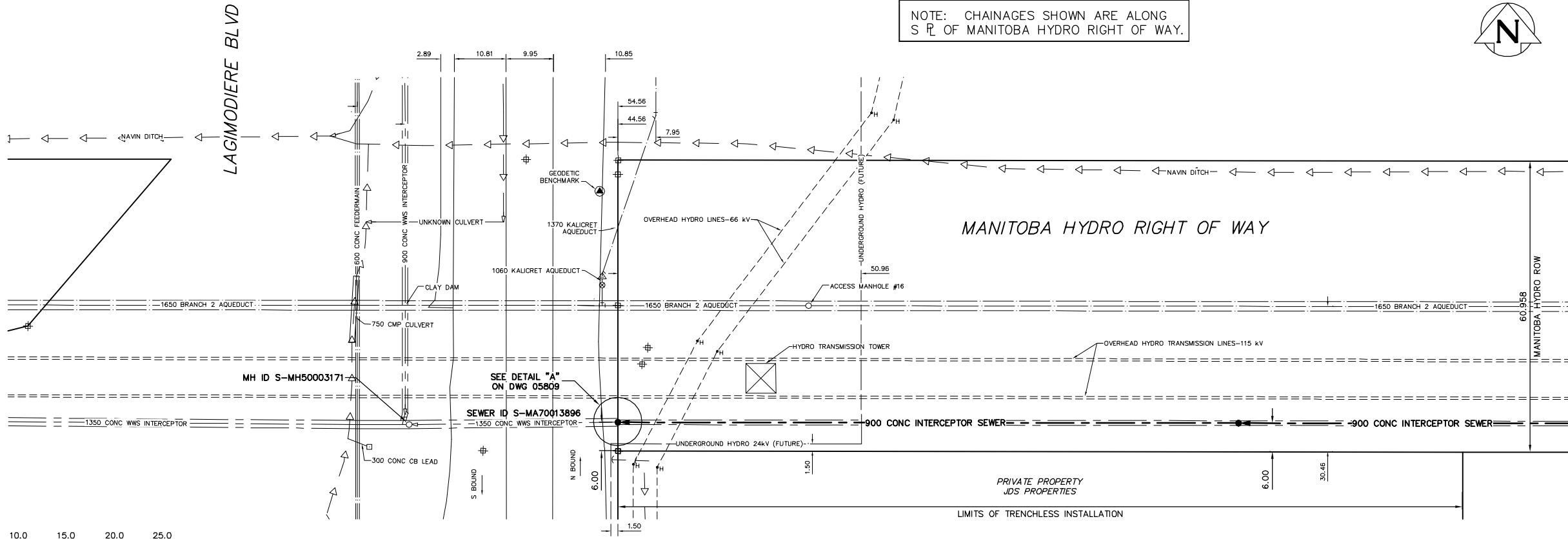


NOTE: CHAINAGES SHOWN ARE ALONG S R OF MANITOBA HYDRO RIGHT OF WAY.



- CONSTRUCTION NOTES:
- BACKFILL TO BE CLASS 4 UNLESS OTHERWISE NOTED OR AS DIRECTED BY THE CONTRACT ADMINISTRATOR.
 - INSTALL INTERCEPTOR SEWER BY TRENCH METHOD UNLESS OTHERWISE NOTED ON DRAWING.
 - ALL MATERIALS SHALL CONFORM TO CITY OF WINNIPEG STANDARD CONSTRUCTION SPECIFICATIONS.
 - DO NOT STOCKPILE MATERIALS, OPERATE EQUIPMENT AND VEHICLES ON OR CROSS OVER BRANCH 2 AQUADUCT.



CAUTION: OVERHEAD HIGH VOLTAGE WIRES

MATCHLINE 4+00
SEE DWG. 05808

METRIC
WHOLE NUMBERS INDICATE MILLIMETRES
DECIMALIZED NUMBERS INDICATE METRES

WARNING
IF POWER EQUIPMENT OR EXPLOSIVES ARE TO BE USED FOR EXCAVATION ON THIS PROJECT THE CONTRACTOR MUST:
1) NOTIFY THE GAS COMPANY OF THE PROPOSED LOCATION OF EXCAVATION.
2) TAKE PRECAUTION TO AVOID DAMAGE TO GAS COMPANY INSTALLATIONS.
SEE PROVINCIAL REGULATION 210/72 FOR DETAILS

200 WM	WATERMAIN	200 WM	SL, HYDRO	150 WM	WATERMAIN	150 WM	LOCATION APPROVED	B.M. ELEV.	FIELD BOOK #	CITY OF WINNIPEG WATER AND WASTE ENGINEERING DIVISION	ENGINEER'S SEAL ORIGINAL SIGNED BY S.R.J. COURNOYER 07/01/12	THE CITY OF WINNIPEG WATER AND WASTE DEPARTMENT ST. BONIFACE INTERCEPTOR EXTENSION EASEMENT (S OF NAVIN DRAIN) LAGIMODIERE BOULEVARD TO 200 m E OF LAGIMODIERE BOULEVARD	SHEET 1 OF 3 CITY DRAWING NUMBER 05807
525 LDS	LAND DRAINAGE SEWER	525 LDS	50 GAS	50 GAS	300 LDS	LAND DRAINAGE SEWER	300 LDS	POSTED TO LIS	DESIGNED BY SC CHECKED BY TW DRAWN BY PB/CJH APPROVED BY KZ HOR. SCALE 1:500 VERTICAL SCALE 1:50 RELEASED FOR CONSTRUCTION NO. REVISIONS DATE BY DATE 2007 01 12				
375 WWS	WASTEWATER SEWER	375 WWS	SURVEY BAR	250 WWS	250 WWS	WASTEWATER SEWER	250 WWS	SUPV. U/G STRUCTURES COMMITTEE DATE		NOTE: LOCATION OF UNDERGROUND STRUCTURES AS SHOWN ARE BASED ON THE BEST INFORMATION AVAILABLE BUT NO GUARANTEE IS GIVEN THAT ALL EXISTING UTILITIES ARE SHOWN OR THAT THE GIVEN LOCATIONS ARE EXACT. CONFIRMATION OF EXISTENCE AND EXACT LOCATION OF ALL SERVICES MUST BE OBTAINED FROM THE INDIVIDUAL UTILITIES BEFORE PROCEEDING WITH CONSTRUCTION.			
MANHOLE	MANHOLE	MANHOLE	FENCE	FENCE	FENCE	FENCE	FENCE	PRIVATE PROPERTY JDS PROPERTIES LIMITS OF TRENCHLESS INSTALLATION					
CATCH BASIN	CATCH BASIN	CATCH BASIN	POLE - HYDRO, MTS	POLE - HYDRO, MTS	POLE - HYDRO, MTS	POLE - HYDRO, MTS	POLE - HYDRO, MTS	UNDERGROUND HYDRO 24kV (FUTURE)					
CURB INLET	CURB INLET	CURB INLET	CURB STOP	CURB STOP	CURB STOP	CURB STOP	CURB STOP	OVERHEAD HYDRO TRANSMISSION LINES-115 kV					
JUNCTIONS	JUNCTIONS	JUNCTIONS	GUY ANCHOR	GUY ANCHOR	GUY ANCHOR	GUY ANCHOR	GUY ANCHOR	OVERHEAD HYDRO LINES-66 kV					
CULVERT	CULVERT	CULVERT	LIGHT STANDARD	LIGHT STANDARD	LIGHT STANDARD	LIGHT STANDARD	LIGHT STANDARD	UNDERGROUND HYDRO (FUTURE)					
ANODE	ANODE	ANODE	TREE	TREE	TREE	TREE	TREE	ACCESS MANHOLE #16					
EXISTING	LEGEND-PLAN	PROPOSED	EXISTING	LEGEND-PLAN	PROPOSED	EXISTING	LEGEND-PROFILE	1370 KALICRET AQUEDUCT 1060 KALICRET AQUEDUCT 1650 BRANCH 2 AQUEDUCT					