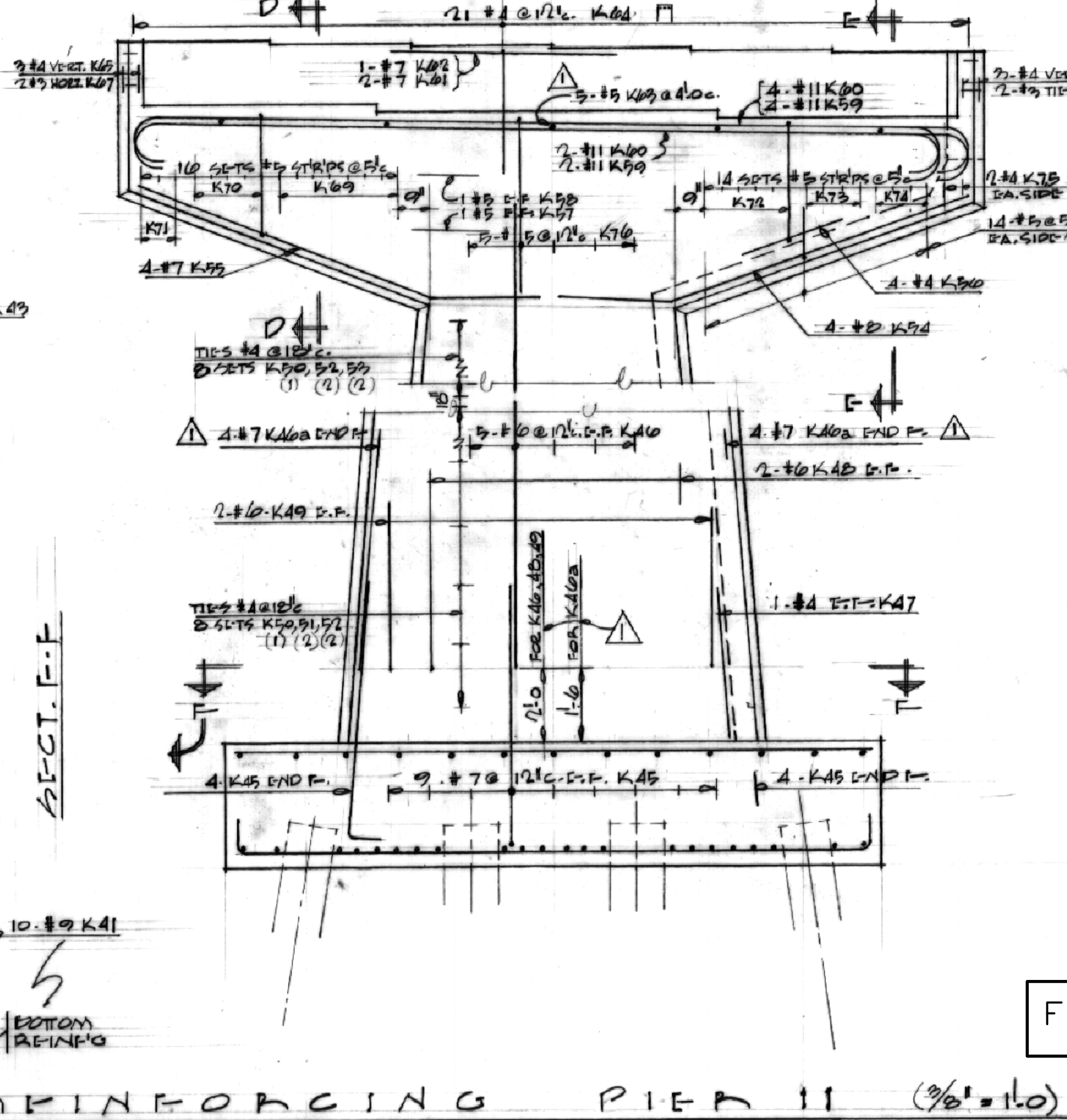
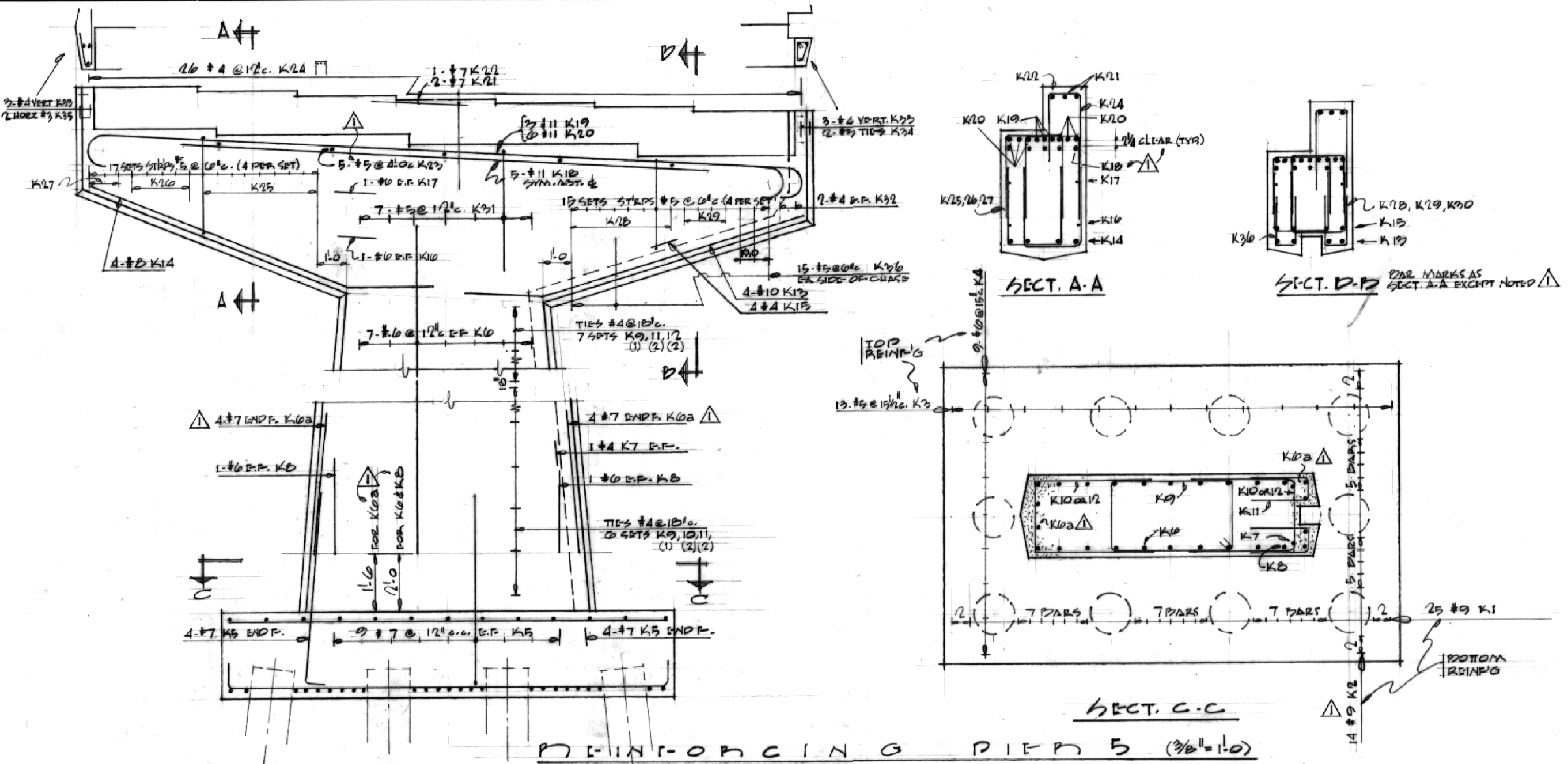
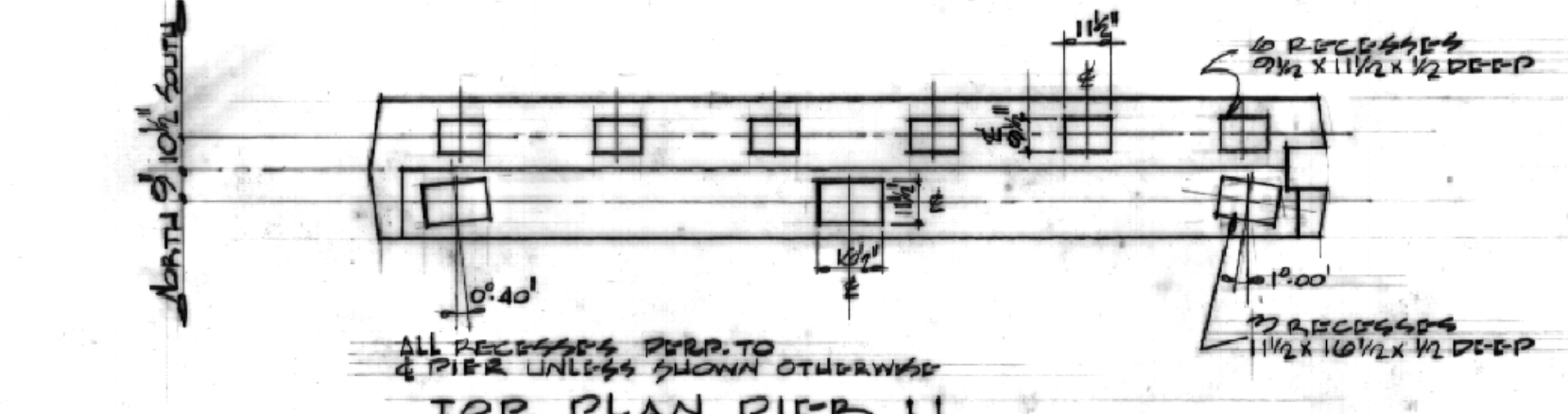
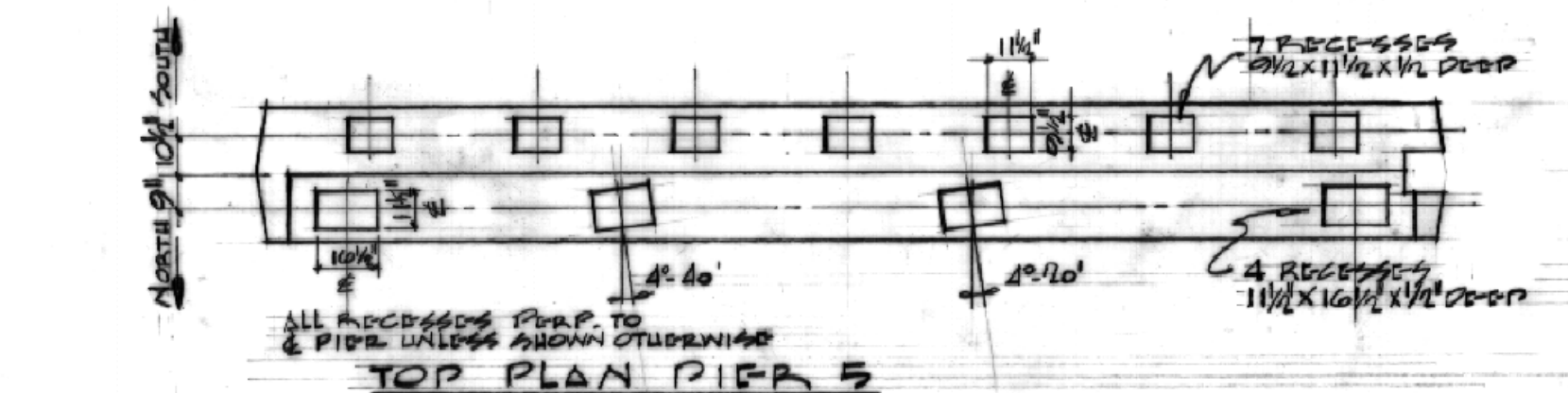


**ELEVATION PIERS 5 & 11**  
1/4" = 1'-0"  
PIERS SAME EXCEPT AS OTHERWISE SHOWN.  
SEE P&I AND P&R FOR DETAILS OF CHASE,  
PIPE SUPPORT ROCKETS ETC.

**END VIEW**



FOR REFERENCE ONLY



LICENSED TO PRACTISE AS A  
PROFESSIONAL ENGINEER IN  
THE PROVINCE OF ONTARIO.  
MY LICENSE EXPIRES DEC. 31, 1968

**NOTE:**  
CONST. JOINTS OTHER THAN THOSE SHOWN MUST BE  
APPROVED BY THE ENGINEER. SUCH JOINTS SHALL  
BE FORMED SO AS TO GIVE A CLEAN STRAIGHT-LINE JOINT.  
SULPHATE-RESISTING CEMENT SHALL BE USED IN  
ALL CONC. BELOW CAPS. P&I.  
FOR REINFORCING SCHED. SEE DWG. P. 5000-110  
P&I. RECESSES SHALL BE ACCURATE AS TO LOCATION  
& SHALL BE TRULY HORIZONTAL.  
APPROXIMATIONS S.E.F. EACH FACE  
1" CHAMFER ON ALL EXPOSED CORNERS OF STEM & BEAM EXCEPT CHASE.

DATE	ISSUE No.	REV. No.	DESCRIPTION	DRAWN BY
APR 14/68	2		AS-BUILT FOR CONSTRUCTION	M.M.C.
APR 14/68	1		REINFORCING PIERS 5 & 11	IE
APR 14/68	1		FOR TENDER	EM/H

ISSUE OR REVISION	
METROPOLITAN CORPORATION OF GREATER WINNIPEG STREETS AND TRANSIT DIVISION	
ST. JAMES BRIDGE AND INTERCHANGE	
LAYOUT AND REINFORCEMENT PIERS 5 AND 11	
TEMPLETON ENGINEERING COMPANY PROFESSIONAL ENGINEERS WINNIPEG, MANITOBA	A. D. MARGISON AND ASSOCIATES LIMITED CONSULTING PROFESSIONAL ENGINEERS TORONTO, CANADA
APPROVED <i>[Signature]</i> DIRECTOR, STREETS AND TRANSIT DIVISION	DRAWN BY <i>[Signature]</i> CHECKED <i>[Signature]</i> FILE No. 1968-A-320 SHEET No.
DATE 14 <sup>TH</sup> MARCH 1968	SCALE AS SHOWN DWG. No. B-5000-52