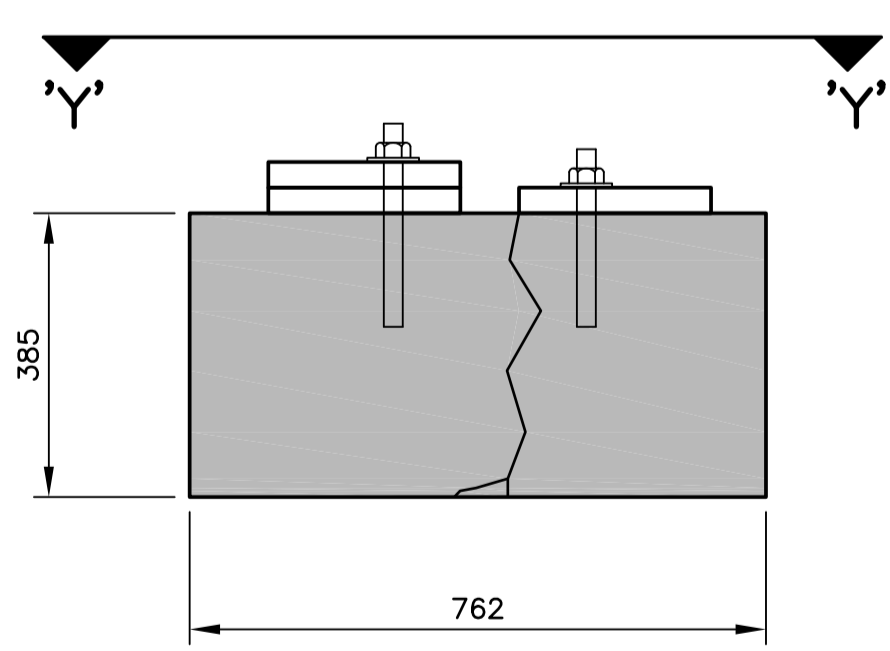
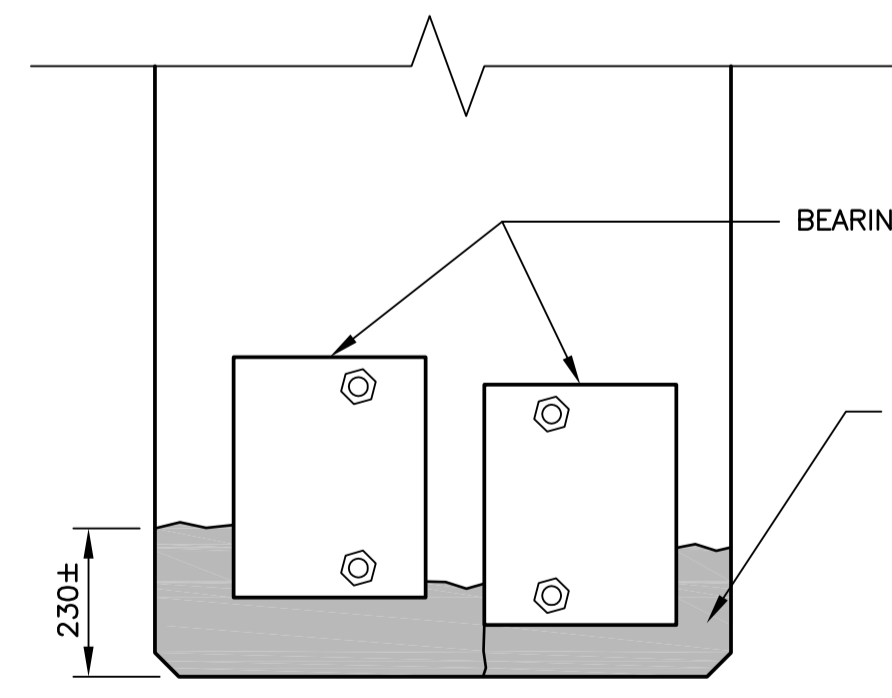


ELEVATION - PIER 6
(LOOKING SOUTH)

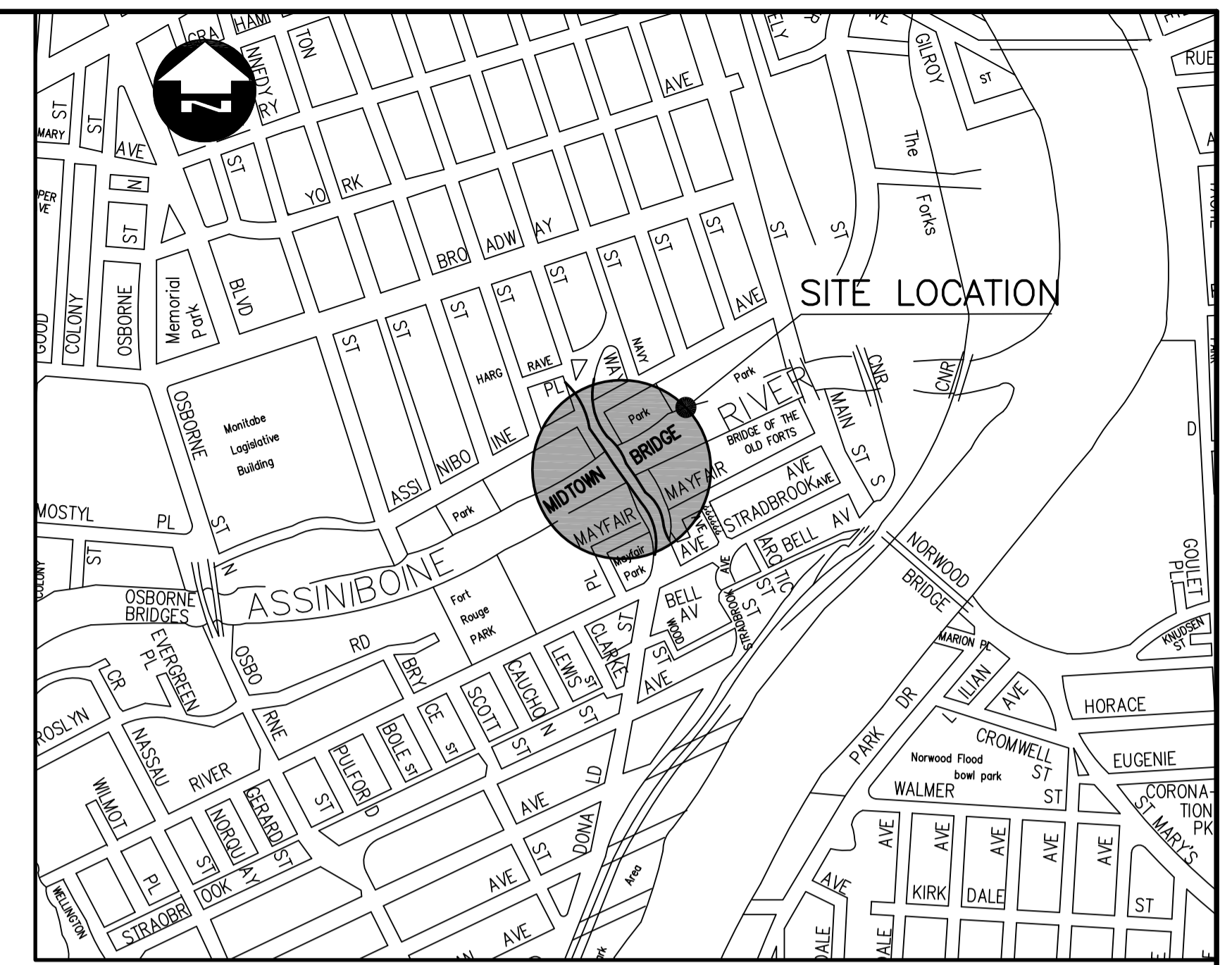
SECTION 1
N.T.S.



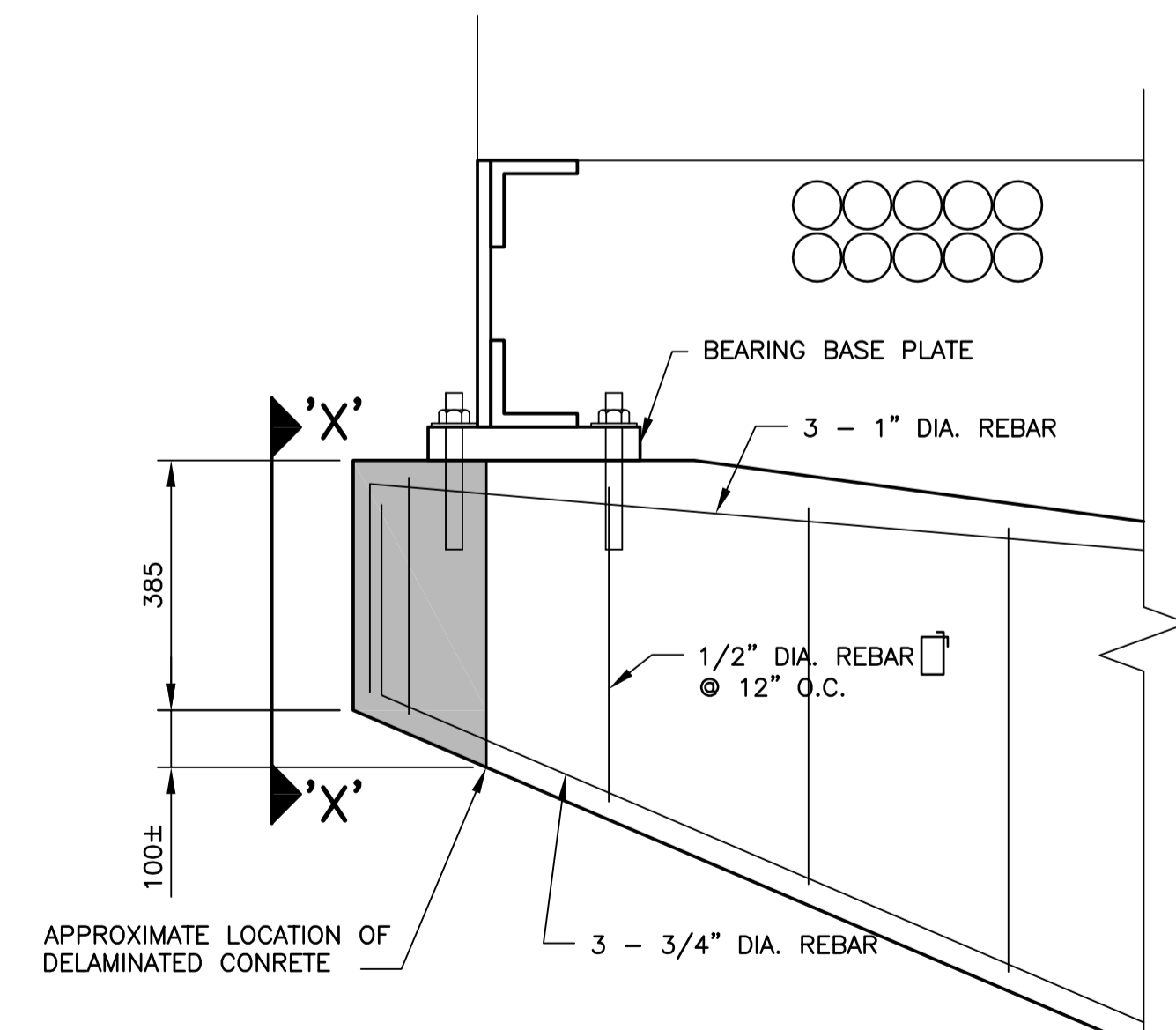
ELEVATION
VIEW 'X'-'X'
N.T.S.



PLAN
VIEW 'Y'-'Y'
N.T.S.



LOCATION PLAN



DETAIL
N.T.S.

NOTES:

1. REMOVE ALL CONCRETE FROM THE DESIGNATED REPAIR AREAS TO THE DEPTH SHOWN IN THE DRAWING. SAWCUT PERIMETER TO A MINIMUM DEPTH OF 25 MM. THE SPECIFIED DEPTH OF REMOVAL SHALL ACHIEVE A 25 MM CLEAR DISTANCE BETWEEN THE EXISTING REINFORCING STEEL AND THE PREPARED CONCRETE SURFACE TO ALLOW THE BARS TO BE FULLY CLEANED AND NEW CONCRETE COMPLETELY ENCAPSULATE THEM. IF THIS CANNOT BE ACHIEVED WITHIN THE DESIGNATED REPAIR DEPTH, THE CONTRACT ADMINISTRATOR MAY DIRECT ADDITIONAL CONCRETE REMOVAL AS EXTRA WORK.
2. AFTER COMPLETION OF CONCRETE REMOVALS, STEEL SURFACES SHALL BE THOROUGHLY CLEANED BY GRITBLASTING. ALL GRITBLAST MATERIALS SHALL BE BLOWN OUT OF THE REPAIR AREA AND REMOVED OFF SITE.
3. PLACE CONCRETE. ALLOW CONCRETE TO CURE IN FORMS IF FORMS ARE USED FOR MINIMUM OF 7 DAYS.
4. CONCRETE REPAIR MATERIAL MAY BE EITHER ONE OR A COMBINATION OF CONCRETE REPAIR MORTARS, CONVENTIONAL CONCRETE, OR SELF-COMPACTING CONCRETE. REFER TO SPECIFICATION FOR DETAILS.



B.M. ELEV.	DESIGNED BY: M.R.D.		
	DRAWN BY: M.R.D.		
	CHECKED BY: R.A.W.		
	REVIEWED BY: R.A.W.		
	SCALE: HORZ. AS SHOWN VERT.		
	DATE: JUNE 2006		
2 ISSUED FOR TENDER	06/06/15	NBG	
1 ISSUED FOR CITY REVIEW	06/06/13	MRD	
0 ISSUED FOR CITY REVIEW	06/05/19	MRD	
NO. REVISIONS	DATE	BY	

ENGINEER'S SEAL

THE CITY OF WINNIPEG
PUBLIC WORKS DEPARTMENT

2006 BRIDGE MAINTENANCE
MIDTOWN BRIDGE

CONCRETE REPAIRS

PIER 6

CITY DRAWING NUMBER
B114-06-01

SHEET 1 OF 1

BID OPP NO.
353-2006

CONSULTANT PROJECT NO.
06-5919-1002