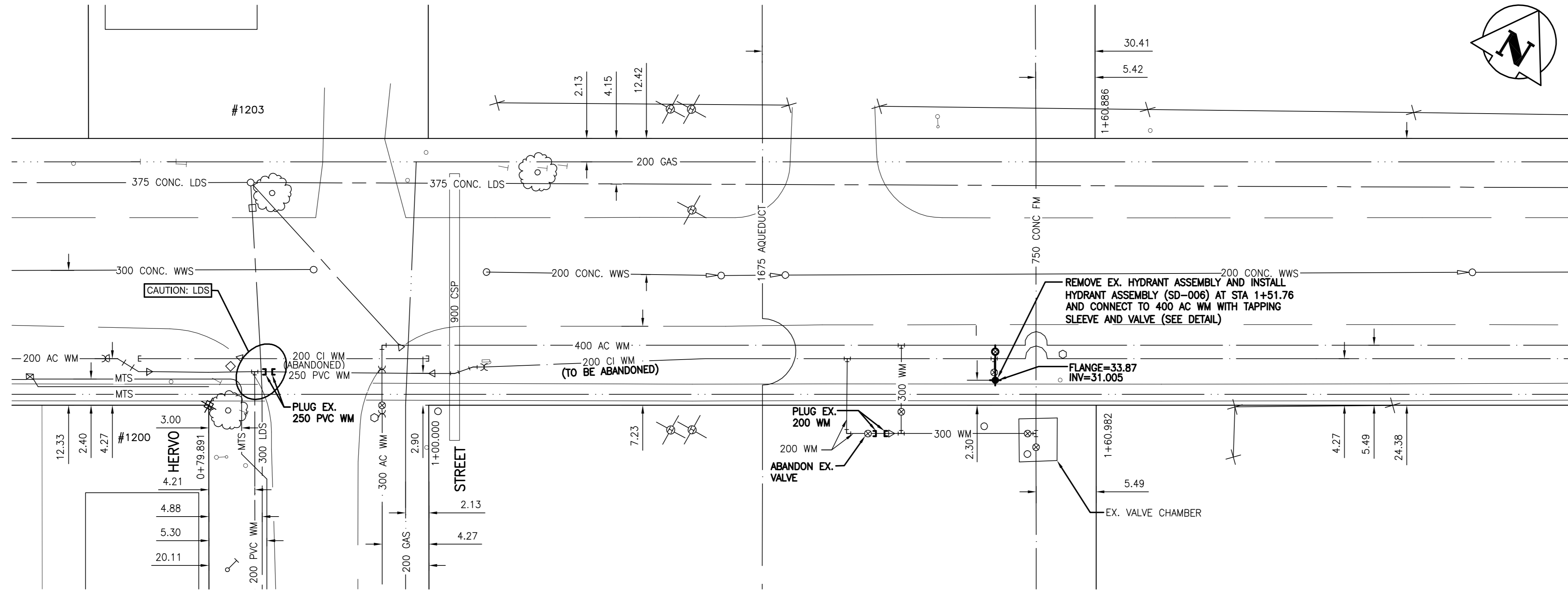


CHEVRIER BOULEVARD



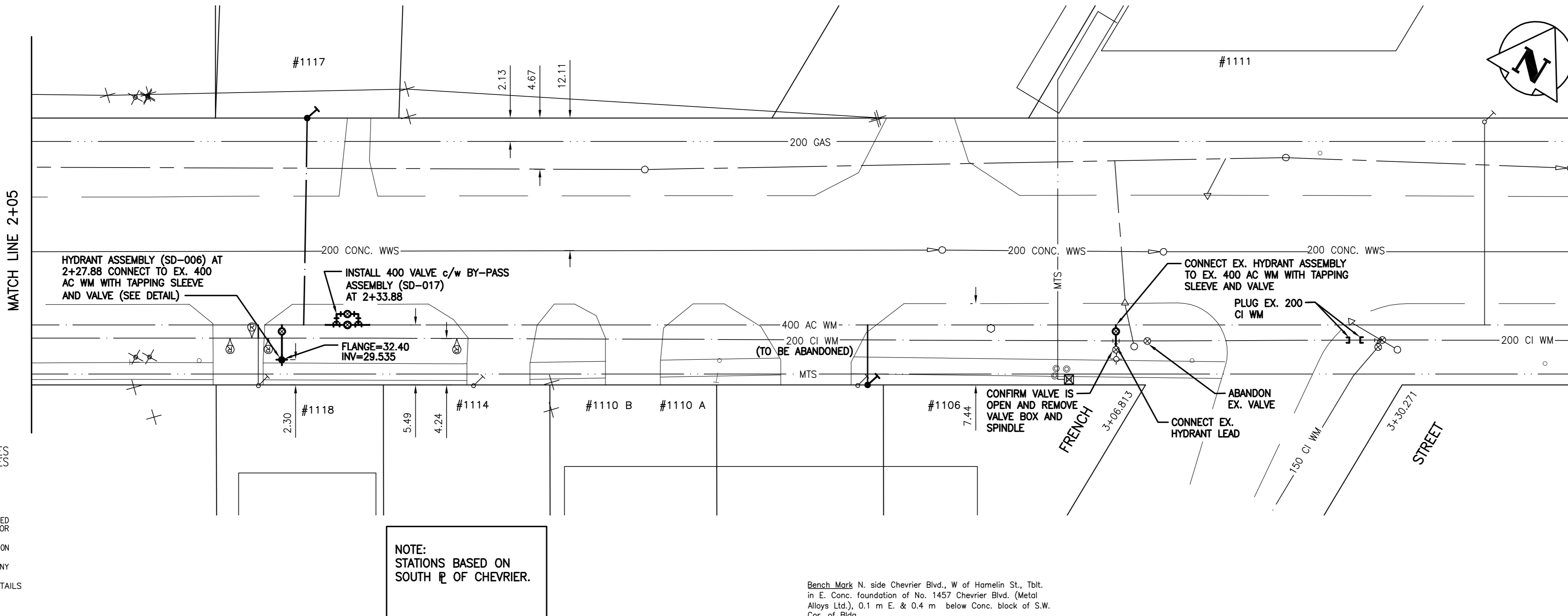
NOTE:  
 NOT A WATERMAIN RENEWAL.  
 ABANDON EX. 200 CI WM.  
 CONTRACTOR TO RECONNECT ALL SERVICES AND HYDRANTS TO THE 400 AC WM.

MATCH LINE 2+05

CONSTRUCTION NOTES:

1. EXPOSE EXISTING WATERMAIN AND CONFIRM INVERTS PRIOR TO CONSTRUCTION.
2. CONFIRM LOCATION OF ALL SERVICES.
3. INSTALL WATERMAIN BY TRENCHLESS METHODS.
4. TRENCHES AND EXCAVATIONS WITHIN 1 METER OF PAVED AREAS SHALL BE CLASS 3 BACKFILL.
5. ALL MATERIALS SHALL CONFORM TO CITY OF WINNIPEG STANDARD CONSTRUCTION SPECIFICATIONS.
6. MINIMUM COVER SHALL BE 2.4m.
7. REPLACE ALL EXISTING LEAD SERVICES FROM PROPOSED MAIN TO PL.
8. NOTIFY ALL AFFECTED RESIDENTS AND BUSINESSES 24 HOURS IN ADVANCE OF ANY WATER SHUTDOWNS OR DISRUPTIONS OF SERVICE. LAMP STANDARDS, UTILITY POLES AND ANCHORS IN CONFLICT WITH PROPOSED WATERMAIN INSTALLATION MAY REQUIRE TEMPORARY SUPPORT/REMOVAL OR REPLACEMENT AT THE CONTRACTOR'S EXPENSE.
- 9.

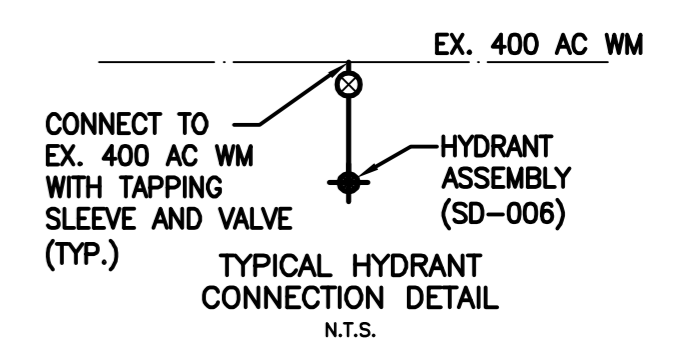
CHEVRIER BOULEVARD



WATER SERVICE INFORMATION

ADDRESS & SERVICE	SIZE (mm) & TYPE	STOP COOK SHORT & LONG MEASUREMENT	CORPORATION LOCATION	REMARKS
#1108 CHEVRIER BLVD. RESIDENTIAL	25 LEAD	9.75m W/EL BUILDING	1.52 E EL. HOUSE	S/C RUNS AT ANGLE
#1110 ASB CHEVRIER BLVD. COMMERCIAL & RESIDENTIAL	25 COPPER	7.10m L/R BL	1.52 E S/C	SAW SAME TRENCH
#1111 CHEVRIER BLVD. INDUSTRIAL	25 COPPER	45.0m W HPD @ FRENCH ST	1.82m E OF S/C	
#1111 CHEVRIER BLVD. INDUSTRIAL	150 PVC	27.74m W/BL		OPP VALVE
#1111 CHEVRIER BLVD. INDUSTRIAL	200 SPRINKLER	14.7m W HPD 151 W FRENCH		SAME AS S/C
#1114 CHEVRIER BLVD. COMMERCIAL	UNKNOWN	47.55 E HPD #1108		
#1114 CHEVRIER BLVD. COMMERCIAL	UNKNOWN	1.82m ENL BLDG	13.8m E WL. HOUSE	
#1117 CHEVRIER BLVD. RESIDENTIAL	20	13.1 N/BL		
#1118 CHEVRIER BLVD. RESIDENTIAL	13 COPPER	2.13m W EL. HOUSE	3.35m W EL. HOUSE	LOT 065 23 ST. V.
#1118 CHEVRIER BLVD. RESIDENTIAL	13 COPPER	5.49m FROM HL		
#1118 CHEVRIER BLVD. RESIDENTIAL	13 COPPER	2.13m L/R HL		
#1118 CHEVRIER BLVD. RESIDENTIAL	13 COPPER	74.07m W HPD WL FRENCH		OPP S/C

RENEW SERVICE



**APEGM**  
 Certificate of Authorization  
 Stantec Consulting Ltd.  
 No. 1301 Expiry: April 30, 2007

**METRIC**  
 WHOLE NUMBERS INDICATE MILLIMETRES  
 DECIMALIZED NUMBERS INDICATE METRES

**WARNING**  
 IF POWER EQUIPMENT OR EXPLOSIVES ARE TO BE USED FOR EXCAVATION ON THIS PROJECT THE CONTRACTOR MUST:  
 1) NOTIFY THE GAS COMPANY OF THE PROPOSED LOCATION OF EXCAVATION.  
 2) TAKE PRECAUTION TO AVOID DAMAGE TO GAS COMPANY INSTALLATIONS.  
 SEE PROVINCIAL REGULATION 140/92 FOR DETAILS

NOTE:  
 STATIONS BASED ON SOUTH R OF CHEVRIER.

Bench Mark N. side Chevrier Blvd., W of Homelin St., Tblt. in E. Conc. foundation of No. 1457 Chevrier Blvd. (Metal Alloys Ltd.), 0.1 m E. & 0.4 m below Conc. block of S.W. Cor. of Bldg.

150 WM	WATERMAIN	150 WM	HYDRO	150 WM	WATERMAIN	150 WM
+	HYDRANT	+	M.T.S.	+	HYDRANT, VALVE	+
o	VALVE	o	CONCRETE	o	LAND DRAINAGE SEWER	o
300 LDS	LAND DRAINAGE SEWER	300 LDS	ASPHALT	250 WWS	WASTE WATER SEWER	250 WWS
250 WWS	WASTE WATER SEWER	250 WWS	SIDEWALK	X	EX. GROUND PROFILE	X
o	MANHOLE	o	PROPERTY LINE	o	NORTH OR WEST GUTTER	o
□	CATCH BASIN	□	SURVEY BAR	□	SOUTH OR EAST GUTTER	□
▽	CURB INLET	▽	DITCH	◇	NORTH OR WEST R	◇
+	JUNCTIONS	+	ELEVATION	◇	SOUTH OR EAST R	◇
o	SIGN	o	CURB STOP	△	NORTH OR WEST DITCH	△
o	GAS	o	ANODE	▽	SOUTH OR EAST DITCH	▽
EXISTING	LEGEND-PLAN	PROPOSED	EXISTING	LEGEND-PLAN	PROPOSED	EXISTING
EXISTING	LEGEND-PROFILE	PROPOSED	EXISTING	LEGEND-PROFILE	PROPOSED	EXISTING

LOCATION APPROVED UNDERGROUND STRUCTURES

SUPV. U/G STRUCTURES COMMITTEE DATE

NOTE:  
 LOCATION OF UNDERGROUND STRUCTURES AS SHOWN ARE BASED ON THE BEST INFORMATION AVAILABLE BUT NO GUARANTEE IS GIVEN THAT ALL EXISTING UTILITIES ARE SHOWN OR THAT THE GIVEN LOCATIONS ARE EXACT. CONFIRMATION OF EXISTENCE AND EXACT LOCATION OF ALL SERVICES MUST BE OBTAINED FROM THE INDIVIDUAL UTILITIES BEFORE PROCEEDING WITH CONSTRUCTION.

NO.	REVISIONS	DATE	BY

**Stantec Consulting Ltd.**  
 905 Waverley Street, Winnipeg, Manitoba  
 Tel 204-489-5900 Fax 204-453-9012

DESIGNED BY: JKH  
 CHECKED BY: WWB  
 DRAWN BY: JKH  
 APPROVED BY: HAK

HOR. SCALE: 1:250  
 VERTICAL: N/A

RELEASED FOR CONSTRUCTION: DATE

ENGINEER'S SEAL

ORIGINAL SEALED BY: H.A. KATZ  
 P. ENG. 06/04/06

CONSULTANT DRAWING NO. C-203

**THE CITY OF WINNIPEG**  
 WATER AND WASTE DEPARTMENT  
 ENGINEERING DIVISION

2006 WATERMAIN RENEWALS  
 CHEVRIER BOULEVARD  
 HERVO STREET TO FRENCH STREET  
 STA 0+84 TO STA 3+08

SHEET 3 OF 11  
 CAD FILE DRAWING NUMBER 09010C-203675  
 CITY DRAWING NUMBER D-9026

V:\1117\Drawn\11172006\0\_Vwinipeg\chevrier.dwg  
 2006-06-05 12:49PM By: jkh