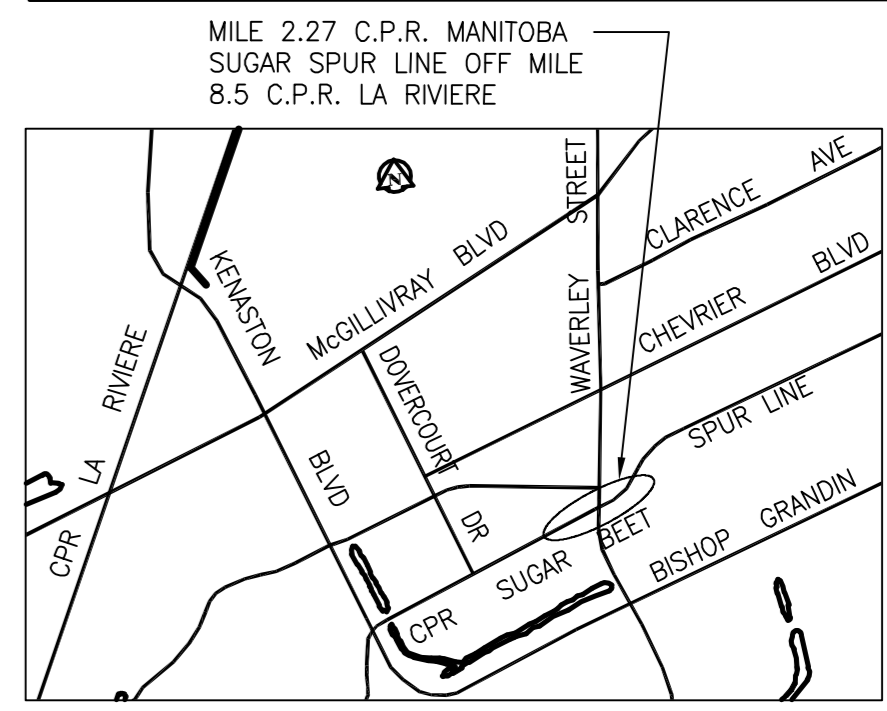
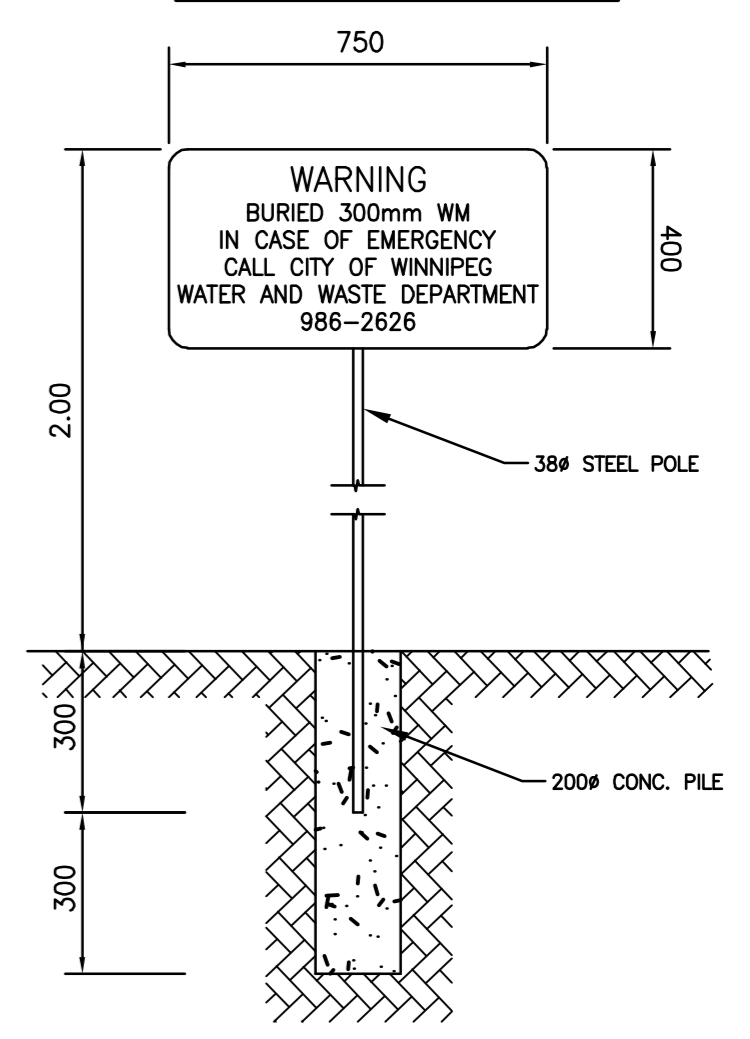


**OWNER CONTACT INFORMATION**  
 CITY OF WINNIPEG  
 WATER AND WASTE DEPARTMENT  
 KAS ZUREK, P. ENG.  
 DESIGN AND CONSTRUCTION ENGINEER  
 1500 PLESSIS ROAD  
 WINNIPEG, MB  
 R2C 5G6  
 TEL: (204) 986-2025  
 FAX: (204) 986-5345

**WATER CARRIER PIPE INFO FOR C.P.R. CROSSING**  
 DIAMETER - 300mm  
 MATERIAL - PVC  
 WALL THICKNESS 18.6mm  
 PIPE CLASS - AWWA C900 DR18  
 SURGE PRESSURE = 300 PSI (2.0MPa)  
 OPERATING PRESSURE = 60 PSI (0.4MPa)  
 TEST PRESSURE = 150 PSI (1.0 MPa)  
 INSTALLATION METHOD - CORED  
**ENCASEMENT PIPE INFO**  
 DIAMETER - 452.2mm  
 MATERIAL - BLACK STEEL ASTM A35  
 WALL THICKNESS - 6.35mm  
 YIELD STRENGTH - 241 MPa

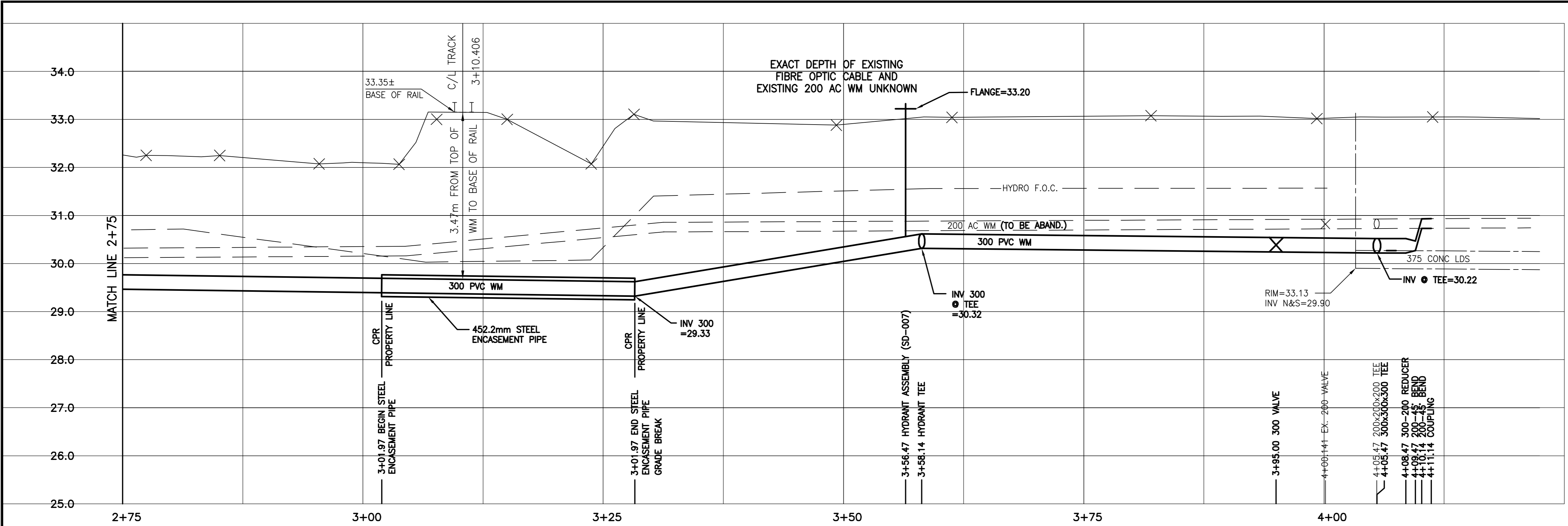


**NOTE:**  
 C/L OF PROPOSED 300 WM CROSSING TRACKS TO SOUTH OF SCURFIELD BLVD.=90.1m



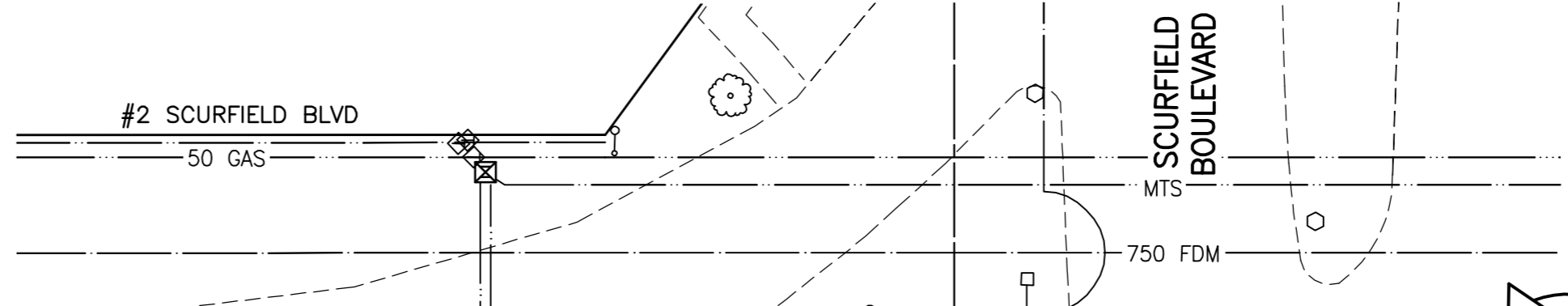
**WARNING SIGN DETAIL**  
 N.T.S.

- CONSTRUCTION NOTES:**
1. EXPOSE EXISTING WATERMAIN AND CONFIRM INVERTS PRIOR TO CONSTRUCTION.
  2. CONFIRM LOCATION OF ALL SERVICES.
  3. INSTALL WATERMAIN BY TRENCHLESS METHODS.
  4. TRENCHES AND EXCAVATIONS WITHIN 1 METER OF PAVED AREAS SHALL BE CLASS 3 BACKFILL.
  5. ALL MATERIALS SHALL CONFORM TO CITY OF WINNIPEG STANDARD CONSTRUCTION SPECIFICATIONS.
  6. MINIMUM COVER SHALL BE 2.4m.
  7. REPLACE ALL EXISTING LEAD SERVICES FROM PROPOSED MAIN TO PL.
  8. NOTIFY ALL AFFECTED RESIDENTS AND BUSINESSES 24 HOURS IN ADVANCE OF ANY WATER SHUTDOWNS OR DISRUPTIONS OF SERVICE.
  9. LAMP STANDARDS, UTILITY POLES AND ANCHORS IN CONFLICT WITH PROPOSED WATERMAIN INSTALLATION MAY REQUIRE TEMPORARY SUPPORT/REMOVAL OR REPLACEMENT AT THE CONTRACTOR'S EXPENSE.



**WATER SERVICE INFORMATION**

ADDRESS & SERVICE	SIZE (mm) & TYPE (STREET)	STOP COOK SHORT & LONG MEASUREMENT	CORPORATION LOCATION	REMARKS
2 SCURFIELD BOULEVARD RESIDENTIAL	38 COPPER	49.07m E H/D 2ND W/ WAVERLEY	N/A	200mm FIRE SERVICE 48.77m E H/D 2ND W/ OF WAVERLEY



FOR CONTINUATION SEE DRAWING D-9030

INSTALL WARNING SIGN 0.30m NORTH OF CPR PROPERTY LINE AND 1.0m WEST OF CL OF WM PIPE (SEE DETAIL)

INSTALLATION AND MAINTENANCE OF 300 WM IN C.P.R. R.O.W. TO BE IN ACCORDANCE WITH TC E-10.

INSTALL WARNING SIGN 0.30m SOUTH OF CPR PROPERTY LINE AND 1.0m WEST OF CL OF WM PIPE (SEE DETAIL)

INSTALL 26.3-452.2mm STEEL ENCASEMENT PIPE

REMOVE 300-200 REDUCER AND CONNECT TO EX. 300 AC WM INVERT UNKNOWN INSTALL 300 WM EAST

ABANDON EX. 200 VALVE

CAUTION: FIBRE OPTIC CABLE

**APEGN**  
 Certificate of Authorization  
 Stantec Consulting Ltd.  
 No. 1301 Expiry: April 30, 2007

**WARNING**

IF POWER EQUIPMENT OR EMPLOYEES ARE TO BE USED FOR EXCAVATION ON THIS PROJECT THE CONTRACTOR MUST:  
 1) NOTIFY THE GAS COMPANY OF THE PROPOSED LOCATION OF EXCAVATION.  
 2) TAKE PRECAUTION TO AVOID DAMAGE TO GAS COMPANY INSTALLATIONS.  
 SEE PROVINCIAL REGULATION 140/92 FOR DETAILS

**NOTE:**  
 STATIONS BASED ON EAST OF WAVERLEY.

Benck, Mark N. side Chevrier Blvd., W of Hornellin St., Tblt. in E. Conc. foundation of No. 1457 Chevrier Blvd. (Metal Alloys Ltd.), 0.1 m E. & 0.4 m below Conc. block of S.W. Cor. of Bldg.

150 WM	150 WM	150 WM	HYDRO	150 WM	150 WM	150 WM	150 WM
WATERMAIN	HYDRANT	VALVE	M.T.S.	CONCRETE	ASPHALT	SIDEWALK	PROPERTY LINE
LAND DRAINAGE SEWER	WASTE WATER SEWER	MANHOLE	CATCH BASIN	CURB INLET	JUNCTIONS	SIGN	GAS
WATERMAIN	HYDRANT, VALVE	LAND DRAINAGE SEWER	WASTE WATER SEWER	EX. GROUND PROFILE	NORTH OR WEST GUTTER	SOUTH OR EAST GUTTER	NORTH OR WEST P.
WASTE WATER SEWER	EX. GROUND PROFILE	NORTH OR WEST GUTTER	SOUTH OR EAST GUTTER	NORTH OR WEST P.	SOUTH OR EAST P.	NORTH OR WEST DITCH	SOUTH OR EAST DITCH
PROPERTY LINE	SURVEY BAR	DITCH	ELEVATION	CURB STOP	ANODE		
EXISTING	LEGEND-PLAN	PROPOSED	EXISTING	LEGEND-PLAN	PROPOSED	EXISTING	LEGEND-PROFILE

**LOCATION APPROVED UNDERGROUND STRUCTURES**

SUBV. U/G STRUCTURES COMMITTEE	DATE

**NOTE:**  
 LOCATION OF UNDERGROUND STRUCTURES AS SHOWN ARE BASED ON THE BEST INFORMATION AVAILABLE BUT NO GUARANTEE IS GIVEN THAT ALL EXISTING UTILITIES ARE SHOWN OR THAT THE GIVEN LOCATIONS ARE EXACT. CONFIRMATION OF EXISTENCE AND EXACT LOCATION OF ALL SERVICES MUST BE OBTAINED FROM THE INDIVIDUAL UTILITIES BEFORE PROCEEDING WITH CONSTRUCTION.

NO.	REVISIONS	DATE	BY

**Stantec Consulting Ltd.**  
 905 Waverley Street, Winnipeg, Manitoba  
 Tel 204-489-5900 Fax 204-453-9012

DESIGNED BY: JKH	CHECKED BY: WWB
DRAWN BY: JKH	APPROVED BY: HAK
HOR. SCALE: 1:250	RELEASED FOR CONSTRUCTION:
VERTICAL: 1:50	DATE: 06.06.01

ENGINEER'S SEAL  
 ORIGINAL SEALED BY  
 H. A. KATZ  
 P. ENG.  
 06/02/06

**THE CITY OF WINNIPEG**  
 WATER AND WASTE DEPARTMENT  
 ENGINEERING DIVISION

**2006 WATERMAIN RENEWALS**  
 WAVERLEY STREET  
 AUTOMALL ENTRANCE EAST TO SCURFIELD BOULEVARD  
 STA 2+75 TO STA 4+10

SHEET 8 OF 11  
 CAD FILE DRAWING NUMBER 09010C-208675.dwg  
 CITY DRAWING NUMBER D-9031

V:\1110\Drawings\11100610\Waverley.dwg  
 2006-06-05 12:56PM By: jkh