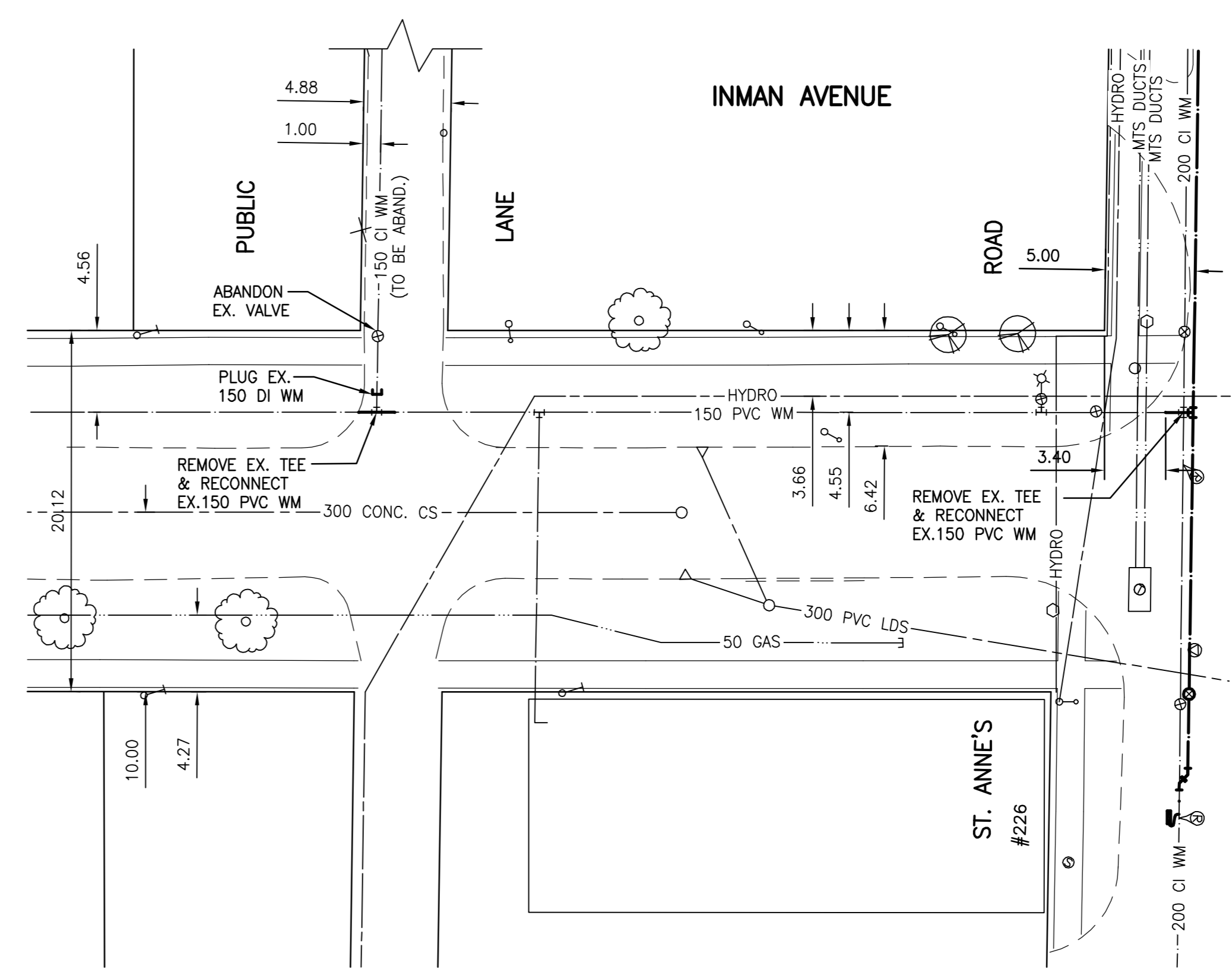
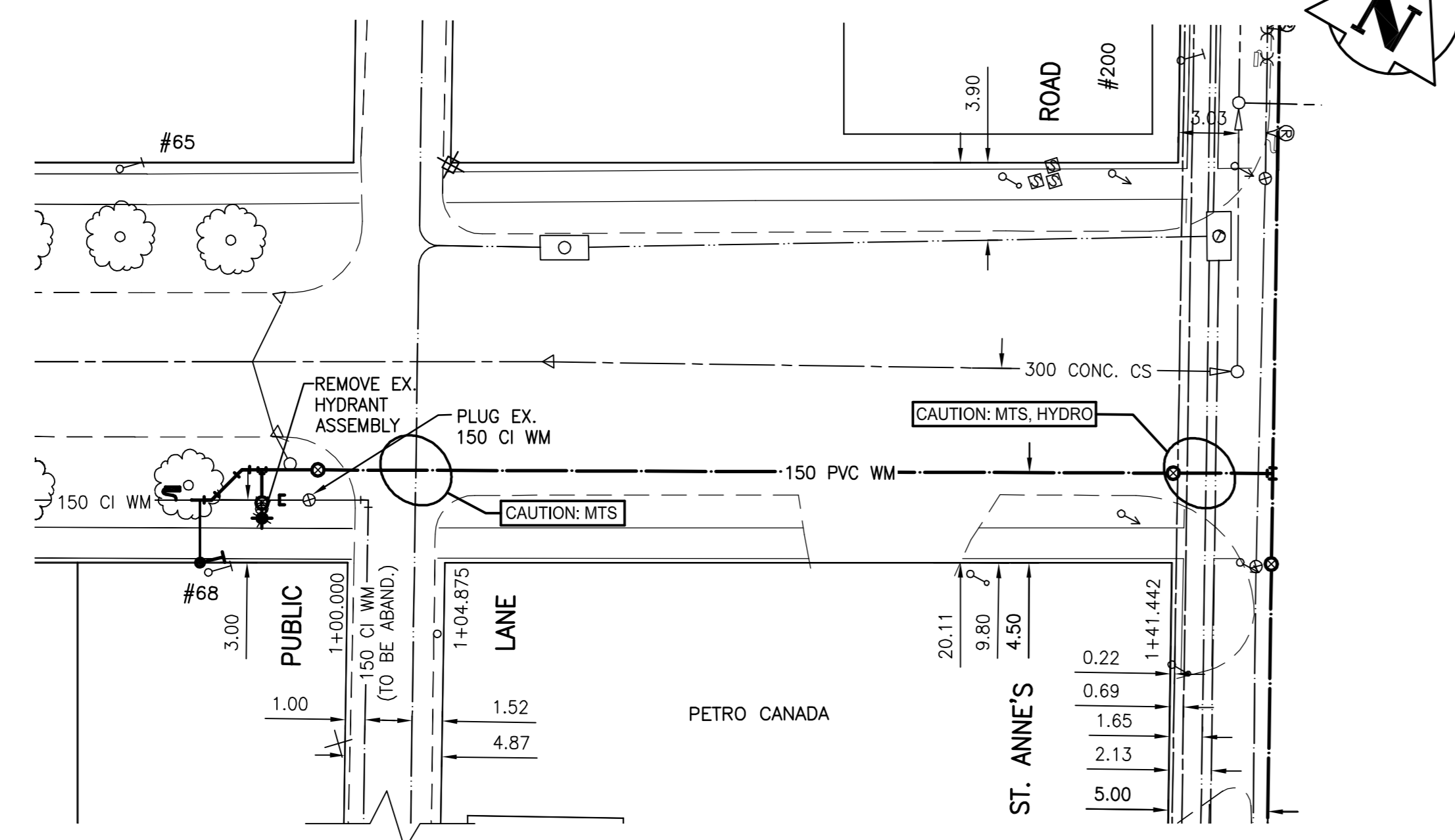


WATER SERVICE INFORMATION

ADDRESS & SERVICE	SIZE (mm) & TYPE (STREET)	STOP CODE SHORT & LONG MEASUREMENT	CORPORATION LOCATION	REMARKS
68 KINGSWOOD AVENUE RESIDENTIAL	12 COPPER	3.96m EWHL	N/A	

KINGSWOOD AVENUE



NOTE:
OIL AND GAS RESISTANT GASKETS TO BE USED ON ST. ANNE'S AND KINGSWOOD RENEWAL

CONSTRUCTION NOTES:

- EXPOSE EXISTING WATERMAIN AND CONFIRM INVERTS PRIOR TO CONSTRUCTION.
- CONFIRM LOCATION OF ALL SERVICES.
- INSTALL WATERMAIN BY TRENCHLESS METHODS.
- TRENCHES AND EXCAVATIONS WITHIN 1 METER OF PAVED AREAS SHALL BE CLASS 3 BACKFILL.
- ALL MATERIALS SHALL CONFORM TO CITY OF WINNIPEG STANDARD CONSTRUCTION SPECIFICATIONS.
- MINIMUM COVER SHALL BE 2.4m.
- REPLACE ALL EXISTING LEAD SERVICES FROM PROPOSED MAIN TO PL.
- NOTIFY ALL AFFECTED RESIDENTS AND BUSINESSES 24 HOURS IN ADVANCE OF ANY WATER SHUTDOWNS OR DISRUPTIONS OF SERVICE.
- ALL LARGE DIAMETER WATER SERVICES CONNECTIONS SHALL BE SUPPLIED WITH MIN. 38 mm TEMPORARY SERVICE CONNECTIONS.
- LAMP STANDARDS, UTILITY POLES AND ANCHORS IN CONFLICT WITH PROPOSED WATERMAIN INSTALLATION MAY REQUIRE TEMPORARY SUPPORT/REMOVAL OR REPLACEMENT AT THE CONTRACTOR'S EXPENSE.



WARNING

IF POWER EQUIPMENT OR EXPLOSIVES ARE TO BE USED FOR EXCAVATION ON THIS PROJECT THE CONTRACTOR MUST:
 1) NOTIFY THE GAS COMPANY OF THE PROPOSED LOCATION OF EXCAVATION.
 2) TAKE PRECAUTION TO AVOID DAMAGE TO GAS COMPANY INSTALLATIONS.
 SEE PROVINCIAL REGULATION 140/92 FOR DETAILS

NOTE:
STATIONS ALONG SOUTH E OF KINGSWOOD AVE.

Bench Mark N.E. Cor. St. Anne's Rd. & Bank Ave., Tblt. in W. Conc. foundation of St. Vital Baptist Church, 1.0 m N. & 0.1 m below brick of S.W. Cor. of Bldg.

150_WM	WATERMAIN	150_WM	HYDRO	150_WM	WATERMAIN	150_WM	WATERMAIN
+	HYDRANT	+	M.T.S.	+	HYDRANT, VALVE	+	HYDRANT, VALVE
+	VALVE	+	CONCRETE	+	LAND DRAINAGE SEWER	+	LAND DRAINAGE SEWER
+	LAND DRAINAGE SEWER	+	ASPHALT	+	WASTE WATER SEWER	+	WASTE WATER SEWER
+	WASTE WATER SEWER	+	SIDEWALK	+	EX. GROUND PROFILE	+	EX. GROUND PROFILE
+	MANHOLE	+	PROPERTY LINE	+	NORTH OR WEST GUTTER	+	NORTH OR WEST GUTTER
+	CATCH BASIN	+	SURVEY BAR	+	SOUTH OR EAST GUTTER	+	SOUTH OR EAST GUTTER
+	CURB INLET	+	DITCH	+	NORTH OR WEST P	+	NORTH OR WEST P
+	JUNCTIONS	+	ELEVATION	+	SOUTH OR EAST P	+	SOUTH OR EAST P
+	SIGN	+	CURB STOP	+	NORTH OR WEST DITCH	+	NORTH OR WEST DITCH
+	GAS	+	ANODE	+	SOUTH OR EAST DITCH	+	SOUTH OR EAST DITCH
+	EXISTING	+	LEGEND-PLAN	+	LEGEND-PROFILE	+	LEGEND-PROFILE

LOCATION APPROVED UNDERGROUND STRUCTURES

SUPV. U/G STRUCTURES COMMITTEE DATE

NOTE:
LOCATION OF UNDERGROUND STRUCTURES AS SHOWN ARE BASED ON THE BEST INFORMATION AVAILABLE BUT NO GUARANTEE IS GIVEN THAT ALL EXISTING UTILITIES ARE SHOWN OR THAT THE GIVEN LOCATIONS ARE EXACT. CONFIRMATION OF EXISTENCE AND EXACT LOCATION OF ALL SERVICES MUST BE OBTAINED FROM THE INDIVIDUAL UTILITIES BEFORE PROCEEDING WITH CONSTRUCTION.

NO.	REVISIONS	DATE	BY

Stantec Consulting Ltd.
 905 Waverley Street, Winnipeg, Manitoba
 Tel 204-489-5900 Fax 204-453-9012

DESIGNED BY: JKH
 CHECKED BY: WWB
 DRAWN BY: JKH
 APPROVED BY: HAK

HOR. SCALE: 1:250
 VERTICAL: 1:50

RELEASED FOR CONSTRUCTION: DATE

ENGINEER'S SEAL

ORIGINAL SEALED BY
 H.A. KATZ
 P. ENG.
 06/02/06

CONSULTANT DRAWING NO.
C-211

THE CITY OF WINNIPEG
 WATER AND WASTE DEPARTMENT
 ENGINEERING DIVISION

2006 WATERMAIN RENEWALS
 KINGSWOOD AVENUE
 INMAN AVE AND KINGSWOOD AVE
 PUBLIC LANE AND KINGSWOOD AVE

SHEET OF
 II II

CAD FILE DRAWING NUMBER
 09010C-211675

CITY DRAWING NUMBER
D-9034

V:\1110\dwg\11100010\winipeg\01_ames.dwg
 2006-06-05 01:05PM By: jkh