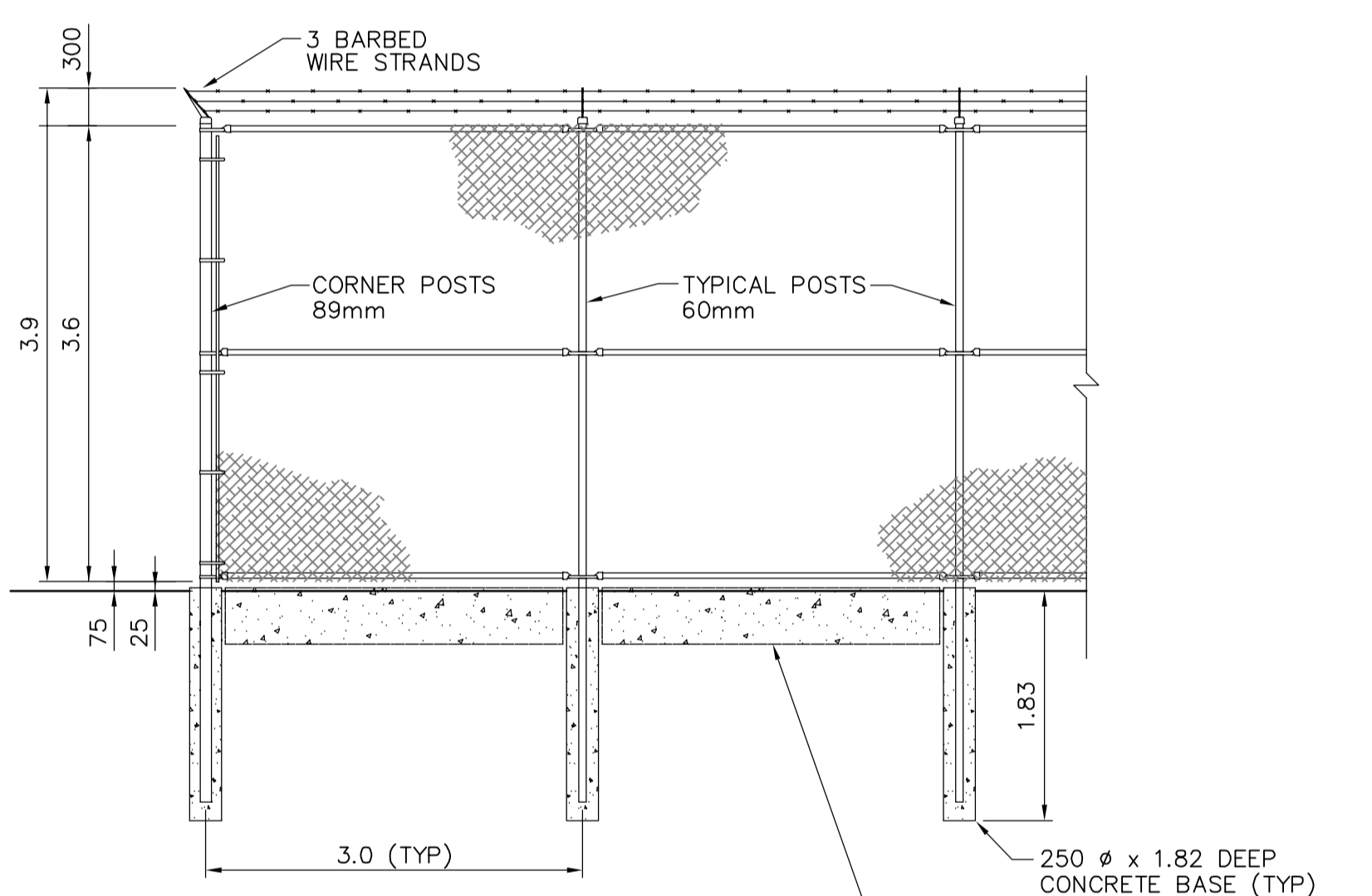


DIMENSION	A	B
TYPICAL SECTION	3.048	0.150
SWITCH SECTION	6.700	3.660
SHOULDER SECTION	4.270	1.220

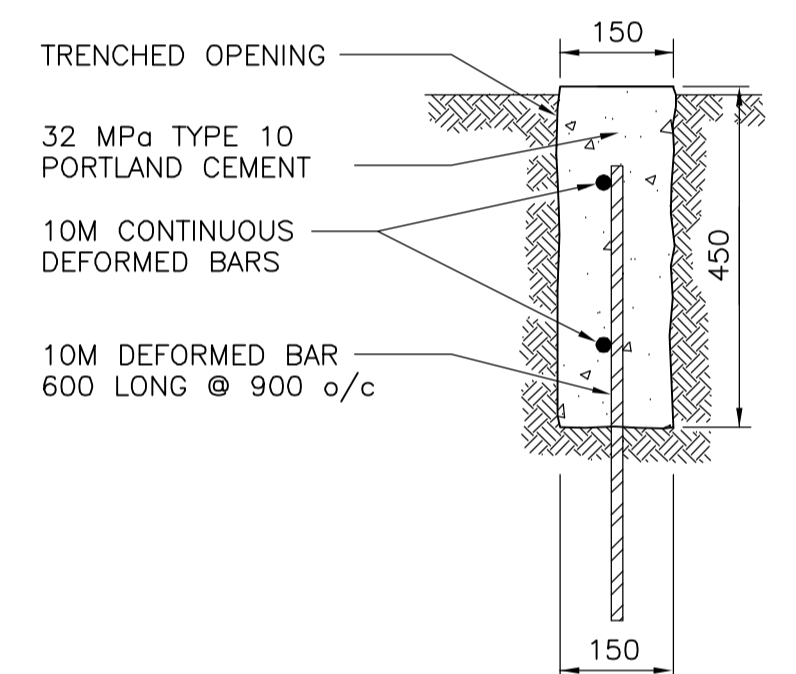
- NOTES:**
- RAIL EMBANKMENT MUST BE RESTORED UP TO & INCLUDING SUB-BALLAST FOLLOWING 1372Ø PCC PIPE INSTALLATION
 - BALLAST TO BE SUPPLIED BY CONTRACTOR & INSTALLED BY CITY FORCES.
 - TRACK TO BE REMOVED & RE-INSTALLED BY CITY FORCES.

EXISTING RAIL EMBANKMENT
SCALE 1:50



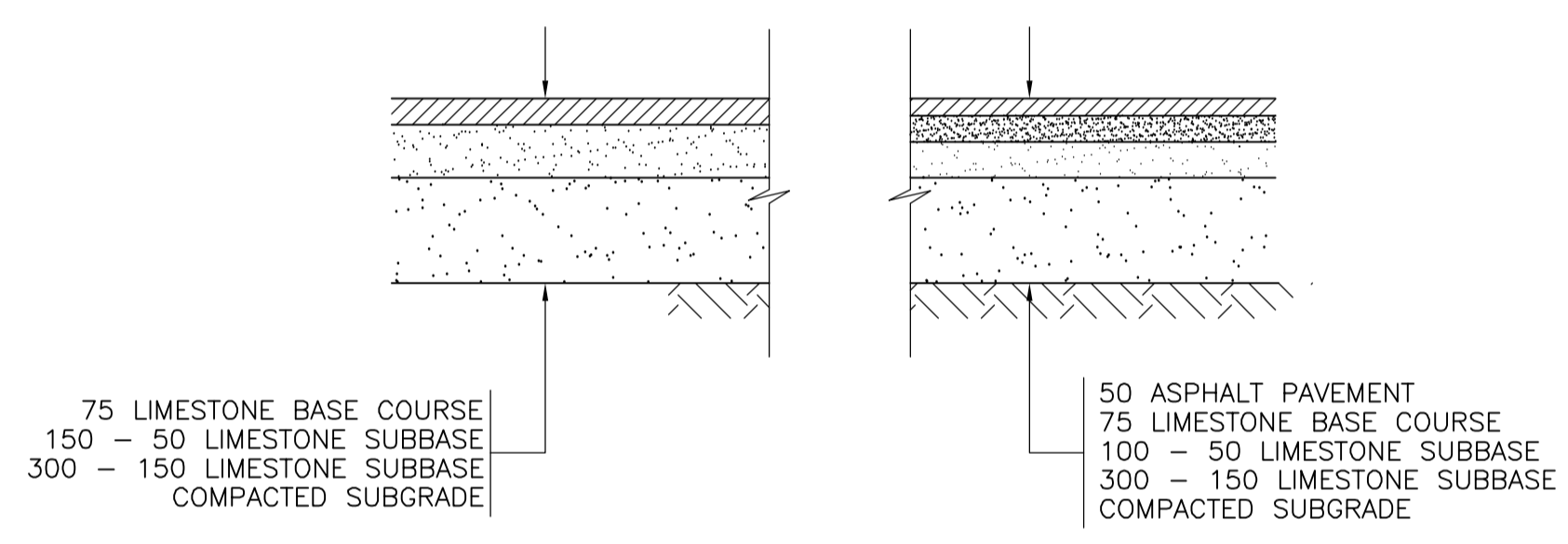
TYPICAL EXISTING CHAINLINK FENCE DETAIL
SCALE 1:50

NOTE:
CHAINLINK FENCE & CONCRETE CURB MUST BE RESTORED FOLLOWING 1372Ø PCC PIPE INSTALLATION



CAST-IN-PLACE CONCRETE CURB UNDER EXISTING CHAINLINK FENCING
SCALE 1:10

NOTE:
CONCRETE CURB MUST BE RESTORED FOLLOWING 1372Ø PCC PIPE INSTALLATION



GRAVEL ROADWAY

ASPHALT PAVEMENT

TYPICAL SECTIONS THRU EXISTING ROADWAY & PARKING AREAS
N.T.S.

NOTE:
SURFACES MUST BE RESTORED FOLLOWING PIPE INSTALLATION



B.M. ELEV.		UMA AECOM		ENGINEER'S SEAL			
		<small>© 2005 UMA ENGINEERING LTD. ALL RIGHTS RESERVED.</small>		ORIGINAL SIGNED BY E. D. J. TOUPIN 2006/08/25			
DESIGNED BY	EDT	CHECKED BY	CCM	WINNIPEG WATER TREATMENT PROGRAM CONSTRUCTION OF SURGE TOWER OVERFLOW PIPING		CITY FILE NUMBER	
DRAWN BY	WJd	APPROVED BY	CCM			SHEET 1 OF 1	
HOR. SCALE: -		RELEASED FOR CONSTRUCTION BY:		CIVIL SURGE TOWER OVERFLOW PIPING MISCELLANEOUS SECTIONS AND DETAILS		CITY DRAWING NUMBER	
VERTICAL SCALE: -		R. Amann				1-0601Y-C-C007-002-00D	
0	ISSUED FOR TENDER	06/08/25	WJd	DATE	2006/05/31	DATE	August 28, 2006
NO.	REVISIONS	DATE	BY	DATE	2006/05/31	DATE	August 28, 2006
				CONSULTANT DRAWING NO. WY C018			