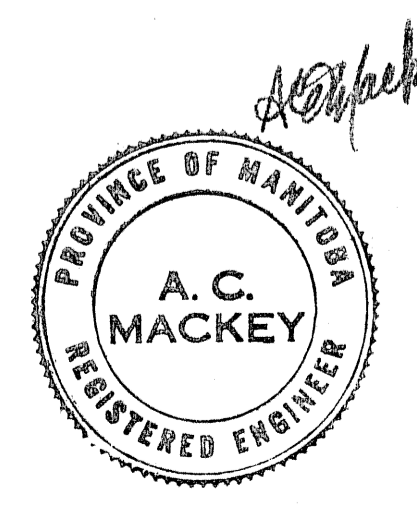
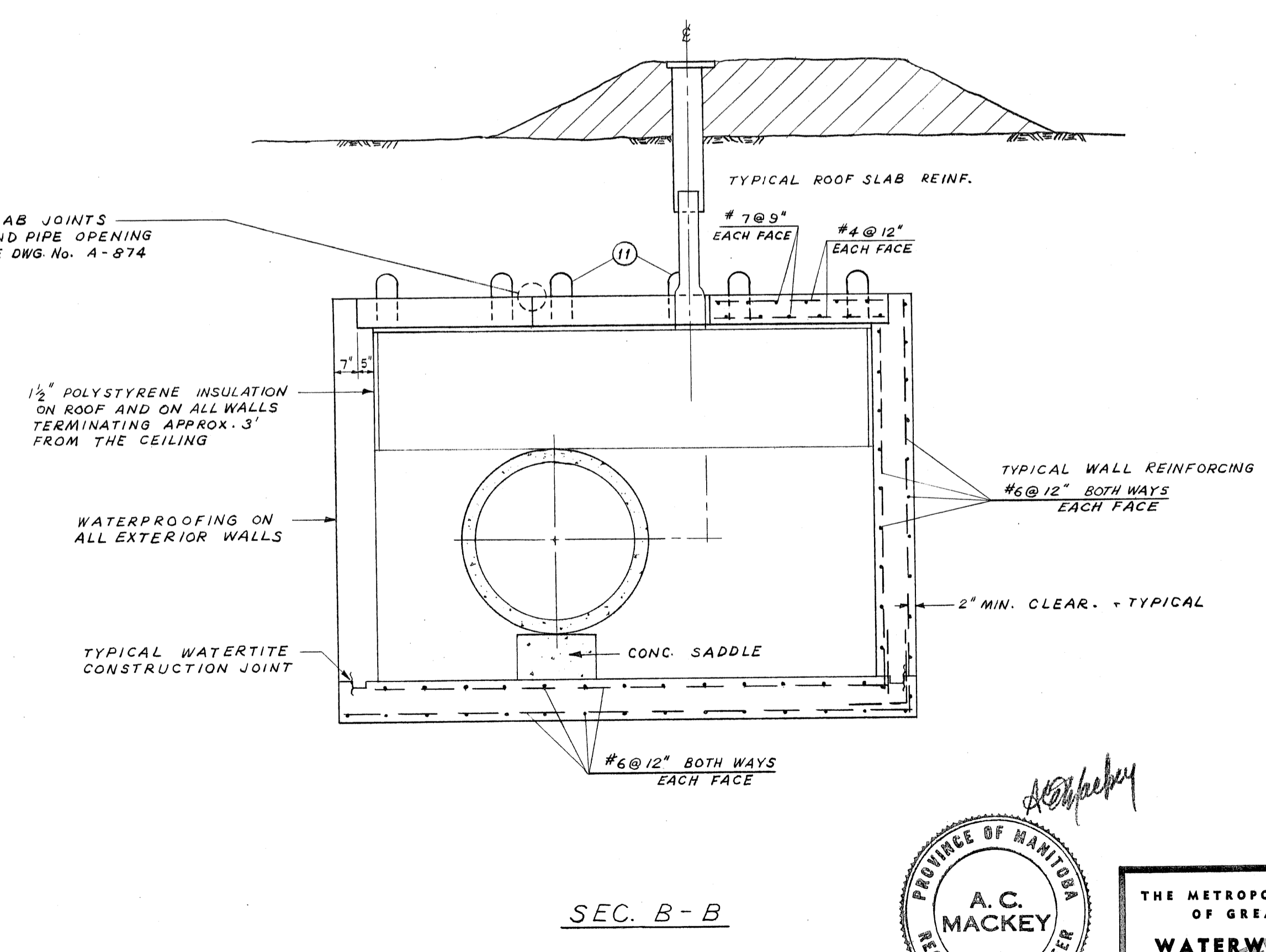
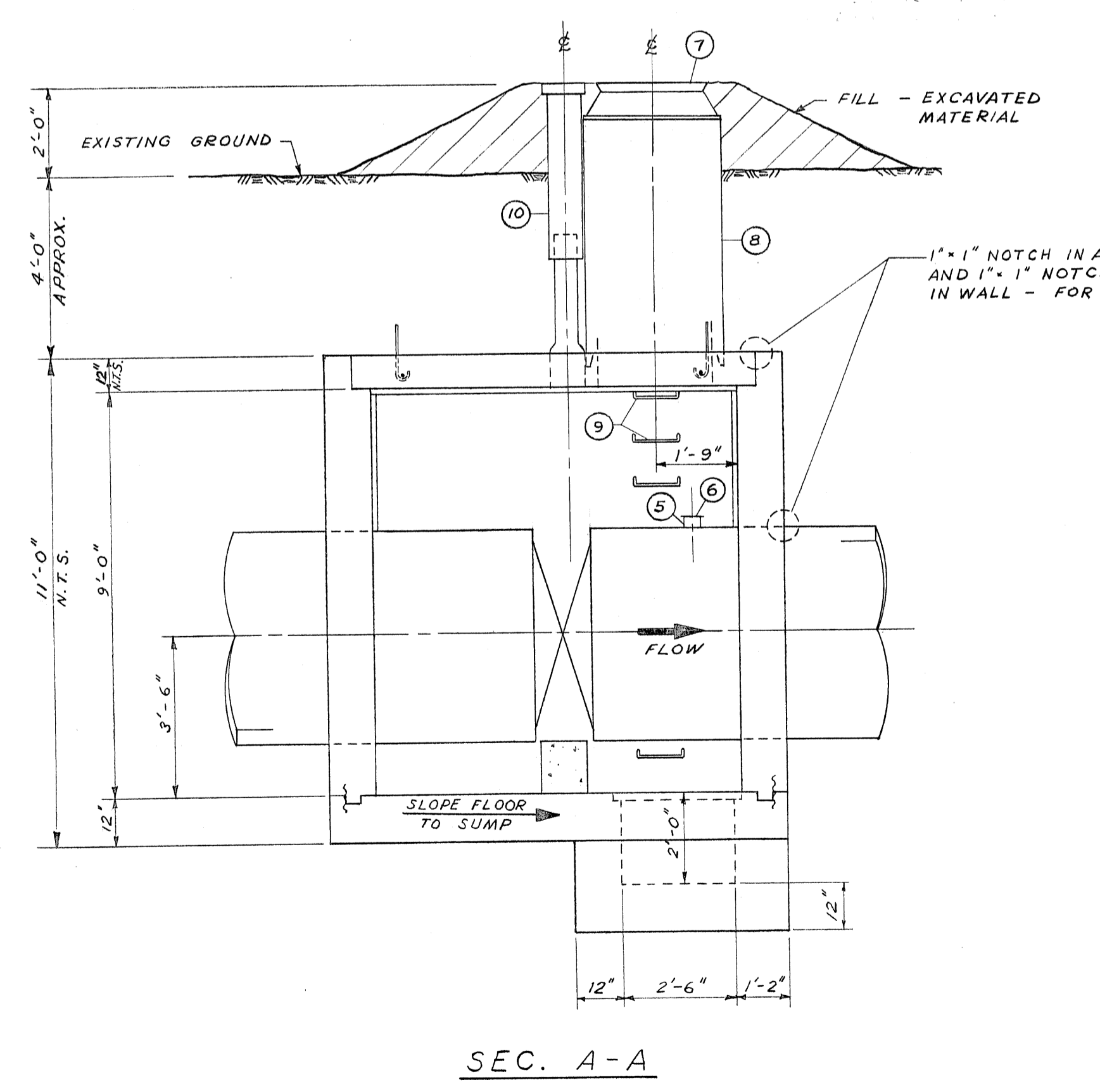


LIST OF MATERIALS				
No.	DESCRIPTION	SIZE	QUANTITY	SEE DETAIL ON DWS. No.
1	48" ϕ CONG. PIPE - SPIGOT TO FLANGE		1	
2	48" ϕ BUTTERFLY VALVE & OPERATOR		1	
3	48" ϕ STYLE #44 VICTAULIC COUPLING		1	
4	48" ϕ CONG. PIPE - FLANGE TO BELL		1	
5	4" ϕ SCREWED BRONZE NIPPLE	0'-6" L.	1	
6	4" ϕ SCREWED GALV. IRON CAP		1	
7	STD. METRO WATERWORKS M.H. FRAME AND SOLID COVER		1	A-796
8	30" ϕ PRECAST M.H. SECTIONS WITH "RAM-NEK" GASKETS			
9	STD. METRO WATERWORKS M.H. STEPS	$\frac{3}{4}$ " @ 12" C.C.		A-817
10	LARGE ADJUSTABLE VALVE BOX WITH STD. METRO WATERWORKS COVER		1	A-798
11	$\frac{3}{8}$ " GALV. LIFTING LUG - 4 PER SLAB		12	A-878

SUPPLIED BY METRO CORPORATION



THE METROPOLITAN CORPORATION OF GREATER WINNIPEG
WATERWORKS & WASTE DISPOSAL DIVISION
 A. PENMAN - DIRECTOR

MICROFILMED mar77

WATERWORKS DEPT.
DEACON RESERVOIR
 STAGE I
OUTLET CONTROL VALVE CHAMBER

SURVEYED & PLAN CHECKED BY: *W.A.C.*
 APPROVED AS BUILT BY: *W.A.C.*
 V.D. Dec. 1977

SCALE: 3/8" = 1'-0"
 DRAWING NO. **D-1232**