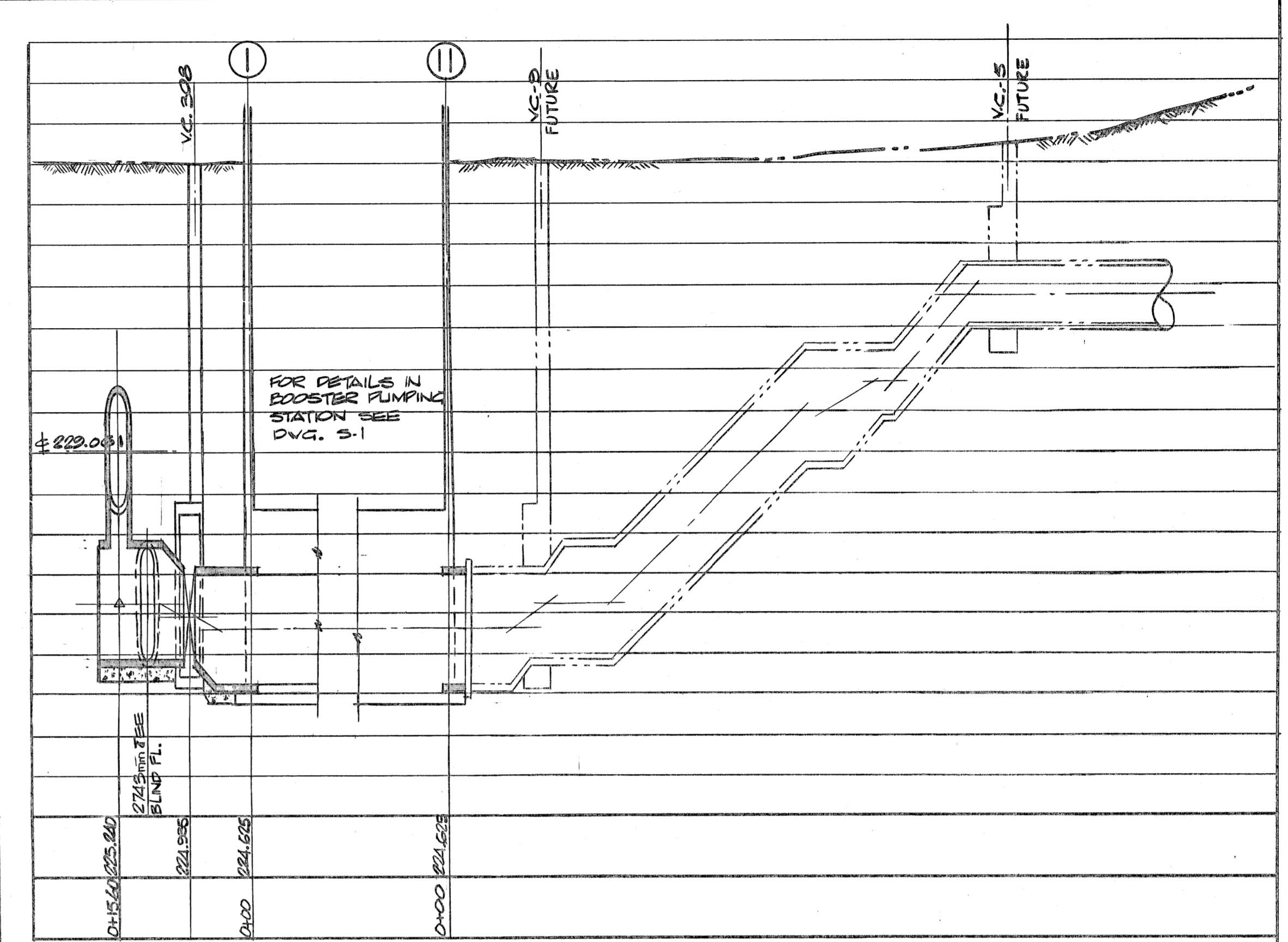
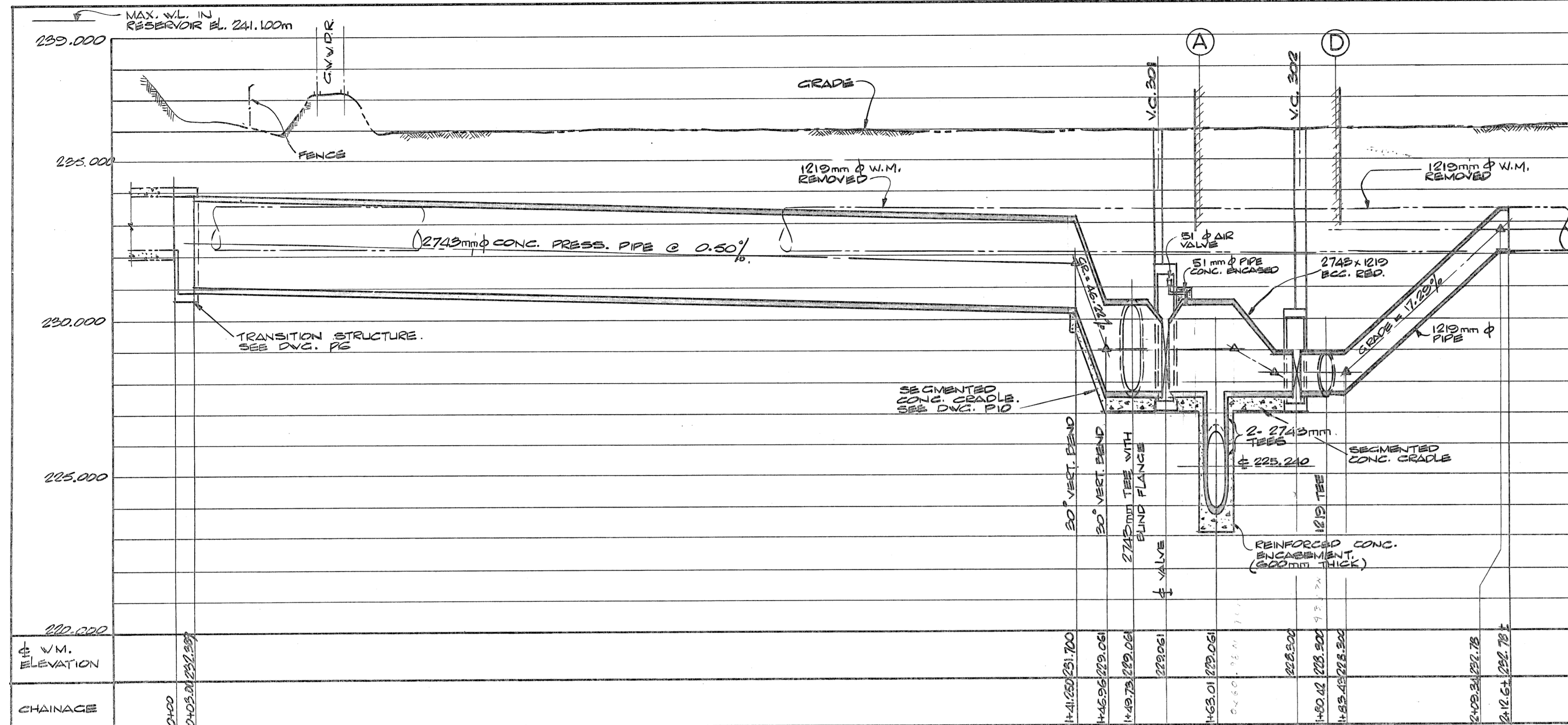


68 - Piping Profiles

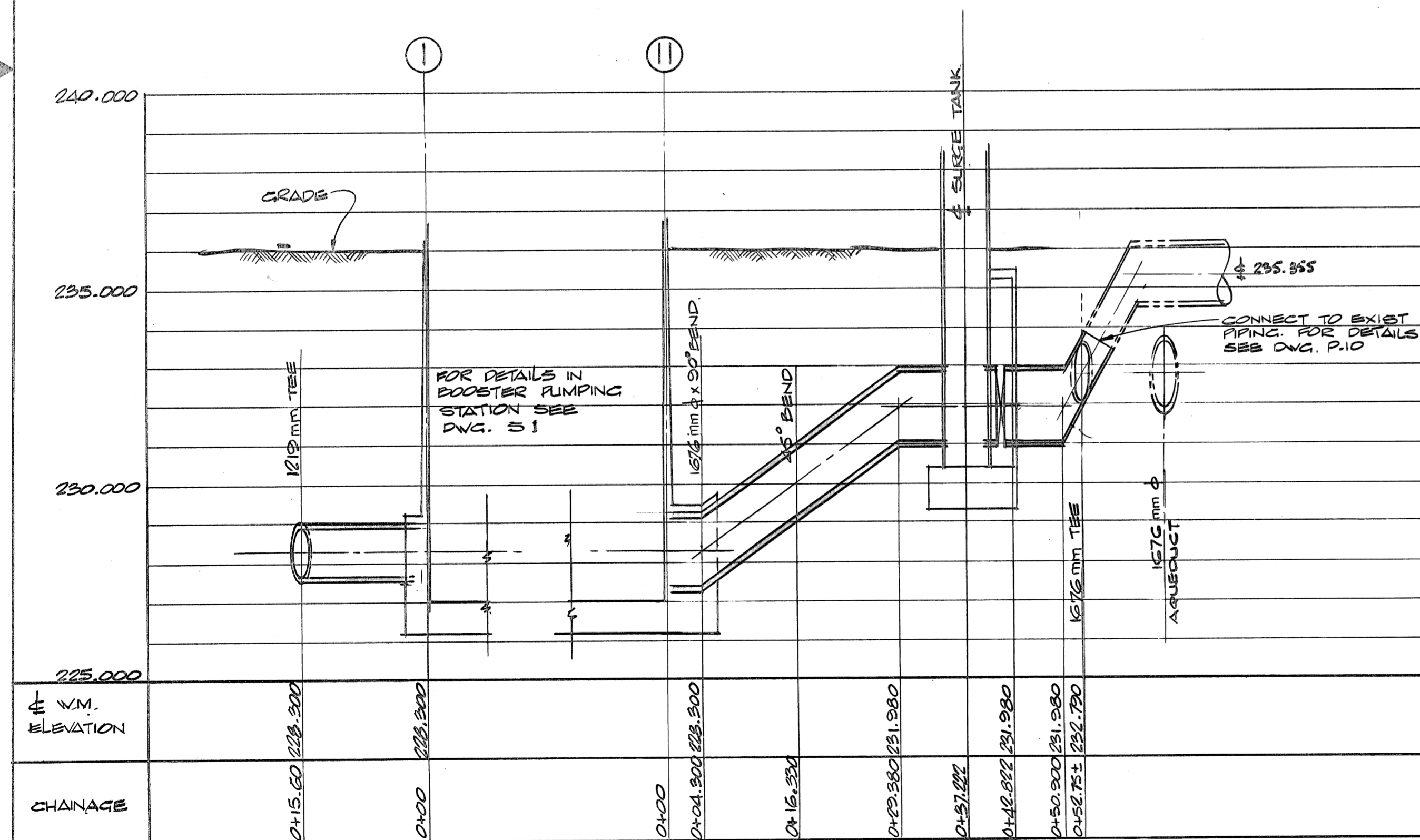
FILE NO. WWP 10537

DETAILS



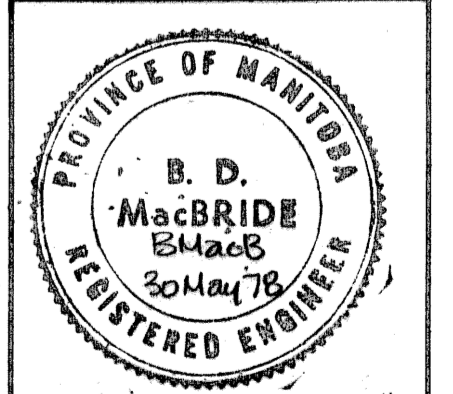
2743mm  $\phi$  SUCTION FROM RESERVOIR

2743mm  $\phi$  SUCTION FROM AQUEDUCT



DISCHARGE MAINS FROM PUMPHOUSE

AS BUILT



REFERENCE ONLY

DIMENSIONS IN MILLIMETRES EXCEPT AS NOTED

CONSULTANT	CENTRAL FILE	ENGINEERING OFFICE	SHEET NO.	DATE FILMED
DIVISION OF UTILITY	DRAWING FILE NUMBER		NO. OF SHEETS	
ENGINEERING OFFICE			SIZE	
			REVISION	
			SECURITY	
			FRANK NO.	
			NO. OF FRAMES	
			REFERENCE NO.	
GRID CO-ORDINATES	WORKS & OPERATIONS DEPARTMENT			
MICROFILMING				

REV.	DESCRIPTION	BY	DATE
1	REVISED TO AS BUILT	VSJ	SEP 80

DRAWN BY: SJS		DESIGNED BY: BMacB	
CHECKED BY: R.F.J.F.		APPROVED BY: [Signature]	

JAMES F. MACLAREN LIMITED  
CONSULTING ENGINEERS, PLANNERS AND SCIENTISTS  
WINNIPEG - LONDON - WINDSOR - WATERLOO - TORONTO

THE CITY OF WINNIPEG  
WATERWORKS, WASTE AND DISPOSAL DIVISION  
DEACON BOOSTER PUMPING STATION  
PROJECT  
PIPING PROFILES

HOR. 1:500  
SCALE: VERT. 1:100  
DATE: MAY 30, 1978  
CONSULTANT DRAWING No.  
P5 of 10  
CITY DRAWING No.  
D.B.P.-68