

DRAWING NOTES: ##

- DISCONNECT AND REMOVE ALL EXISTING ELECTRICAL DEVICES ALONG EXISTING SOUTH WALL THAT ARE NO LONGER REQUIRED. RELOCATE/RE-ROUTE/ETC. EXISTING ELECTRICAL REQUIRED FOR BUILDING.
- DISCONNECT AND REMOVE EXISTING PARKING LOT RECEPTACLES IN NEW DRIVEWAY. REPLACE ANY HOME RUNS AFFECTED BY PARKING LOT STALL REMOVALS BACK TO PARKING LOT PANEL.



REV	DESCRIPTION	DATE	BY
2	REVISED FOR TENDER	Jul 26, 2006	LK
1	ISSUED FOR TENDER	May 10, 2006	CM
0	ISSUED FOR 99% REVIEW	May 03, 2006	CM

SEAL: **APEGN**
 Certificate of Authorization
 SMS Engineering Ltd.
 No. 166 Expiry: April 30, 2007

SEAL: ORIGINAL CONTRACT DRAWING SIGNED AND SEALED BY B.D. LESKO, P. ENG MAY 10, 2006

THIS DRAWING MUST NOT BE SCALED.
 THE CONTRACTOR SHALL VERIFY ALL DIMENSIONS, DATUMS AND LEVELS PRIOR TO COMMENCEMENT OF WORK AND IS HELD RESPONSIBLE FOR REPORTING ANY DISCREPANCY OR OMISSION TO CONTRACT ADMINISTRATOR IMMEDIATELY.
 THIS DRAWING IS THE EXCLUSIVE PROPERTY OF NEIL COOPER ARCHITECT INC. AND CAN BE REPRODUCED ONLY WITH THE PERMISSION OF NEIL COOPER ARCHITECT INC. IN WHICH CASE THE REPRODUCTION MUST BEAR THEIR NAME AS THE ARCHITECTURAL FIRM.

ELECTRICAL DEMOLITION & SITE PLAN, SYMBOL LEGEND & DISTRIBUTION SCHEMATIC

PROJECT: **ADDITION TO 770 ROSS AVENUE**
 Winnipeg, Manitoba

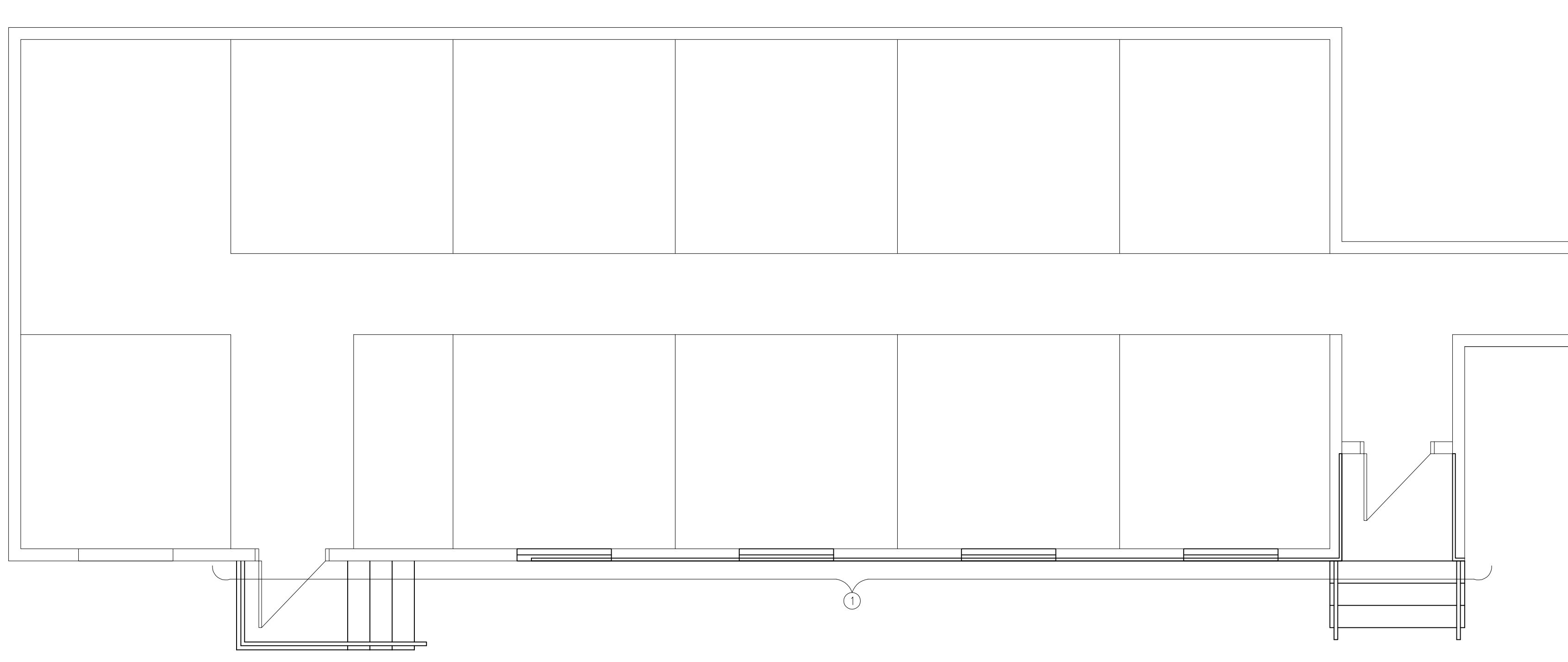
Neil Cooper Architect Inc.
 10-395 Berry Street, Winnipeg, Manitoba R3J 1N6

SMS ENGINEERING
 SMS Engineering Consulting Engineers
 770 Bradford Street Winnipeg MB Canada R3H 0S3
 Telephone 204.775.0291 Fax 204.772.2153
 06-520-01 sma@smseng.com

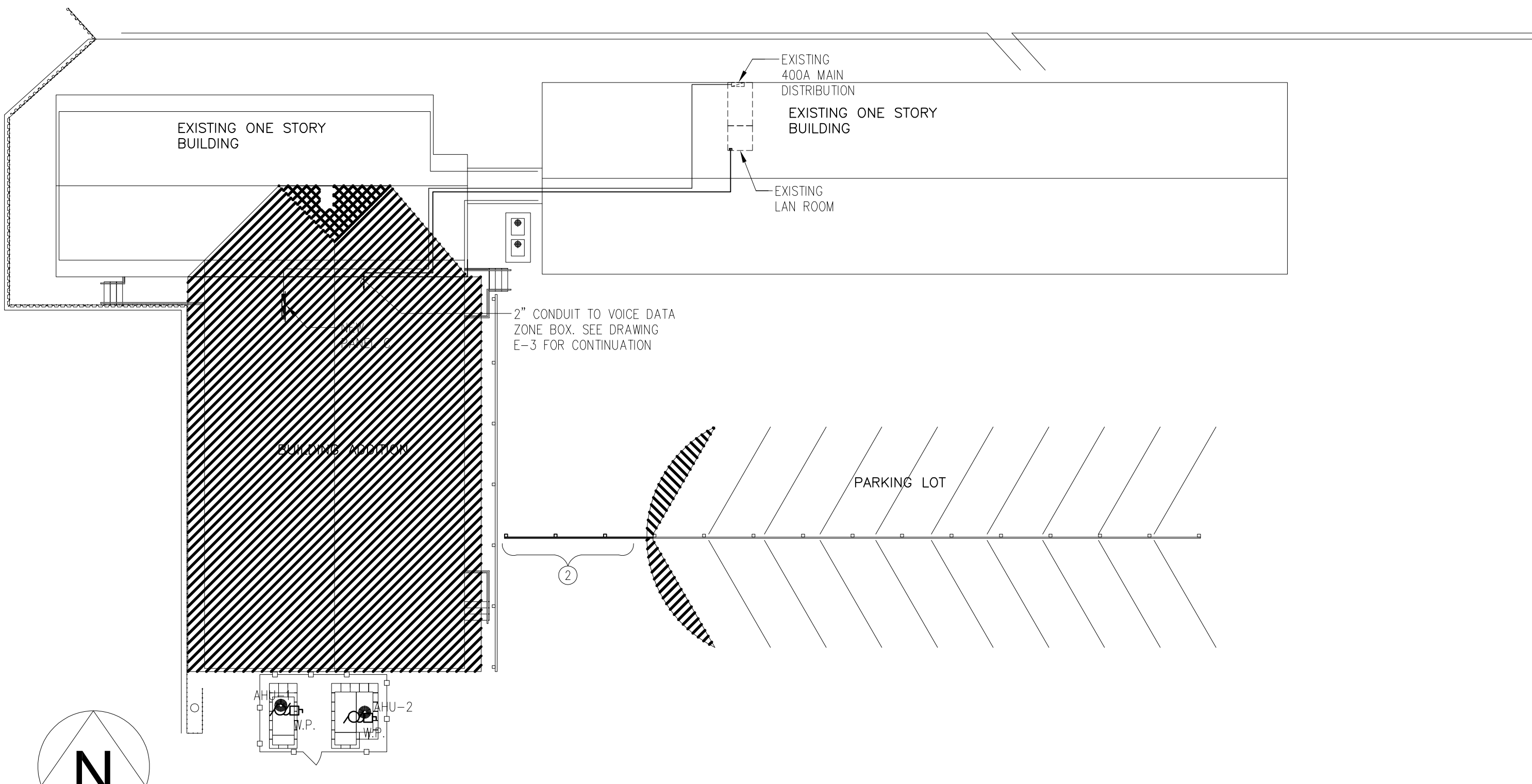
DRAWN BY: CM	CHECKED BY: BDL	SHEET NO: E1.0R2	REV NO:
DATE: APRIL 18, 2006	SCALE: AS NOTED	FILE: G:\PROJECTS\2006_SP\06520NCA.COW\cadd\M\6520M1.dwg	

SYMBOL LEGEND	
SYSTEMS AND COMMUNICATION	
▽	DATA OUTLET
▽	VOICE DATA OUTLET C/W 3/4" CONDUIT TO NEAREST VOICE DATA ZONE BOX
VD	VOICE DATA ZONE BOX
POWER	
⊕	DUPLEX RECEPTACLE
⊕	QUADRAPLEX RECEPTACLE
⊕	SPLIT WIRED DUPLEX RECEPTACLE
⊗	JUNCTION BOX
⊙	MOTOR AND DISCONNECT
⊙	MOTOR
⊙	DISCONNECT
⊙	MANUAL STARTER OR TOGGLE SWITCH
▭	RECESSED MOUNTED PANEL
⊙	THERMOSTAT
⊙	HUMIDISTAT
⊙	UNIT HEATER
▭	BASEBOARD HEATER
EMERGENCY LIGHTING	
⊕	BATTERY PACK
⊕	DOUBLE REMOTE HEAD
LIGHTING	
⊕	FLUORESCENT FIXTURE, A1-PANEL AND CIRCUIT, α-CONTROL
▨	LIGHT FIXTURE CONNECTED TO EMERGENCY POWER OR NIGHT LIGHT CIRCUIT (TYPICAL FOR ALL LIGHT FIXTURES)
○	DOWN LIGHT
○	SINGLE LIGHT WALL MOUNTED
⊕	EXIT LIGHT
⊕	EXIT LIGHT SINGLE ARROW
⊕	EXIT LIGHT DOUBLE ARROW
SWITCHING	
⊕	ATTRIBUTABLE SWITCH
⊕	GANG SWITCH
ABBREVIATIONS (ADJACENT TO SYMBOL DENOTES)	
α	MOUNTED ABOVE COUNTER
L.T.	LIT TOGGLE
W.P.	WEATHER PROOF
c	CEILING MOUNTED

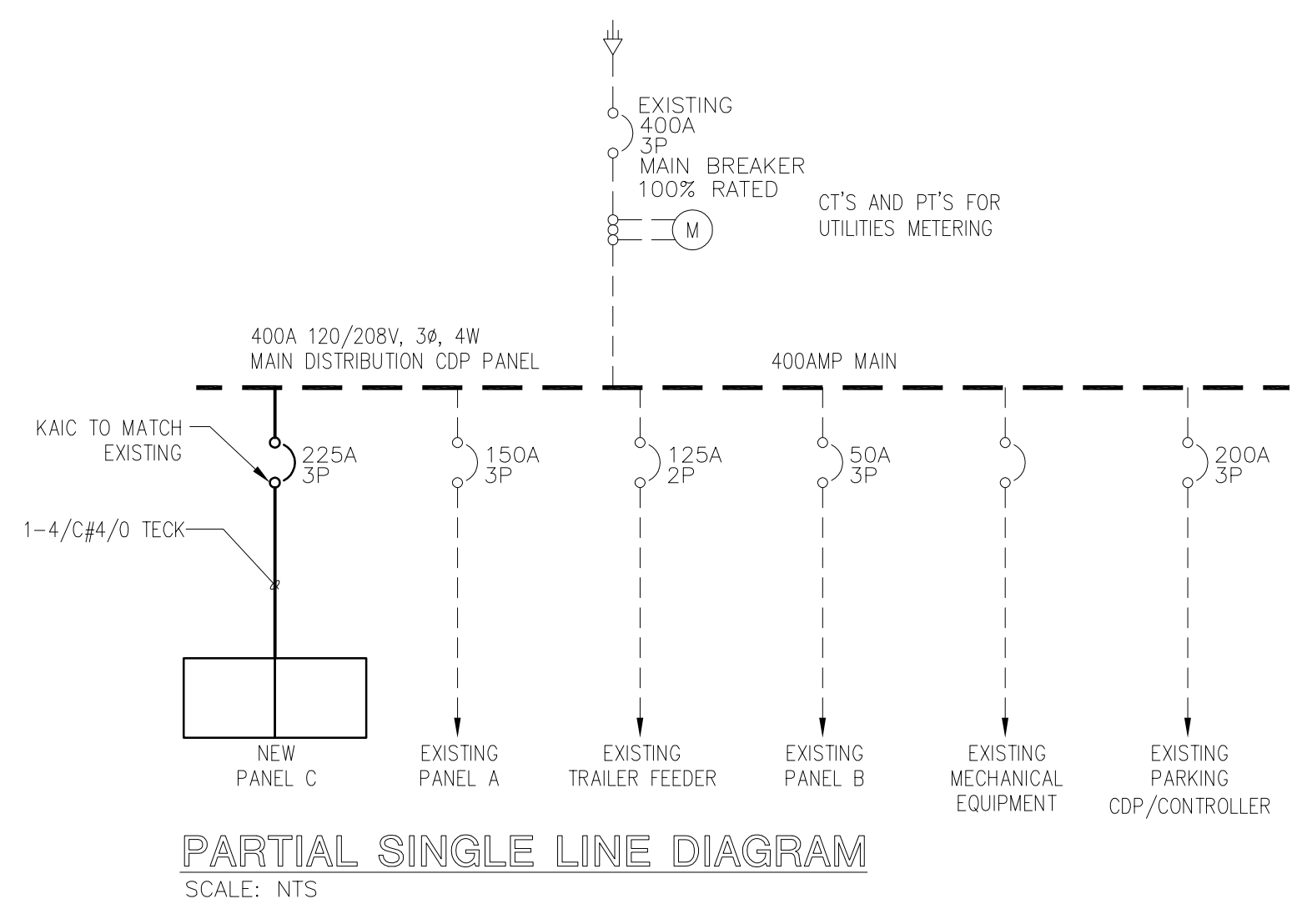
* PLEASE NOTE *
 ALL EQUIPMENT IN DASHED LINES IS EXISTING TO REMAIN UNLESS OTHERWISE NOTED



1 DEMOLITION PLAN - ELECTRICAL
 SCALE: 1/4" = 1'-0"



2 SITE PLAN - ELECTRICAL
 SCALE: 1/16" = 1'-0"



PARTIAL SINGLE LINE DIAGRAM
 SCALE: NTS