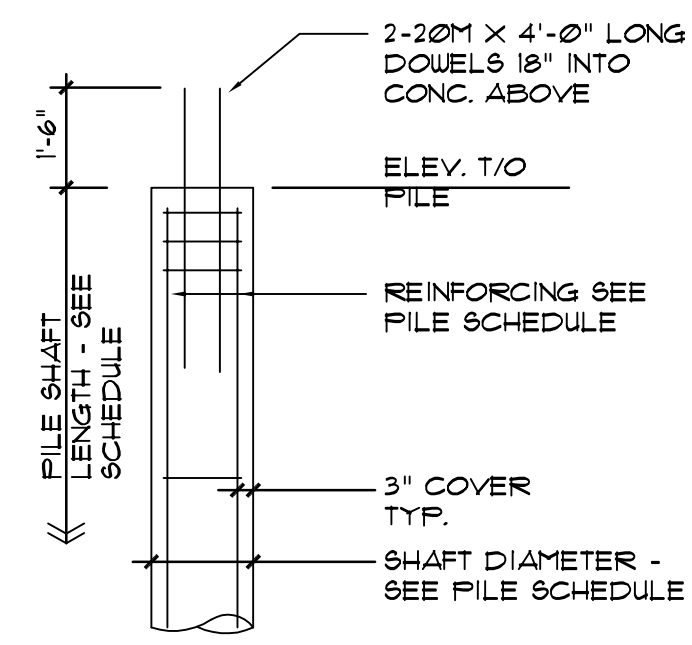


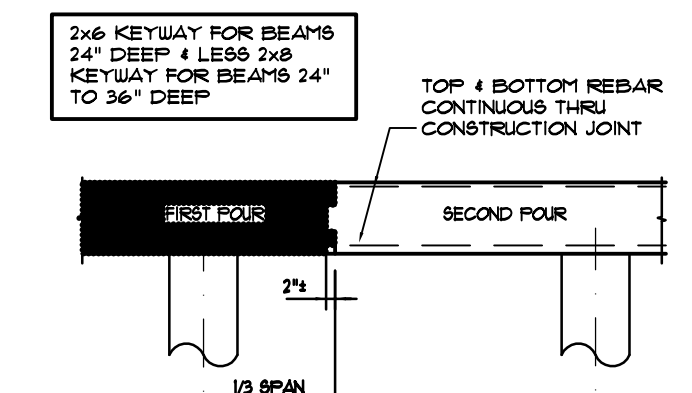
CONCRETE PILE SCHEDULE			
MARK	SHAFT DIAMETER	SHAFT LENGTH	REINFORCING STEEL
P-1	20" DIA.	25'-0"	4-15M VERTICALS X 15'-0" LONG 10M TIES, 3@6" O/C, REM @ 36" O/C FROM TOP
P-2	16" DIA.	25'-0"	4-15M VERTICALS X 25'-0" LONG 10M TIES, 3@6" O/C, REM @ 36" O/C FROM TOP



TYPICAL C.I.P. CONCRETE PILE DETAIL

THE INSTALLATION OF ALL PILES SHALL BE INSPECTED AND APPROVED BY A COMPETENT SOILS ENGINEER PRIOR TO PLACEMENT OF CONCRETE.

CONCRETE BEAM SCHEDULE					
MARK	BEAM SIZE (W X D)	TOP RFG. CONT.	BOTTOM RFG. CONT.	STIRRUP - SIZE & SPC'G FROM F.O. EA. SUPPORT	REMARKS
B-1	8" X 36"	2 - 15M	2 - 15M	10M @ 16" O/C	-



TYPICAL BEAM FOUR JOINT

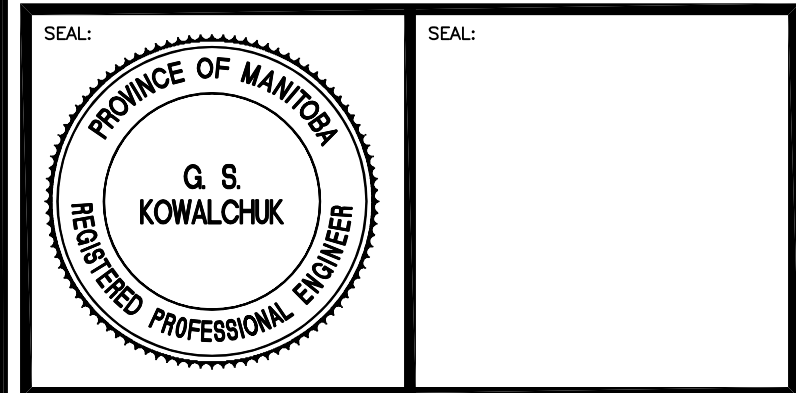
DESIGN LOADS
LIVE LOAD = 100 psf
DEAD LOAD = 20 psf

FDTN & MAIN FLOOR FRAMING PLAN
SCALE 1/4" = 1'-0"

APEGM
Certificate of Authorization
Kowalchuk Consulting Engineers Ltd.
No. 1777 Expiry: April 30, 2007



1	ISSUED FOR TENDER	Jul 26, 2006	LK
0	-	-	CML
REV	DESCRIPTION	DATE	BY



THIS DRAWING MUST NOT BE SCALED.
THE CONTRACTOR SHALL VERIFY ALL DIMENSIONS, DATUMS AND LEVELS PRIOR TO COMMENCEMENT OF WORK AND IS HELD RESPONSIBLE FOR REPORTING ANY DISCREPANCY OR OMISSION TO THE CONTRACT ADMINISTRATOR IMMEDIATELY.
THIS DRAWING IS THE EXCLUSIVE PROPERTY OF NEIL COOPER ARCHITECT INC. AND CAN BE REPRODUCED ONLY WITH THE PERMISSION OF NEIL COOPER ARCHITECT INC., IN WHICH CASE THE REPRODUCTION MUST BEAR THEIR NAME AS THE ARCHITECTURAL FIRM.

DRAWING: **FOUNDATION AND MAIN FLOOR FRAMING PLANS**
PROJECT: **ADDITION TO 770 ROSS AVENUE**
Winnipeg, Manitoba

Neil Cooper Architect Inc.
Associate of Frederickson Cooper Architects
10-395 Berry Street, Winnipeg, Manitoba R3J 1N6

Kowalchuk
Consulting Engineers Ltd.
450 - 70 Arthur Street
Winnipeg, MB R3B 0Z7
Phone: (204) 488-0000
Fax: (204) 482-1004
E-mail: info@kco.com

DRAWN BY: CML	CHECKED BY: dp	SHEET NO: S1.1R1	REV NO:
DATE: Apr. 18, 2006	SCALE: As Noted	FILE: projects\2006\06070\06070-s1	