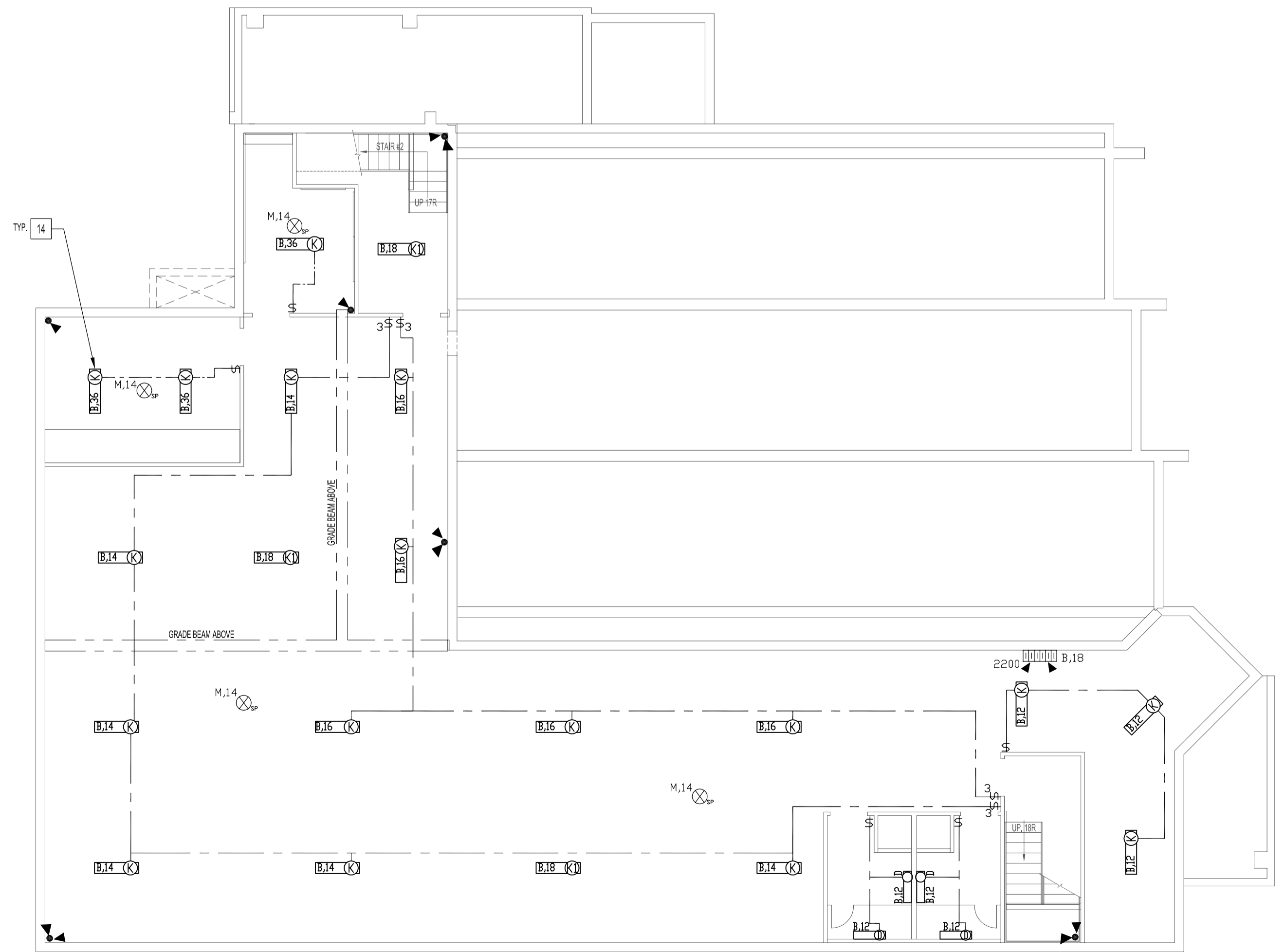


BASEMENT FLOOR PLAN - ELECTRICAL POWER
SCALE: 1:100

- 1 CONDUCTORS FED FROM C.S.T.E.
- 2 3C-10 TECK CABLE TO PANEL 'P', SEE DRAWING E1.
- 3 METER, CONTACTOR AND TIMER FOR PANEL 'P' (PARKING PANEL).
- 4 PANEL 'P'.
- 5 ELECTRICAL DISTRIBUTION EQUIP. BACKBOARD. SEE DRAWING A2, NOTES.
- 6 SERVICE ENTRANCE DISTRIBUTION, 400A, 120-240V/1Ø. SEE DRAWING E7.
- 7 ELECTRIC HEATER.
- 8 EMERGENCY LIGHTING BATTERY PACK RECEPTACLE 2200 ABOVE FLOOR.
- 9 3Ø TRAFFIC SIGNAL PVC RIGID CONDUIT C/W PULL BOX CONTINUED ON E1.
- 10 SWITCHES FOR GAS SHUT-OFF TO AHU-1 & AHU-2, MOUNT 2200 ABOVE FLOOR WITH RED COVER PLATES LABELLED AHU-1 & AHU-2.
- 11 SUPPLY & INSTALL POWER DISCONNECT FOR FURNACES, HOT WATER HEATER AND CIRCULATING PUMP.
- 12 TRAFFIC PRE-EMPTION UNDERGROUND WIRING TO BASEMENT PULL BOX.
- 13 PROVIDE (3) ISOLATED GROUND RECEPTACLES.
- 14 LIGHT FIXTURES IN BASEMENT SHALL BE SURFACE MOUNTED BELOW CEILING. IF MECHANICAL PIPING, DUCTWORK MAKE IT IMPOSSIBLE, SUSPEND LIGHT FIXTURES WITH CHAINS FROM CEILING AS HIGH AS POSSIBLE.

NOTES :
SEE NOTES ON DRAWING E1.



BASEMENT FLOOR PLAN - ELECTRICAL LIGHTING
SCALE: 1:100

ORIGINAL STAMPED BY: DOUG PALEY, P.ENG.
DATE: 2006.07.14

NO.	REVISION/DESCRIPTION	BY	DATE
SEALS			

DRAWN BY	CHECKED BY	APPROVED
RCPI/DTA	USER APPROVAL	

CITY OF WINNIPEG
PLANNING, PROPERTY & DEVELOPMENT DEPARTMENT
CIVIC ACCOMMODATIONS DIVISION
300 - 65 GARRY ST. R3C 4K4

PROJECT
WEST TRANSCONA
FIRE PARAMEDIC STATION 21

1446 REGENT AVE. WEST
SHEET TITLE

BASEMENT FLOOR PLAN
ELECTRICAL
POWER & LIGHTING

METRIC
WHOLE NUMBERS ARE IN MILLIMETRES,
DECIMALIZED NUMBERS ARE IN METRES

SCALE	PROJECT NO.	SHEET NO.
AS SHOWN	2004-058-01	E3