

BASEMENT FLOOR PLAN - VOICE, DATA, COMMUNICATION
SCALE: 1:100

LEGEND	
ITEM	DESCRIPTION (SUPPLIED & INSTALLED BY CONTRACTOR, UNLESS OTHERWISE SPECIFIED)
[1]	PULL BOXES (300x300x100) 16 GA. MIN. WITH KNOCKOUTS, PAINTED)
[2]	PULL BOXES (480x480x150) 16 GA. MIN. WITH KNOCKOUTS, PAINTED GALV.) MOUNT PULL BOXES & EMT PARALLEL WITHOUT ELBOYS AND AS CLOSE AS POSSIBLE TO STRUCTURAL CEILING.
[CAB-1]	NETWORK CABINET, WALL MOUNT WITH LOCKABLE FRONT DOOR, VENTILATION GRILLES ON SIDES, RACK MOUNT SYSTEM (760x600x600 MIN.), MOUNT 1000 ABOVE FLOOR TO BOTTOM OF CABINET.
100-001	DATA DUPLEX JACK (CAT-6), BLUE, WITH WHITE FACE PLATE. MOUNT SAME HEIGHT AS ELECTRICAL RECEPTACLES.
S110-001	"SHAW" INTERNET OUTLET, LIGHT BLUE, WITH WHITE FACE PLATE. MOUNT SAME HEIGHT AS ELECTRICAL RECEPTACLES.
T001	TELEPHONE - PRIVATE LINE WITH (5) PHONE NUMBERS. SUPPLY & INSTALL DEVICE BOXES, MOUNT SAME HEIGHT AS ELECTRICAL RECEPTACLES. CABLING & TERMINATION TO BE INSTALLED BY MTS UNDER DIRECTIONS OF CTY OF WINNIPEG CORPORATE IT.
CEM001	TELEPHONE - CENTREX SYSTEM. SUPPLY & INSTALL DEVICE BOXES, MOUNT SAME HEIGHT AS ELECTRICAL RECEPTACLES. CABLING & TERMINATION TO BE INSTALLED BY MTS UNDER DIRECTIONS OF CTY OF WINNIPEG CORPORATE IT.
PBX001	TELEPHONE - PBX SYSTEM. SUPPLY & INSTALL DEVICE BOXES, MOUNT SAME HEIGHT AS ELECTRICAL RECEPTACLES. CABLING & TERMINATION TO BE INSTALLED BY MTS UNDER DIRECTIONS OF CTY OF WINNIPEG CORPORATE IT.
[C]	CABLE TELEVISION OUTLET WIRED FROM ELECTRICAL ROOM. MOUNT SAME HEIGHT AS ELECTRICAL RECEPTACLES.

- HANG ALL EMT FLUSH TO UNISTRUTS & FASTEN TO THE UNDERSIDE OF MAIN FLOOR. SUPPLY & INSTALL WITH ALL REQUIRE COMPONENTS. ALL EMT ENDS SHALL BE FREE OF BURRS, SHARP EDGES & TERMINATED WITH PLASTIC BUSHINGS.
- INSTALL CONDUIT SLEEVE PRIOR TO CONCRETE POUR. SLEEVES THROUGH CONCRETE SHALL BE SCHEDULE 40 GALVANIZED PIPE, SIZED FOR FREE PASSAGE OF CONDUIT AND PROTRUDING 50 EACH SIDE.
- ROUTE CONDUITS UP THROUGH CONTROL RM. COUNTER BEHIND SLIDING DOOR.
- SUPPLY VISIBLE & AUDIBLE INDICATOR TO HOOKUP TO PBX PHONE. INSTALL ADJACENT TO PHONE & 2100 ABOVE FLOOR.
- SUPPLY & INSTALL POLYPROPYLENE FISH CORD WITH 3000 SPARE LENGTH AT EACH END OF CONDUIT FOR ALL TELEPHONE DEVICE BOXES.

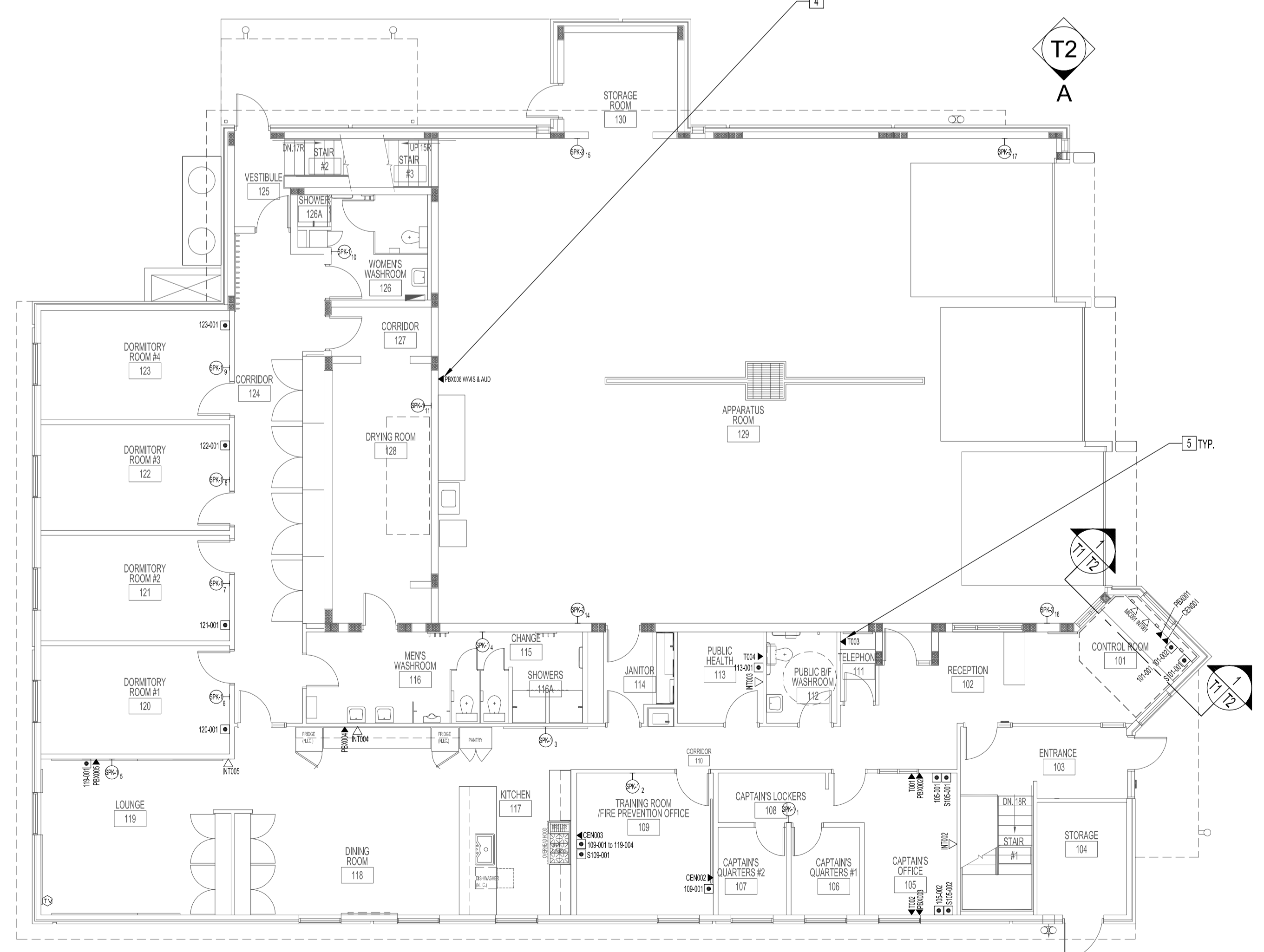
RADIO EQUIPMENT SCHEDULE		
ITEM	QTY	DESCRIPTION (SUPPLIED & INSTALLED BY CONTRACTOR, UNLESS OTHERWISE SPECIFIED)
ANT	1	ANTENNA OUTDOOR: 800 MHZ (MAXRAD MFB8135) (SUPPLIED BY CIT-CSB). CABLES (LMR400) CONNECTORS (TYPE "N") AND AUXILIARIES SUPPLIED BY CONTRACTOR. "POLYPHASE" IN-LINE LIGHTNING ARRESTOR FOR ANTENNA CABLE.
MAST	1	MAST FOR ANTENNA: 2-1/2" SCH. 80 ALUMINUM PIPE, 6351-T6, LENGTH DETERMINED BY POSITION OF ANTENNA ABOVE PEAK OF TOWER TO BASE OF TOWER PARAPET. AS SHOWN ON DRAWING T2, BUILDING SECTION.
GRD		GROUNDING HARDWARE FOR ANTENNA & MAST: No. 0 AWG COPPER (MIN.) FROM MAST TO 1.8 METRES LONG (MIN.) GROUND ROD DRIVEN INTO THE GROUND AS CLOSE AS POSSIBLE TO ANTENNA MAST. ANTENNA CABLE GROUND KIT.
RADIO	1	TWO-WAY RADIO (MOTOROLA MODEL LCS2000), MICROPHONE (MOTOROLA MODEL HM3000B) RADIO SUB-BASE, POWER SUPPLY (MOTOROLA VPM1022A OR HPN4002B) SUPPLIED BY CIT-CSB.

PAGING EQUIPMENT SCHEDULE		
ITEM	QTY	DESCRIPTION (SUPPLIED & INSTALLED BY CONTRACTOR, UNLESS OTHERWISE SPECIFIED)
AMP	1	AMPLIFIER 8-CHANNEL 120W, PUBLIC ADDRESS (PA) (TOA A-912M2C) WITH FIVE (5) TOA MODULES: ALERT CIRCUIT GONG MODULE (S-03), FLEETNET AUDIO & INTERCOM ALL-CALL FUNCTION LINE IP MODULES (QTY (2) B-01S), DESK MICROPHONE MODULE (M-11S), DESK MICROPHONE MODULE (M-880J).
[SPEAKER]	15	SPEAKER (TOA BS-1030W), WITH GRILLE & WALL MOUNT BRACKETS, MOUNT 2300 ABOVE FINISHED FLOOR. COLOUR TO BE WHITE. TWO-WAY BASS REFLEX COMPATIBLE WITH LOW & HIGH IMPEDENCE SPEAKER SYSTEMS & INCLUDE A BUILT-IN 70.7/100V MATCHING TRANSFORMER. THE REAR PANEL SHALL HAVE SCREWDRIVER-ADJUSTABLE TAP SETTINGS OF: 30W, 20W, 15W, 10W, & 5W PLUS A BYPASS SETTING FOR DIRECT & OHM OPERATION.
[SPEAKER]	4	SPEAKER WIDE-RANGE 30W PAGING (TOA CS-304), WITH GRILLE & STAINLESS-STEEL WALL MOUNT BRACKETS, MOUNT 3000 FROM FINISHED FLOOR. COLOUR TO BE WHITE. WEATHER-RESISTANT. BUILT-IN 70.7/100V MATCHING TRANSFORMER. SCREWDRIVER-ADJUSTABLE POWER TAPS
[CAB-1]	1	SECTIONAL WALL MOUNT RACK, MIDDLE ATLANTIC (DWR12-22) WITH 711mm OVERALL HEIGHT, 533mm RACKING HEIGHT, 12 RACK SPACES, 90 kg CAPACITY. MOUNT 1000 ABOVE FLOOR TO BOTTOM OF CABINET.
UPS	1	UNINTERRUPTIBLE POWER SUPPLY (UPS), 1.4 KVA WITH EXTERNAL ALARM INTERFACE. SUPPLIED BY CIT-CSB.
MICROPHONE		DESK MICROPHONE OUTLET MOUNTED BELOW COUNTER BEHIND SLIDING DOORS. WIRED FROM AMP IN ELECTRICAL ROOM.

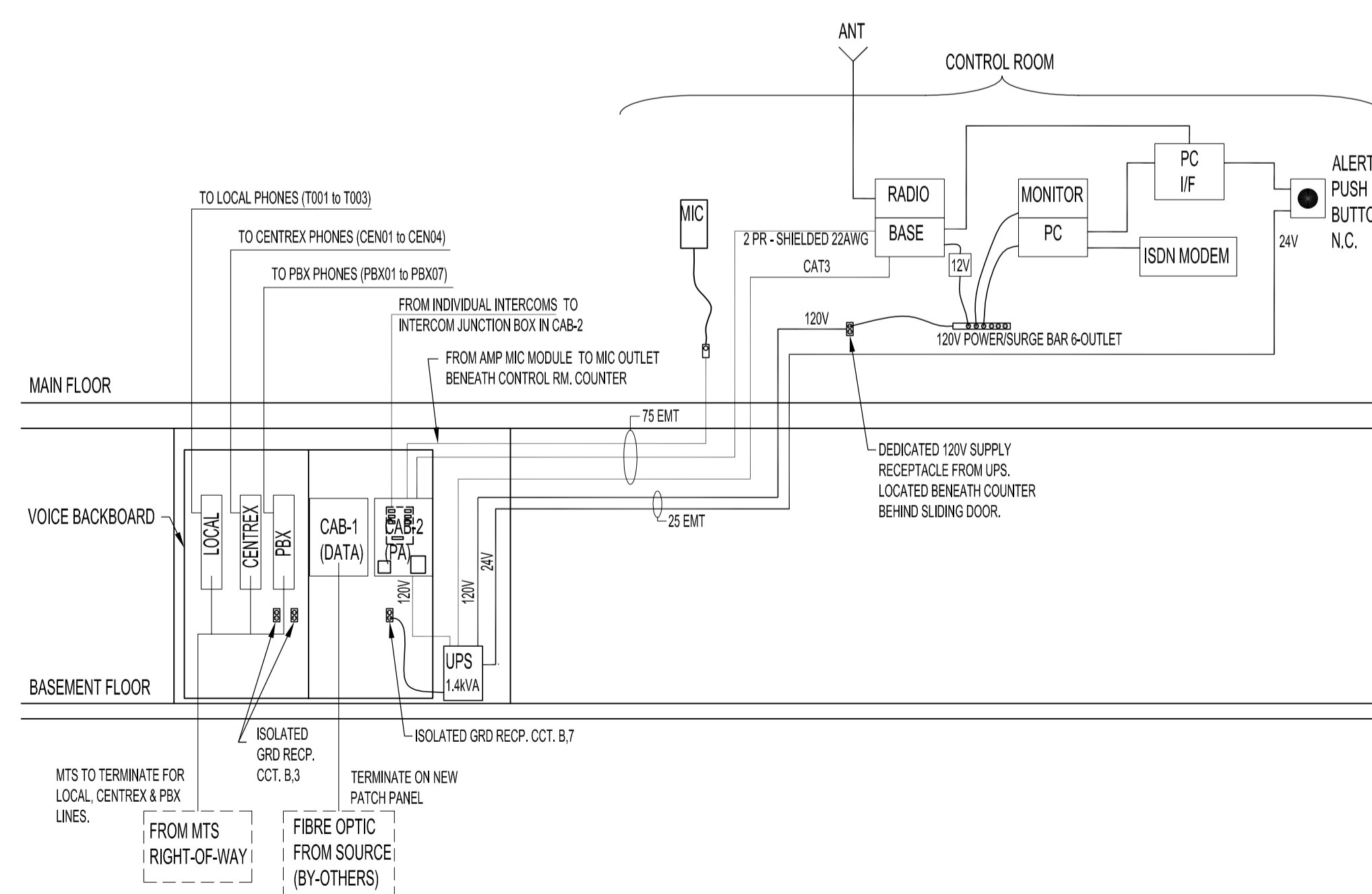
INTERCOM SYSTEM SCHEDULE		
ITEM	QTY	DESCRIPTION (SUPPLIED & INSTALLED BY CONTRACTOR, UNLESS OTHERWISE SPECIFIED)
INTERCOM	6	INTERCOM HANDETS, RINGMASTER (A6601), COLOUR: WHITE, (SUPPLIED BY CIT-CSB), SUPPLY & INSTALL WITH STAINLESS STEEL FACE PLATE / WALL JACK ADJACENT (150) TO STAINLESS STEEL FACE PLATE / INTERCOM HANDETS. HEIGHT TO BE 1200 ABOVE FINISHED FLOOR.

NOTES :
 BID OPPORTUNITY No: 379-2006.
 THESE DRAWINGS SHALL NOT BE SCALED.
 REFER TO BID OPPORTUNITY PROJECT SPECIFICATION FOR ADDITIONAL INFORMATION.
 THE CONTRACTOR SHALL VISIT THE SITE AND SATISFY ONESELF ALL DIMENSIONS, DATUM, AND DETAILED INFORMATION SHOWN ARE CORRECT.
 THE CONTRACTOR IS TO REVIEW AND COORDINATE ALL ARCHITECTURAL, MECHANICAL, ELECTRICAL, STRUCTURAL & COMMUNICATION DRAWINGS FOR LAYOUTS & ADDITIONAL OPENINGS THROUGH FLOORS, WALLS, AND CEILINGS FOR DUCT, PIPE & ELECTRICAL RISERS AND ALL OPENINGS NOT SHOWN ON DRAWINGS.
 ALL OPENINGS THROUGH FIRE ASSEMBLIES ARE TO BE FIRE STOPPED AND SEALED WITH ULC APPROVED FIRE STOPPING TO MAINTAIN THE INTEGRITY OF THE FIRE SEPARATION, AND PROVIDE A SMOKE-TIGHT BARRIER.
 ALL PRODUCTS AND MATERIALS TO BE USED AND INSTALLED SHALL CONFORM WITH MANUFACTURERS SPECIFICATIONS & APPLICABLE CODES.
 THE CONTRACTOR SHALL BE RESPONSIBLE TO PATCH AND MAKE GOOD ALL EXISTING CONSTRUCTION AFFECTED BY THE REMOVAL OF ALL ITEMS FORMING THE PART OF THE RENOVATION WORK.
 WHERE NEW FLOORING AND BASE IS TO BE INSTALLED IN EXISTING AREAS (REFER TO FLOOR PLAN AND ROOM SCHEDULE) THE EXISTING FLOORING SURFACE AND BASE MUST BE REMOVED, UNLESS OTHERWISE NOTED. ALL FLOOR SURFACES SHALL BE PREPARED IN ACCORDANCE TO MANUFACTURER'S RECOMMENDATIONS FOR INSTALLATION OF NEW FLOOR.
 WHERE PAINTING OF EXISTING WALLS IS INDICATED ON THE ROOM SCHEDULE, THESE WALLS MUST BE CLEANED OF ANY EXISTING WALL COVERING, PATCHED & PREPARED TO ACCEPT NEW MATERIAL, UNLESS OTHERWISE NOTED.
 ALL UNDERGROUND SERVICES AND PAVING ON CITY RIGHT-OF-WAY SHALL BE IN ACCORDANCE WITH THE CITY OF WINNIPEG STANDARD CONSTRUCTION SPECIFICATIONS. LOCATION OF UNDERGROUND SERVICES AS SHOWN ARE BASED ON THE BEST INFORMATION AVAILABLE BUT NO GUARANTEES IS GIVEN THAT ALL EXISTING UTILITIES ARE SHOWN OR THAT THE GIVEN LOCATIONS ARE EXACT. CONFIRMATION OF EXISTENCE AND EXACT LOCATION OF ALL SERVICES MUST BE OBTAINED FROM THE INDIVIDUAL UTILITIES BEFORE PROCEEDING WITH ANY CONSTRUCTION.
 LAYOUT SHOWN IS SCHEMATIC ONLY. LAYOUT MAY NOT REFLECT THE TRUE ROUTES. ALL ROUTINGS SHALL RUN PARALLEL OR PERPENDICULAR TO BUILDING LINES. GROUP SAME SERVICES, WHERE POSSIBLE, TO RUN PARALLEL OR PERPENDICULAR TO BUILDING LINES. ALL ROUTINGS SHALL RUN AS HIGH AS POSSIBLE AT THE CRAWLSPACE AND BASEMENT CEILING LEVEL.
 DO NOT PASS ROUTINGS THROUGH STRUCTURAL MEMBERS WITHOUT CONSULTING THE CONTRACT ADMINISTRATOR.
 QUANTITIES SHOWN ON DRAWINGS ARE FOR REFERENCE ONLY. CONTRACTOR IS RESPONSIBLE FOR QUANTITY TAKE-OFF FROM DRAWINGS.

VOICE, DATA AND COMMUNICATION DRAWING LIST	
SHEET No.	SHEET TITLE
T1	BASEMENT & MAIN FLOOR PLANS - VOICE, DATA AND COMMUNICATIONS, SCHEMATIC & SCHEDULES
T2	ELEVATION, SECTION AND DETAIL - VOICE, DATA AND COMMUNICATIONS



MAIN FLOOR PLAN - VOICE, DATA, COMMUNICATION
SCALE: 1:100



SCHEMATIC OF ELECTRICAL ROOM TO CONTROL ROOM
VOICE, DATA, COMMUNICATION

NO.	REVISION/DESCRIPTION	BY	DATE
SEALS			
DRAWN BY	DTA	CHECKED BY	APPROVED
DATE	2006.07.14	USER APPROVAL	

CITY OF WINNIPEG
 PLANNING, PROPERTY & DEVELOPMENT DEPARTMENT
 CIVIC ACCOMMODATIONS DIVISION
 300 - 65 GARRY ST. R3C 4K4

PROJECT
 WEST TRANSCONA
 FIRE PARAMEDIC STATION 21

1446 REGENT AVE. WEST

SCALE	PROJECT NO.	SHEET NO.
AS SHOWN	2004-058-01	T1

DRAWING SHEET SIZE: A1 (841mm x 594mm) PLOT 1:1