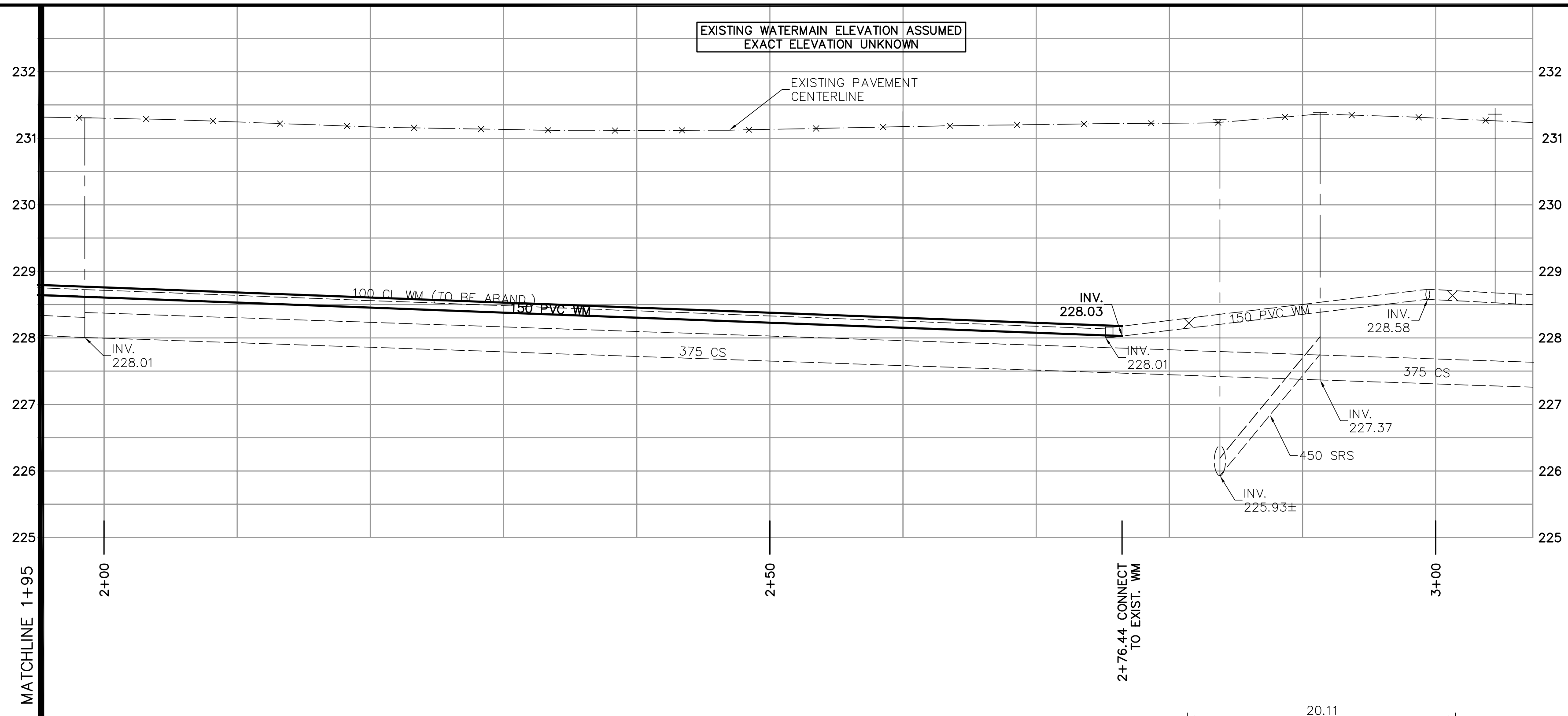
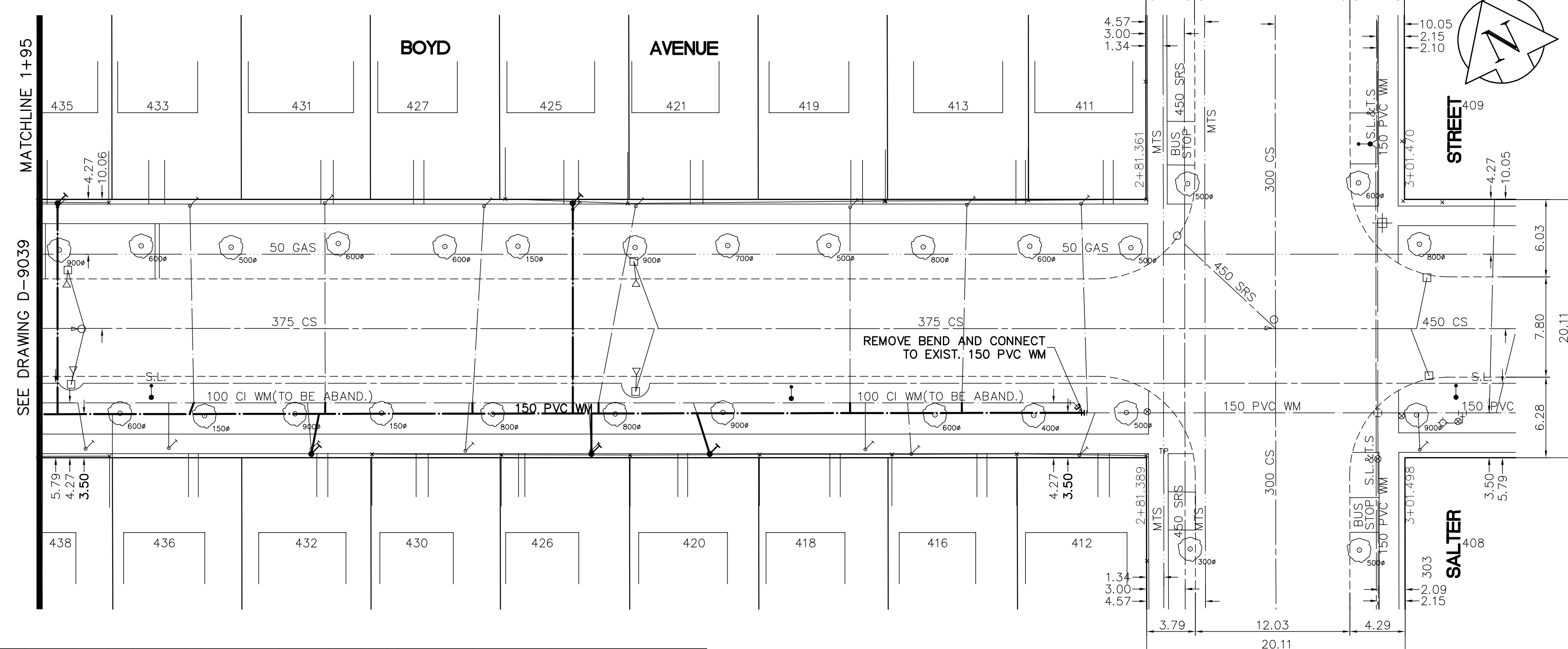


SHEET: COW-WM-A1 (11/2002) FILE NAME: L:\Work\10000\W2736\02a-CAD\Wm\Wm\Wm\W2736-C11.dwg
 LAYOUT NAME: 92736-C11 PLOTTED BY: michael.mccreath DATE: Jun 16, 2006 - 4:41pm

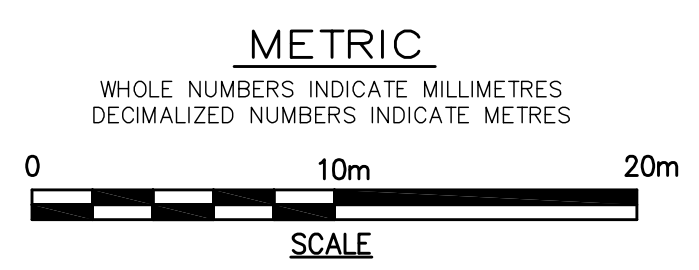


- CONSTRUCTION NOTES**
1. EXPOSE WATERMAIN CONNECTIONS AND CONFIRM INVERTS PRIOR TO CONSTRUCTION.
 2. INSTALL WATERMAIN BY TRENCHLESS METHODS.
 3. ALL MATERIALS SHALL CONFORM TO THE CITY OF WINNIPEG STANDARD CONSTRUCTION SPECIFICATIONS.
 4. MINIMUM COVER TO TOP OF PROPOSED WATERMAIN SHALL BE 2.5m FROM STREET CENTERLINE.
 5. INSTALL ALL HYDRANTS WITH FLANGE ELEVATION 50mm - 150mm ABOVE FINISHED GRADE.
 6. REPLACE ALL EXISTING LEAD SERVICES FROM THE PROPOSED WATERMAIN TO PROPERTY LINE.
 7. NOTIFY ALL AFFECTED RESIDENTS AND BUSINESSES 24 HOURS IN ADVANCE OF ANY WATER SHUTDOWN OR DISRUPTION OF SERVICE.
 8. LOCATION OF WATER SERVICES SHOWN ON DRAWINGS ARE APPROXIMATE. THE CONTRACTOR SHALL FIELD LOCATE ALL WATER SERVICES PRIOR TO CONSTRUCTION.
 9. ALL VALVES SHALL BE RED TOP (COUNTER CLOCKWISE TO CLOSE).
 10. BACKFILL UNDER OR WITHIN 1.0m OF PAVEMENTS, INCLUDING SIDEWALKS SHALL BE CLASS 3 BACKFILL EXCEPT AS NOTED. BACKFILL IN BOULEVARDS SHALL BE CLASS 5 BACKFILL.
 11. RENEW ALL LEAD SERVICES TO PROPERTY LINE.
 12. CHAINAGE MEASURED ALONG SOUTH PROPERTY LINE.



ADDRESS	NATURE OF SERVICE	SIZE	MATERIAL	DISTANCE SC TO PROPERTY	POSITION OF SC (curb stop)	POSITION OF CC (corp)	COMMENTS:
411 BOYD AV	RESIDENTIAL	19 mm	COPPER	0.3 m	Long: 4.9 m W of WL SALTER Short: 3.4 m W of WL BLDG	Long: 0.5 m E of S/C	CONN TO NEW W/MAIN MAY 93
412 BOYD AV	RESIDENTIAL	19 mm	COPPER	0.2 m	Long: 5.2 m W of WL SALTER Short: 3.5 m W of EL BLDG	Long: 1.2 m E of S/C	RENEWED & CONN TO NEW W/MAIN MAY 93
413 BOYD AV	RESIDENTIAL	19 mm	COPPER	0.6 m	Long: 13.9 m W of WL SALTER Short: 2.9 m W of EL BLDG	Long: 0.5 m W of S/C	
416 BOYD AV	RESIDENTIAL	19 mm	COPPER	0.3 m	Long: 18.3 m W of WL SALTER Short: 1.4 m E of WL BLDG	Long: 0.3 m W of S/C	SERV RENEWED 1961
418 BOYD AV	RESIDENTIAL	19 mm	COPPER	0.5 m	Long: 21.9 m W of WL SALTER Short: 1.7 m E of EL BLDG	Short: OPP of S/C	SERV RENEWED 1962
419 BOYD AV	RESIDENTIAL	19 mm	COPPER	0.5 m	Long: 23.5 m W of WL SALTER Short: 0.3 m E of EL BLDG	Long: OPP of S/C	RENEW TO PROPERTY
420 BOYD AV	RESIDENTIAL	13 mm	LEAD	0.3 m	Long: 34.1 m W of WL SALTER Short: 1.8 m W of EL BLDG	Long: 1.2 m W of S/C	SERV RENEWED 1961
421 BOYD AV	RESIDENTIAL	19 mm	COPPER	0.5 m	Long: 39.9 m W of WL SALTER Short: 0.3 m E of WL BLDG	Long: 2.9 m W of S/C	RENEW TO PROPERTY
425 BOYD AV	RESIDENTIAL	13 mm	LEAD	0.3 m	Long: 44.2 m W of WL SALTER Short: 1.8 m W of WL BLDG	Short: OPP of S/C	

ADDRESS	NATURE OF SERVICE	SIZE	MATERIAL	DISTANCE SC TO PROPERTY	POSITION OF SC (curb stop)	POSITION OF CC (corp)	COMMENTS:
426 BOYD AV	RESIDENTIAL	13 mm	LEAD	0.5 m	Long: 43.0 m W of WL SALTER Short: 0.9 m E of EL BLDG	Long: 0.2 m W of S/C	RENEW TO PROPERTY
427 BOYD AV	RESIDENTIAL	19 mm	COPPER	0.5 m	Long: 53.3 m W of WL SALTER Short: 1.8 m E of EL BLDG	Long: 0.9 m W of S/C	SERV RENEWED 1969
430 BOYD AV	RESIDENTIAL	19 mm	COPPER	0.5 m	Long: 63.9 m W of WL SALTER Short: 0.9 m E of EL BLDG	Long: 0.3 m E of S/C	SERV RENEWED 1970
431 BOYD AV	RESIDENTIAL	13 mm	COPPER	0.3 m	Long: 63.9 m W of WL SALTER Short: 2.5 m W of EL BLDG	Long: OPP of S/C	
432 BOYD AV	RESIDENTIAL	13 mm	LEAD	0.6 m	Long: 65.2 m W of WL SALTER Short: 2.4 m W of EL BLDG	Long: 0.3 m W of S/C	RENEW TO PROPERTY
433 BOYD AV	RESIDENTIAL	19 mm	COPPER	0.5 m	Long: 74.4 m W of WL SALTER Short: 0.8 m W of EL BLDG	Long: 0.3 m E of S/C	
435 BOYD AV	RESIDENTIAL	13 mm	LEAD	0.6 m	Long: 84.7 m W of WL SALTER Short: 2.1 m E of WL BLDG	Short: OPP of S/C	RENEW TO PROPERTY
436 BOYD AV	RESIDENTIAL	19 mm	COPPER	0.3 m	Long: 81.4 m W of WL SALTER Short: 3.5 m E of EL BLDG	Short: OPP of S/C	



EXISTING	LEGEND - PLAN	PROPOSED	EXISTING	LEGEND - PLAN	PROPOSED	EXISTING	LEGEND - PROFILE	PROPOSED
150 mm W.M.	WATERMAIN	150 mm W.M.	Hydro	HYDRANT	Hydro	300mm L.D.S.	LAND DRAINAGE SEWER	300mm L.D.S.
300mm L.D.S.	LAND DRAINAGE SEWER	300mm L.D.S.	CONCRETE	CONCRETE	CONCRETE	250mm W.W.S.	WASTE WATER SEWER	250mm W.W.S.
250mm W.W.S.	WASTE WATER SEWER	250mm W.W.S.	PROPERTY LINE	PROPERTY LINE	PROPERTY LINE			
	MANHOLE		SURVEY BAR	SURVEY BAR	SURVEY BAR			
	CATCH BASIN		CURB STOP	CURB STOP	CURB STOP			
	CURB INLET		TREE	TREE	TREE			
	JUNCTIONS		ANODE	ANODE	ANODE			
	CULVERT		CONCRETE SIDEWALK	CONCRETE SIDEWALK	CONCRETE SIDEWALK			
	GAS		FENCE	FENCE	FENCE			

LOCATION APPROVED UNDERGROUND STRUCTURES

SUPV. U/G STRUCTURES COMMITTEE DATE: _____

NOTE:
 LOCATION OF UNDERGROUND STRUCTURES AS SHOWN ARE BASED ON THE BEST INFORMATION AVAILABLE. BUT NO GUARANTEE IS GIVEN THAT ALL EXISTING UTILITIES ARE SHOWN OR THAT THE GIVEN LOCATIONS ARE EXACT. CONFIRMATION OF EXISTENCE AND EXACT LOCATION OF ALL SERVICES MUST BE OBTAINED FROM THE INDIVIDUAL UTILITIES BEFORE PROCEEDING WITH CONSTRUCTION.

B.M. 26-036 ELEV. 231.470 N.W. Cor. Church Ave. and Andrew St., brass plug in a 4.6m Conc. pile, 0.3m N. of the N.L. Church Ave. and 2.6m E. of the W.L. Andrew St.

EARTH TECH
 A tyco INTERNATIONAL LTD. COMPANY
 Earth Tech (Canada) Inc. Winnipeg, Manitoba 204.477.5381

DESIGNED BY: GDL, GSK CHECKED BY: GSK
 DRAWN BY: MAF APPROVED BY: KWF

HOR. SCALE: 1:250
 VERTICAL SCALE: 1:50

ISSUED FOR TENDER: 16/06/2004 GSK
 ISSUED FOR REVIEW: 14/06/2006 GSK

NO. REVISIONS DATE BY DATE DATE 04/05/2006 DATE 19/06/2006

ENGINEER'S SEAL
 ORIGINAL SIGNED BY: K.W. FITCHETT
 REGISTERED PROFESSIONAL ENGINEER
 16/06/2006

THE CITY OF WINNIPEG
 Winnipeg WATER AND WASTE DEPARTMENT

2006 WATERMAIN RENEWALS CONTRACT 19

BOYD AVENUE
 POWERS STREET TO SALTER STREET
 STA. 1+95 TO SALTER STREET

SHEET 3 OF 14
 CITY DRAWING NUMBER D-9039

CONSULTANT DRAWING NO. 92736-C11