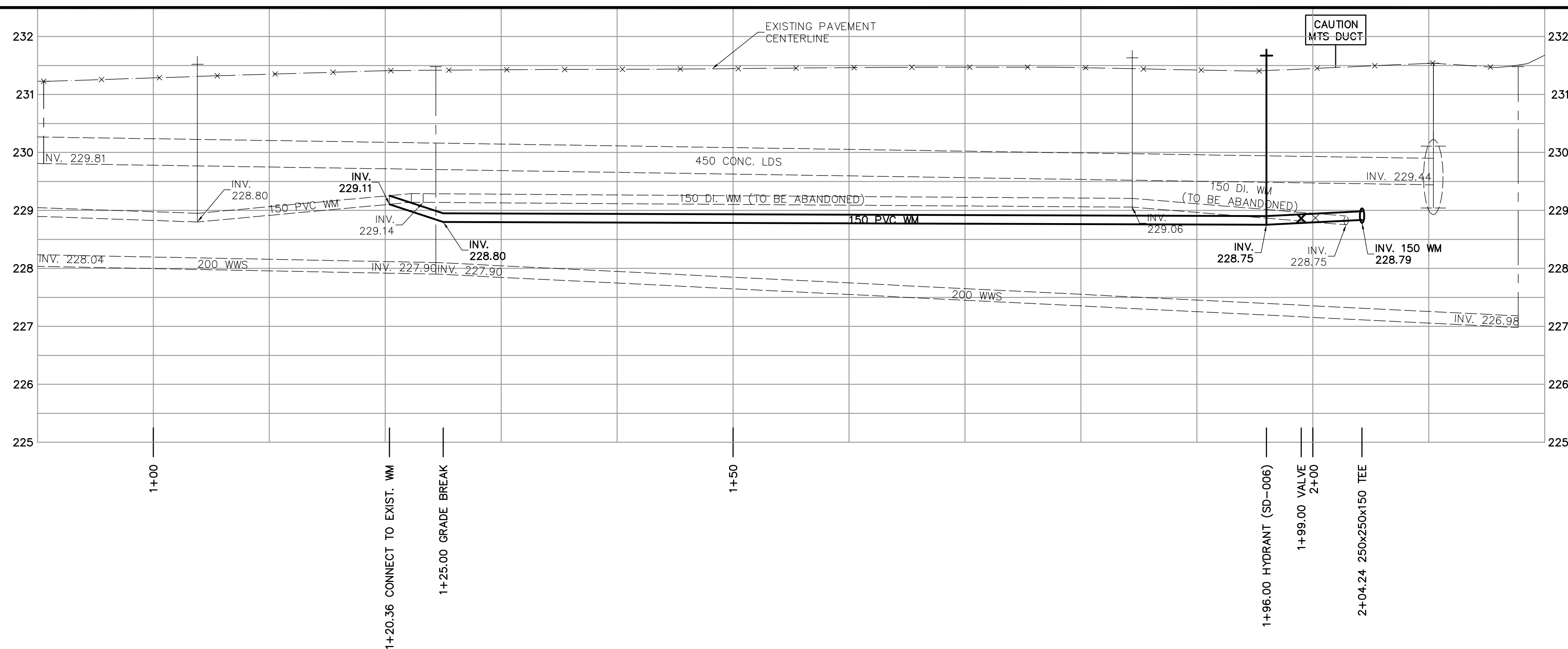
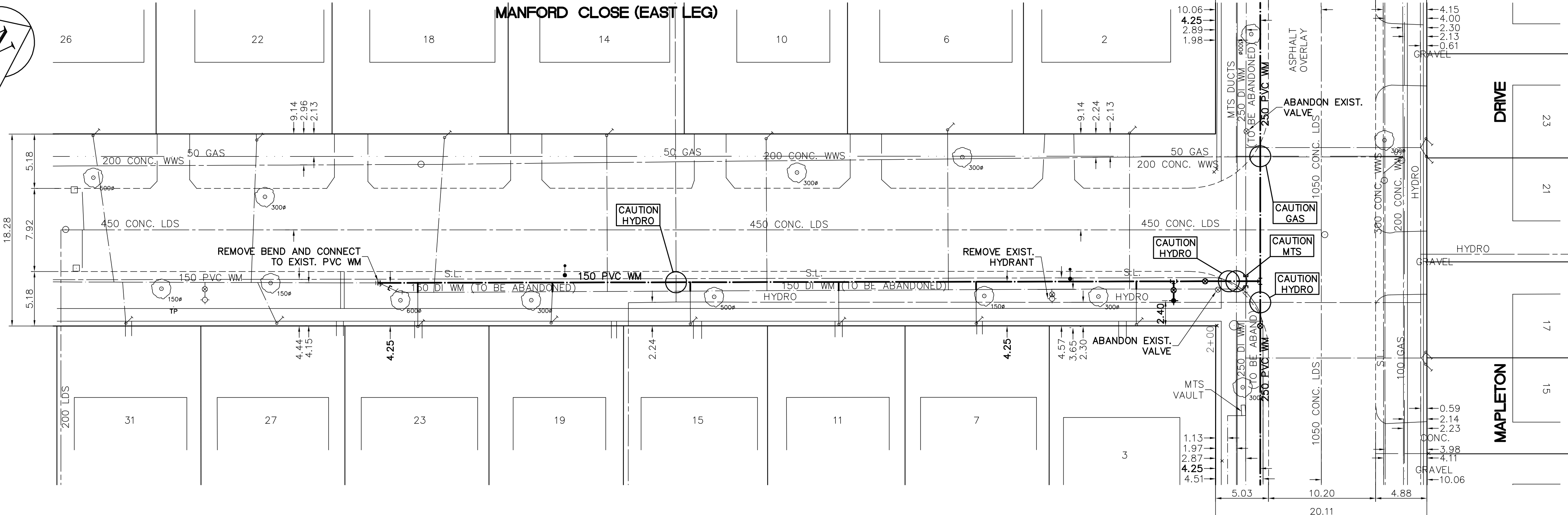
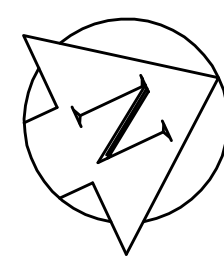


SHEET: COW-WM-A1 (11/2002) FILE NAME: L:\work\10000\10278\10278-CAD\Map\10278-C15.dwg PLOTTED BY: michael.kozlowski LAYOUT NAME: 92736-C15 Jan 16, 2006 - 4:43pm



- CONSTRUCTION NOTES**
1. EXPOSE WATERMAIN CONNECTIONS AND CONFIRM INVERTS PRIOR TO CONSTRUCTION.
 2. INSTALL WATERMAIN BY TRENCHLESS METHODS.
 3. ALL MATERIALS SHALL CONFORM TO THE CITY OF WINNIPEG STANDARD CONSTRUCTION SPECIFICATIONS.
 4. MINIMUM COVER TO TOP OF PROPOSED WATERMAIN SHALL BE 2.5m FROM STREET CENTERLINE.
 5. INSTALL ALL HYDRANTS WITH FLANGE ELEVATION 50mm-150mm ABOVE FINISHED GRADE.
 6. REPLACE ALL EXISTING LEAD SERVICES FROM THE PROPOSED WATERMAIN TO PROPERTY LINE.
 7. NOTIFY ALL AFFECTED RESIDENTS AND BUSINESSES 24 HOURS IN ADVANCE OF ANY WATER SHUTDOWN OR DISRUPTION OF SERVICE.
 8. LOCATION OF WATER SERVICES SHOWN ON DRAWINGS ARE APPROXIMATE. THE CONTRACTOR SHALL FIELD LOCATE ALL WATER SERVICES PRIOR TO CONSTRUCTION.
 9. ALL VALVES SHALL BE BLACK TOP (CLOCKWISE TO CLOSE).
 10. BACKFILL UNDER OR WITHIN 1.0m OF PAVEMENTS, INCLUDING SIDEWALKS SHALL BE CLASS 3 BACKFILL EXCEPT AS NOTED. BACKFILL IN BOULEVARDS SHALL BE CLASS 5 BACKFILL.
 11. CHAINAGE MEASURED ALONG EAST PROPERTY LINE.



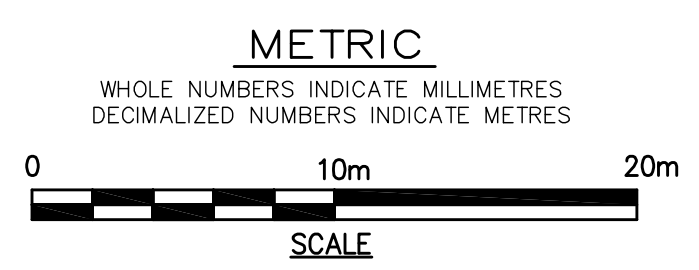
SEE DRAWING D-9049

SEE DRAWING D-9049

ADDRESS	NATURE OF SERVICE	SIZE	MATERIAL	DISTANCE SC TO PROPERTY	POSITION OF SC (curb stop)	POSITION OF CC (corp)	COMMENTS:
2	MANFORD CL RESIDENTIAL	19 mm	COPPER	0.0 m	Long: 7.6 m S of SL MAPLETON Short: 4.1 m S of NL BLDG	Long: 7.6 m S of SL MAPLETON Short: 4.1 m S of NL BLDG	
3	MANFORD CL RESIDENTIAL	19 mm	COPPER	0.0 m	Long: 25.1 m S of SL MAPLETON Short: 5.4 m S of NL BLDG	Long: 25.1 m S of SL MAPLETON Short: 5.4 m S of NL BLDG	
6	MANFORD CL RESIDENTIAL	19 mm	COPPER	0.1 m	Long: 29.2 m N of SL BLDG Short: 7.3 m N of SL BLDG	Long: 29.2 m N of SL BLDG Short: 7.3 m N of SL BLDG	
7	MANFORD CL RESIDENTIAL	19 mm	COPPER	0.0 m	Long: 38.8 m N of SL BLDG Short: 3.9 m N of SL MAPLETON	Long: 38.8 m N of SL BLDG Short: 3.9 m N of SL MAPLETON	
10	MANFORD CL RESIDENTIAL	19 mm	COPPER	0.0 m	Long: 44.7 m N of SL BLDG Short: 6.0 m S of SL MAPLETON	Long: 44.7 m N of SL BLDG Short: 6.0 m S of SL MAPLETON	
11	MANFORD CL RESIDENTIAL	19 mm	COPPER	0.0 m	Long: 50.2 m S of SL MAPLETON Short: 6.0 m S of NL BLDG	Long: 50.2 m S of SL MAPLETON Short: 6.0 m S of NL BLDG	

ADDRESS	NATURE OF SERVICE	SIZE	MATERIAL	DISTANCE SC TO PROPERTY	POSITION OF SC (curb stop)	POSITION OF CC (corp)	COMMENTS:
14	MANFORD CL RESIDENTIAL	19 mm	COPPER	0.3 m	Long: 44.7 m N of SL BLDG Short: 6.0 m S of SL MAPLETON	Long: 44.7 m N of SL BLDG Short: 6.0 m S of SL MAPLETON	
15	MANFORD CL RESIDENTIAL	19 mm	COPPER	0.1 m	Long: 29.2 m N of SL BLDG Short: 7.3 m N of SL BLDG	Long: 29.2 m N of SL BLDG Short: 7.3 m N of SL BLDG	
18	MANFORD CL RESIDENTIAL	19 mm	COPPER	0.1 m	Long: 38.8 m N of SL BLDG Short: 3.9 m N of SL MAPLETON	Long: 38.8 m N of SL BLDG Short: 3.9 m N of SL MAPLETON	
19	MANFORD CL RESIDENTIAL	19 mm	COPPER	0.0 m	Long: 44.7 m N of SL BLDG Short: 6.0 m S of SL MAPLETON	Long: 44.7 m N of SL BLDG Short: 6.0 m S of SL MAPLETON	
23	MANFORD CL RESIDENTIAL	19 mm	COPPER	0.0 m	Long: 50.2 m S of SL MAPLETON Short: 6.0 m S of NL BLDG	Long: 50.2 m S of SL MAPLETON Short: 6.0 m S of NL BLDG	

APEGM
Certificate of Authorization
Earth Tech Canada Inc.
No. 730 Expiry: April 30, 2007



EXISTING	LEGEND - PLAN	PROPOSED	EXISTING	LEGEND - PROFILE	PROPOSED	EXISTING	LEGEND - PROFILE	PROPOSED
	150 mm W.M.			HYDRANT			HYDRANT	
	VALVE			CONCRETE			ASPHALT	
	LAND DRAINAGE SEWER			PROPERTY LINE			SURVEY BAR	
	WASTEWATER SEWER			CURB STOP			TREE	
	MANHOLE			ANODE			CONCRETE SIDEWALK	
	CATCH BASIN			FENCE				
	CURB INLET							
	JUNCTIONS							
	CULVERT							
	GAS							

LOCATION APPROVED UNDERGROUND STRUCTURES

SUPV. U/G STRUCTURES COMMITTEE DATE

NOTE:
LOCATION OF UNDERGROUND STRUCTURES AS SHOWN ARE BASED ON THE BEST INFORMATION AVAILABLE. BUT NO GUARANTEE IS GIVEN THAT ALL EXISTING UTILITIES ARE SHOWN OR THAT THE GIVEN LOCATIONS ARE EXACT. CONFIRMATION OF EXISTENCE AND EXACT LOCATION OF ALL SERVICES MUST BE OBTAINED FROM THE INDIVIDUAL UTILITIES BEFORE PROCEEDING WITH CONSTRUCTION.

B.M. 15-063 Sheppard St. & Mapleton Dr., 10m. on top of 0.05m sq. x 2.4m from curb, 18.2m W. of E.L. of ELEV. 231.740 Sheppard St. & 14.9m S. of the N.L. Mapleton Dr.

EARTH TECH
A tyco INTERNATIONAL LTD. COMPANY
Earth Tech (Canada) Inc. Winnipeg, Manitoba 204.477.5381

DESIGNED BY: GDL, GSK
CHECKED BY: GSK

DRAWN BY: MAF
APPROVED BY: KWF

HOR. SCALE: 1:250
VERTICAL SCALE: 1:50

RELEASED FOR CONSTRUCTION BY: K. ZUREK

DATE: 04/05/2006
DATE: 19/06/2006

ENGINEER'S SEAL
PROVINCE OF MANITOBA
ORIGINAL SIGNED BY
K.W. FITCHETT
16/06/2006
REGISTERED PROFESSIONAL ENGINEER

THE CITY OF WINNIPEG
Winnipeg WATER AND WASTE DEPARTMENT

2006 WATERMAIN RENEWALS CONTRACT 19

MANFORD CLOSE EAST LEG
MAPLETON DR. TO 80m SOUTH OF MAPLETON DR.

SHEET 7 OF 14
CITY DRAWING NUMBER D-9043

CONSULTANT DRAWING NO. 92736-C15