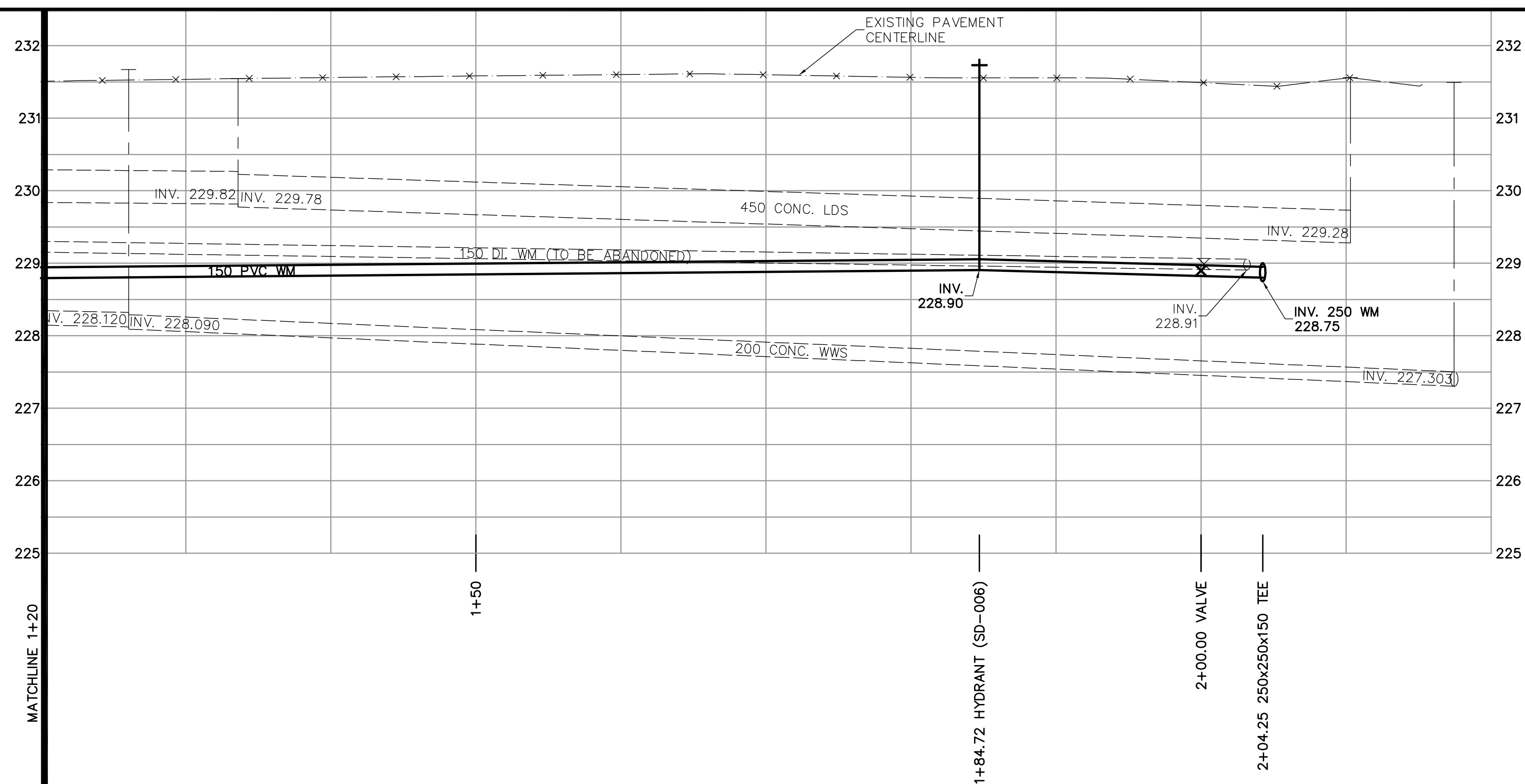
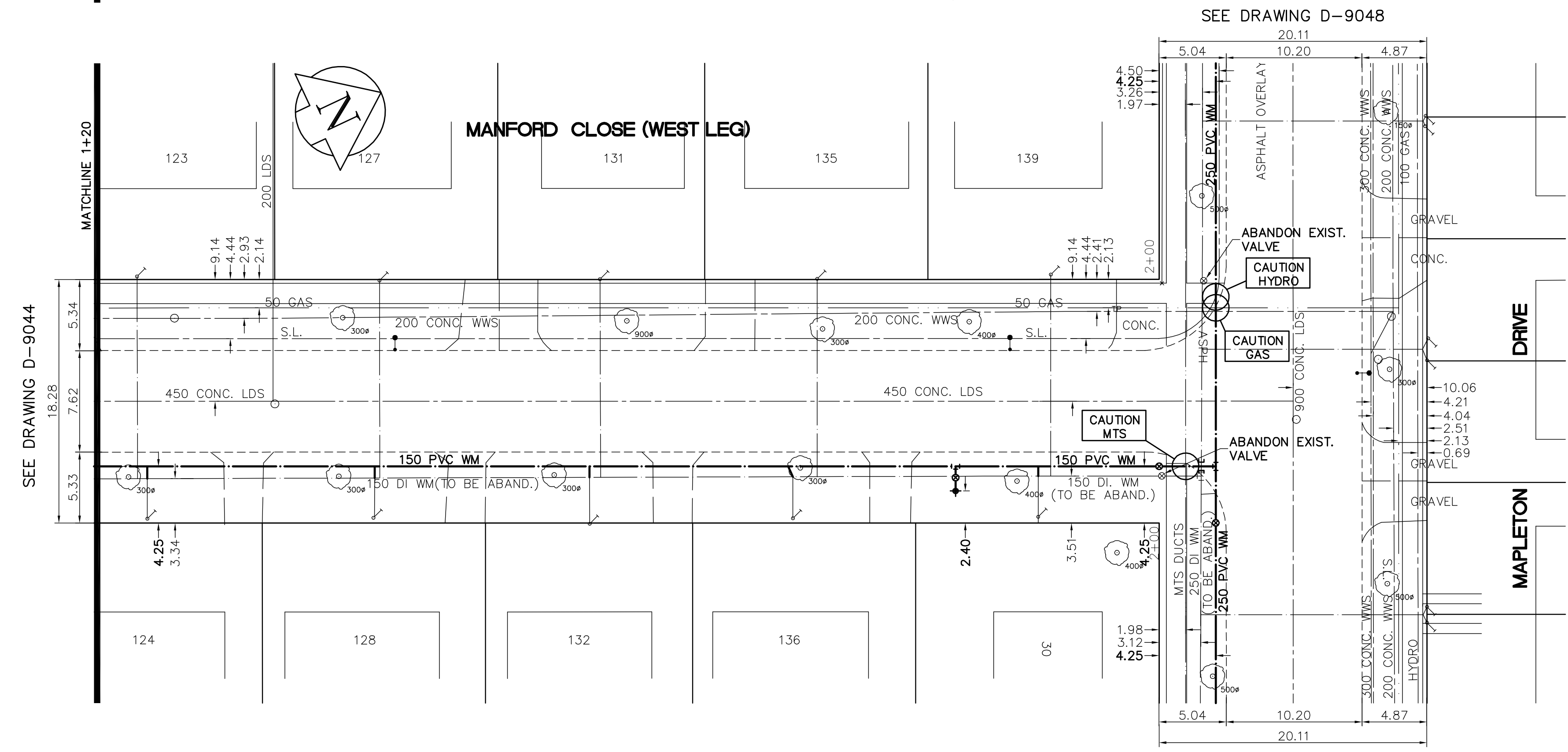


SHEET: COW-WM-A1 (11/2002) FILE NAME: L:\work\10000\W2736\020-cad\Mapleton\W2736-c17.dwg
 LAYOUT NAME: 92736-c17
 PLOTTED BY: michael.heseler
 Jun 16, 2006 - 4:45pm



- CONSTRUCTION NOTES**
1. EXPOSE WATERMAIN CONNECTIONS AND CONFIRM INVERTS PRIOR TO CONSTRUCTION.
 2. INSTALL WATERMAIN BY TRENCHLESS METHODS.
 3. ALL MATERIALS SHALL CONFORM TO THE CITY OF WINNIPEG STANDARD CONSTRUCTION SPECIFICATIONS.
 4. MINIMUM COVER TO TOP OF PROPOSED WATERMAIN SHALL BE 2.5m FROM STREET CENTERLINE.
 5. INSTALL ALL HYDRANTS WITH FLANGE ELEVATION 50mm-150mm ABOVE FINISHED GRADE.
 6. REPLACE ALL EXISTING LEAD SERVICES FROM THE PROPOSED WATERMAIN TO PROPERTY LINE.
 7. NOTIFY ALL AFFECTED RESIDENTS AND BUSINESSES 24 HOURS IN ADVANCE OF ANY WATER SHUTDOWN OR DISRUPTION OF SERVICE.
 8. LOCATION OF WATER SERVICES SHOWN ON DRAWINGS ARE APPROXIMATE. THE CONTRACTOR SHALL FIELD LOCATE ALL WATER SERVICES PRIOR TO CONSTRUCTION.
 9. ALL VALVES SHALL BE BLACK TOP (CLOCKWISE TO CLOSE).
 10. BACKFILL UNDER OR WITHIN 1.0m OF PAVEMENTS, INCLUDING SIDEWALKS SHALL BE CLASS 3 BACKFILL EXCEPT AS NOTED. BACKFILL IN BOULEVARDS SHALL BE CLASS 5 BACKFILL.
 11. CHAINAGE MEASURED ALONG EAST PROPERTY LINE.

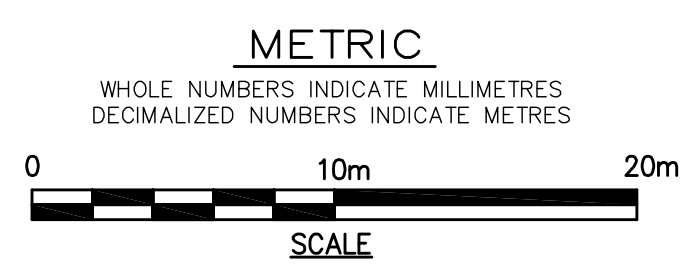


SEE DRAWING D-9048

SEE DRAWING D-9049

ADDRESS	NATURE OF SERVICE	SIZE	MATERIAL	DISTANCE SC TO PROPERTY	POSITION OF SC (curb stop)	POSITION OF CC (corp)	COMMENTS:
123	MANFORD CL RESIDENTIAL	19 mm	COPPER	0.3 m	Long: 0.4 m N of SL BLDG Short: 3.3 m S of SL BLDG	Long: of SL MAPLETON Short: of SL BLDG	
124	MANFORD CL RESIDENTIAL	19 mm	COPPER	0.0 m	Long: 5.7 m S of NL BLDG Short: 34.7 m S of NL BLDG	Long: of SL MAPLETON Short: of NL BLDG	
127	MANFORD CL RESIDENTIAL	19 mm	COPPER	0.0 m	Long: 6.4 m S of NL BLDG Short: 59.3 m S of SL MAPLETON	Long: of SL MAPLETON Short: of NL BLDG	
128	MANFORD CL RESIDENTIAL	19 mm	COPPER	0.1 m	Long: 42.3 m S of SL MAPLETON Short: 5.0 m S of NL BLDG	Long: of SL MAPLETON Short: of NL BLDG	
131	MANFORD CL RESIDENTIAL	19 mm	COPPER	0.0 m	Long: 4.6 m N of SL BLDG Short: of SL BLDG	Long: of SL BLDG Short: of SL BLDG	

ADDRESS	NATURE OF SERVICE	SIZE	MATERIAL	DISTANCE SC TO PROPERTY	POSITION OF SC (curb stop)	POSITION OF CC (corp)	COMMENTS:
132	MANFORD CL RESIDENTIAL	19 mm	COPPER	0.1 m	Long: 43.1 m S of SL MAPLETON Short: 4.9 m S of NL BLDG	Long: of SL MAPLETON Short: of NL BLDG	
135	MANFORD CL RESIDENTIAL	19 mm	COPPER	0.2 m	Long: 26.2 m S of SL MAPLETON Short: 5.1 m N of SL BLDG	Long: of SL MAPLETON Short: of SL BLDG	
136	MANFORD CL RESIDENTIAL	19 mm	COPPER	0.0 m	Long: 27.7 m S of SL MAPLETON Short: 6.0 m S of NL BLDG	Long: of SL MAPLETON Short: of NL BLDG	
139	MANFORD CL RESIDENTIAL	19 mm	COPPER	0.3 m	Long: 8.3 m S of SL MAPLETON Short: 4.7 m S of NL BLDG	Long: of SL MAPLETON Short: of NL BLDG	
30	MAPLETON DR RESIDENTIAL	19 mm	COPPER	0.3 m	Long: 9.3 m S of SL MAPLETON Short: 3.4 m N of SL BLDG	Long: of SL MAPLETON Short: of SL BLDG	



EXISTING	LEGEND - PLAN	PROPOSED	EXISTING	LEGEND - PLAN	PROPOSED	EXISTING	LEGEND - PROFILE	PROPOSED
	WATERMAIN			HYDRANT			WATERMAIN	
	VALVE			TELEPHONE			VALVE	
	CONCRETE			ASPHALT			LAND DRAINAGE SEWER	
	PROPERTY LINE			SURVEY BAR			WASTE WATER SEWER	
	CURB STOP			TREE			ANODE	
	CONCRETE SIDEWALK			FENCE				

LOCATION APPROVED UNDERGROUND STRUCTURES

SUPV. U/G STRUCTURES COMMITTEE DATE

NOTE:
 LOCATION OF UNDERGROUND STRUCTURES AS SHOWN ARE BASED ON THE BEST INFORMATION AVAILABLE. BUT NO GUARANTEE IS GIVEN THAT ALL EXISTING UTILITIES ARE SHOWN OR THAT THE GIVEN LOCATIONS ARE EXACT. CONFIRMATION OF EXISTENCE AND EXACT LOCATION OF ALL SERVICES MUST BE OBTAINED FROM THE INDIVIDUAL UTILITIES BEFORE PROCEEDING WITH CONSTRUCTION.

NO.	REVISIONS	DATE	BY
0	ISSUED FOR TENDER	16/06/2004	GSK
A	ISSUED FOR REVIEW	14/06/2006	GSK

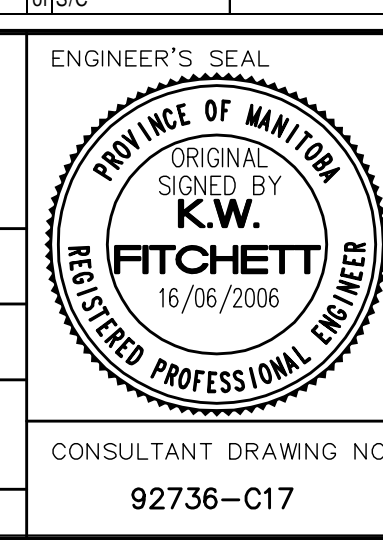
EARTH TECH
 tyco INTERNATIONAL LTD. COMPANY
 Earth Tech (Canada) Inc. Winnipeg, Manitoba 204.477.5381

DESIGNED BY: GDL, GSK
 CHECKED BY: GSK

DRAWN BY: MAF
 APPROVED BY: KWF

HOR. SCALE: 1:250
 VERTICAL SCALE: 1:50

RELEASED FOR CONSTRUCTION BY: K. ZUREK
 DATE: 04/05/2006



THE CITY OF WINNIPEG
 Winnipeg WATER AND WASTE DEPARTMENT

2006 WATERMAIN RENEWALS CONTRACT 19

MANFORD CLOSE WEST LEG
 STA. 1+20 TO MAPLETON DRIVE

SHEET 9 OF 14
 CITY DRAWING NUMBER D-9045

CONSULTANT DRAWING NO. 92736-C17