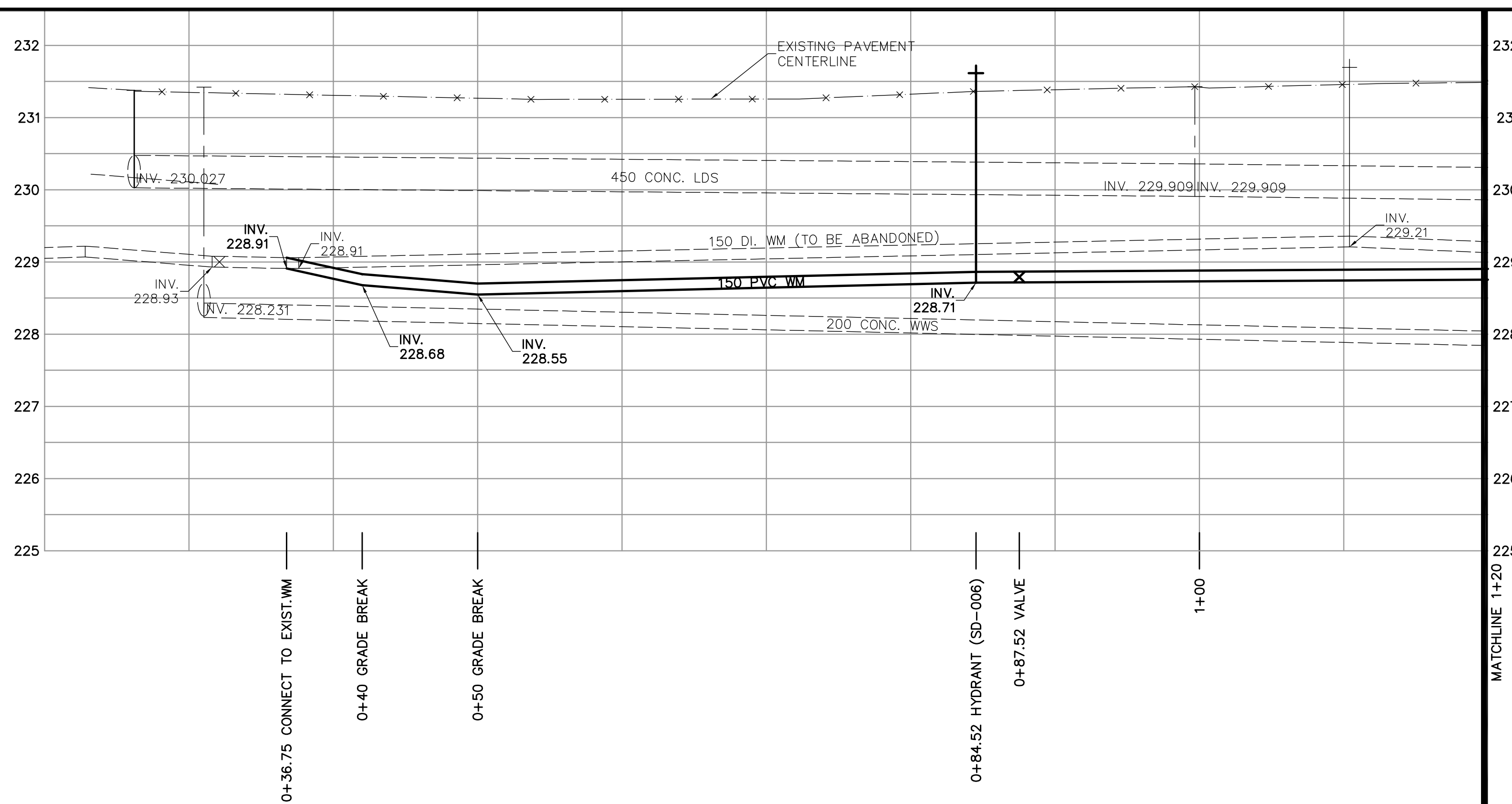
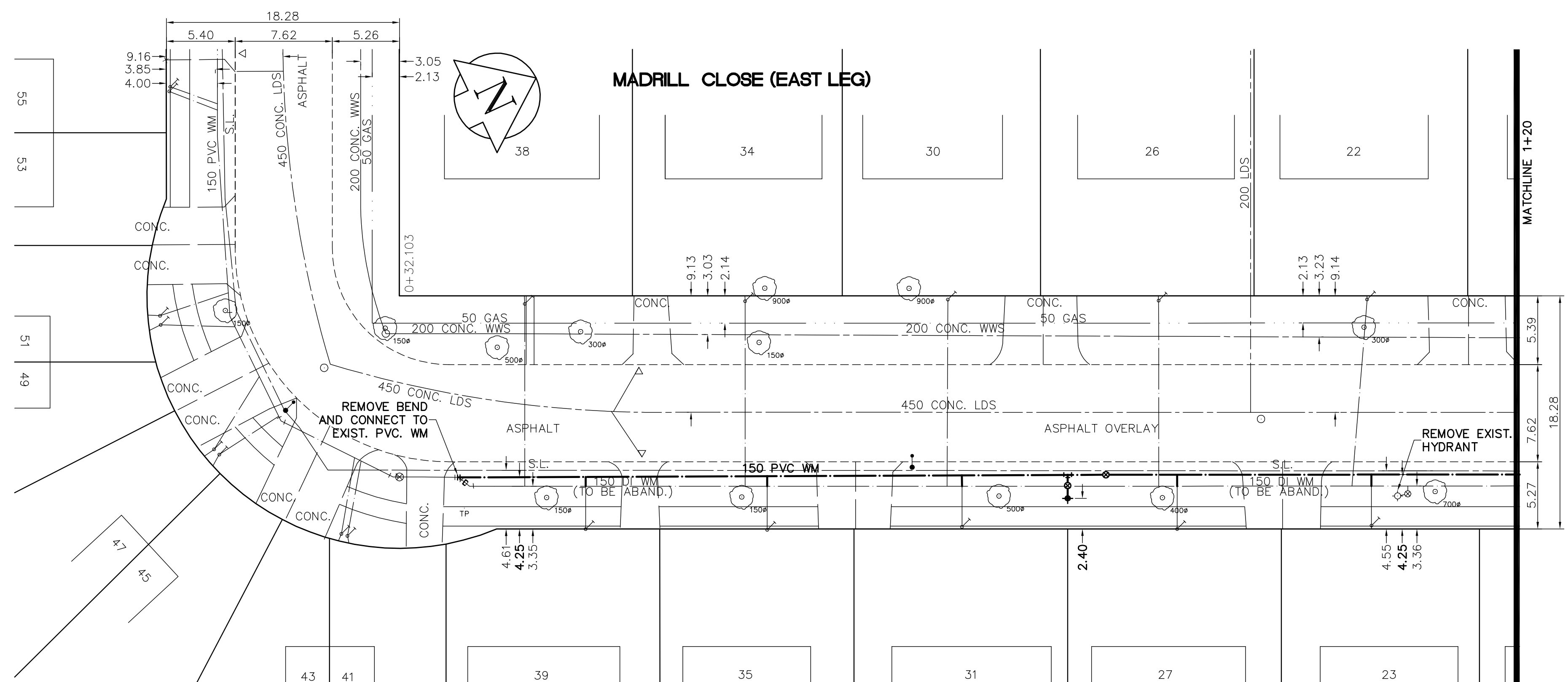


SHEET: COW-WMD-A1 (11/2002) FILE NAME: L:\work\10000\92736\02a-cad\plan\csm\92736-c18.dwg  
 LAYOUT NAME: 92736-C18 PLOTTED BY: michael.horvath DATE: 16/06/2006 4:46pm

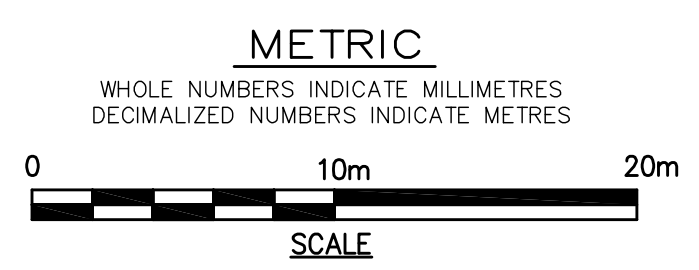


- CONSTRUCTION NOTES**
1. EXPOSE WATERMAIN CONNECTIONS AND CONFIRM INVERTS PRIOR TO CONSTRUCTION.
  2. INSTALL WATERMAIN BY TRENCHLESS METHODS.
  3. ALL MATERIALS SHALL CONFORM TO THE CITY OF WINNIPEG STANDARD CONSTRUCTION SPECIFICATIONS.
  4. MINIMUM COVER TO TOP OF PROPOSED WATERMAIN SHALL BE 2.5m FROM STREET CENTERLINE.
  5. INSTALL ALL HYDRANTS WITH FLANGE ELEVATION 50mm-150mm ABOVE FINISHED GRADE.
  6. REPLACE ALL EXISTING LEAD SERVICES FROM THE PROPOSED WATERMAIN TO PROPERTY LINE.
  7. NOTIFY ALL AFFECTED RESIDENTS AND BUSINESSES 24 HOURS IN ADVANCE OF ANY WATER SHUTDOWN OR DISRUPTION OF SERVICE.
  8. LOCATION OF WATER SERVICES SHOWN ON DRAWINGS ARE APPROXIMATE. THE CONTRACTOR SHALL FIELD LOCATE ALL WATER SERVICES PRIOR TO CONSTRUCTION.
  9. ALL VALVES SHALL BE BLACK TOP (CLOCKWISE TO CLOSE).
  10. BACKFILL UNDER OR WITHIN 1.0m OF PAVEMENTS, INCLUDING SIDEWALKS SHALL BE CLASS 3 BACKFILL EXCEPT AS NOTED. BACKFILL IN BOULEVARDS SHALL BE CLASS 5 BACKFILL.
  11. CHAINAGE MEASURED ALONG EAST PROPERTY LINE.



ADDRESS	NATURE OF SERVICE	SIZE	MATERIAL	DISTANCE SC TO PROPERTY	POSITION OF SC (curb stop)	POSITION OF CC (corp)	COMMENTS:
22 MADRILL CL	RESIDENTIAL	19 mm	COPPER	0.3 m	Long: 2.5 m S of ST HYDRANT MAPLETON Short: 6.9 m N of ST BLDG	Long: of S/C	
23 MADRILL CL	RESIDENTIAL	19 mm	COPPER	0.3 m	Long: 2.1 m S of ST HYDRANT MAPLETON Short: 4.3 m N of ST BLDG	Long: of S/C	
26 MADRILL CL	RESIDENTIAL	19 mm	COPPER	0.3 m	Long: 18.8 m S of ST HYDRANT MAPLETON Short: 6.0 m S of NL BLDG	Long: of S/C	
27 MADRILL CL	RESIDENTIAL	19 mm	COPPER	0.1 m	Long: 17.5 m S of ST HYDRANT MAPLETON Short: 5.2 m S of NL BLDG	Long: of S/C	
30 MADRILL CL	RESIDENTIAL	19 mm	COPPER	0.2 m	Long: 35.6 m S of ST HYDRANT MAPLETON Short: 4.5 m S of NL BLDG	Long: of S/C	

ADDRESS	NATURE OF SERVICE	SIZE	MATERIAL	DISTANCE SC TO PROPERTY	POSITION OF SC (curb stop)	POSITION OF CC (corp)	COMMENTS:
31 MADRILL CL	RESIDENTIAL	19 mm	COPPER	0.6 m	Long: 34.4 m S of ST HYDRANT MAPLETON Short: 5.4 m N of ST BLDG	Long: of S/C	
34 MADRILL CL	RESIDENTIAL	19 mm	COPPER	0.3 m	Long: 27.1 m N of NL MADRILL Short: 5.7 m N of ST BLDG	Long: of S/C	
35 MADRILL CL	RESIDENTIAL	19 mm	COPPER	0.0 m	Long: 29.0 m N of NL MADRILL Short: 3.4 m S of NL BLDG	Long: of S/C	
38 MADRILL CL	RESIDENTIAL	19 mm	COPPER	0.3 m	Long: 9.8 m N of NL MADRILL Short: 6.2 m N of ST BLDG	Long: of S/C	
39 MADRILL CL	RESIDENTIAL	19 mm	COPPER	0.0 m	Long: 14.6 m N of NL MADRILL Short: 3.1 m N of NL BLDG	Long: of S/C	



EXISTING	LEGEND - PLAN	PROPOSED	EXISTING	LEGEND - PROFILE	PROPOSED
150 mm W.M.	WATERMAIN	150 mm W.M.	Hydro	HYDRANT	Hydro
Hydrant	HYDRANT	Valve	Telephone	VALVE	Telephone
300mm L.D.S.	LAND DRAINAGE SEWER	300mm L.D.S.	Concrete	CONCRETE	Concrete
250mm W.W.S.	WASTEWATER SEWER	250mm W.W.S.	Asphalt	ASPHALT	Asphalt
Manhole	MANHOLE	Survey Bar	Property Line	PROPERTY LINE	Property Line
Catch Basin	CATCH BASIN	Curb Stop	Survey Bar	SURVEY BAR	Survey Bar
Curb Inlet	CURB INLET	Tree	Curb Stop	CURB STOP	Curb Stop
Junctions	JUNCTIONS	Anode	Tree	TREE	Tree
Culvert	CULVERT	Concrete Sidewalk	Anode	ANODE	Anode
Gas	GAS	Fence	Concrete Sidewalk	CONCRETE SIDEWALK	Concrete Sidewalk
			Fence	FENCE	Fence

**LOCATION APPROVED UNDERGROUND STRUCTURES**

SUPV. U/G STRUCTURES COMMITTEE DATE

**NOTE:**  
 LOCATION OF UNDERGROUND STRUCTURES AS SHOWN ARE BASED ON THE BEST INFORMATION AVAILABLE. BUT NO GUARANTEE IS GIVEN THAT ALL EXISTING UTILITIES ARE SHOWN OR THAT THE GIVEN LOCATIONS ARE EXACT. CONFIRMATION OF EXISTENCE AND EXACT LOCATION OF ALL SERVICES MUST BE OBTAINED FROM THE INDIVIDUAL UTILITIES BEFORE PROCEEDING WITH CONSTRUCTION.

NO.	REVISIONS	DATE	BY
0	ISSUED FOR TENDER	16/06/2004	GSK
A	ISSUED FOR REVIEW	14/06/2006	GSK

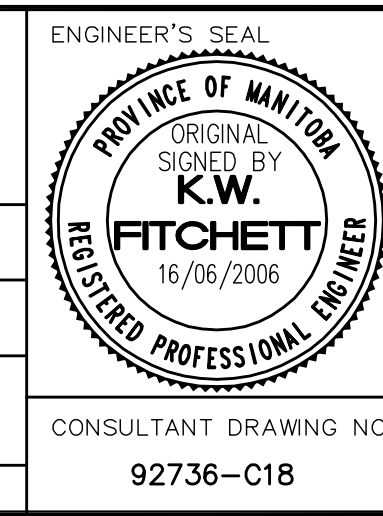
**EARTH TECH**  
 A tyco INTERNATIONAL LTD. COMPANY  
 Earth Tech (Canada) Inc. Winnipeg, Manitoba 204-477-5381

DESIGNED BY: GDL, GSK  
 CHECKED BY: GSK

DRAWN BY: MAF  
 APPROVED BY: KWF

HOR. SCALE: 1:250  
 VERTICAL SCALE: 1:50

RELEASED FOR CONSTRUCTION BY: K. ZUREK  
 DATE: 04/05/2006



**THE CITY OF WINNIPEG**  
 Winnipeg WATER AND WASTE DEPARTMENT

**2006 WATERMAIN RENEWALS CONTRACT 19**

MADRILL CLOSE EAST LEG  
 MADRILL CLOSE (SOUTH LEG) TO STA. 1+20

SHEET 10 OF 14  
 CITY DRAWING NUMBER D-9046

CONSULTANT DRAWING NO. 92736-C18