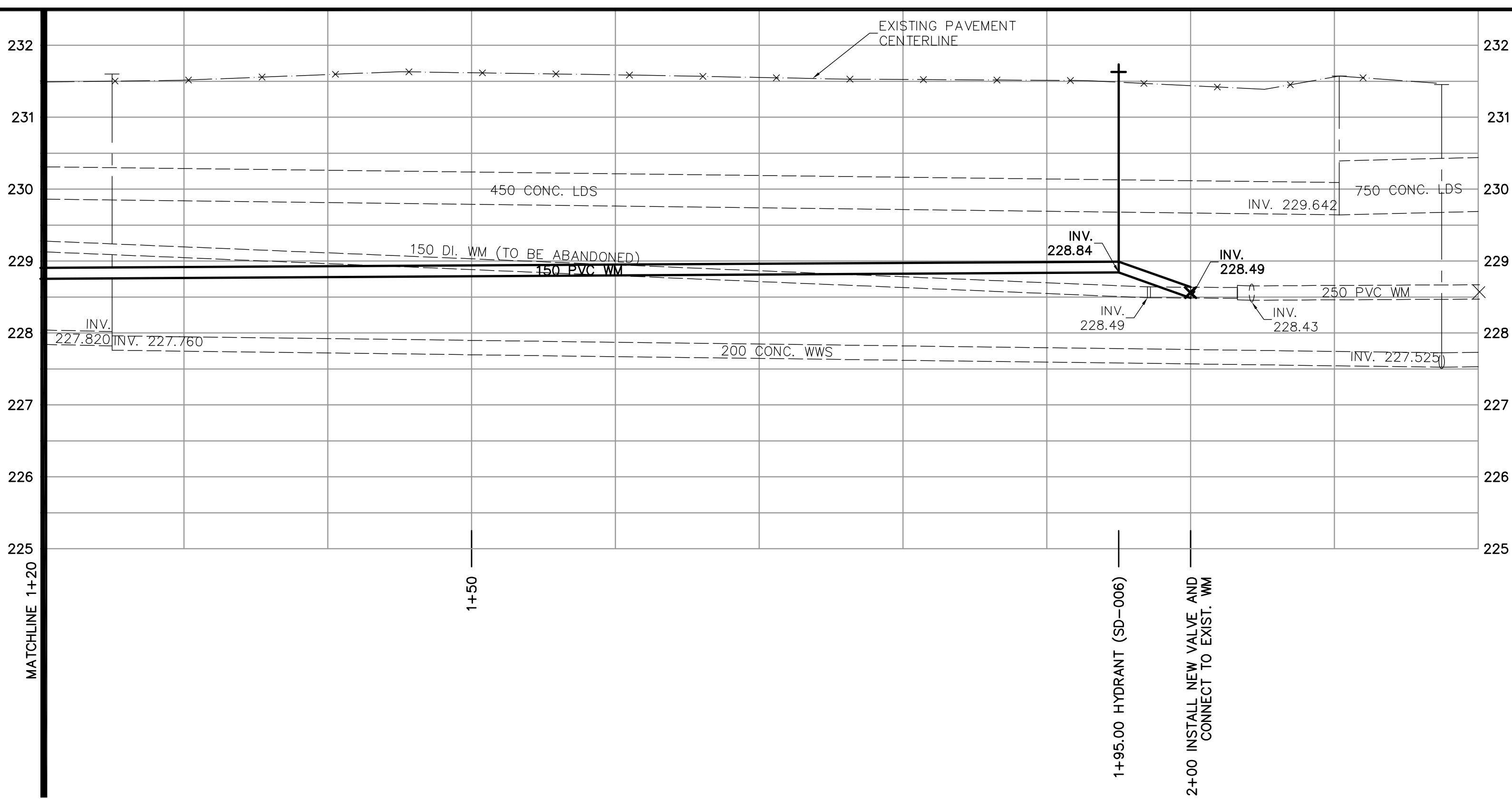
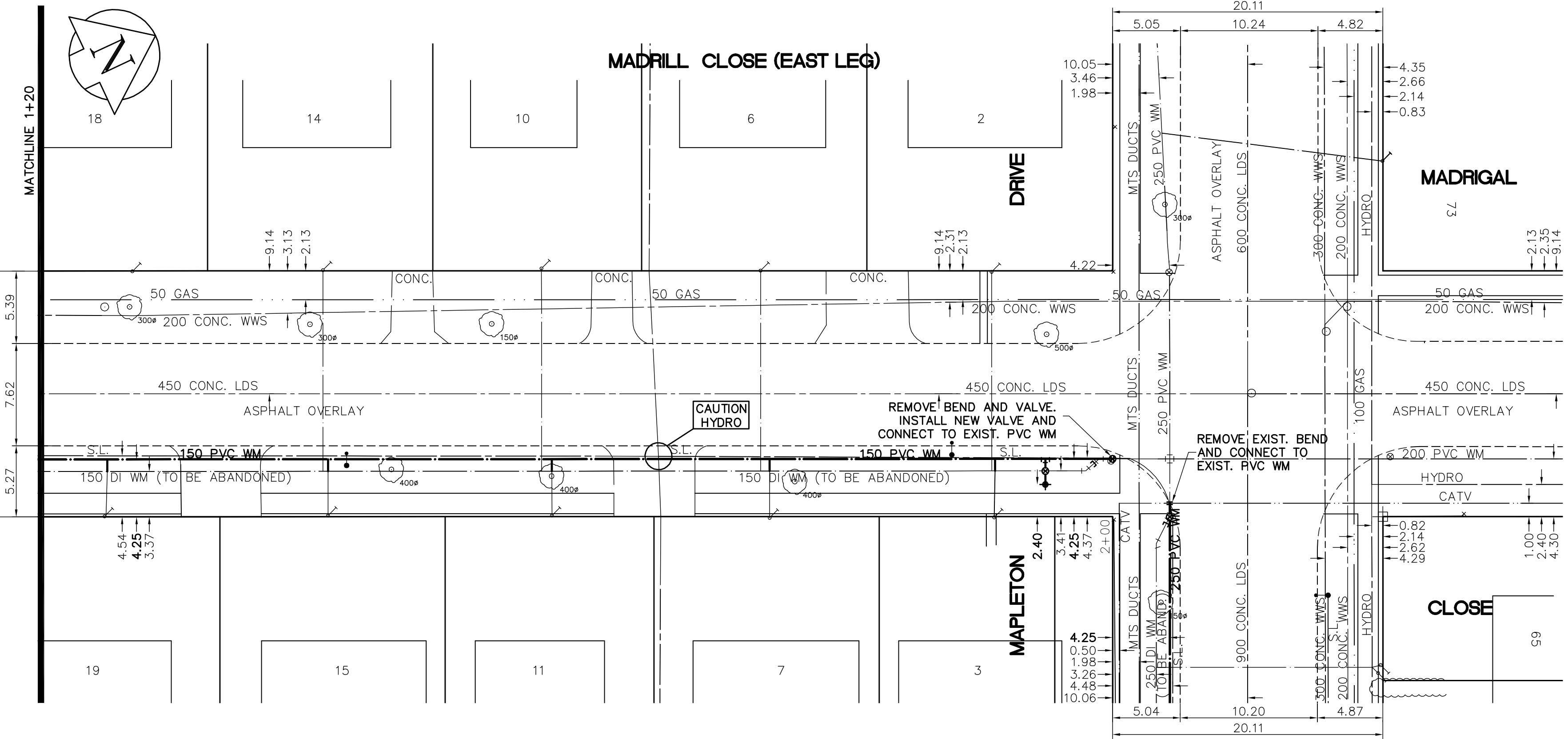


SHEET: COW-WMD-A1 (11/2002) FILE NAME: L:\work\10000\W2736\02a-cad\Map\wmd\W2736-c19.dwg LAYOUT NAME: 92736-c19 Jun 16, 2006 - 4:47pm PLOTTED BY: michael.roberts



- CONSTRUCTION NOTES**
1. EXPOSE WATERMAIN CONNECTIONS AND CONFIRM INVERTS PRIOR TO CONSTRUCTION.
 2. INSTALL WATERMAIN BY TRENCHLESS METHODS.
 3. ALL MATERIALS SHALL CONFORM TO THE CITY OF WINNIPEG STANDARD CONSTRUCTION SPECIFICATIONS.
 4. MINIMUM COVER TO TOP OF PROPOSED WATERMAIN SHALL BE 2.5m FROM STREET CENTERLINE.
 5. INSTALL ALL HYDRANTS WITH FLANGE ELEVATION 50mm- 150mm ABOVE FINISHED GRADE.
 6. REPLACE ALL EXISTING LEAD SERVICES FROM THE PROPOSED WATERMAIN TO PROPERTY LINE.
 7. NOTIFY ALL AFFECTED RESIDENTS AND BUSINESSES 24 HOURS IN ADVANCE OF ANY WATER SHUTDOWN OR DISRUPTION OF SERVICE.
 8. LOCATION OF WATER SERVICES SHOWN ON DRAWINGS ARE APPROXIMATE. THE CONTRACTOR SHALL FIELD LOCATE ALL WATER SERVICES PRIOR TO CONSTRUCTION.
 9. ALL VALVES SHALL BE BLACK TOP (CLOCKWISE TO CLOSE).
 10. BACKFILL UNDER OR WITHIN 1.0m OF PAVEMENTS, INCLUDING SIDEWALKS SHALL BE CLASS 3 BACKFILL EXCEPT AS NOTED. BACKFILL IN BOULEVARDS SHALL BE CLASS 5 BACKFILL.
 11. CHAINAGE MEASURED ALONG EAST PROPERTY LINE.



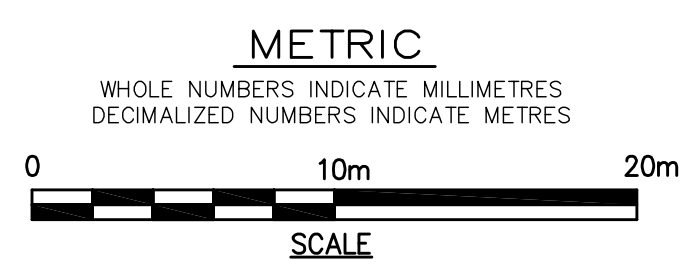
SEE DRAWING D-9046

SEE DRAWING D-9048

ADDRESS	NATURE OF SERVICE	SIZE	MATERIAL	DISTANCE SC TO PROPERTY	POSITION OF SC (curb stop)	POSITION OF CC (corp)	COMMENTS:
2 MADRILL CL	RESIDENTIAL	19 mm	COPPER	0.3 m	Long: 9.1 m S of SL MAPLETON Short: 5.5 m S of NL BLDG	Long: of SL Short: of S/C	
3 MADRILL CL	RESIDENTIAL	19 mm	COPPER	0.2 m	Long: 8.5 m S of SL MAPLETON Short: 4.9 m S of NL BLDG	Long: of SL Short: of S/C	
6 MADRILL CL	RESIDENTIAL	19 mm	COPPER	0.0 m	Long: 26.3 m S of SL MAPLETON Short: 4.9 m S of NL BLDG	Long: of SL Short: of S/C	
7 MADRILL CL	RESIDENTIAL	19 mm	COPPER	0.2 m	Long: 25.9 m S of SL MAPLETON Short: 5.2 m N of SL BLDG	Long: of SL Short: of S/C	
10 MADRILL CL	RESIDENTIAL	19 mm	COPPER	0.0 m	Long: 42.9 m S of SL MAPLETON Short: 2.8 m S of NL BLDG	Long: of SL Short: of S/C	

ADDRESS	NATURE OF SERVICE	SIZE	MATERIAL	DISTANCE SC TO PROPERTY	POSITION OF SC (curb stop)	POSITION OF CC (corp)	COMMENTS:
11 MADRILL CL	RESIDENTIAL	19 mm	COPPER	0.3 m	Long: 41.9 m S of SL MAPLETON Short: 3.8 m S of NL BLDG	Long: of SL Short: of S/C	
14 MADRILL CL	RESIDENTIAL	19 mm	COPPER	0.1 m	Long: 31.2 m N of SL MAPLETON Short: 5.1 m S of NL BLDG	Long: of SL Short: of S/C	
15 MADRILL CL	RESIDENTIAL	19 mm	COPPER	0.2 m	Long: 31.2 m N of SL MAPLETON Short: 5.0 m N of SL BLDG	Long: of SL Short: of S/C	
18 MADRILL CL	RESIDENTIAL	19 mm	COPPER	0.0 m	Long: 16.9 m N of SL MAPLETON Short: 3.1 m S of NL BLDG	Long: of SL Short: of S/C	
19 MADRILL CL	RESIDENTIAL	19 mm	COPPER	0.2 m	Long: 14.4 m N of SL MAPLETON Short: 5.2 m S of NL BLDG	Long: of SL Short: of S/C	

APEGM
 Certificate of Authorization
 Earth Tech Canada Inc.
 No. 730 Expiry: April 30, 2007



EXISTING	LEGEND - PLAN	PROPOSED	EXISTING	LEGEND - PROFILE	PROPOSED	EXISTING	LEGEND - PROFILE	PROPOSED
150 mm W.M.	WATERMAIN	150 mm W.M.	Hydro	HYDRANT	Hydro	300mm L.D.S.	LAND DRAINAGE SEWER	300mm L.D.S.
300mm L.D.S.	LAND DRAINAGE SEWER	300mm L.D.S.	ASPHALT	PROPERTY LINE	ASPHALT	250mm W.W.S.	WASTE WATER SEWER	250mm W.W.S.
250mm W.W.S.	WASTE WATER SEWER	250mm W.W.S.	SURVEY BAR	CURB STOP	SURVEY BAR			
	MANHOLE		TREE	ANODE	TREE			
	CATCH BASIN		CONCRETE SIDEWALK	FENCE	CONCRETE SIDEWALK			
	CURB INLET							
	JUNCTIONS							
	CULVERT							
	GAS							

LOCATION APPROVED UNDERGROUND STRUCTURES

SUPV. U/G STRUCTURES COMMITTEE DATE

NOTE:
 LOCATION OF UNDERGROUND STRUCTURES AS SHOWN ARE BASED ON THE BEST INFORMATION AVAILABLE. BUT NO GUARANTEE IS GIVEN THAT ALL EXISTING UTILITIES ARE SHOWN OR THAT THE GIVEN LOCATIONS ARE EXACT. CONFIRMATION OF EXISTENCE AND EXACT LOCATION OF ALL SERVICES MUST BE OBTAINED FROM THE INDIVIDUAL UTILITIES BEFORE PROCEEDING WITH CONSTRUCTION.

B.M. 15-063 Sheppard St. & Mapleton Dr., 10ft. on top of 0.05m sq. x 2.4m iron tube, 18.3m W. of E.L. of Sheppard St. & 14.9m S. of the N.L. Mapleton Dr.

NO.	ISSUED FOR	DATE	BY
0	ISSUED FOR TENDER	16/06/2004	GSK
A	ISSUED FOR REVIEW	14/06/2006	GSK

EARTH TECH
 A tyco INTERNATIONAL LTD. COMPANY
 Earth Tech (Canada) Inc. Winnipeg, Manitoba 204.477.5381

DESIGNED BY: GDL, GSK
 CHECKED BY: GSK

DRAWN BY: MAF
 APPROVED BY: KWF

HOR. SCALE: 1:250
 VERTICAL SCALE: 1:50

RELEASED FOR CONSTRUCTION BY: K. ZUREK
 DATE: 19/06/2006

ENGINEER'S SEAL
 PROVINCE OF MANITOBA
 ORIGINAL SIGNED BY
K.W. FITCHETT
 16/06/2006
 REGISTERED PROFESSIONAL ENGINEER

THE CITY OF WINNIPEG
 Winnipeg WATER AND WASTE DEPARTMENT

2006 WATERMAIN RENEWALS CONTRACT 19

MADRILL CLOSE EAST LEG
 STA. 1+20 TO MAPLETON DRIVE

SHEET 11 OF 14
 CITY DRAWING NUMBER D-9047

CONSULTANT DRAWING NO. 92736-C19