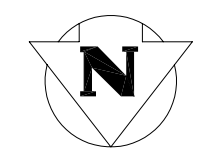


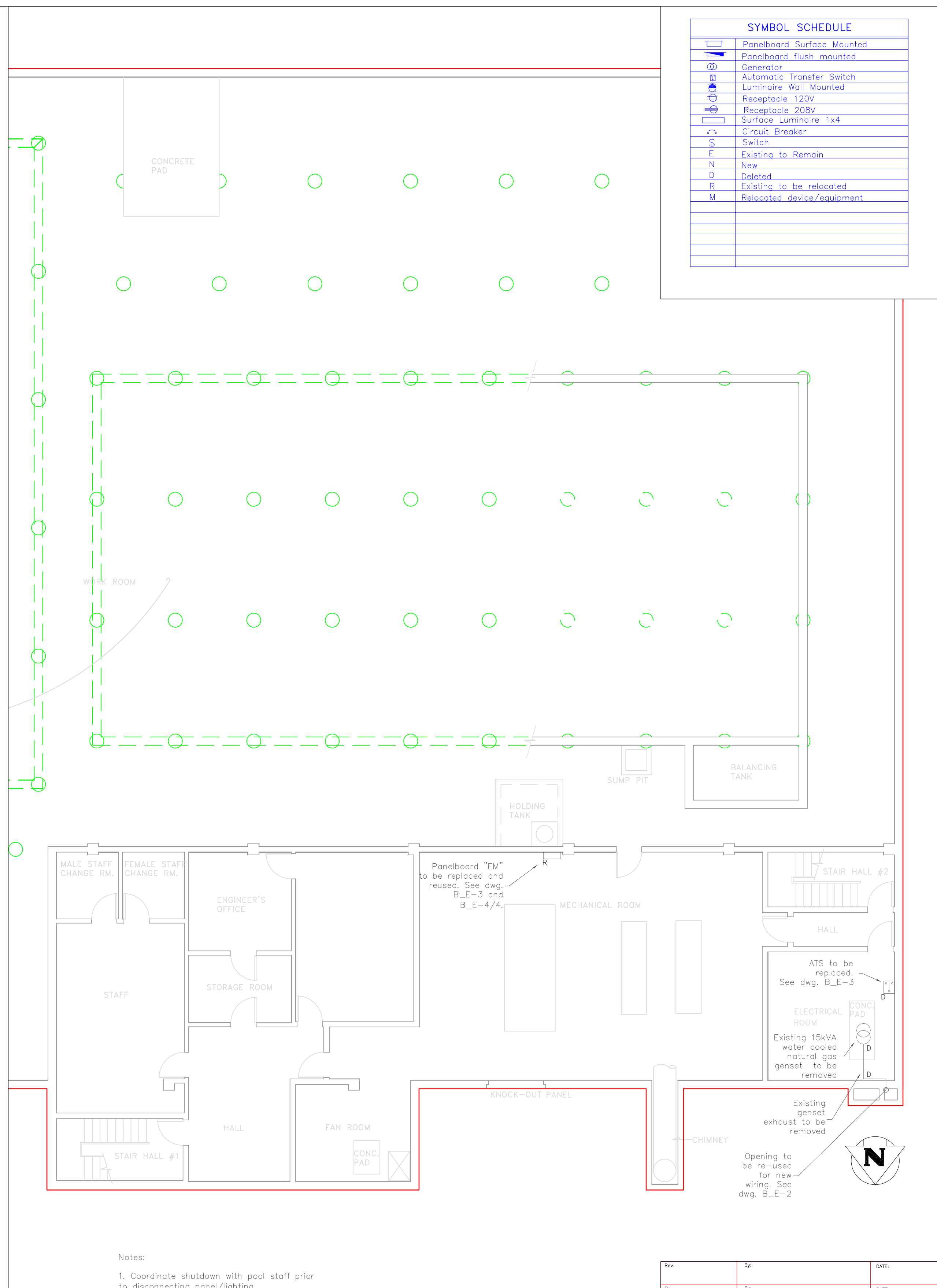
Emergency light in the pool area to be replaced. Typical for 11 lights. See dwg. B_E-2 for details.



- DESCRIPTION OF WORK**
- The Contractor will be responsible for coordinating the delivery of materials to site, unloading the materials at site, and arranging the storage and insurance of such materials upon arrival.
 - Supply and install new weatherproof enclosed generator set to replace old one. Generator/enclosure to be installed externally as indicated on dwg. B_E-2.
 - Supply and install fence to protect generator set.
 - Supply and install emergency panel to replace existing two. One existing panel to be deleted, the other to be re-used.
 - Provide UPS and connect to emergency panelboard "EM" to feed pool lights.
 - Supply and install new genset ccls from normal power and rewire non-emergency circuits to normal power.

- Notes:**
- Coordinate shutdown with pool staff prior to disconnecting panel/lighting.
 - Patch and paint walls/floor to match existing where equipment has been removed/replaced.
 - Patch and seal both sides of walls/floor where existing wiring/conduit/piping have been removed.
 - Contractor to check with owner prior to disposal of removed equipment.
 - Wiring to be reused where possible.

1 Demolition Plan Main Floor
E-1 SCALE: 1:100



Panelboard "EM" to be replaced and reused. See dwg. B_E-3 and B_E-4/4.

Existing genset exhaust to be removed
 Opening to be re-used for new wiring. See dwg. B_E-2

- Notes:**
- Coordinate shutdown with pool staff prior to disconnecting panel/lighting.
 - All existing wiring and conduit associated with equipment being deleted to be removed back to source.
 - Natural gas and water lines to be removed to source.
 - Patch and paint walls/floor to match existing where equipment has been removed/replaced.
 - Patch and seal both sides of walls/floor where existing wiring/conduit/piping have been removed.

2 Demolition Plan Basement
E-1 SCALE: 1:100

SYMBOL SCHEDULE	
[Symbol]	Panelboard Surface Mounted
[Symbol]	Panelboard Flush Mounted
[Symbol]	Generator
[Symbol]	Automatic Transfer Switch
[Symbol]	Receptacle 120V
[Symbol]	Receptacle 208V
[Symbol]	Surface Luminaire 1x4
[Symbol]	Switch
[Symbol]	Circuit Breaker
E	Existing to Remain
N	New
D	Deleted
R	Existing to be Relocated
M	Relocated device/equipment

Rev.	By:	DATE:

THE CITY OF WINNIPEG
 PUBLIC WORKS DEPARTMENT
 BUILDING SERVICES DIVISION
 100 MAIN STREET, MAIN FLOOR
 WINNIPEG, MB. R3C 1A4
 (204) 986-7266

Winnipeg

PROJECT: Emergency System Upgrade
 Bonivital Pool, 1215 Archibald St.

SHEET TITLE: Demolition

ENG. STAMP: PROVINCE OF MANITOBA REGISTERED PROFESSIONAL ENGINEER
G.W. ALCOCK
 30-06-2006

PROJECT NO: 404-2006
 DRAWN BY: VC
 CHECKED BY: GWA
 APPROVED BY: GWA
 SCALE: 1:100
 DATE: 30 June, 2006
 DWG. NO: B_E-1
 REV: 0