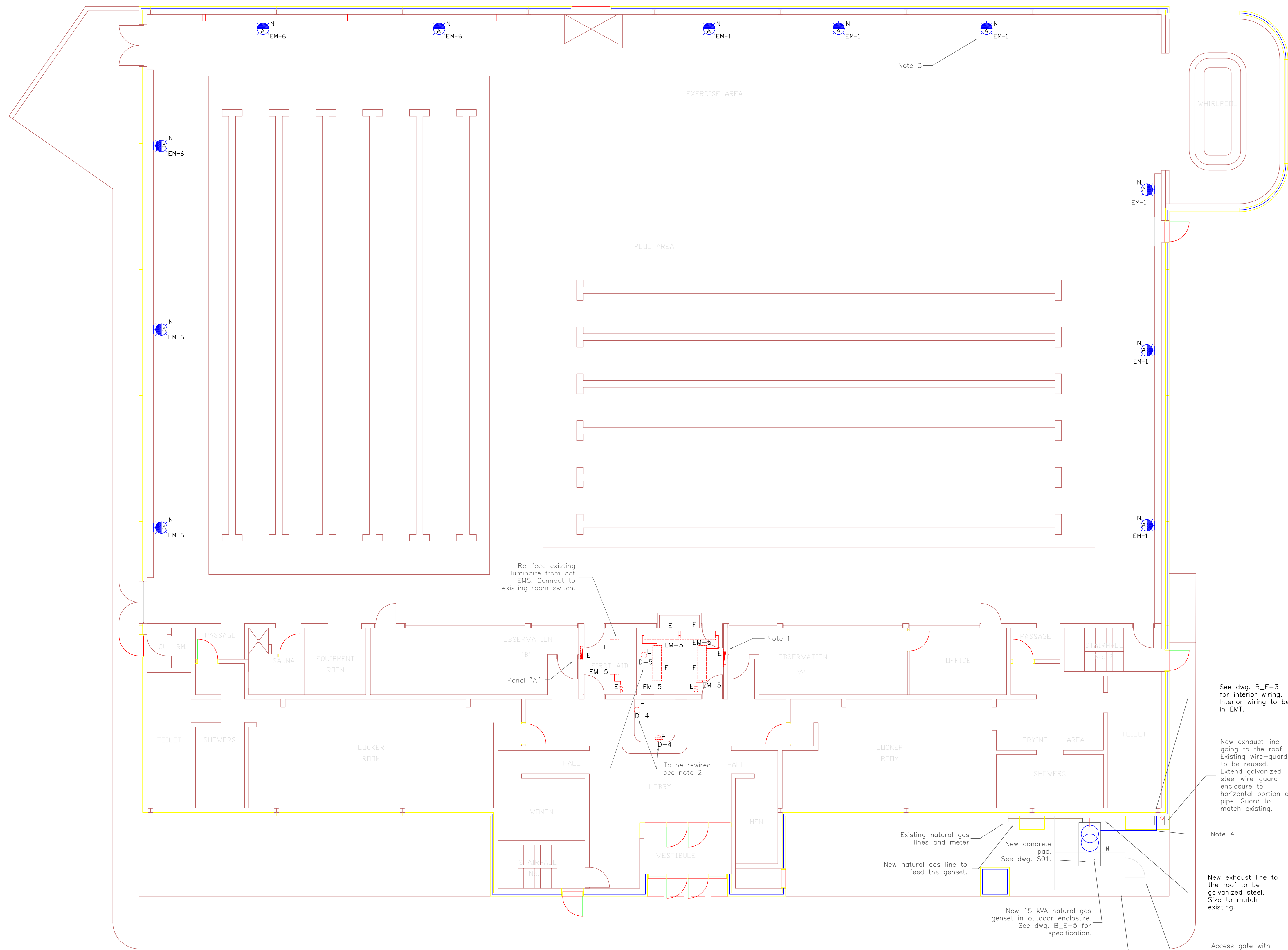
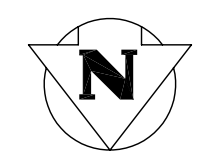


SYMBOL SCHEDULE	
	Panelboard Surface Mounted
	Panelboard flush mounted
	Generator
	Automatic Transfer Switch
	Luminaire Wall Mounted
	Receptacle 120V
	Receptacle 208V
	Surface Luminaire 1x4
	Circuit Breaker
	Switch
	E Existing to Remain
	N New
	D Deleted
	R Existing to be relocated
	M Relocated device/equipment



- Notes:
- Existing Panelboard "E" to be reused as a splice box to extend emergency ccts to new Panelboard "EM" (see dwg. B\_E-3 for location). Provide barrier inside splice box to separate emergency ccts from normal ccts (fed from Panelboard "D" - see dwg. B\_E-3). Reuse existing conduits at the bottom of splice box to route normal and emergency ccts down to basement. Extend wiring/conduit as required.
  - 3 ccts from existing Panelboard "E" to be transferred to reused Panelboard "D". ( See dwg. B\_E-3) The 3 ccts to be rewired as 2 ccts ( D-4, D-5) as indicated.
  - Emergency lighting to be Cooperlight wall mount luminaire, PLIP-S-42-120, or approved equal. See dwg. B\_E-4/3.
  - Refer to underground trench detail B\_E-4/5 for wiring to/from genset enclosure.



Re-feed existing luminaire from cct EMS. Connect to existing room switch.

Note 1

To be rewired, see note 2

See dwg. B\_E-3 for interior wiring. Interior wiring to be in EMT.

New exhaust line going to the roof. Existing wire-guard to be reused. Extend galvanized steel wire-guard enclosure to horizontal portion of pipe. Guard to match existing.

Note 4

New exhaust line to the roof to be galvanized steel. Size to match existing.

Existing natural gas lines and meter

New concrete pad. See dwg. S01.

New natural gas line to feed the genset.

New 15 kVA natural gas genset in outdoor enclosure. See dwg. B\_E-5 for specification.

New non-climbable chain link fence surrounding East, West, North and top of the generator set. The minimum clearance between the fence and the enclosure shall be 1.1m. Posts, five (5) top rails and fence shall be made of galvanized steel. Height of fence and posts shall be 2440mm. Other details as per City Standard Construction Specification CW3550.

Access gate with non-climbable chain link fence. Gate as per City Standard Construction specification CW 3550. Gate to be lockable. Provide 3 sets of keys.

REV.	BY:	DATE:
<p><b>THE CITY OF WINNIPEG</b> PUBLIC WORKS DEPARTMENT BUILDING SERVICES DIVISION 100 MAIN STREET, MAIN FLOOR WPG, MB. R3C 1A4 (204) 986-7266</p>		
PROJECT: Emergency System Upgrade Bonivital Pool, 1215 Archibald St.		
SHEET TITLE: Main floor Plan, Electrical&Lighting		
ENCL. STAMP:	PROJECT NO. 404-2006	APPROVED BY: GWA
	DRAWN BY: VC	CHECKED BY: GWA
	SCALE: 1:100	DATE: 30 Jun 2006
DWG. NO. B_E-2	REV. 0	