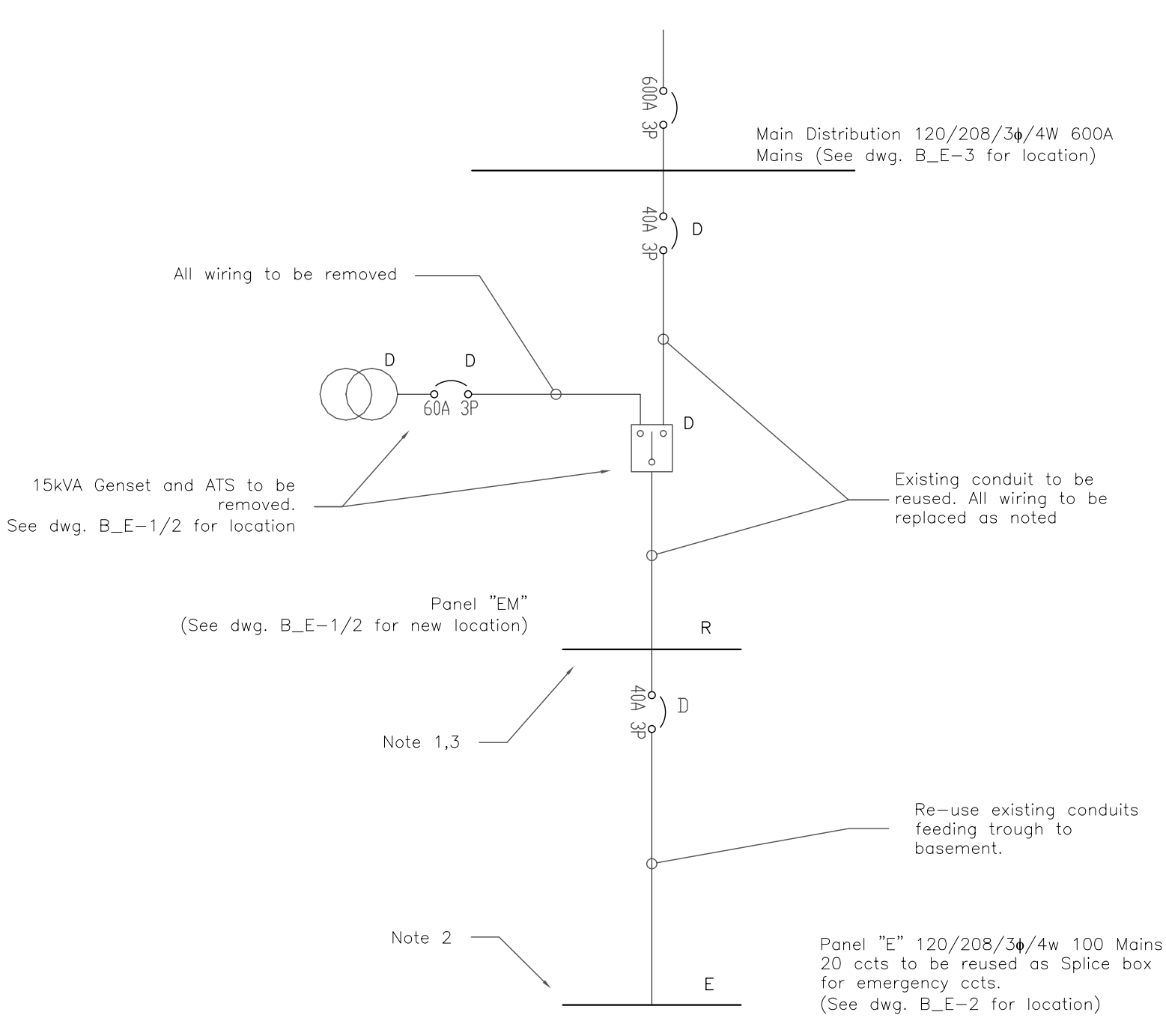
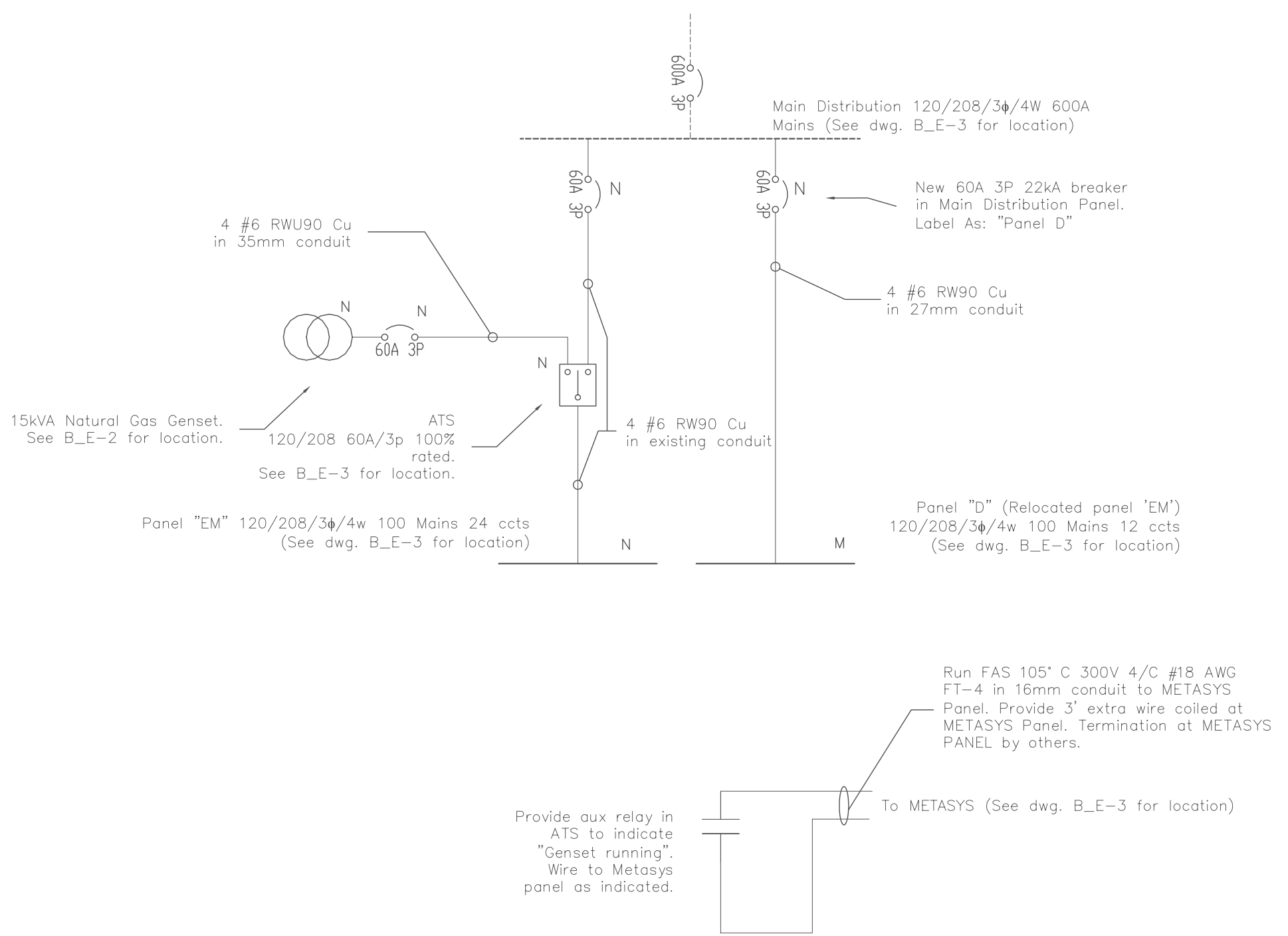


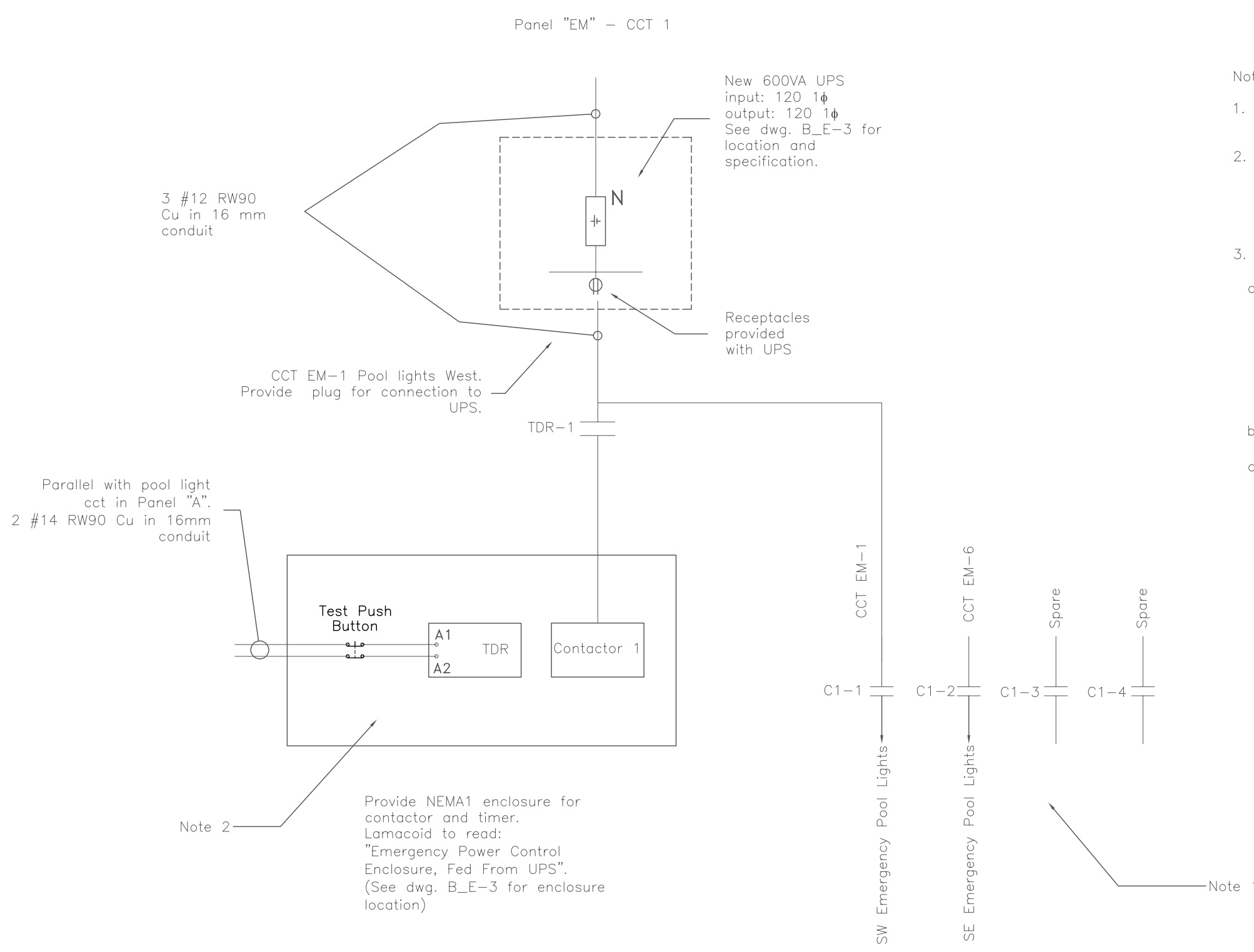
SYMBOL SCHEDULE	
	Panelboard Surface Mounted
	Panelboard flush mounted
	Generator
	Automatic Transfer Switch
	Luminaire Wall Mounted
	Receptacle 120V
	Receptacle 208V
	Surface Luminaire 1x4
	Circuit Breaker
	Switch
	Existing to Remain
	New
	Deleted
	Existing to be relocated
	Relocated device/equipment



1 Existing Partial Single Line  
E-4 SCALE: N.T.S.



2 New Partial Single Line  
E-4 SCALE: N.T.S.



3 Pool Emergency Lights Power Supply  
E-4 SCALE: N.T.S.

New Emergency Panel EM 120/208/3φ/4w 100A Mains 18kA												
Note 1	Description	CCT	Pwr. (W)	Brk. A	A	B	C	Brk. A	Pwr. (W)	CCT	Description	Note 1
E-4 (Note 2)	Pool emergency lights West Side	1	350	15				15	20	13	Emergency water make-up for boilers	EM-4A
E-2	Women's changeroom/shower emergency lights	2	250	15				15	1250	14	Condensate pump "P2"	EM-6
E-5	Men's showers and stairs emergency lights	3	290	15				15	1250	15	Condensate pump "P3"	EM-11
E-6	Lobby and observation rooms emergency lights	4	290	15				15	1020	16	Compressor "P9"	EM-12
E-8	Lifeguard and first aid room emergency lights	5	240	15				15	110	17	Power supply boiler 1	EM-8
E-1 (Note 2)	Pool emergency lights East Side	6	250	15				15	110	18	Power supply boiler 2	EM-7
E-12	Chlorine room exhaust fan "F5"	7	270	15				15	160	19	METASYS	EM-5A
E-3	Exit lights	8	60	15				15-2p	750	20	Air intake fan in electrical room "F11"	EM-9/10
E-11	Power supply-relay transformer & Clock south pool wall	9	40	15				15	750	21		
EM-4B	Basement emergency lights	10	290	15				15		22	Spare	
E-10	Power supply pneumatic panel	11	150	15				15		23	Spare	
	Spare	12		15				15		24	Spare	

Power (W)					
A	2400	B	2810	C	2590

Panel D (Relocated panel "EM") 120/208/3φ/4w 100A Mains												
Note 1	Description	CCT	Pwr. (W)	Brk. A	A	B	C	Brk. A	Pwr. (W)	CCT	Description	Note 1
E-15/16/17	Test Receptacle 208V	1	1800	30-3p				15	500	7	Genset space heater	NEW
		2	1800					15	1100	8	Genset receptacles and Motor dampers	NEW
		3	1800					15-2p	1100	9	Test Receptacle 208V	E-18/19
E-14	Receptacles lobby front desk	4	500	15				20	0	11	Spare	
E-7	Photocopier receptacle lifeguard room	5	950	15				20	0	12	Spare	
NEW	Genset block heater	6	1100	15								

Power (W)					
A	3900	B	3850	C	2900

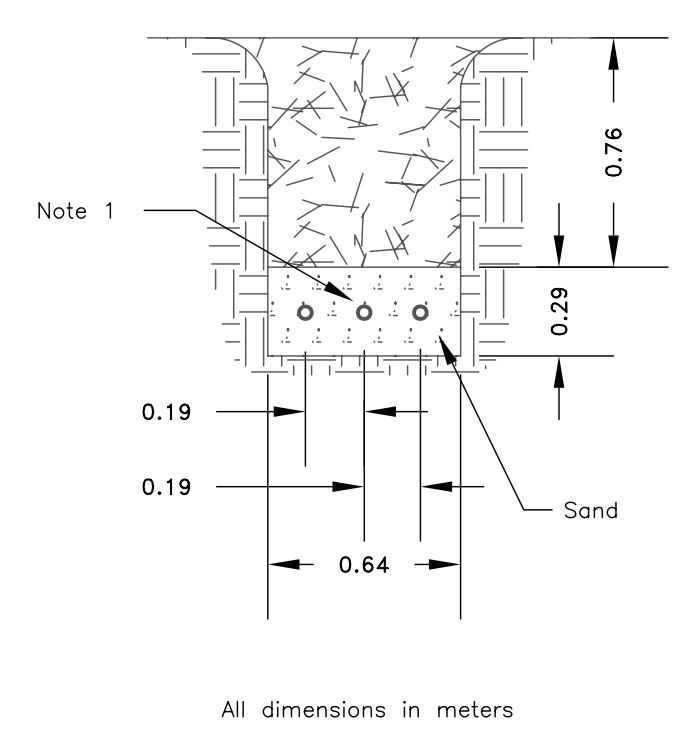
4 Panelboard Schedule  
E-4 SCALE: N.T.S.

Note:

- Designation denotes existing panel/cct that cct has been transferred from. Panel locations shown on dwg. B\_E-3.
- See dwg. B\_E-4/3.

Note 1:

- 27mm PVC conduit and 3 ccts from panel "D" to Genset for block heater, space heater and receptacles. Wiring to be #12 RW90 Cu.
- 35mm PVC conduit with 4#6 RWU 90 Cu for emergency power from generator.
- 16mm PVC conduit with 2#12 RWU 90 Cu from ATS to generator control panel (Generator start signal).



5 Trench Detail  
E-4 SCALE: N.T.S.

Rev.	By:	DATE:
Rev.	By:	DATE:
Rev.	By:	DATE:

**THE CITY OF WINNIPEG**  
PUBLIC WORKS DEPARTMENT  
BUILDING SERVICES DIVISION  
100 MAIN STREET, MAIN FLOOR  
WPG, MB. R3C 1A4  
(204) 986-7266

PROJECT: **Emergency System Upgrade**  
Bonivital Pool, 1215 Archibald St.

SHEET TITLE: **Details**

ENG. STAMP	PROJECT NO.
	404-2006
DRAWN BY:	CHECKED BY:
VC	GWA
APPROVED BY:	GWA
SCALE:	DATE:
	30 Jun 2006
DWG. NO.	REV.
B_E-4	0