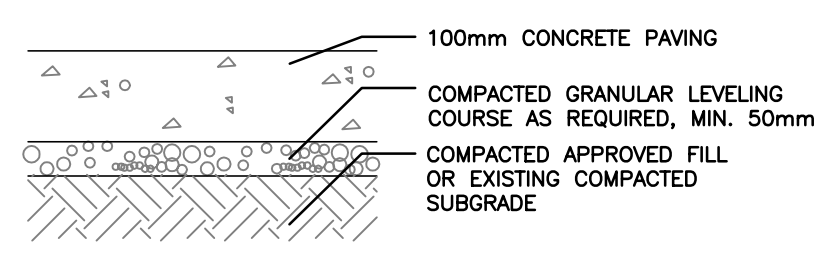
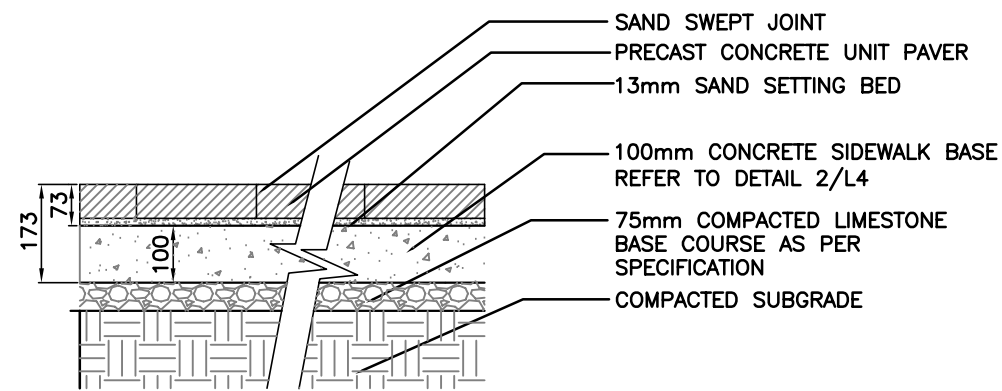


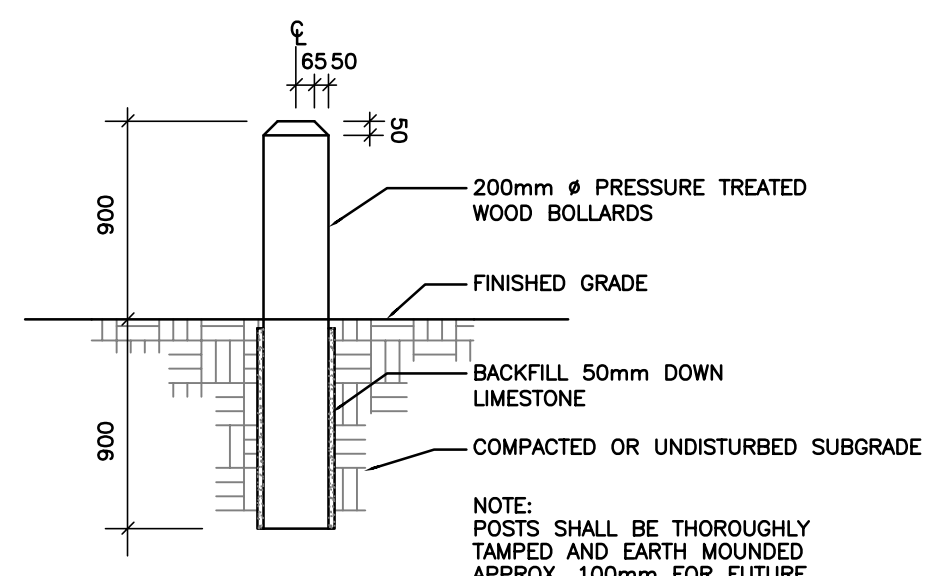
**1 CRUSHED LIMESTONE PATHWAY**  
L2 N.T.S.



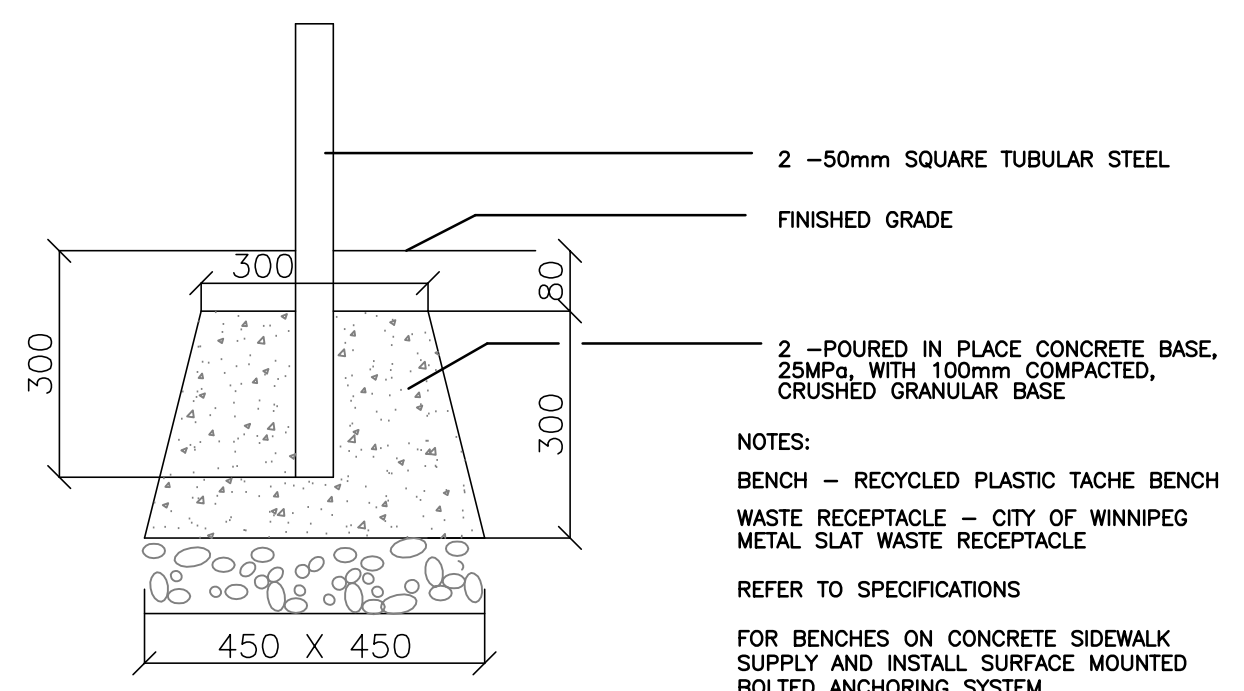
**2 CONCRETE SIDEWALK**  
L2 N.T.S.



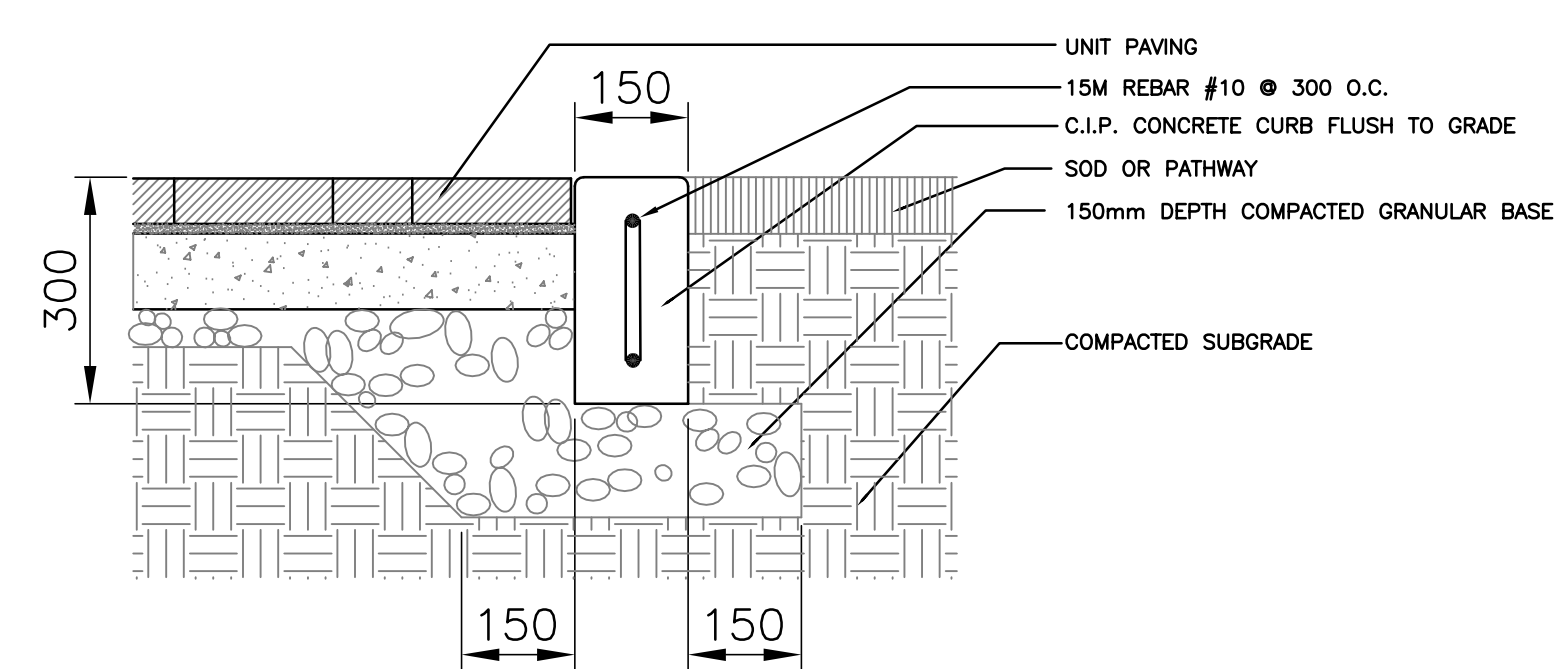
**3 UNIT PAVERS ON CONCRETE BASE**  
L2 N.T.S.



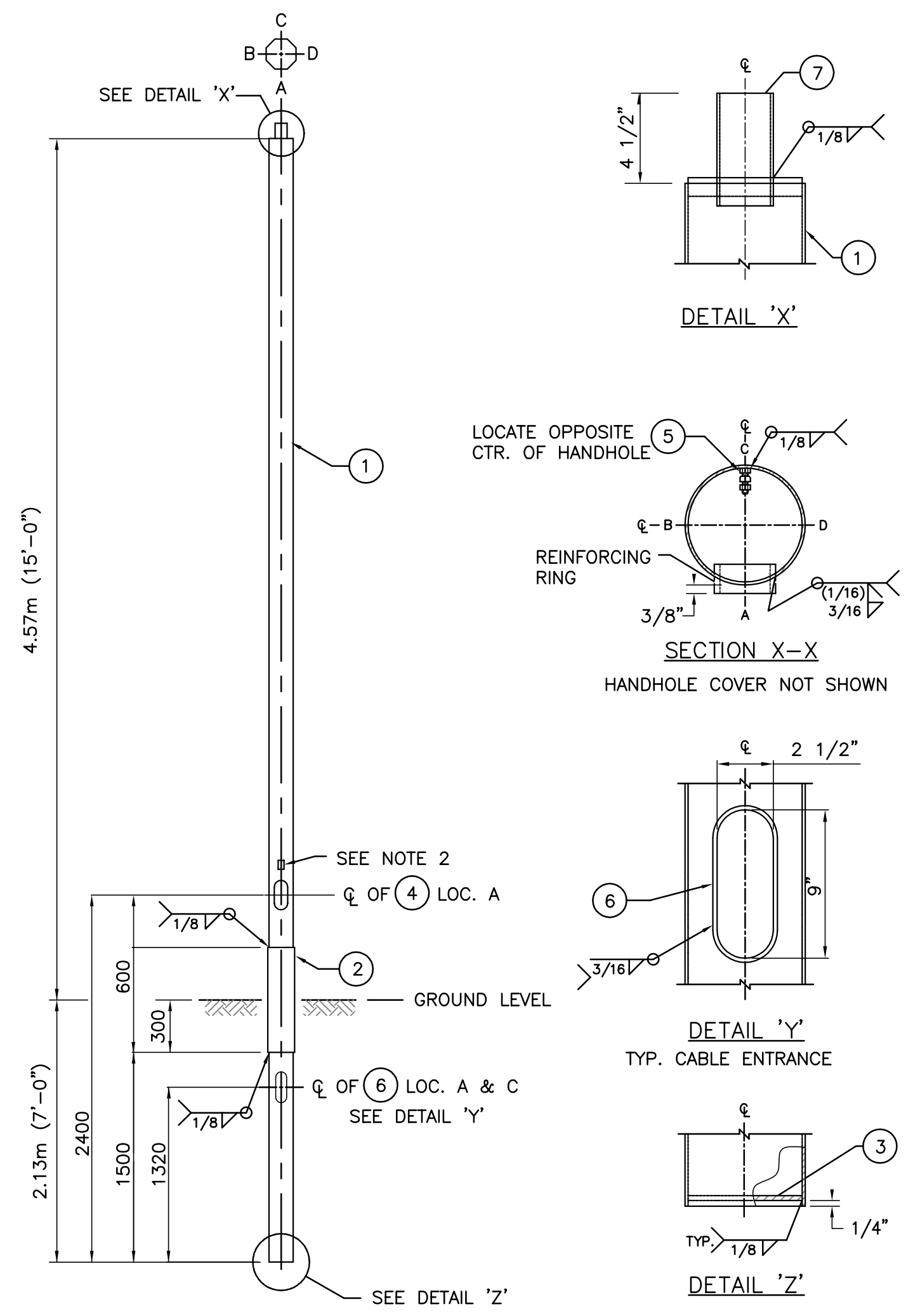
**4 WOOD BOLLARD**  
L2 N.T.S.



**5 CONCRETE FOOTING FOR BENCHES AND WASTE RECEPTACLES**  
L2 N.T.S.



**6 CONCRETE LANDSCAPE CURB**  
L2 N.T.S.

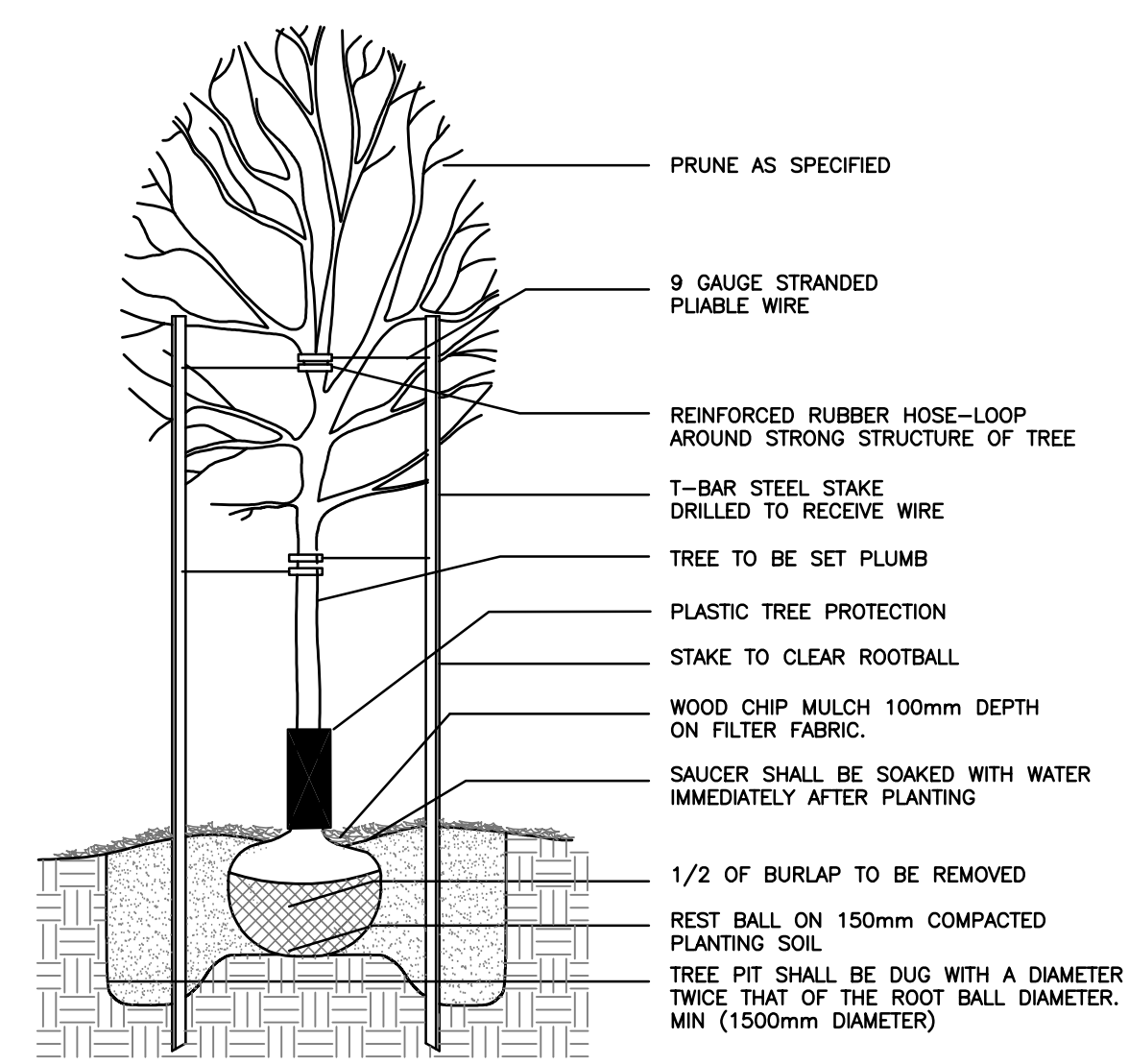


POST MOUNTED LUMINAIRE, P.E.C. - SDL  
VP80-240V-150 S C/W 150W HPS LAMP AND 8  
GUARDS, POWDER COATED, COLOR BLACK, C/W  
MATCHING TENON. REFER TO ELECTRICAL PLANS  
E1, E2.

ITEM No.	QTY	DESCRIPTION	MATERIAL	DWG. No.
1	1	5" ROUND SHAFT	HSS 5" OD.	
2	1	5" INSIDE DIAMETER GROUND SLEEVE	HSS 5" ID	
3	1	BEARING PLATE 2 3/4" x 4 13/16"	7GA A570 GR.50	
4	1	4 x 7 HANDHOLE C/W COVER	C/W 1 1/2" WIDE x 1/4" REINFORCING RING	
5	1	GROUND BOLT ASS'Y. 3/8"-16UNC x 1"LG.	C/W NUT - STEEL FLATED & ALUMINUM TERMINAL WASHER	
6	2	REINFORCING RING 1" x 21 7/16" DEV. LG.	7GA A570 GR. 50	
7	1	PIPE TENON 2" I.P.S.(2 3/8"O.D.) x 6"LG.	A53 GR.B SCH.40	

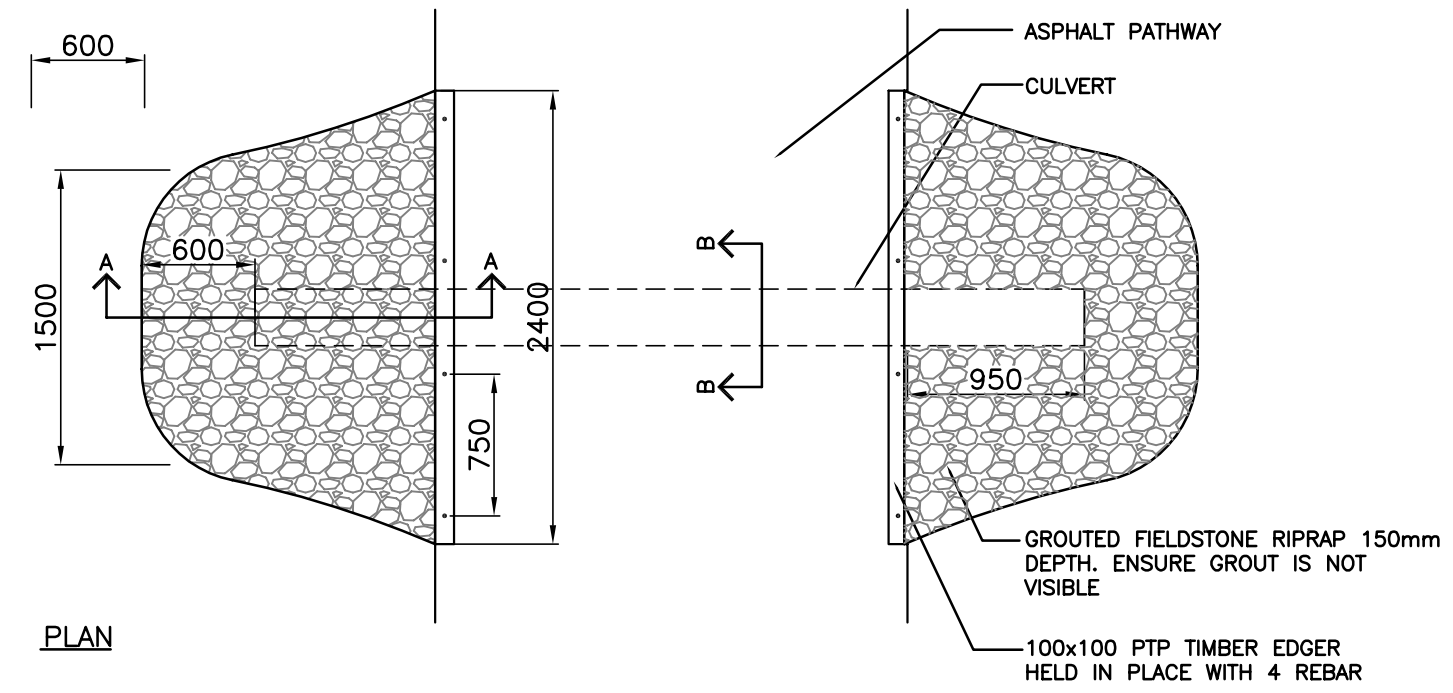
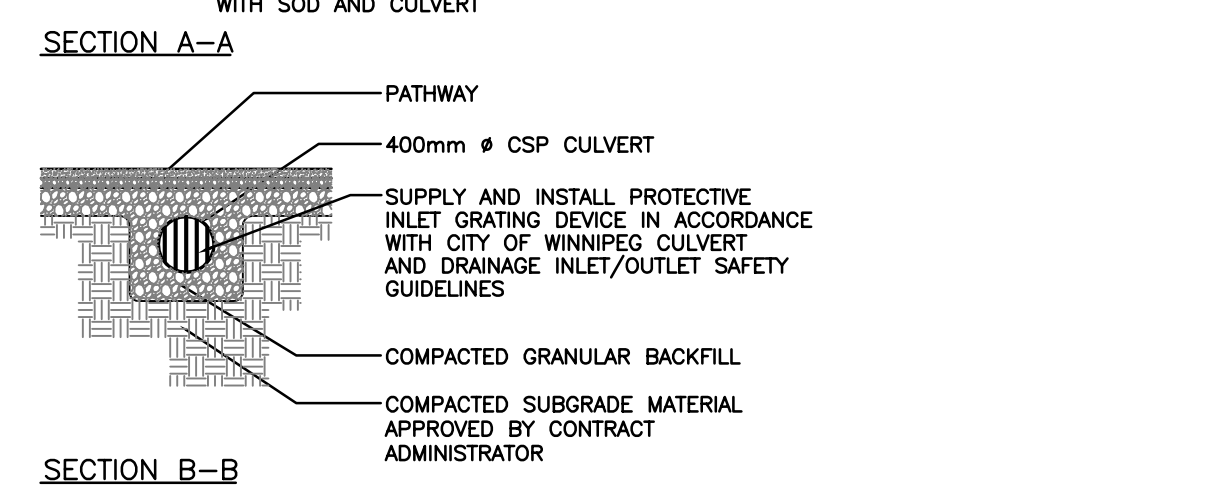
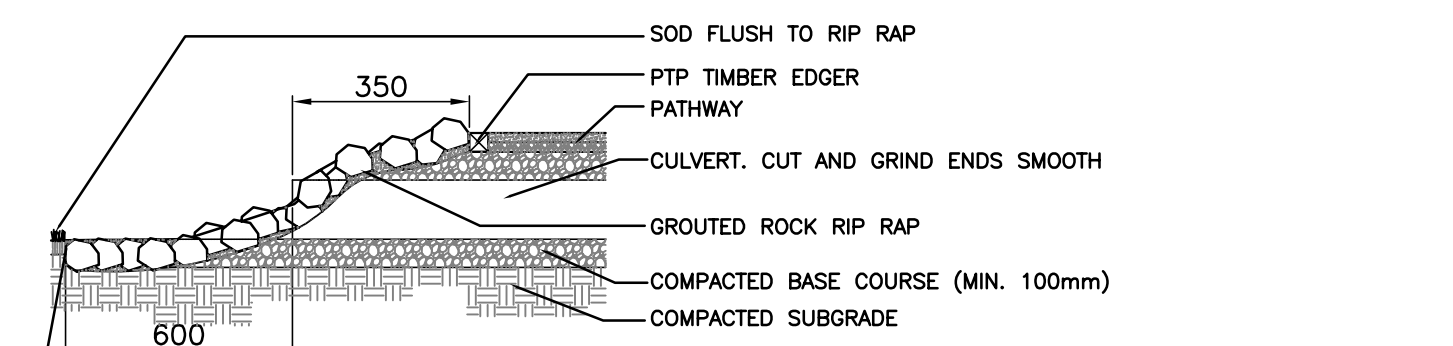
**FINISH:** POWDER COAT, COLOR BLACK  
**NOTES:**  
1. ALL WELDING SHALL CONFORM TO C.S.A. STANDARD W59 AND SHALL BE PERFORMED BY WELDERS AND WELDING OPERATORS QUALIFIED UNDER C.S.A. STANDARD W47.1  
2. C.S.A. & IDENTIFICATION STICKER.  
3. REFER TO ELECTRICAL PLANS (E1 + E2) AND SPECIFICATION FOR FIXTURE SCHEDULE

**8 PEDESTRIAN LIGHT POLE**  
L2 N.T.S.

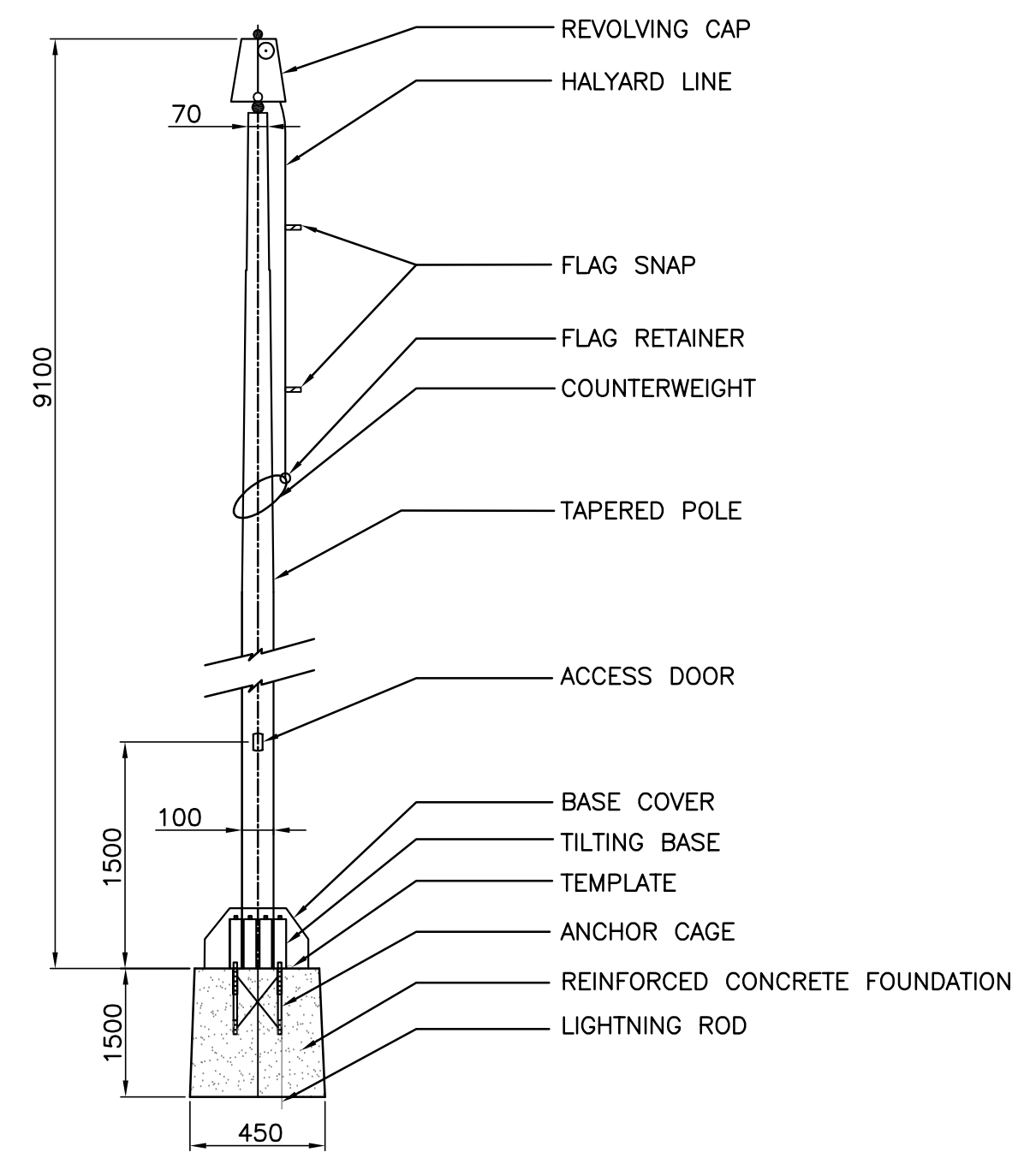


**7 TYPICAL DECIDUOUS TREE PLANTING**  
L2 N.T.S.

NOTE: -CONTRACTOR SHALL ALLOW FOR SOIL SETTLEMENT



**9 400mm CULVERT**  
L2 N.T.S.



**10 FLAG POLE**  
L1 N.T.S.

No.	Revisions	Date	By
0	ISSUED FOR TENDER	JUN 22/06	AH
0	ISSUED FOR REVIEW	JUN 14/06	AH

Date: 12-06-06 Scale: AS NOTED  
Designed By: AH Drawn By: AH Checked By: SR



CITY OF WINNIPEG  
Project Title  
**SGT. TOMMY PRINCE  
MM VETERANS PARK  
PHASE 2**

Sheet Title  
**DETAILS**



Project No. 06-025 Drawing No. L4