

SEWER JUNCTION INFORMATION (MA50017922)

1ST MH WEST OF FITZPATRICK RD (MHID 50014444) TO MH AT FITZPATRICK RD (MHID 50014443)

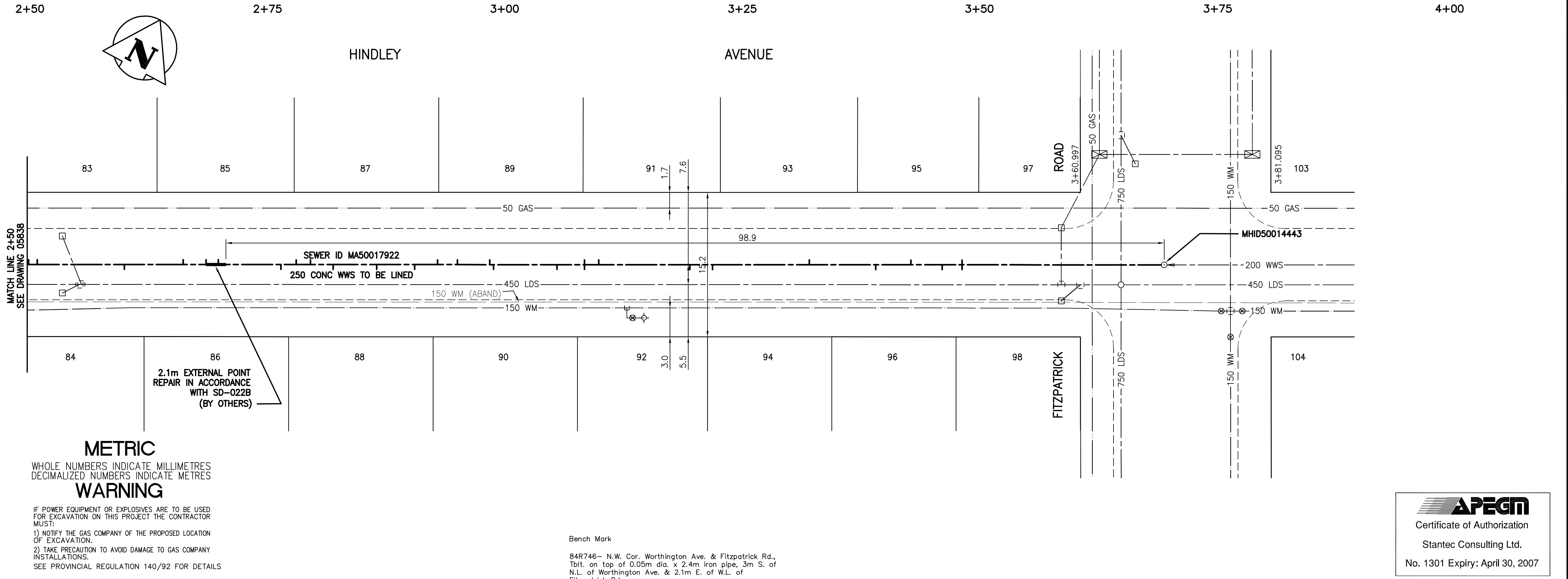
DISTANCE FROM MH AT FITZPATRICK RD (MH 50014443) *

21.3	WEST	150 MM DIA.	SOUTH	CNI	
21.3	WEST	150 MM DIA.	NORTH	JN	
23.4	WEST	150 MM DIA.	SOUTH	JN	
26.7	WEST	150 MM DIA.	NORTH	JN	
30.4	WEST	150 MM DIA.	SOUTH	JN	
37.4	WEST	150 MM DIA.	NORTH	CNI	
47.6	WEST	150 MM DIA.	SOUTH	CNI	
50.0	WEST	150 MM DIA.	SOUTH	CNI	CAPPED
59.6	WEST	150 MM DIA.	NORTH	CNI	
61.1	WEST	150 MM DIA.	SOUTH	CNI	
61.1	WEST	150 MM DIA.	NORTH	CNI	
64.0	WEST	150 MM DIA.	SOUTH	CNI	CAPPED
70.7	WEST	150 MM DIA.	SOUTH	CNI	
71.1	WEST	150 MM DIA.	NORTH	CNI	
74.5	WEST	150 MM DIA.	NORTH	CNI	
76.6	WEST	150 MM DIA.	NORTH	CNI	CAPPED
79.0	WEST	150 MM DIA.	SOUTH	CNI	CAPPED
83.0	WEST	150 MM DIA.	SOUTH	CNI	
87.6	WEST	150 MM DIA.	SOUTH	CNI	
90.0	WEST	150 MM DIA.	NORTH	CNI	
91.5	WEST	150 MM DIA.	NORTH	JN	CAPPED
93.1	WEST	150 MM DIA.	SOUTH	CNI	
99.7	WEST	150 MM DIA.	NORTH	CNI	
101.0	WEST	150 MM DIA.	NORTH	CNI	
103.4	WEST	150 MM DIA.	NORTH	JN	
109.6	WEST	150 MM DIA.	SOUTH	JN	
118.8	WEST	150 MM DIA.	NORTH	JN	
119.7	WEST	150 MM DIA.	NORTH	CNI	

* Information from Sewer Video Inspection

SEWER SERVICE INFORMATION

ADDRESS	SIZE	PROPERTY LINE LOCATION
83 HINDLEY AVE RESIDENTIAL	NO INFO AVAILABLE	NO INFO AVAILABLE
84 HINDLEY AVE RESIDENTIAL	NO INFO AVAILABLE	NO INFO AVAILABLE
85 HINDLEY AVE RESIDENTIAL	NO INFO AVAILABLE	NO INFO AVAILABLE
86 HINDLEY AVE RESIDENTIAL	NO INFO AVAILABLE	NO INFO AVAILABLE
87 HINDLEY AVE RESIDENTIAL	NO INFO AVAILABLE	NO INFO AVAILABLE
88 HINDLEY AVE RESIDENTIAL	NO INFO AVAILABLE	NO INFO AVAILABLE
89 HINDLEY AVE RESIDENTIAL	NO INFO AVAILABLE	NO INFO AVAILABLE
90 HINDLEY AVE RESIDENTIAL	NO INFO AVAILABLE	NO INFO AVAILABLE
91 HINDLEY AVE RESIDENTIAL	NO INFO AVAILABLE	NO INFO AVAILABLE
92 HINDLEY AVE RESIDENTIAL	NO INFO AVAILABLE	NO INFO AVAILABLE
93 HINDLEY AVE RESIDENTIAL	NO INFO AVAILABLE	NO INFO AVAILABLE
94 HINDLEY AVE RESIDENTIAL	NO INFO AVAILABLE	NO INFO AVAILABLE
95 HINDLEY AVE RESIDENTIAL	NO INFO AVAILABLE	NO INFO AVAILABLE
96 HINDLEY AVE RESIDENTIAL	NO INFO AVAILABLE	NO INFO AVAILABLE
97 HINDLEY AVE RESIDENTIAL	NO INFO AVAILABLE	NO INFO AVAILABLE
98 HINDLEY AVE RESIDENTIAL	NO INFO AVAILABLE	NO INFO AVAILABLE
103 HINDLEY AVE RESIDENTIAL	NO INFO AVAILABLE	NO INFO AVAILABLE
104 HINDLEY AVE RESIDENTIAL	NO INFO AVAILABLE	NO INFO AVAILABLE



METRIC
WHOLE NUMBERS INDICATE MILLIMETRES
DECIMALIZED NUMBERS INDICATE METRES

WARNING

IF POWER EQUIPMENT OR EXPLOSIVES ARE TO BE USED FOR EXCAVATION ON THIS PROJECT THE CONTRACTOR MUST:

- 1) NOTIFY THE GAS COMPANY OF THE PROPOSED LOCATION OF EXCAVATION.
- 2) TAKE PRECAUTION TO AVOID DAMAGE TO GAS COMPANY INSTALLATIONS.

SEE PROVINCIAL REGULATION 140/92 FOR DETAILS

Bench Mark
84R746 - N.W. Cor. Worthington Ave. & Fitzpatrick Rd., Tilt. on top of 0.05m dia. x 2.4m iron pipe, 3m S. of N.L. of Worthington Ave. & 2.1m E. of W.L. of Fitzpatrick Rd.



EXISTING	LEGEND-PLAN	PROPOSED	EXISTING	LEGEND-PLAN	PROPOSED	EXISTING	LEGEND-PROFILE	PROPOSED
150 WM	WATERMAIN	150 WM	HYDRO	150 WM	WATERMAIN	150 WM	HYDRANT, VALVE	150 WM
300 LDS	LAND DRAINAGE SEWER	300 LDS	CONCRETE	300 LDS	LAND DRAINAGE SEWER	300 LDS	WASTE WATER SEWER	300 LDS
250 WWS	WASTE WATER SEWER	250 WWS	ASPHALT	250 WWS	WASTE WATER SEWER	250 WWS	PROPERTY LINE	250 WWS
MANHOLE	MANHOLE	MANHOLE	SIDEWALK	MANHOLE	MANHOLE	MANHOLE	SURVEY BAR	MANHOLE
CATCH BASIN	CATCH BASIN	CATCH BASIN	PROPERTY LINE	CATCH BASIN	CATCH BASIN	CATCH BASIN	DITCH	CATCH BASIN
CURB INLET	CURB INLET	CURB INLET	DITCH	CURB INLET	CURB INLET	CURB INLET	ELEVATION	CURB INLET
JUNCTIONS	JUNCTIONS	JUNCTIONS	ELEVATION	JUNCTIONS	JUNCTIONS	JUNCTIONS	32.23	JUNCTIONS
CULVERT	CULVERT	CULVERT	31.334	CULVERT	CULVERT	CULVERT		CULVERT
GAS	GAS	GAS		GAS	GAS	GAS		GAS

LOCATION APPROVED UNDERGROUND STRUCTURES

SUPV. U/G STRUCTURES COMMITTEE

DATE

NOTE:
LOCATION OF UNDERGROUND STRUCTURES AS SHOWN ARE BASED ON THE BEST INFORMATION AVAILABLE BUT NO GUARANTEE IS GIVEN THAT ALL EXISTING UTILITIES ARE SHOWN OR THAT THE GIVEN LOCATIONS ARE EXACT. CONFIRMATION OF EXISTENCE AND EXACT LOCATION OF ALL SERVICES MUST BE OBTAINED FROM THE INDIVIDUAL UTILITIES BEFORE PROCEEDING WITH CONSTRUCTION.

Stantec Consulting Ltd.

905 Waverley Street, Winnipeg, Manitoba
Tel 204-489-5900 Fax 204-453-9012

DESIGNED BY: W.B. CHECKED BY: H.K.
DRAWN BY: J.U. APPROVED BY: H.K.

HOR. SCALE: 1:250
VERTICAL: 1:50

RELEASED FOR CONSTRUCTION:
ORIGINAL SIGNED BY: KASZUREK
DATE: 06.30.06

ENGINEER'S SEAL

ORIGINAL SEALED BY:
P. ENG. H.A. KATZ
06/30/06

CONSULTANT DRAWING NO.
C-205

THE CITY OF WINNIPEG
WATER AND WASTE DEPARTMENT
ENGINEERING DIVISION

HINDLEY AVENUE
1ST MH W OF FITZPATRICK RD TO MH AT FITZPATRICK RD
STA. 2+50 TO STA. 3+69
2006 SEWER RENEWAL BY CIPP LINING

SHEET 5 OF 19
CAD FILE DRAWING NUMBER: 090000-205675.DWG
CITY DRAWING NUMBER: 05839

V:\112\wshwa\11200000\dwg\09000-205675.dwg
2006-06-30 09:33AM By: jmu