

**SEWER JUNCTION INFORMATION (MA50012193)**  
 1ST MH WEST OF ST MARY'S RD (MHID 50009889) TO  
 MH ST MARY'S RD. (MHID 50009890)

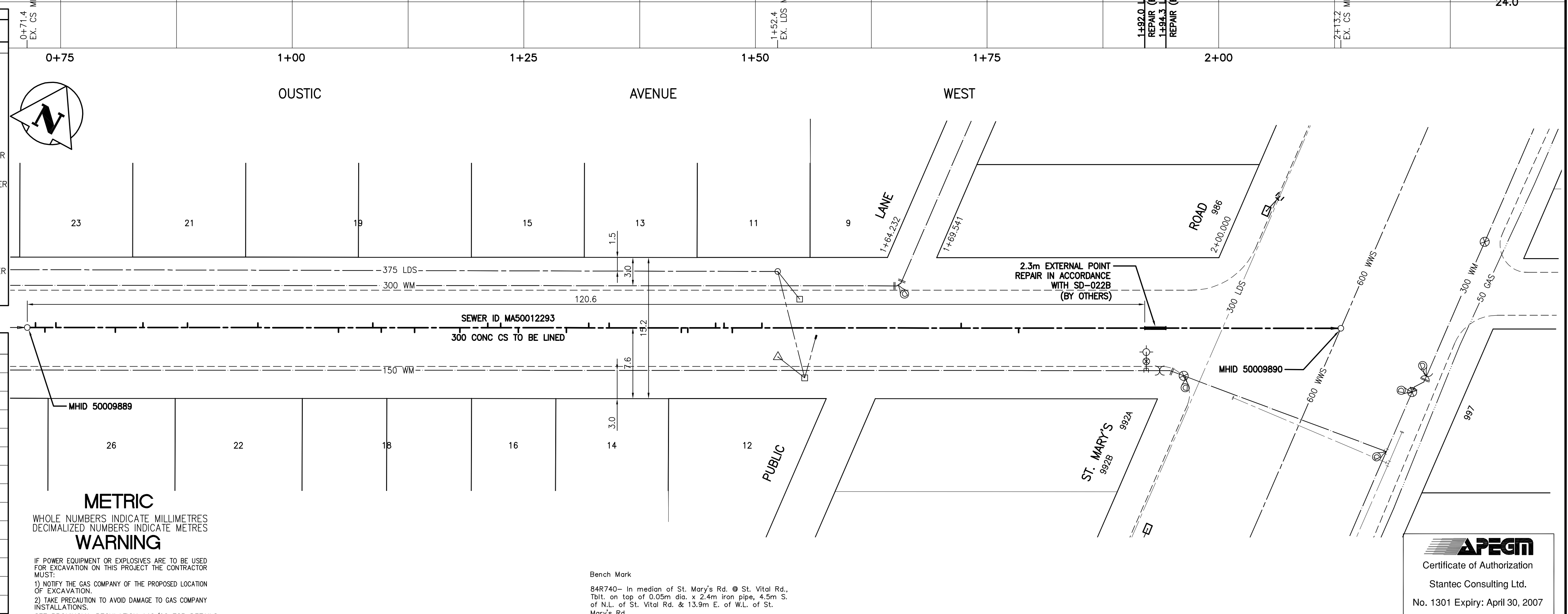
DISTANCE FROM 1ST MH W OF ST MARY'S (MH 50009889) \*

0.90	EAST	150 MM DIA.	NORTH	JN	CAPPED
1.90	EAST	150 MM DIA.	SOUTH	JN	
3.10	EAST	150 MM DIA.	NORTH	CNI	LIVE
9.50	EAST	150 MM DIA.	SOUTH	CNI	LIVE
12.5	EAST	150 MM DIA.	NORTH	JN	CAPPED
17.3	EAST	150 MM DIA.	NORTH	JN	
24.9	EAST	150 MM DIA.	NORTH	JN	CAPPED
33.6	EAST	150 MM DIA.	SOUTH	CNI	LIVE
37.3	EAST	150 MM DIA.	NORTH	JN	CAPPED
38.2	EAST	150 MM DIA.	SOUTH	JN	CAPPED
41.8	EAST	150 MM DIA.	SOUTH	CX	H IN ADJACENT SEWER
46.7	EAST	150 MM DIA.	SOUTH	CNI	CAPPED
49.7	EAST	150 MM DIA.	NORTH	JN	CAPPED
51.1	EAST	150 MM DIA.	NORTH	JX	FL IN ADJACENT SEWER
53.0	EAST	150 MM DIA.	SOUTH	CNI	LIVE
58.2	EAST	150 MM DIA.	SOUTH	JN	CAPPED
60.6	EAST	150 MM DIA.	NORTH	CNI	LIVE
62.8	EAST	150 MM DIA.	NORTH	JN	
70.6	EAST	150 MM DIA.	SOUTH	JN	CAPPED
71.3	EAST	150 MM DIA.	SOUTH	CNI	LIVE
74.3	EAST	150 MM DIA.	NORTH	JN	
75.2	EAST	150 MM DIA.	NORTH	CNI	
76.1	EAST	150 MM DIA.	SOUTH	CXI	FC IN ADJACENT SEWER
79.3	EAST	150 MM DIA.	NORTH	CNI	LIVE
100.8	EAST	150 MM DIA.	NORTH	JX	
107.0	EAST	150 MM DIA.	SOUTH	JN	CAPPED

\* Information from Sewer Video Inspection

**SEWER SERVICE INFORMATION**

ADDRESS	SIZE	PROPERTY LINE LOCATION
9 OUSTIC AVE RESIDENTIAL	NO INFO AVAILABLE	NO INFO AVAILABLE
11 OUSTIC AVE RESIDENTIAL	NO INFO AVAILABLE	NO INFO AVAILABLE
12 OUSTIC AVE RESIDENTIAL	NO INFO AVAILABLE	NO INFO AVAILABLE
13 OUSTIC AVE RESIDENTIAL	NO INFO AVAILABLE	NO INFO AVAILABLE
14 OUSTIC AVE RESIDENTIAL	NO INFO AVAILABLE	NO INFO AVAILABLE
15 OUSTIC AVE RESIDENTIAL	NO INFO AVAILABLE	NO INFO AVAILABLE
16 OUSTIC AVE RESIDENTIAL	NO INFO AVAILABLE	NO INFO AVAILABLE
18 OUSTIC AVE RESIDENTIAL	NO INFO AVAILABLE	NO INFO AVAILABLE
19 OUSTIC AVE RESIDENTIAL	NO INFO AVAILABLE	NO INFO AVAILABLE
21 OUSTIC AVE RESIDENTIAL	NO INFO AVAILABLE	NO INFO AVAILABLE
22 OUSTIC AVE RESIDENTIAL	150 mm	1.52 m EWHL
23 OUSTIC AVE RESIDENTIAL	NO INFO AVAILABLE	NO INFO AVAILABLE
26 OUSTIC AVE RESIDENTIAL	NO INFO AVAILABLE	NO INFO AVAILABLE
28 OUSTIC AVE RESIDENTIAL	NO INFO AVAILABLE	NO INFO AVAILABLE



**METRIC**  
 WHOLE NUMBERS INDICATE MILLIMETRES  
 DECIMALIZED NUMBERS INDICATE METRES  
**WARNING**  
 IF POWER EQUIPMENT OR EXPLOSIVES ARE TO BE USED FOR EXCAVATION ON THIS PROJECT THE CONTRACTOR MUST:  
 1) NOTIFY THE GAS COMPANY OF THE PROPOSED LOCATION OF EXCAVATION.  
 2) TAKE PRECAUTION TO AVOID DAMAGE TO GAS COMPANY INSTALLATIONS.  
 SEE PROVINCIAL REGULATION 140/92 FOR DETAILS

EXISTING	LEGEND-PLAN	PROPOSED	EXISTING	LEGEND-PLAN	PROPOSED	EXISTING	LEGEND-PROFILE	PROPOSED
150 WM	WATERMAIN	150 WM	HYDRANT	HYDRANT	HYDRANT	150 WM	WATERMAIN	150 WM
300 LDS	LAND DRAINAGE SEWER	300 LDS	VALVE	VALVE	VALVE	300 LDS	LAND DRAINAGE SEWER	300 LDS
250 WWS	WASTE WATER SEWER	250 WWS	MANHOLE	MANHOLE	MANHOLE	250 WWS	WASTE WATER SEWER	250 WWS
			CATCH BASIN	CATCH BASIN	CATCH BASIN			
			CURB INLET	CURB INLET	CURB INLET			
			JUNCTIONS	JUNCTIONS	JUNCTIONS			
			CULVERT	CULVERT	CULVERT			
			GAS	GAS	GAS			

**LOCATION APPROVED UNDERGROUND STRUCTURES**

SUPV. U/G STRUCTURES COMMITTEE	DATE

**NOTE:**  
 LOCATION OF UNDERGROUND STRUCTURES AS SHOWN ARE BASED ON THE BEST INFORMATION AVAILABLE BUT NO GUARANTEE IS GIVEN THAT ALL EXISTING UTILITIES ARE SHOWN OR THAT THE GIVEN LOCATIONS ARE EXACT. CONFIRMATION OF EXISTENCE AND EXACT LOCATION OF ALL SERVICES MUST BE OBTAINED FROM THE INDIVIDUAL UTILITIES BEFORE PROCEEDING WITH CONSTRUCTION.

**Stantec Consulting Ltd.**  
 905 Waverly Street, Winnipeg, Manitoba  
 Tel 204-489-5900 Fax 204-453-9012

DESIGNED BY: W.B. CHECKED BY: H.K.  
 DRAWN BY: J.U. APPROVED BY: H.K.

HOR. SCALE: 1:250  
 VERTICAL: 1:50

RELEASED FOR CONSTRUCTION: ORIGINAL SIGNED BY: KASZUREK  
 DATE: 06.30.06

ENGINEER'S SEAL  
 ORIGINAL SEALED BY: H.A. KATZ  
 P. ENG. 06/30/06

CONSULTANT DRAWING NO. C-209

**THE CITY OF WINNIPEG**  
 WATER AND WASTE DEPARTMENT  
 ENGINEERING DIVISION

**Winnipeg**

**OUSTIC AVENUE WEST**  
 1ST MH W OF ST MARY'S RD TO MH AT ST MARY'S RD  
 STA. 0+71 TO STA. 2+13  
 2006 SEWER RENEWAL BY CIPP LINING

SHEET 9 OF 19  
 CAD FILE DRAWING NUMBER 09000C-209675.DWG  
 CITY DRAWING NUMBER 05843

V:\112\wma\11200000\wma\09000\09000-209675.dwg  
 2006-06-30 09:35AM By: jmu