

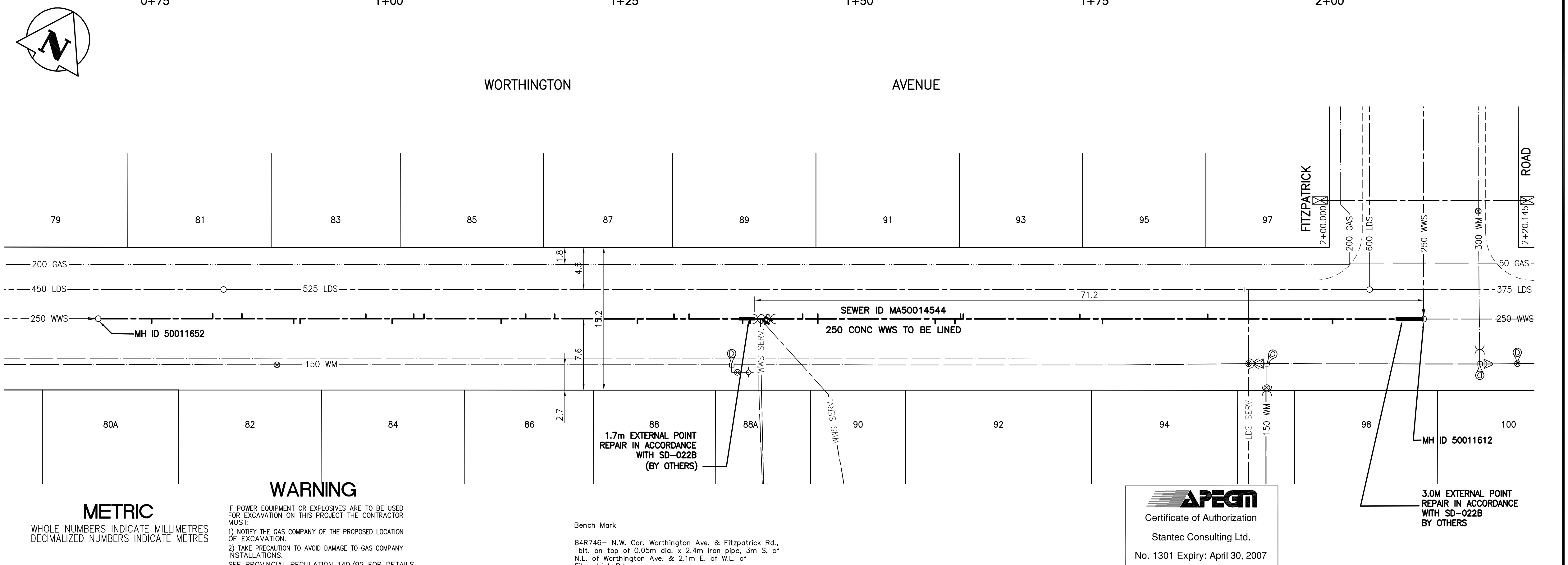
SEWER JUNCTION INFORMATION (MA50014544)
 1ST MH WEST OF FITZPATRICK RD (MHID 50011652) TO
 MH AT FITZPATRICK RD (MHID 50011612)
 DISTANCE FROM MH AT FITZPATRICK RD (MH 50011612) *

9.7	WEST	150 MM DIA.	SOUTH	JN	LIVE
23.0	WEST	150 MM DIA.	NORTH	JN	LIVE
34.2	WEST	150 MM DIA.	SOUTH	JN	
36.6	WEST	150 MM DIA.	NORTH	JN	CAPPED
49.0	WEST	150 MM DIA.	NORTH	JN	
49.3	WEST	150 MM DIA.	NORTH	CN	
49.9	WEST	150 MM DIA.	SOUTH	JN	CAPPED
52.0	WEST	150 MM DIA.	SOUTH	CN	
64.5	WEST	150 MM DIA.	NORTH	CN	
64.5	WEST	150 MM DIA.	SOUTH	JN	
66.1	WEST	150 MM DIA.	NORTH	JN	CAPPED
71.7	WEST	150 MM DIA.	SOUTH	JN	LIVE
72.5	WEST	150 MM DIA.	SOUTH	JN	
78.2	WEST	150 MM DIA.	NORTH	CN	
79.8	WEST	150 MM DIA.	NORTH	JN	CAPPED
83.7	WEST	150 MM DIA.	SOUTH	JN	
92.5	WEST	150 MM DIA.	NORTH	JN	
95.6	WEST	150 MM DIA.	NORTH	JN	CAPPED
98.2	WEST	150 MM DIA.	SOUTH	CNI	
106.4	WEST	150 MM DIA.	NORTH	JN	CAPPED
107.5	WEST	150 MM DIA.	NORTH	CN	LIVE
109.8	WEST	150 MM DIA.	SOUTH	CN	
112.6	WEST	150 MM DIA.	NORTH	JN	CAPPED
119.6	WEST	150 MM DIA.	SOUTH	JN	CAPPED
120.3	WEST	150 MM DIA.	SOUTH	CNI	LIVE
125.8	WEST	150 MM DIA.	NORTH	CN	LIVE
128.9	WEST	150 MM DIA.	NORTH	JN	CAPPED
135.4	WEST	150 MM DIA.	SOUTH	JN	

* Information from Sewer Video Inspection

SEWER SERVICE INFORMATION

ADDRESS	SIZE	PROPERTY LINE LOCATION
79 WORTHINGTON AVE RESIDENTIAL	NO INFO AVAILABLE	NO INFO AVAILABLE
80A WORTHINGTON AVE RESIDENTIAL	NO INFO AVAILABLE	NO INFO AVAILABLE
81 WORTHINGTON AVE RESIDENTIAL	NO INFO AVAILABLE	NO INFO AVAILABLE
82 WORTHINGTON AVE RESIDENTIAL	NO INFO AVAILABLE	NO INFO AVAILABLE
83 WORTHINGTON AVE RESIDENTIAL	NO INFO AVAILABLE	NO INFO AVAILABLE
84 WORTHINGTON AVE RESIDENTIAL	NO INFO AVAILABLE	NO INFO AVAILABLE
85 WORTHINGTON AVE RESIDENTIAL	NO INFO AVAILABLE	NO INFO AVAILABLE
86 WORTHINGTON AVE RESIDENTIAL	NO INFO AVAILABLE	NO INFO AVAILABLE
87 WORTHINGTON AVE RESIDENTIAL	NO INFO AVAILABLE	NO INFO AVAILABLE
88 WORTHINGTON AVE RESIDENTIAL	NO INFO AVAILABLE	NO INFO AVAILABLE
89 WORTHINGTON AVE RESIDENTIAL	NO INFO AVAILABLE	NO INFO AVAILABLE
90 WORTHINGTON AVE RESIDENTIAL	NO INFO AVAILABLE	NO INFO AVAILABLE
91 WORTHINGTON AVE RESIDENTIAL	NO INFO AVAILABLE	NO INFO AVAILABLE
92 WORTHINGTON AVE RESIDENTIAL	NO INFO AVAILABLE	NO INFO AVAILABLE
93 WORTHINGTON AVE RESIDENTIAL	NO INFO AVAILABLE	NO INFO AVAILABLE
94 WORTHINGTON AVE RESIDENTIAL	NO INFO AVAILABLE	NO INFO AVAILABLE
95 WORTHINGTON AVE RESIDENTIAL	NO INFO AVAILABLE	NO INFO AVAILABLE
97 WORTHINGTON AVE RESIDENTIAL	NO INFO AVAILABLE	NO INFO AVAILABLE
98 WORTHINGTON AVE RESIDENTIAL	NO INFO AVAILABLE	NO INFO AVAILABLE
100 WORTHINGTON AVE RESIDENTIAL	NO INFO AVAILABLE	NO INFO AVAILABLE



WARNING
 IF POWER EQUIPMENT OR EXPLOSIVES ARE TO BE USED FOR EXCAVATION ON THIS PROJECT THE CONTRACTOR MUST:
 1) NOTIFY THE GAS COMPANY OF THE PROPOSED LOCATION OF EXCAVATION.
 2) TAKE PRECAUTION TO AVOID DAMAGE TO GAS COMPANY INSTALLATIONS.
 SEE PROVINCIAL REGULATION 140/92 FOR DETAILS

LOCATION APPROVED UNDERGROUND STRUCTURES

NO.	REVISIONS	DATE	BY

DESIGNED BY: W.B. CHECKED BY: H.K.
 DRAWN BY: J.U. APPROVED BY: H.K.
 HOR. SCALE: 1:250
 VERTICAL: 1:50
 RELEASED FOR CONSTRUCTION: ORIGINAL SIGNED BY: KASZUREK
 DATE: 06.30.06

Stantec Consulting Ltd.
 905 Waverley Street, Winnipeg, Manitoba
 Tel 204-489-5900 Fax 204-453-9012

ENGINEER'S SEAL
 ORIGINAL SEALED BY: H.A. KATZ
 P. ENG. 06/30/06
 CONSULTANT DRAWING NO. C-216

THE CITY OF WINNIPEG
 WATER AND WASTE DEPARTMENT
 ENGINEERING DIVISION

WORTHINGTON AVENUE
 1ST MH W FITZPATRICK TO MH AT FITZPATRICK
 STA. 0+68 TO STA. 2+10
 2006 SEWER RENEWAL BY CIPP LINING

SHEET 16 OF 19
 CAD FILE DRAWING NUMBER 09000C-216675.DWG
 CITY DRAWING NUMBER 05850

V:\112\wsh\11200000\dwg\09000c-216675.dwg
 2006-06-30 09:30AM By: jmu