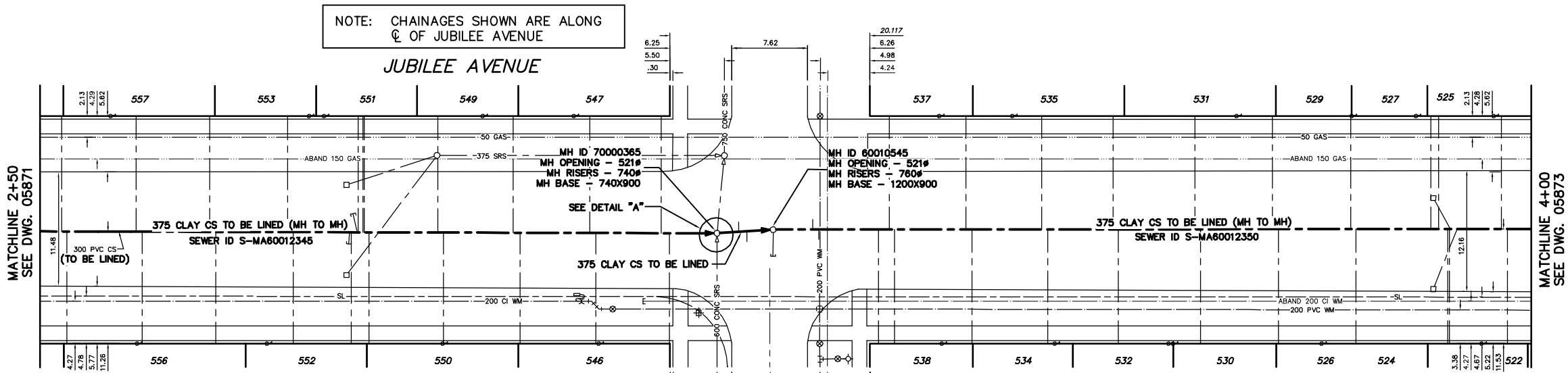


ADDRESS	SIZE	R DIST	JUNCTION TIE
522 JUBILEE AVENUE	-	-	-
RESIDENTIAL	-	-	NO INFORMATION AVAILABLE
524 JUBILEE AVENUE	-	-	SHARED SRV. W/ #526 JUBILEE
RESIDENTIAL	-	-	38.10 W OF 2ND MH W OF OSBORNE
526 JUBILEE AVENUE	-	-	NO INFORMATION AVAILABLE
RESIDENTIAL	-	-	38.10 W OF 2ND MH W OF OSBORNE
527 JUBILEE AVENUE	-	-	4.57 W OF E R
RESIDENTIAL	-	-	NO INFORMATION AVAILABLE
529 JUBILEE AVENUE	-	-	31.09 W OF 2ND MH W OF OSBORNE
RESIDENTIAL	-	-	8.84 W OF E R
530 JUBILEE AVENUE	-	-	NO INFORMATION AVAILABLE
RESIDENTIAL	-	-	46.33 W OF 2ND MH W OF OSBORNE
531 JUBILEE AVENUE	-	-	NO INFORMATION AVAILABLE
RESIDENTIAL	-	-	53.64 W OF 2ND MH W OF OSBORNE
532 JUBILEE AVENUE	-	-	NO INFORMATION AVAILABLE
RESIDENTIAL	-	-	69.04 W OF 2ND MH W OF OSBORNE
534 JUBILEE AVENUE	-	-	NO INFORMATION AVAILABLE
RESIDENTIAL	-	-	69.65 W OF 2ND MH W OF OSBORNE
535 JUBILEE AVENUE	-	-	NO INFORMATION AVAILABLE
RESIDENTIAL	-	-	NO INFORMATION AVAILABLE

ADDRESS	SIZE	R DIST	JUNCTION TIE
537 JUBILEE AVENUE	-	-	77.57 W OF 2ND MH W OF OSBORNE
RESIDENTIAL	-	-	-
538 JUBILEE AVENUE	-	-	76.96 W OF 2ND MH W OF OSBORNE
RESIDENTIAL	-	-	-
546 JUBILEE AVENUE	-	-	17.68 W OF MH @ NASSAU
RESIDENTIAL	-	-	-
547 JUBILEE AVENUE	-	-	18.29 W OF MH @ NASSAU
RESIDENTIAL	-	-	-
549 JUBILEE AVENUE	-	-	41.15 W OF MH @ NASSAU
RESIDENTIAL	-	-	-
550 JUBILEE AVENUE	-	-	32.92 W OF MH @ NASSAU
RESIDENTIAL	-	-	-
551 JUBILEE AVENUE	-	-	25.91 W OF MH @ NASSAU
RESIDENTIAL	-	-	-
552 JUBILEE AVENUE	-	-	23.09 W OF MH @ NASSAU
RESIDENTIAL	-	-	-
553 JUBILEE AVENUE	-	-	NO INFORMATION AVAILABLE
RESIDENTIAL	-	-	-
556 JUBILEE AVENUE	-	-	48.16 W OF MH @ NASSAU
RESIDENTIAL	-	-	-
557 JUBILEE AVENUE	-	-	NO INFORMATION AVAILABLE
RESIDENTIAL	-	-	-

NOTE: CHAINAGES SHOWN ARE ALONG
 Q OF JUBILEE AVENUE

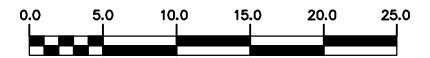


SEWER JUNCTION INFORMATION FROM SEWER VIDEO INSPECTION SEWER ID S-MA60012345		
DISTANCE FROM MH ID S-MH60010540		
38.10	E	150 NORTH JN
38.60	E	150 SOUTH JN
45.60	E	150 NORTH JN
46.20	E	150 SOUTH JN
53.00	E	150 NORTH JN
53.60	E	150 SOUTH JN
60.80	E	150 NORTH JN
61.40	E	150 SOUTH JN
67.20	E	150 NORTH JN
67.90	E	150 SOUTH JN
68.40	E	150 NORTH JN
68.50	E	150 SOUTH JN
69.00	E	150 NORTH JN
75.90	E	150 SOUTH JN
76.50	E	150 NORTH JN
83.50	E	150 SOUTH JN

SEWER JUNCTION INFORMATION FROM SEWER VIDEO INSPECTION SEWER ID S-MA60012345		
DISTANCE FROM MH ID S-MH60010540		
84.20	E	150 SOUTH JN
91.20	E	150 NORTH JN
91.80	E	150 SOUTH JN
98.40	E	150 NORTH JN
99.20	E	150 SOUTH JN

SEWER JUNCTION INFORMATION FROM SEWER VIDEO INSPECTION SEWER ID S-MH60010545		
DISTANCE FROM MH ID S-MH60010545		
4.00	E	150 NORTH JN
4.80	E	150 SOUTH JN
10.80	E	150 NORTH JN
11.70	E	150 SOUTH JN
12.20	E	150 NORTH JN
12.80	E	150 SOUTH JN
19.40	E	150 NORTH JN
20.00	E	150 SOUTH JN
27.00	E	150 NORTH JN
27.60	E	150 SOUTH JN
34.20	E	150 NORTH JN
34.70	E	150 SOUTH JN
42.40	E	150 NORTH JN
43.00	E	150 SOUTH JN
50.20	E	150 NORTH JN
50.80	E	150 SOUTH JN
58.10	E	150 NORTH JN
58.60	E	150 SOUTH JN

SEWER JUNCTION INFORMATION FROM SEWER VIDEO INSPECTION SEWER ID S-MA60012350		
DISTANCE FROM MH ID S-MH60010591		
22.70	W	150 SOUTH JN
23.30	W	150 NORTH JN
28.50	W	150 SOUTH JN
28.70	W	150 NORTH JN
29.60	W	150 SOUTH JN
30.40	W	150 NORTH JN



METRIC
 WHOLE NUMBERS INDICATE MILLIMETRES
 DECIMALIZED NUMBERS INDICATE METRES

WARNING
 IF POWER EQUIPMENT OR EXPLOSIVES ARE TO BE USED FOR EXCAVATION ON THIS PROJECT THE CONTRACTOR MUST:
 1) NOTIFY THE GAS COMPANY OF THE PROPOSED LOCATION OF EXCAVATION.
 2) TAKE PRECAUTION TO AVOID DAMAGE TO GAS COMPANY INSTALLATIONS.
 SEE PROVINCIAL REGULATION 210/72 FOR DETAILS

200 WM	WATERMAIN	200 WM	SL, HYDRO	150 WM	WATERMAIN	150 WM
+	HYDRANT	+	MTS	+	HYDRANT	+
o	VALVE	o	TRAFFIC SIGNALS	+	VALVE	+
525 LDS	LAND DRAINAGE SEWER	525 LDS	GAS	50 GAS	LAND DRAINAGE SEWER	300 LDS
375 WWS	WASTEWATER SEWER	375 WWS	SURVEY BAR	250 WWS	WASTEWATER SEWER	250 WWS
o	MANHOLE	o	FENCE	x	? PROFILE	
□	CATCH BASIN	□	POLE - HYDRO, MTS	▲	GROUND ABOVE PIPE	
▽	CURB INLET	▽	CURB STOP	△	? DITCH (NORTH & WEST)	
+	JUNCTIONS	+	GUY ANCHOR	▽	? DITCH (SOUTH & EAST)	
+	CULVERT	+	LIGHT STANDARD	□	GUTTER (NORTH & WEST)	
+	ANODE	+	TREE	○	GUTTER (SOUTH & EAST)	
EXISTING	LEGEND-PLAN	PROPOSED	EXISTING	LEGEND-PLAN	PROPOSED	EXISTING

LOCATION APPROVED UNDERGROUND STRUCTURES	
SUPV. U/O STRUCTURES COMMITTEE	DATE
NOTE: LOCATION OF UNDERGROUND STRUCTURES AS SHOWN ARE BASED ON THE BEST INFORMATION AVAILABLE BUT NO GUARANTEE IS GIVEN THAT ALL EXISTING UTILITIES ARE SHOWN OR THAT THE GIVEN LOCATIONS ARE EXACT. CONFIRMATION OF EXISTENCE AND EXACT LOCATION OF ALL SERVICES MUST BE OBTAINED FROM THE INDIVIDUAL UTILITIES BEFORE PROCEEDING WITH CONSTRUCTION.	
B.M. ELEV.	FIELD BOOK #
POSTED TO LIS	
NO. REVISIONS	DATE BY

CITY OF WINNIPEG
WATER AND WASTE
ENGINEERING DIVISION

DESIGNED BY: TW/SC
 CHECKED BY: TW/KZ

DRAWN BY: RC
 APPROVED BY: KZ

HOR. SCALE: 1:250
 VERTICAL: 1:50

RELEASED FOR CONSTRUCTION

DATE: 2006 06 28

ENGINEER'S SEAL

ORIGINAL SIGNED BY
S.R.J. COUNOYER
 06/06/29

THE CITY OF WINNIPEG
 WATER AND WASTE DEPARTMENT

2006 COMBINED SEWER RENEWALS
 BY CIPP LINING

JUBILEE AVENUE
 1ST MH W OF NASSAU ST S TO
 MH AT NASSAU ST S (WPL)

SHEET 7 OF 29
 CITY DRAWING NUMBER
05872

BID OPPORTUNITY: 42B-2006
 FILENAME: 05871_to_74.dwg
 PLOT DATE: 2006 06 28