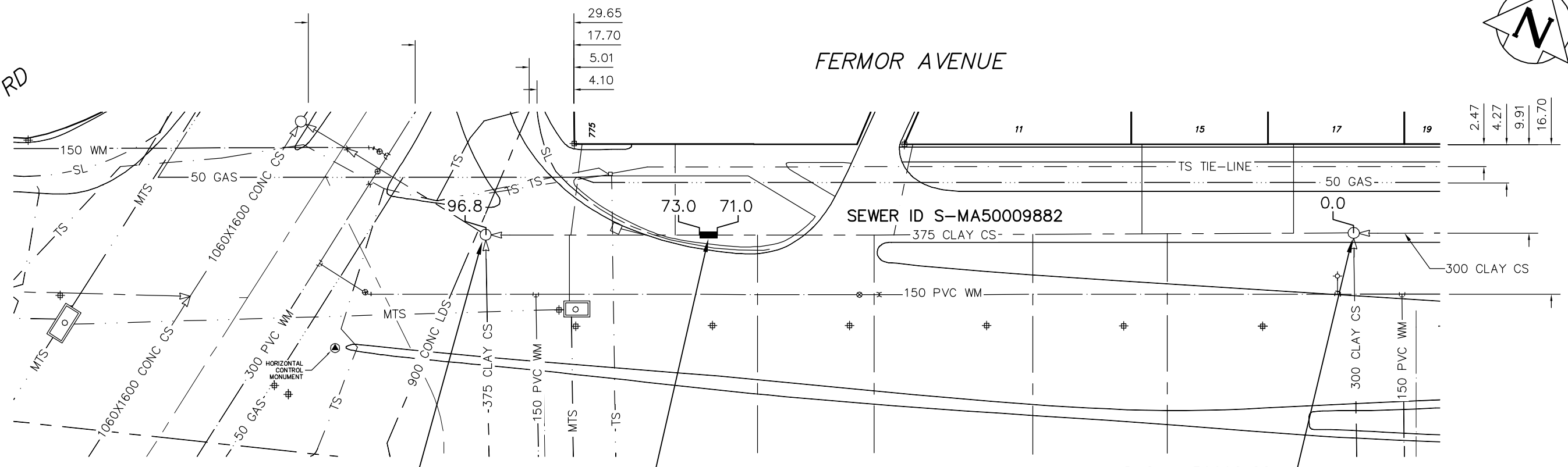
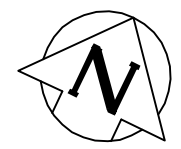


ST. MARYS RD

FERMOR AVENUE



MH ID S-MH50008129  
 MH AT ST. MARYS RD  
 RIM 231.788  
 INV W 227.223  
 INV E 227.223  
 INV S 227.223

2.0 OF CIPP INTERNAL  
 POINT REPAIR

MH ID S-MH50008128  
 1ST MH E OF ST. MARYS RD  
 RIM 231.147  
 INV W 227.332  
 INV E 227.332  
 INV S 227.332

SEWER JUNCTION INFORMATION
DISTANCE FROM 1ST MH E OF ST. MARYS ROAD (ID S-MH50008128)
NO SERVICES WITHIN REPAIR

INFORMATION FROM SEWER VIDEO INSPECTION

SEWER SERVICE INFORMATION		
ADDRESS	SIZE	R DIST JUNCTION TIE
11 FERMOR AVE		-
RESIDENTIAL		NO INFO AVAILABLE
15 FERMOR AVE		-
RESIDENTIAL		NO INFO AVAILABLE
17 FERMOR AVE		-
RESIDENTIAL		NO INFO AVAILABLE
775 ST. MARY'S RD		-
RESIDENTIAL		NO INFO AVAILABLE

ENGINEER'S SEAL

ORIGINAL SIGNED  
 BY  
 S.R.J. COURNOYER  
 06/06/29

BID OPPORTUNITY No: 429-2006  
 FILENAME : 05890.dwg  
 PLOT DATE : 2006 06 28

LEGEND:  
 52.0 | MEASUREMENT TO REPAIR FROM REFERENCE MH SHOWN THUS...

**METRIC**  
 WHOLE NUMBERS INDICATE MILLIMETRES  
 DECIMALIZED NUMBERS INDICATE METRES

B.M. ELEV.	FIELD BOOK #:	<b>CITY OF WINNIPEG</b> <b>WATER AND WASTE</b> <b>ENGINEERING DIVISION</b>	<b>THE CITY OF WINNIPEG</b> <b>WATER AND WASTE DEPARTMENT</b>	<b>2006 COMBINED SEWER RENEWALS AND SEWER REPAIRS</b> <b>FERMOR AVENUE (W CL)</b> <b>2ND MH W OF ST THOMAS RD TO MH AT ST. MARY'S RD (EPL)</b>	SHEET <b>24</b> OF <b>29</b> CITY DRAWING NUMBER <b>05890</b>
POSTED TO LBIS					
DESIGNED BY	TW/SC	CHECKED BY	TW/KZ		
DRAWN BY	CJH/PB	APPROVED BY	KZ		
HOR. SCALE	1:500	RELEASED FOR CONSTRUCTION			
NO.	REVISIONS	DATE	BY	DATE	2006 06 28