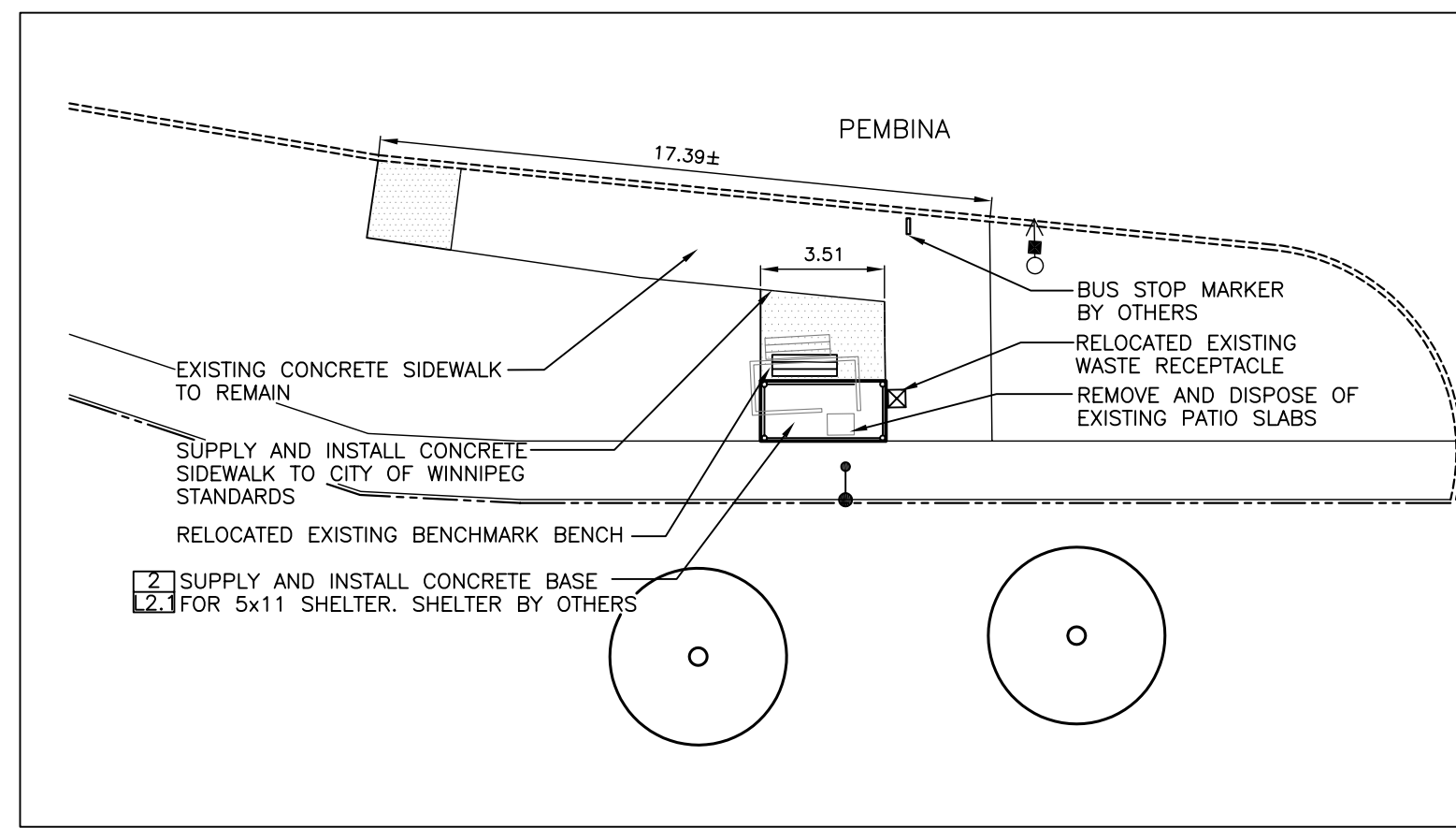
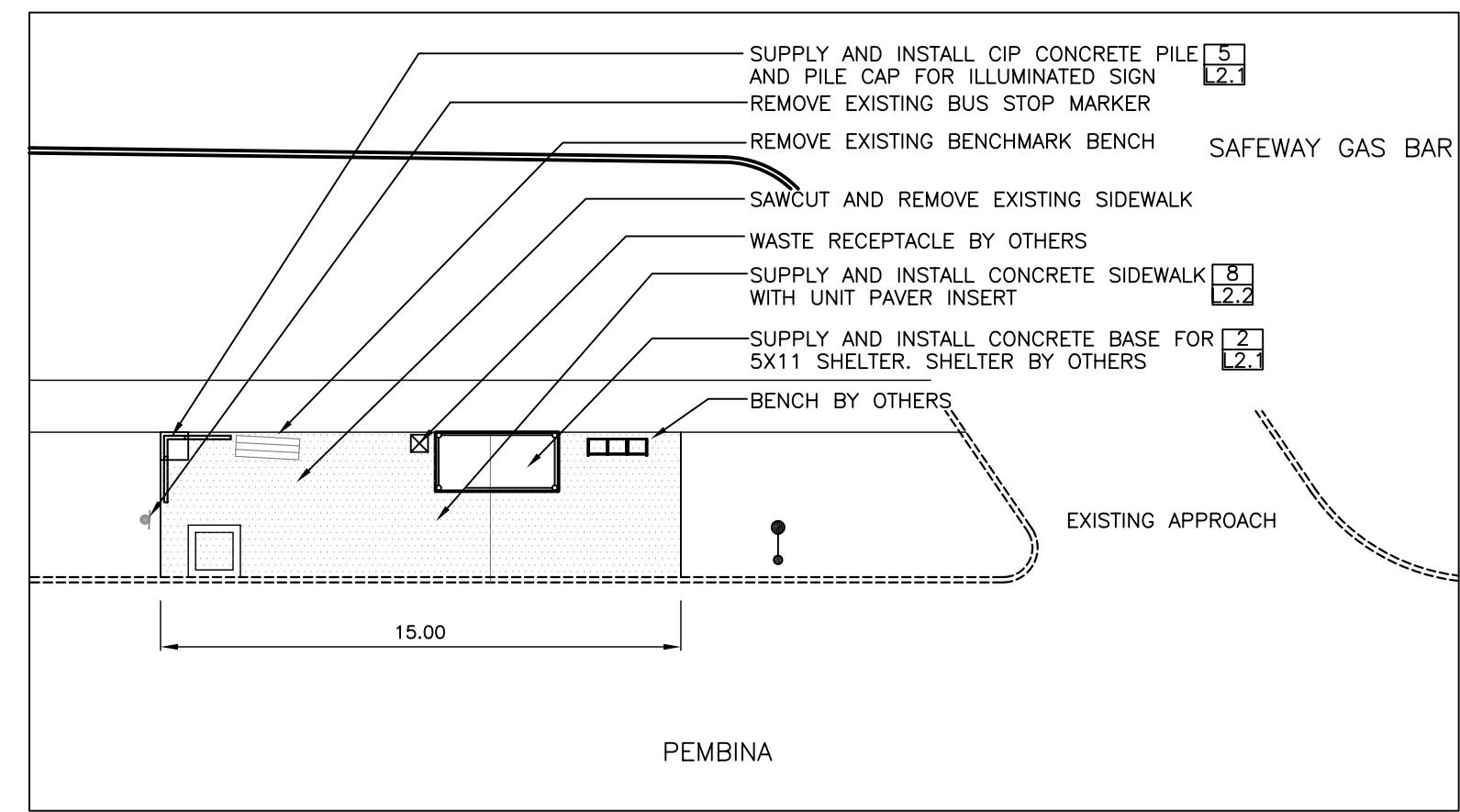


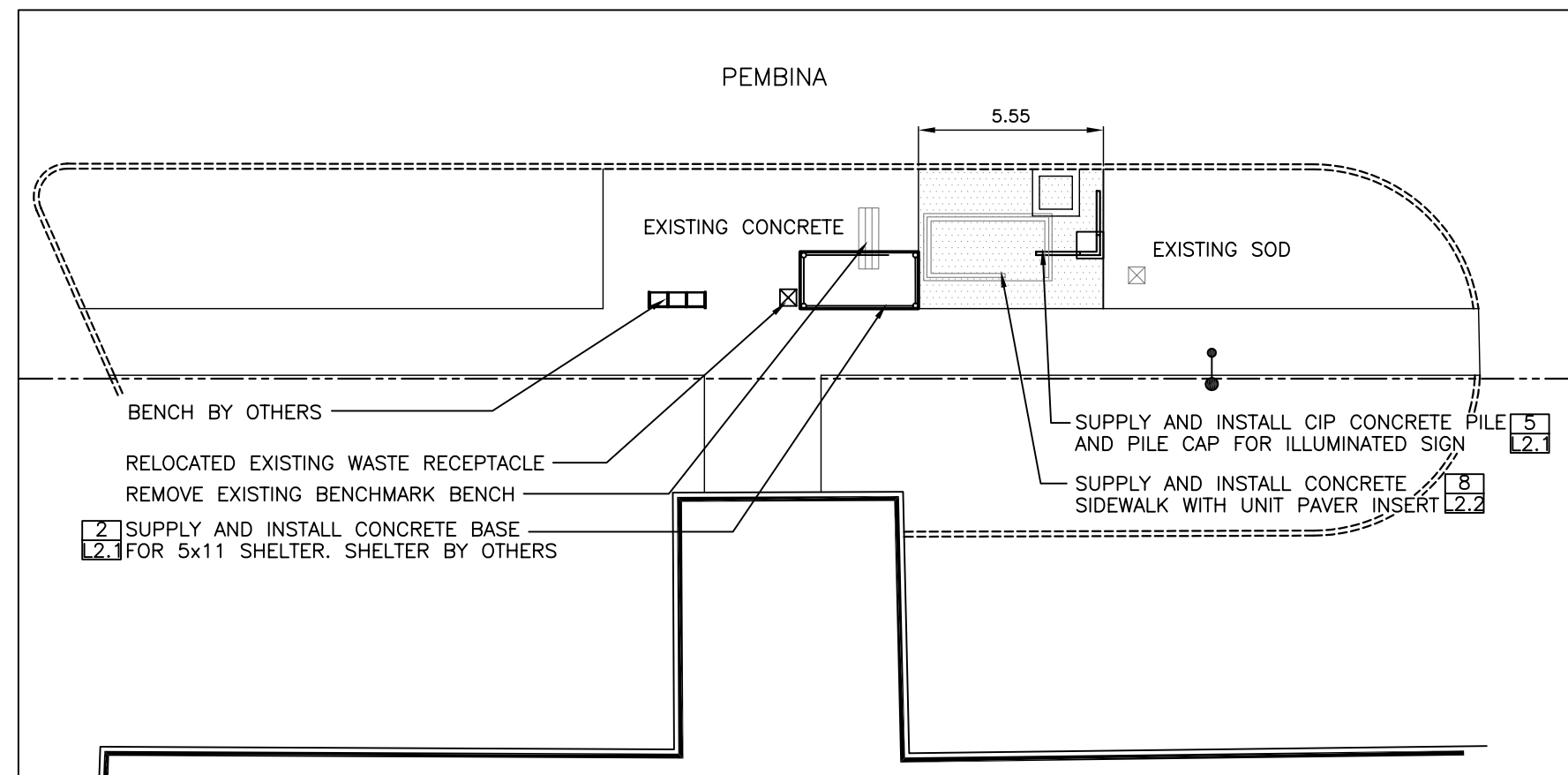
SOUTHBOUND PEMBINA OPPOSITE UNIVERSITY CRESCENT
STOP 60138 UNIVERSITY CR.



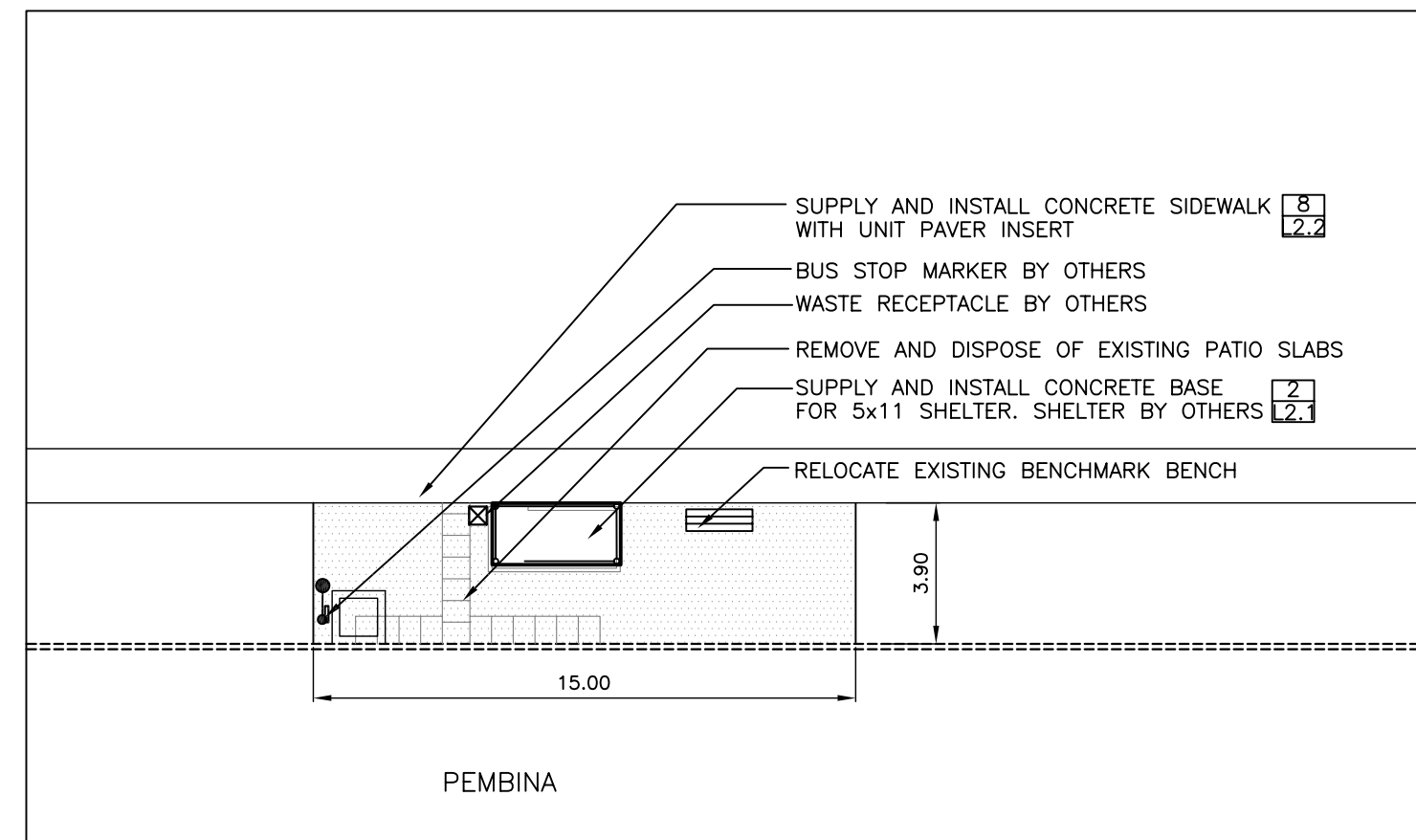
NORTHBOUND PEMBINA OPP. CHANCELLOR
STOP 60127 CHANCELLOR



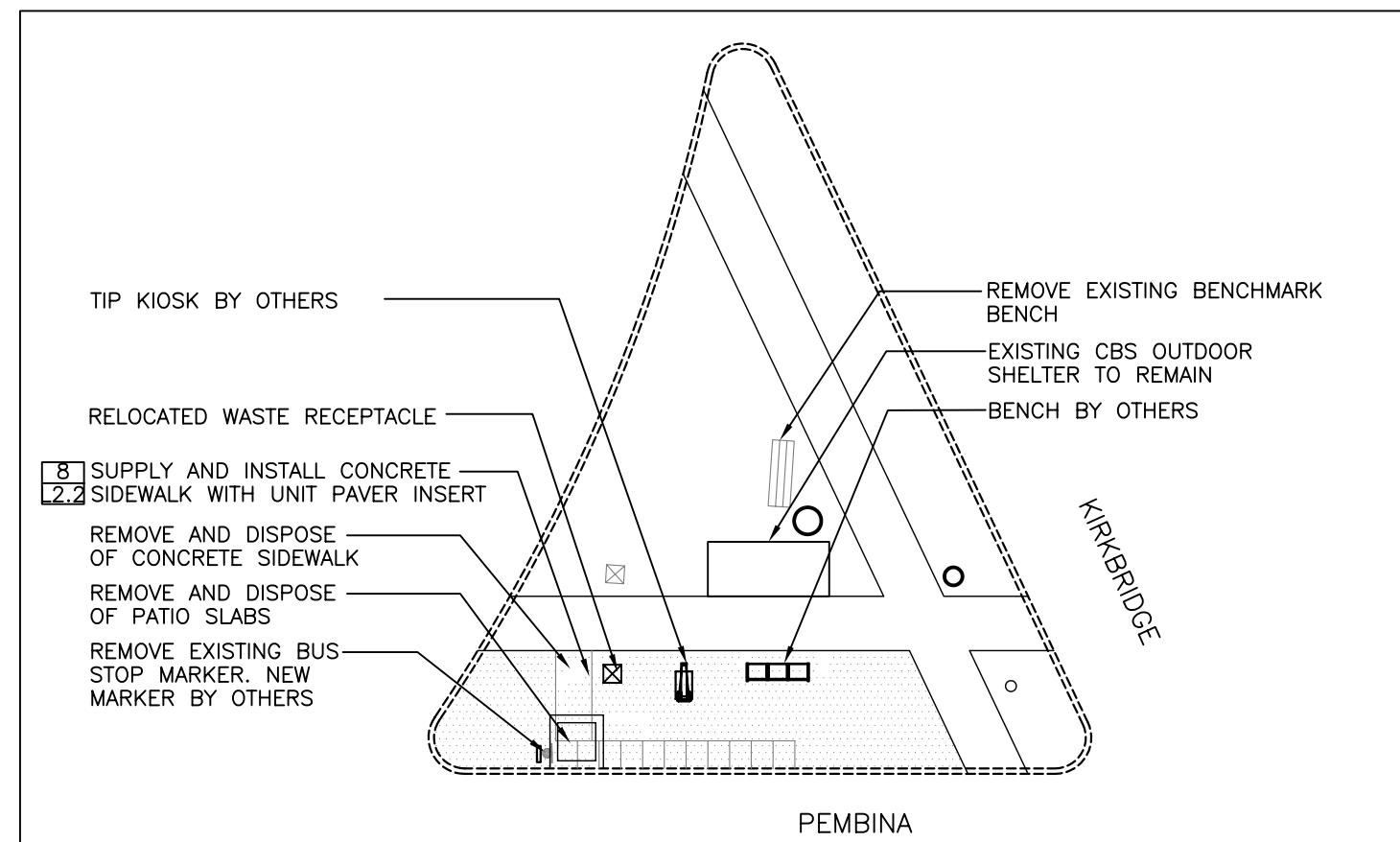
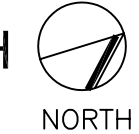
SOUTHBOUND PEMBINA NEARSIDE SOUTHPARK
STOP 60128 SOUTHPARK



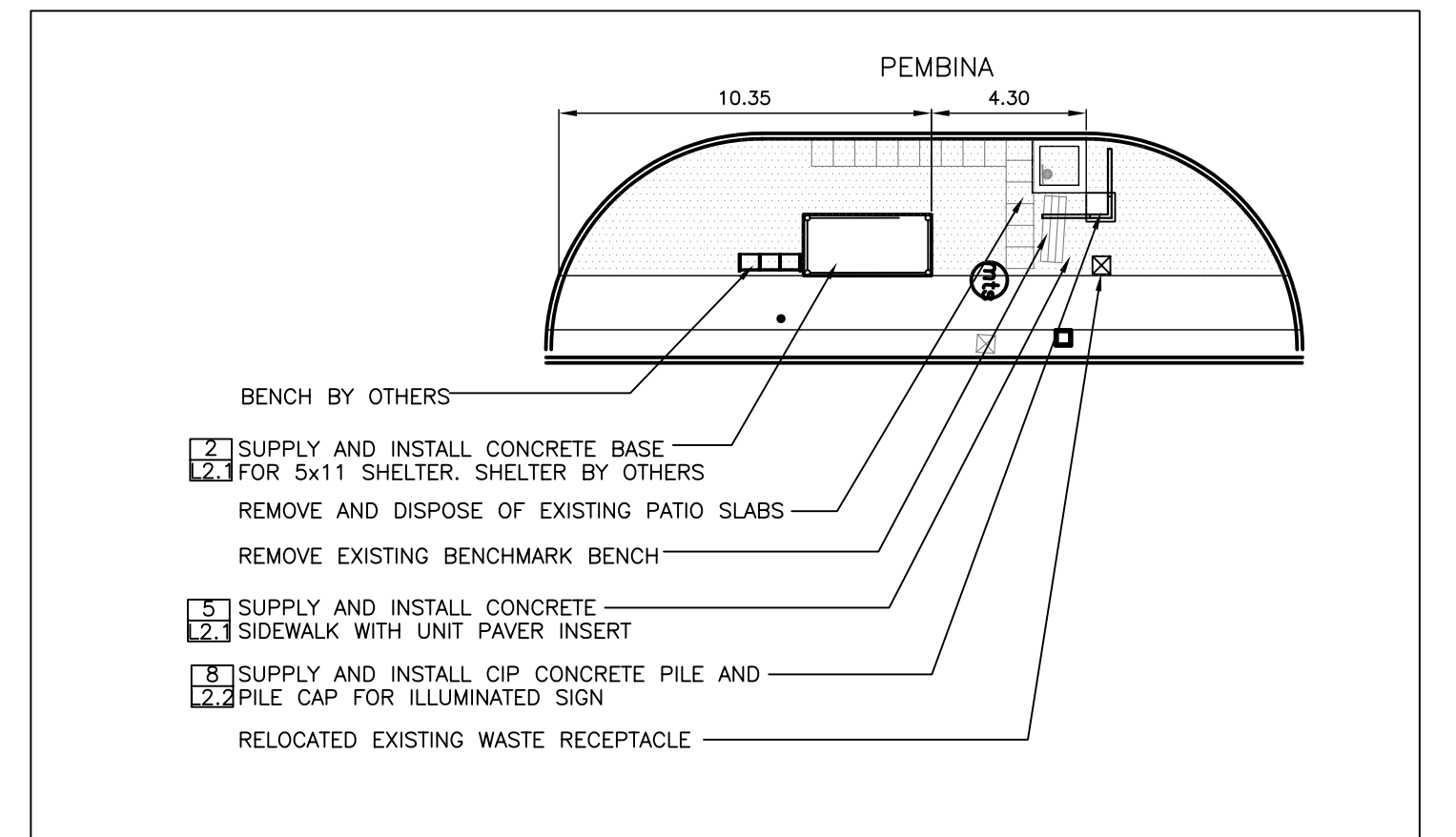
NORTHBOUND PEMBINA NEARSIDE MARKHAM
STOP 60121 MARKHAM



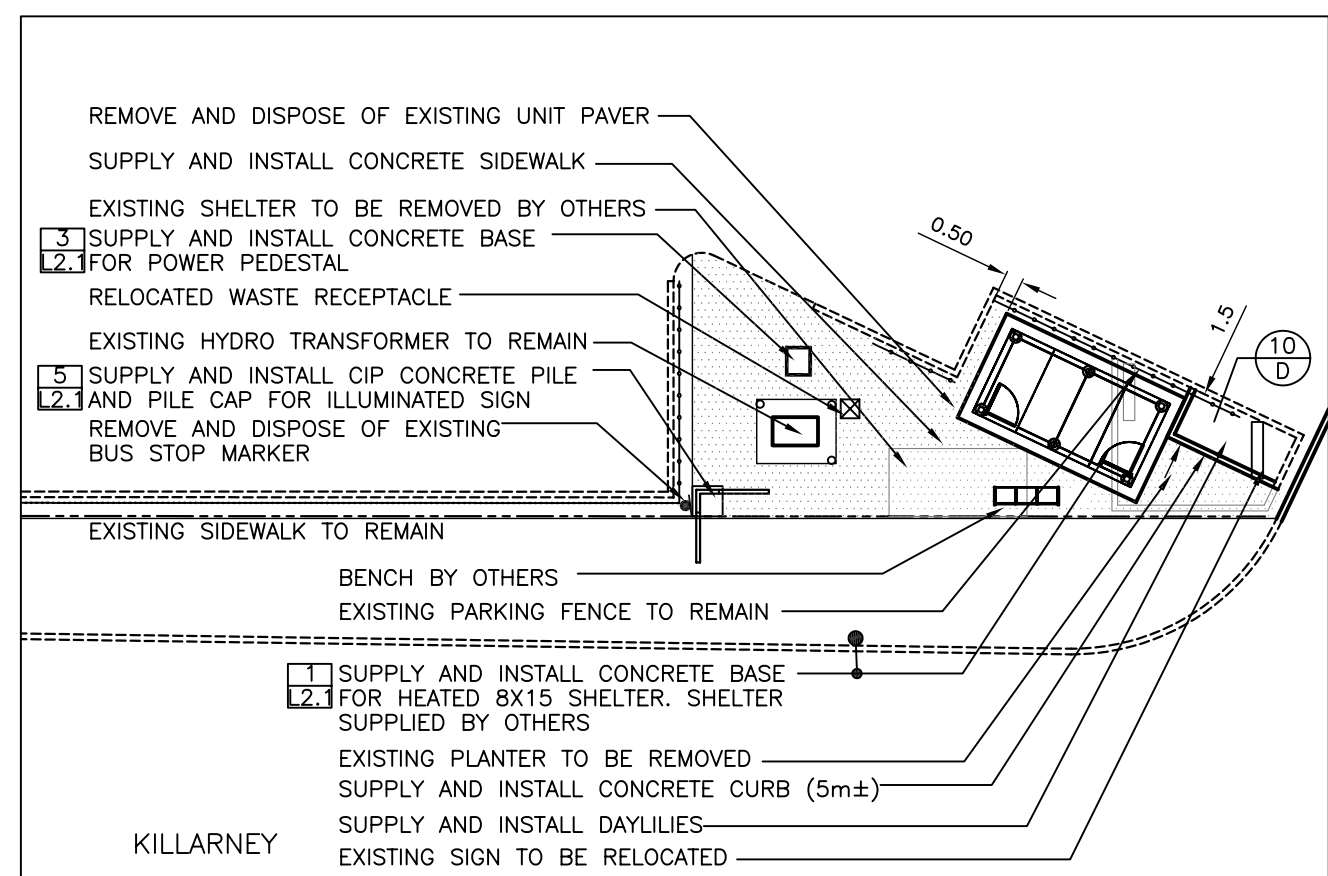
SOUTHBOUND PEMBINA OPPOSITE DARTMOUTH
STOP 60118 DARTMOUTH



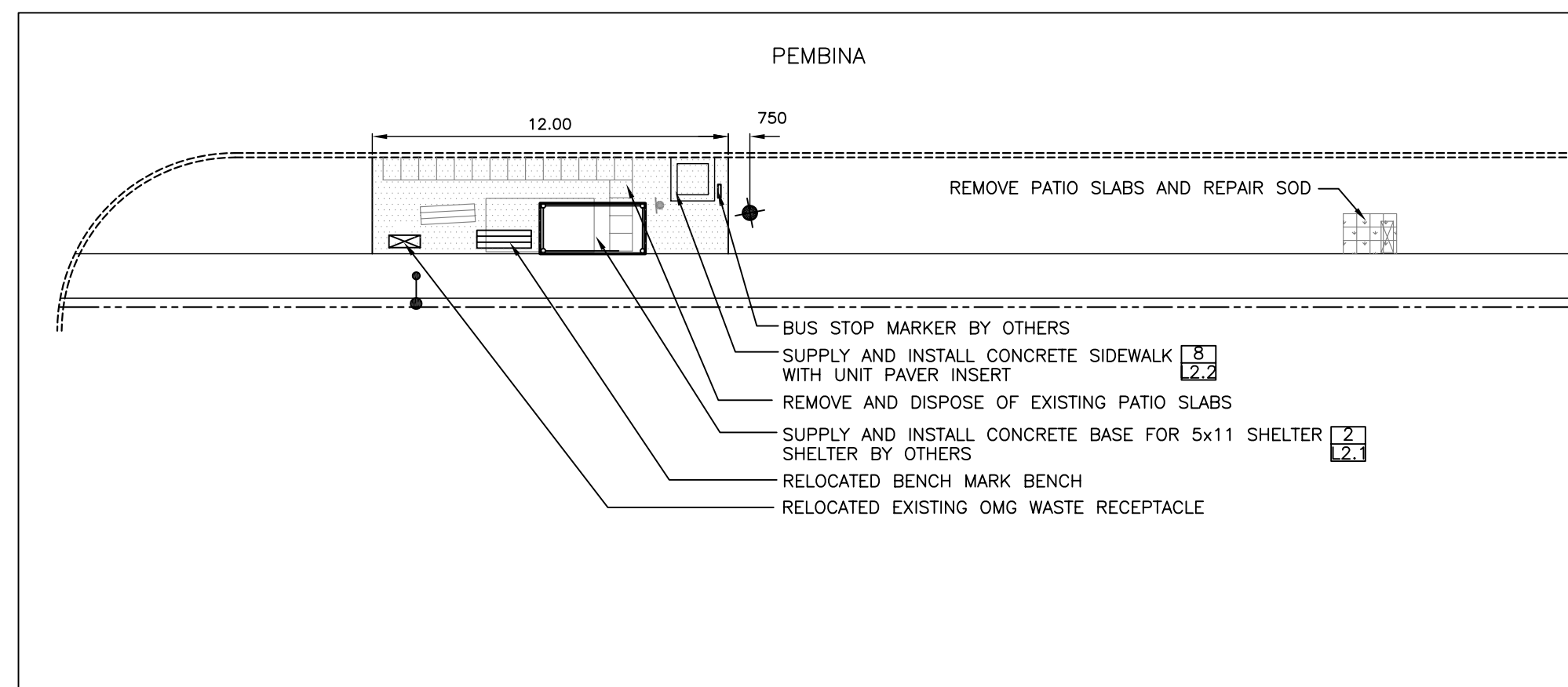
SOUTHBOUND PEMBINA FAR SIDE KIRKBRIDGE
STOP 60034 KIRKBRIDGE



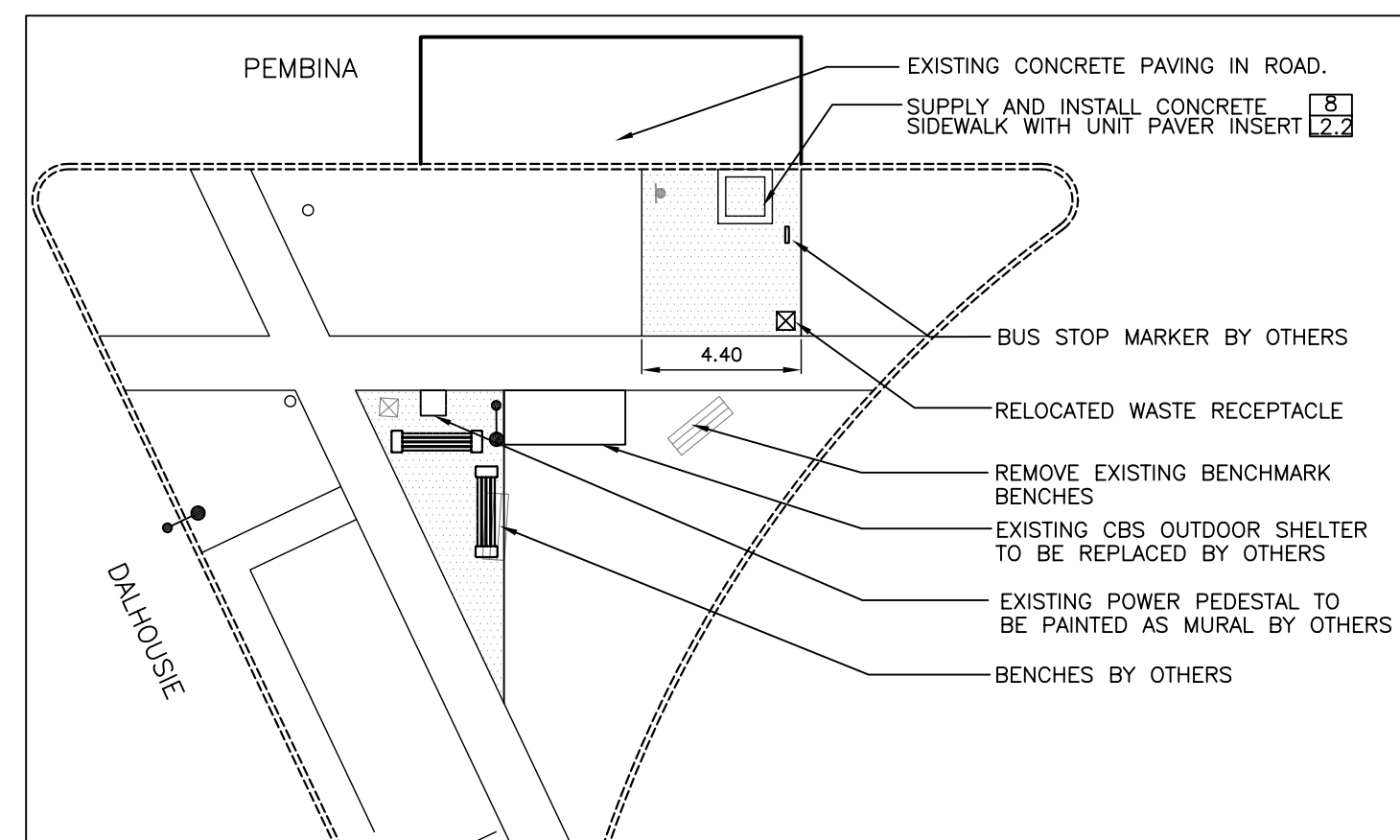
NORTHBOUND PEMBINA NEARSIDE KILLARNEY
STOP 61104 KILLARNEY



WESTBOUND KILLARNEY NEARSIDE PEMBINA
STOP 60064 KILLARNEY AT PEMBINA



NORTHBOUND PEMBINA FAR SIDE KILLARNEY
STOP 60565 KILLARNEY NORTH



NORTHBOUND PEMBINA FAR SIDE DALHOUSIE NORTH
STOP 60069 DALHOUSIE NORTH



KEY	QTY.	COMMON NAME/BOTANICAL NAME	SIZE	REMARKS
DECIDUOUS TREES				
A	11	AMUR MAPLE / ACER GINNALA	60mm CAL. (MULTI STEM)	SPECIMEN, B&B, MACHINE DUG WITH MIN. 10 BRANCHES IN WELL BRANCHED HEAD, 3 STEMS, MIN. HT. 3000mm, BRANCHING HT. 1800mm.
B	5	MANCANA ASH / FRAXINUS MANDSHURICA 'MANCANA'	75mm CAL.	SPECIMEN, B&B, MACHINE DUG WITH MIN. 10 BRANCHES IN WELL BRANCHED HEAD, STRAIGHT TRUNK, MIN. HT. 4500mm, BRANCHING HT. 1800mm.
DECIDUOUS SHRUBS				
C	20	GOLD FLAME SPIREA / SPIRAEA X 'GOLD FLAME'	2 GAL. POT	SPECIMEN, CONTAINER GROWN, WITH MINIMUM 3 STALKS IN WELL BRANCHED PLANT, MIN. 600mm HT.
PERENNIALS				
D	40	DAYLILY / HEMEROCALIS SP. (MIX YELLOW, ORANGE AND WHITE)	100mm POT	SPECIMEN, CONTAINER GROWN, WITH WELL DEVELOPED ROOTS AND GOOD LEAF GROWTH

REFER TO NOTES AND LEGEND ON L1.1



Client
WINNIPEG TRANSIT

Project Title
BUS STOP UPGRADE PROGRAM PHASE 1

Sheet Title
LAYOUT PLANS
3 of 4

Project No. 06-029 Drawing No. L1.3