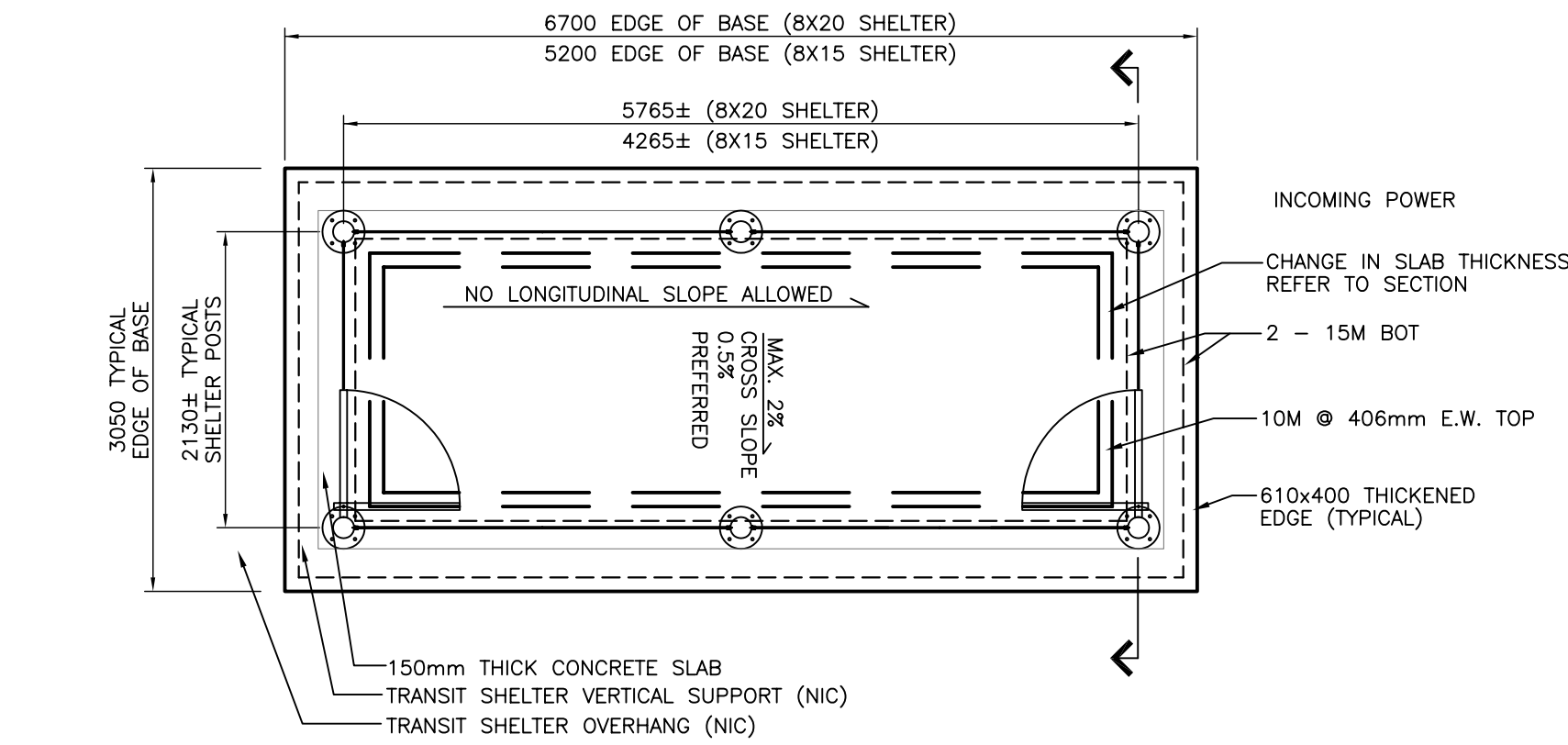


SHELTER BASE SECTION

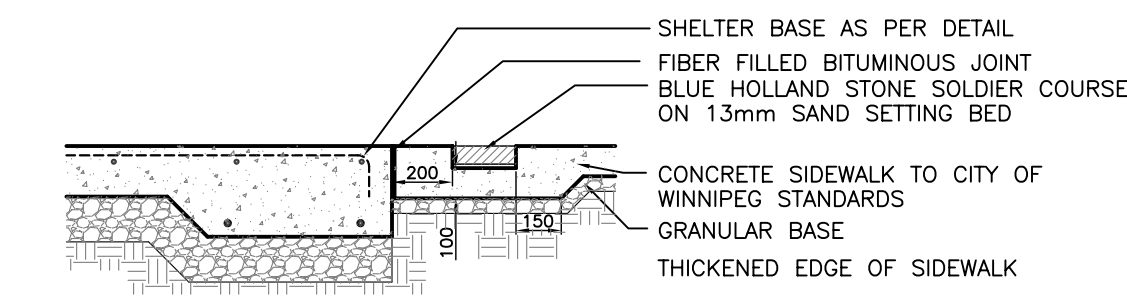


SHELTER BASE PLAN

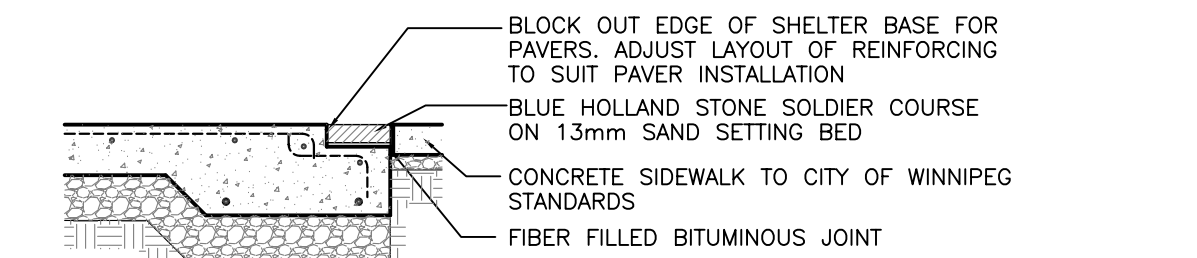
NOTE: CONFIRM FINAL CROSS SLOPE WITH CONTRACT ADMINISTRATOR PRIOR TO LAYOUT CONTRACTOR TO REPORT ANY DISCREPANCIES TO CONTRACT ADMINISTRATOR PRIOR TO LAYOUT.

CONTRACTOR TO VERIFY EXACT DIMENSIONS OF SHELTER PRIOR TO LAYOUT WITH SHELTER MANUFACTURER. CONTRACT ADMINISTRATOR TO SUPPLY CONTACT INFORMATION.

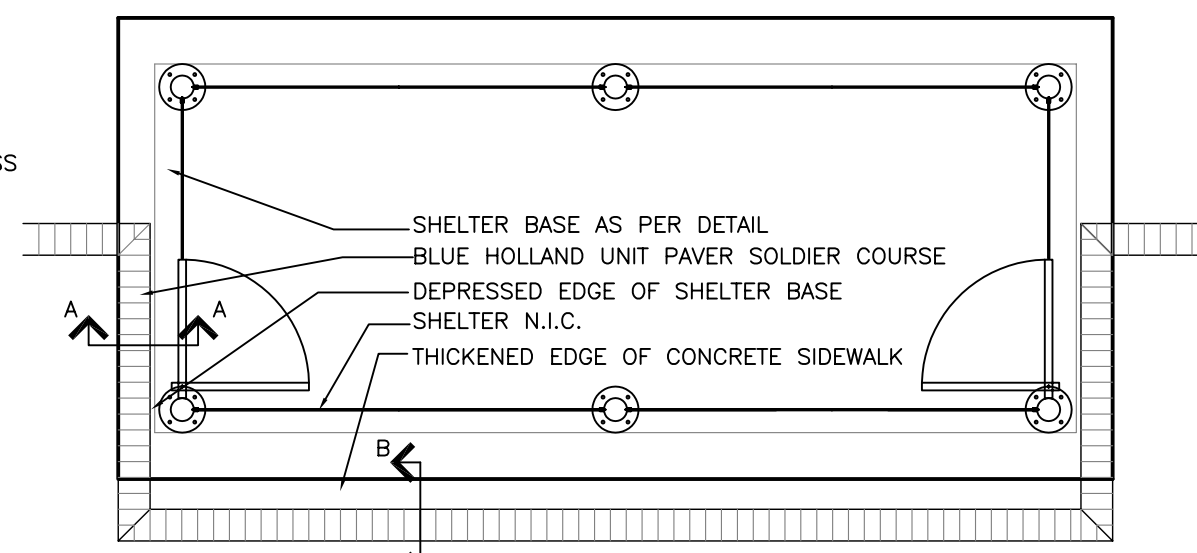
1 C.I.P. SHELTER BASE FOR HEATED SHELTERS
L1.1



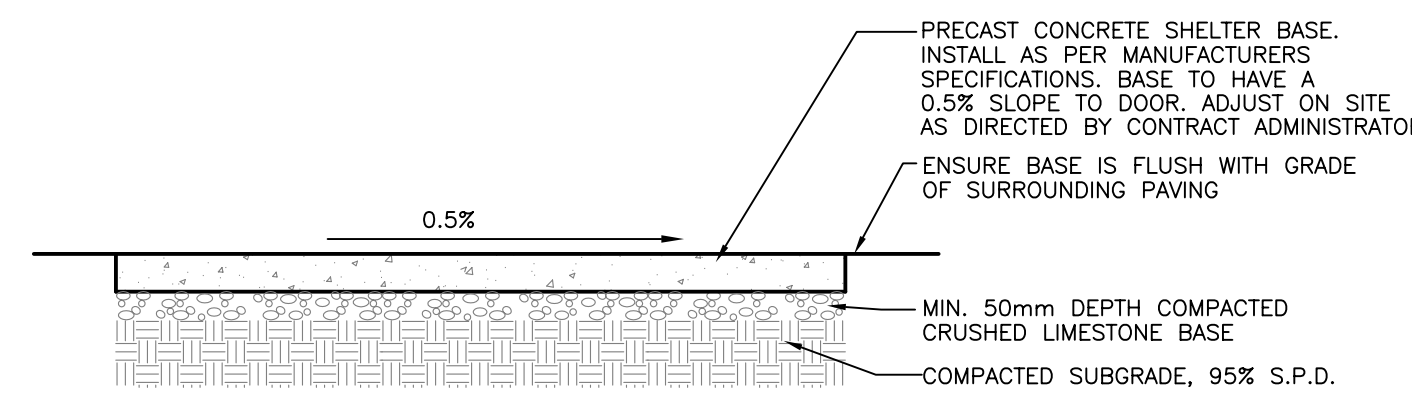
SECTION A-A



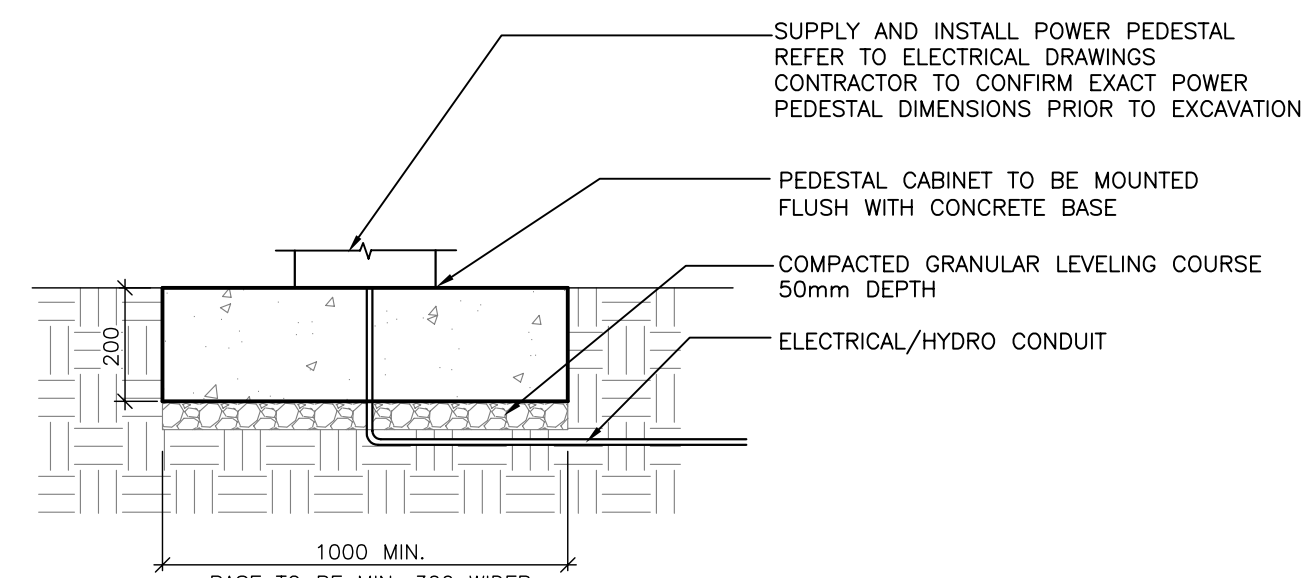
SECTION B-B



PAVING PATTERN AT UNIVERSITY CRESCENT
(FOR INFORMATION ONLY N.I.C.)

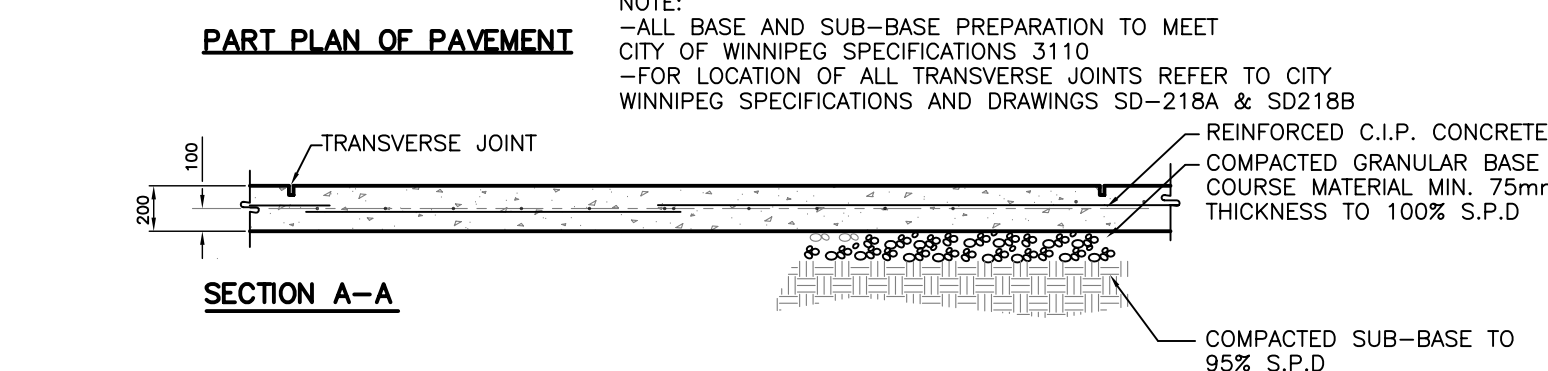
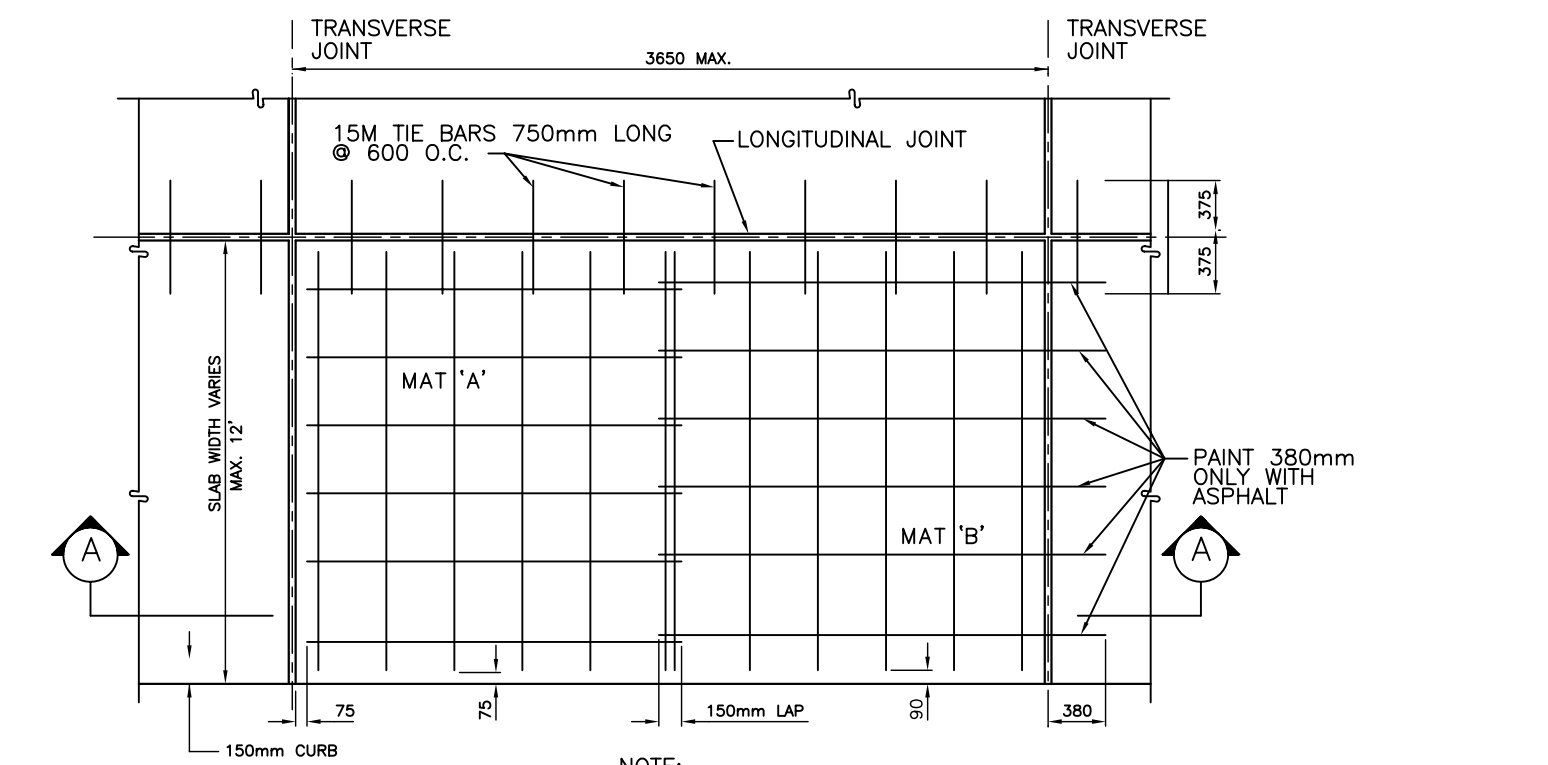


2 PRECAST CONCRETE SHELTER BASE
L1.1



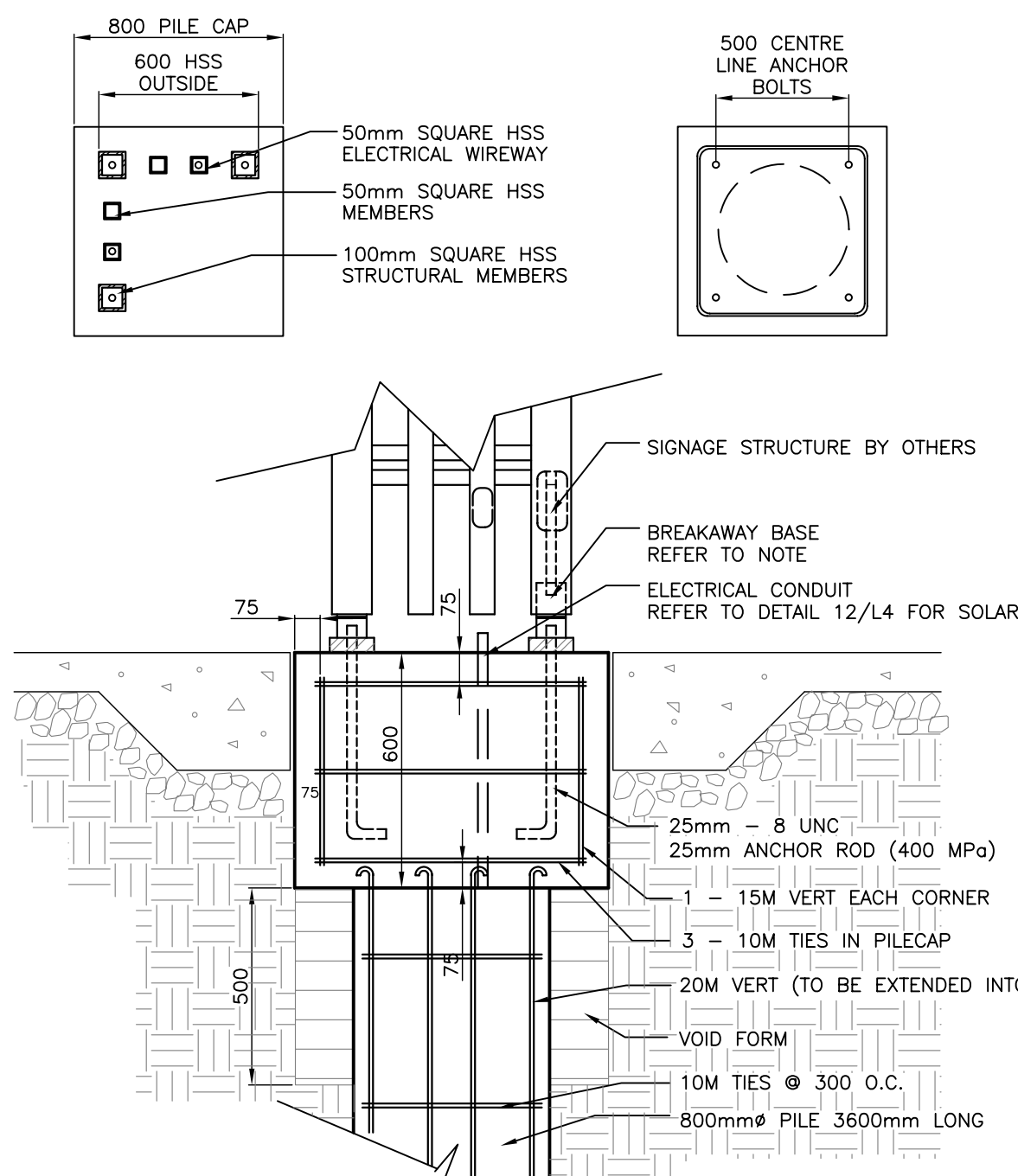
NOTE: EXACT LOCATION OF PEDESTAL TO BE CONFIRMED ON SITE BY WINNIPEG TRANSIT AND CONTRACT ADMINISTRATOR
CONTRACTOR TO COORDINATE WITH LAND OWNERS & WINNIPEG TRANSIT RE. CONDUIT LOCATIONS
GROUND ROD TO BE INSTALLED BY CONTRACTOR SIZE AND LOCATION TO BE CONFIRMED BY PEDESTAL MANUFACTURER

3 POWER PEDESTAL BASE
L1.1 N.T.S.



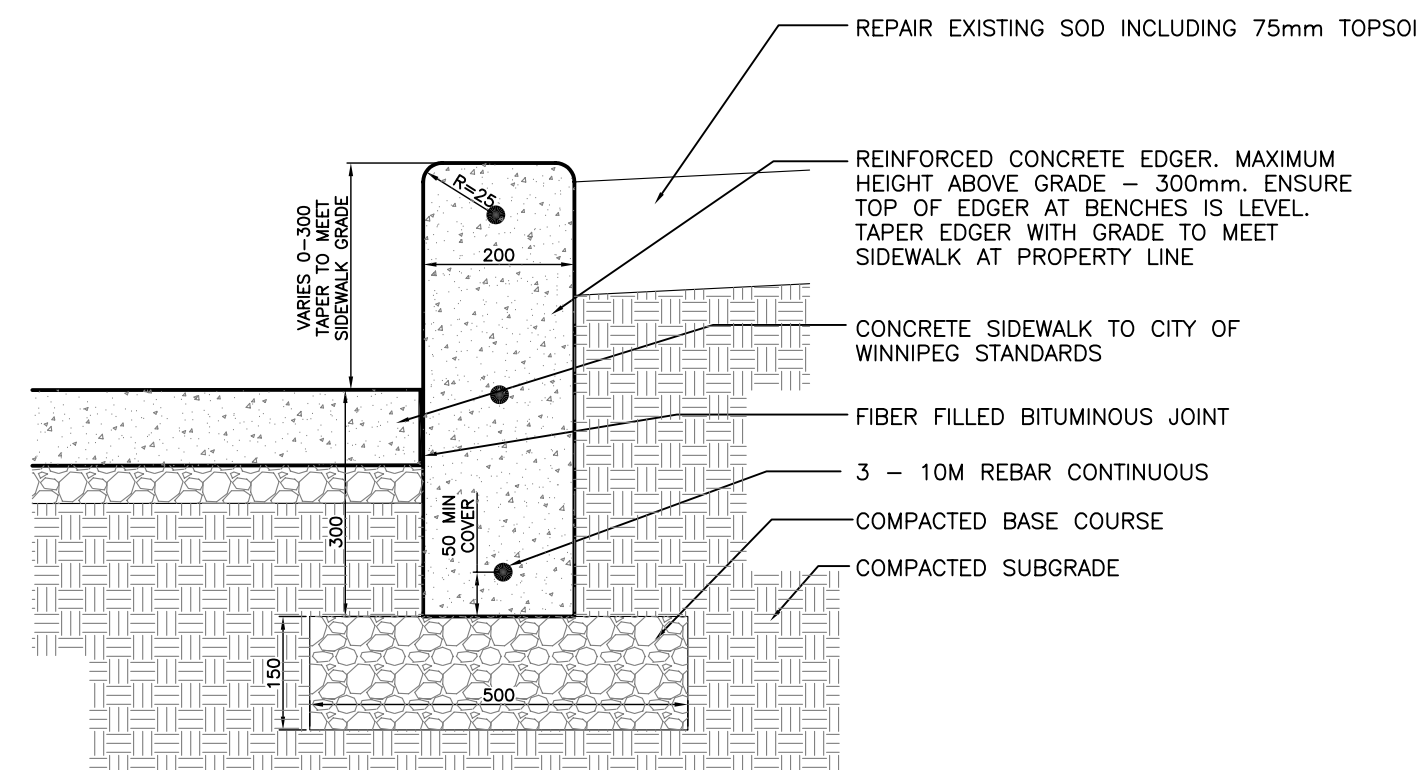
ALL JOINTS TO BE AS PER CITY OF WINNIPEG SPECIFICATIONS
CONTRACTOR TO LAYOUT ALL JOINTS FOR REVIEW AND APPROVAL BY CONTRACT ADMINISTRATOR PRIOR TO CONSTRUCTION

4 REINFORCED CONCRETE PAVING
L1.1 N.T.S.

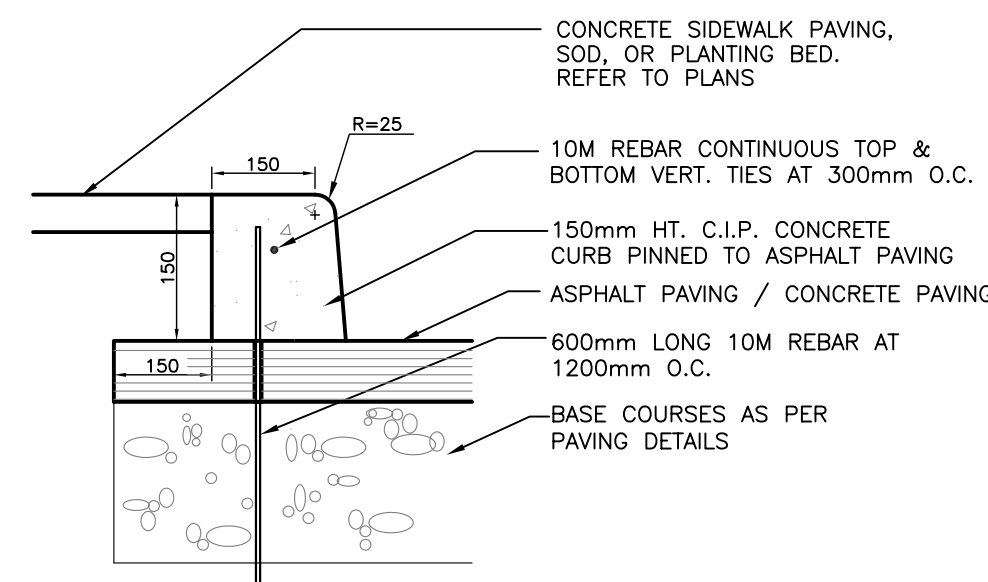


CONTRACTOR TO SUPPLY AND INSTALL ANCHOR BOLTS FOR SIGNS AS PART OF THE PILE CAP
INSTALLATION. SIZE AND MATERIAL TO BE COORDINATED WITH SIGN MANUFACTURER.

5 CONCRETE PILE AND PILE CAP FOR ILLUMINATED SIGNAGE STRUCTURE
L1.1 N.T.S.



6 CONCRETE EDGER
L1.2



NOTES:
1. PROVIDE EXPANSION JOINTS @ 25' (7.62m) O.C. MAX. AND AT CURVES, TANGENTS, AND CORNERS
2. BASE OF CURB TO REST ON ASPHALT PAVING
3. SACK FINISH EXPOSED SURFACES
4. RUN BARS CONTINUOUS THROUGH EXPANSION JOINTS

7 C.I.P. PINNED CONCRETE CURB
L1.1

- GENERAL CONCRETE NOTES
1. ALL DIMENSIONS SHALL BE CHECKED AND VERIFIED PRIOR TO COMMENCING CONSTRUCTION.
 2. CONFIRM THE LOCATION OF ALL SUBGRADE SERVICES PRIOR TO COMMENCING SITE WORK.
 3. EXCAVATE ALL TOPSOIL, ORGANIC MATERIAL AND LOOSE OR UNSUITABLE FILL TO THE APPROVAL OF THE CONTRACT ADMINISTRATOR.
 4. EXCAVATE BELOW SLABS ON FILL TO PROVIDE A MINIMUM OF 6" OF GRANULAR FILL SHALL BE COMPACTED TO 95% MODIFIED PROCTOR DENSITY.
 5. CONSTRUCTION JOINT LOCATIONS ARE TO BE APPROVED BY THE CONTRACT ADMINISTRATOR.
- REINFORCING NOTES
7. ALL REINFORCING BARS SHALL BE DEFORMED BARS WITH A MINIMUM SPECIFIED YIELD STRENGTH 400MPa FOR 20M BARS AND 300MPa FOR 15M AND 10M BARS IN ACCORDANCE WITH CAN 630-18 M82.
 8. COVER TO REINFORCING: SLABS 1" CLEAR TOP AND BOTTOM
 9. BEFORE PLACING ENSURE REINFORCING IS CLEAN, FREE OF LOOSE SCALE DIRT OR OTHER FOREIGN COATING WHICH WOULD REDUCE THE BOND TO CONCRETE.
 10. SHOP DRAWINGS SHALL BE SUBMITTED WHICH CLEARLY INDICATE BAR SIZES, SPACINGS, LOCATIONS AND QUANTITIES OF REINFORCING STEEL AND WIRE FABRIC, BENDING AND CUTTING SCHEDULES, AND SUPPORTING AND SPACING DEVICES FOR REVIEW PRIOR TO FABRICATION OF THE REINFORCING STEEL. DETAIL IN ACCORDANCE WITH THE LATEST ACI DETAILING MANUAL.
 11. SEPIAS OF STRUCTURAL DRAWINGS WILL NOT BE ACCEPTED FOR USE AS SHOP DRAWINGS.

- CONCRETE NOTES
12. ALL CONCRETE WORK SHALL BE IN ACCORDANCE WITH CAN3-A23.1-M90 - CONCRETE MATERIALS AND METHODS OF CONCRETE CONSTRUCTION.
 13. PROPORTION NORMAL DENSITY CONCRETE IN ACCORDANCE WITH CON-A23.1-M90. REFER TO SPECIFICATION FOR DESIGN MIXES.
 14. CONSTRUCT FORMWORK, SHORING AND BRACING TO MEET DESIGN, CODE AND CAN3A23.1-M90 REQUIREMENTS, ACCURATELY, SO THAT RESULTANT FINISHED CONCRETE CONFORMS TO SHAPES, LINES AND DIMENSIONS INDICATED ON THE DRAWINGS.
 15. CONSTRUCTION JOINTS, POUR SCHEDULING AND WORK PROCEDURES SHALL BE DISCUSSED WITH THE CONSULTANT PRIOR TO COMMENCING CONSTRUCTION.
 16. FOR COLD WEATHER CONCRETING ALL ICE, SNOW AND FROST SHALL BE REMOVED FROM FORMWORK AND THE TEMPERATURES OF ALL CONTACT SURFACES SHALL BE RAISED ABOVE 10°C FOR 24 HOURS PRIOR TO CASTING CONCRETE. CONCRETE SHALL BE NOT LESS THAN 20°C NOR MORE THAN 30°C FOR 3 DAYS AND NOT LESS THAN 5°C FOR AN ADDITIONAL 4 DAYS.
 17. NOTIFY THE CONSULTANT 48 HOURS PRIOR TO POURING CONCRETE.
 18. THREE CONCRETE TEST CYLINDERS AND ONE SLUMP TEST SHALL BE TAKEN FOR EVERY 75 CUBIC METRES OF EACH CLASS OF CONCRETE PLACED OR FOR EACH DAY OF CONCRETE PLACEMENT IF THE LATTER IS LESS THAN 75 CUBIC METRES. TESTING SHALL BE PERFORMED IN ACCORDANCE WITH CAN3-A23.1-M90.

No.	Revisions	Date	By
Date Scale			
12-07-07		AS NOTED	
Designed By	Drawn By	Checked By	
JW	JW	SR	



Client
WINNIPEG TRANSIT
Project Title
BUS STOP UPGRADE PROGRAM PHASE 1

Sheet Title
DETAILS

Project No. 06-029 Drawing No. L2.1