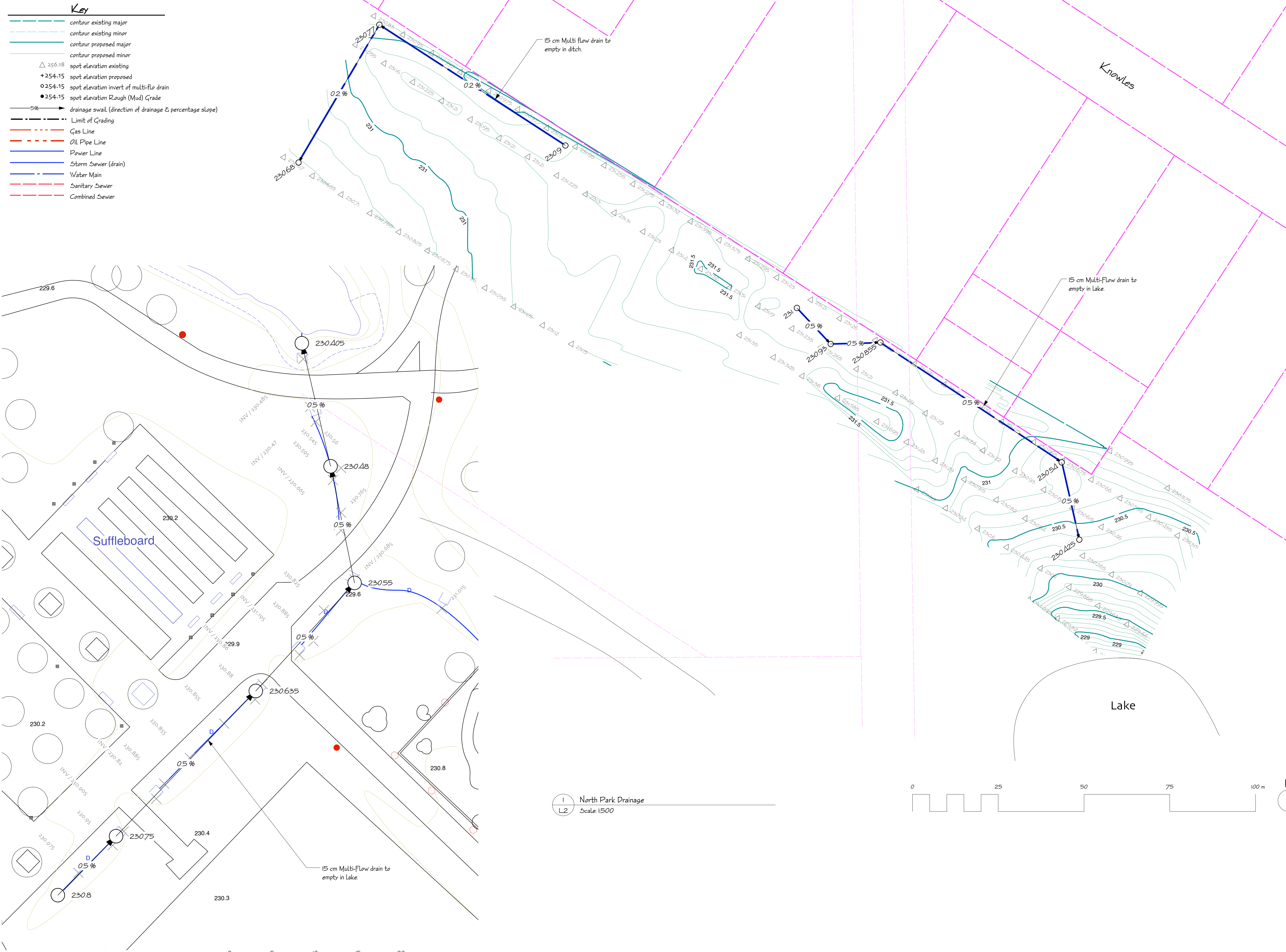


- Key**
- contour existing major
 - contour existing minor
 - contour proposed major
 - contour proposed minor
 - △ 256.18 spot elevation existing
 - +254.15 spot elevation proposed
 - 254.15 spot elevation invert of multi-flō drain
 - 254.15 spot elevation Rough (Mud) Grade
 - 5% drainage swail (direction of drainage & percentage slope)
 - Limit of Grading
 - Gas Line
 - Oil Pipe Line
 - Power Line
 - Storm Sewer (drain)
 - Water Main
 - Sanitary Sewer
 - Combined Sewer

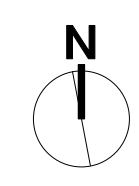
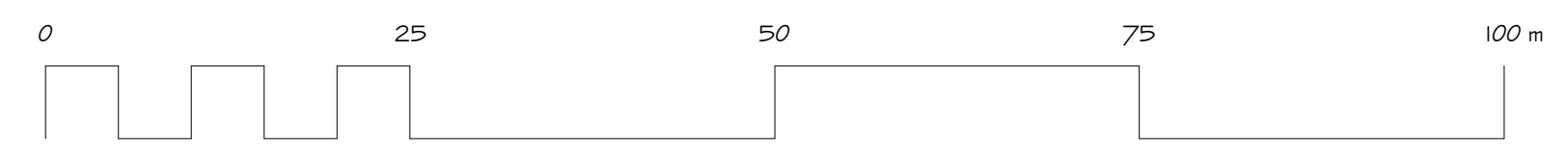
- General Notes**
1. All dimensions are in meters unless otherwise noted
 2. All elevations are Geoidic and in Meters
 3. All existing trees, sidewalks, curbs, catch basins, culverts, survey markers, to remain are to be protected during construction. Any damage to them is to be made good by the Contractor. Maintain positive drainage into all catch basins and curb inlets.
 4. All work is to be warranted for a period of not less than 1 year
 5. Contractor is to limit operations to the area within the area of work shown on the drawing. Should areas outside of this limit be damaged during the course of construction, Contractor is to make good the damage at his own expense
 6. Contractor is to obtain location of all utilities prior to construction. If using power equipment to excavate contractor must notify Hydro and Gas and telephone utilities and take steps to avoid damaging their installations.
 7. Contractor is to protect any existing trees/shrubs not scheduled for demolition/removal.
 8. Confirm grades with contract administrator after initial grade staking and before proceeding with grading operations. Any deviation from the stated slopes is to be approved by the landscape architect prior to construction.
 9. Contractor is advised that existing grades are given as information only and should be verified on site. Any discrepancies are to be reported to the Landscape Architect.
 10. Unless Directed otherwise, All grades shown are FINAL GRADES. Rough grading operations should establish a 'mud' grade sufficiently below finish grade to allow for surface materials. Grading contractor is to establish rough grade within +/- 25 cm.
 11. Spot elevations are to govern over contour information
 12. Layout is to be approved by Contract Administrator prior to any construction or demolition/removals.
 13. Where demolition/removal of items is called for all items removed from the Site are to be disposed of in a safe and legal manner.



1. This drawing shall not be used for construction unless signed and sealed by Landscape Architect.
2. Variations and modifications to the work shown will not be allowed without prior written consent of Landscape Architect.
3. Drawing and Specifications as instruments of service, are the property of the Landscape Architect. The copyright is reserved in the name of the Landscape Architect. No reproduction may be made without the prior written consent of the Landscape Architect.
4. Contractors/bidders are hereby granted a limited licence to reproduce these drawings for the purposes of bidding. Such reproductions are not to be used for construction.

2 Harbour View Drain Tile
L2 Scale: 1:200

1 North Park Drainage
L2 Scale: 1:500



07/05/06 For Bid Opportunity

NO.	DATE	ISSUE NOTES



PROJECT TITLE
Kilcona Park/Gateway CC
Athletic Fields &
Drainage Improvements

DRAWING TITLE
Drainage Improvements