

BISON DRIVE

**PRELIMINARY
DRAWING ONLY**
NOT TO BE USED FOR CONSTRUCTION
(REMOVE WHEN DRAWING IS FINAL)

APEGM
Certificate of Authorization
Wardrop Engineering Inc.
No. 195 Expiry: April 30, 2007

150 WM	WATERMAIN	150 WM	ANCHOR	TRAFFIC SIGNAL
400 FM	FEEDERMAIN	400 FM	TREE	GAS
300 LDS	LAND DRAINAGE SEWER	300 LDS	LEGAL DIMENSION	HYDRO
250 WWS	WASTEWATER SEWER	250 WWS	SURVEY BAR	MTS
300 CS	COMBINED SEWER	300 CS	MANHOLE	SIDEWALK
200 FCM	FORCEMAIN	200 FCM	CATCHBASIN	CURB
	JUNCTIONS		CURB INLET	ASPHALT
	HYDRANT		ADDRESS	CONCRETE REPAIRS
	VALVE		HYDRO POLE	MILLING
	CURB STOP		LIGHT STANDARD	ELEVATION
EXISTING	LEGEND-PLAN	PROPOSED	EXISTING	LEGEND-PLAN

LOCATION APPROVED UNDERGROUND STRUCTURES

SUPV. U/G STRUCTURES DATE COMMITTEE

NOTE: LOCATION OF UNDERGROUND STRUCTURES AS SHOWN ARE BASED ON THE BEST INFORMATION AVAILABLE. BUT NO GUARANTEE IS GIVEN THAT ALL EXISTING UTILITIES ARE SHOWN OR THAT THE GIVEN LOCATIONS ARE EXACT. CONFIRMATION OF EXISTENCE AND EXACT LOCATION OF ALL SERVICES MUST BE OBTAINED FROM THE INDIVIDUAL UTILITIES BEFORE PROCEEDING WITH CONSTRUCTION.

B.M. ELEV.	F.B. 2127
00	ISSUED FOR TENDER 06.07.26
A	ISSUED FOR APPROVAL 06.07.25
NO.	REVISIONS

WARDROP Engineering Inc.

DESIGNED BY PJK CHECKED BY

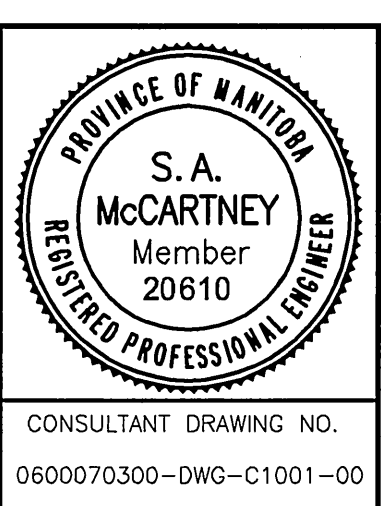
DRAWN BY GMD APPROVED BY

HOR. SCALE: 1 : 250

VERTICAL: 1 : 10

RELEASED FOR CONSTRUCTION

DATE 06.04.26



THE CITY OF WINNIPEG
PUBLIC WORKS DEPARTMENT
ENGINEERING DIVISION

PAVEMENT REHABILITATION

BISON DRIVE
210m EAST OF WAVERLEY STREET TO
175m WEST OF MARKHAM ROAD

CITY DRAWING NUMBER	P-3271
SHEET OF	1 OF 6
C1001	