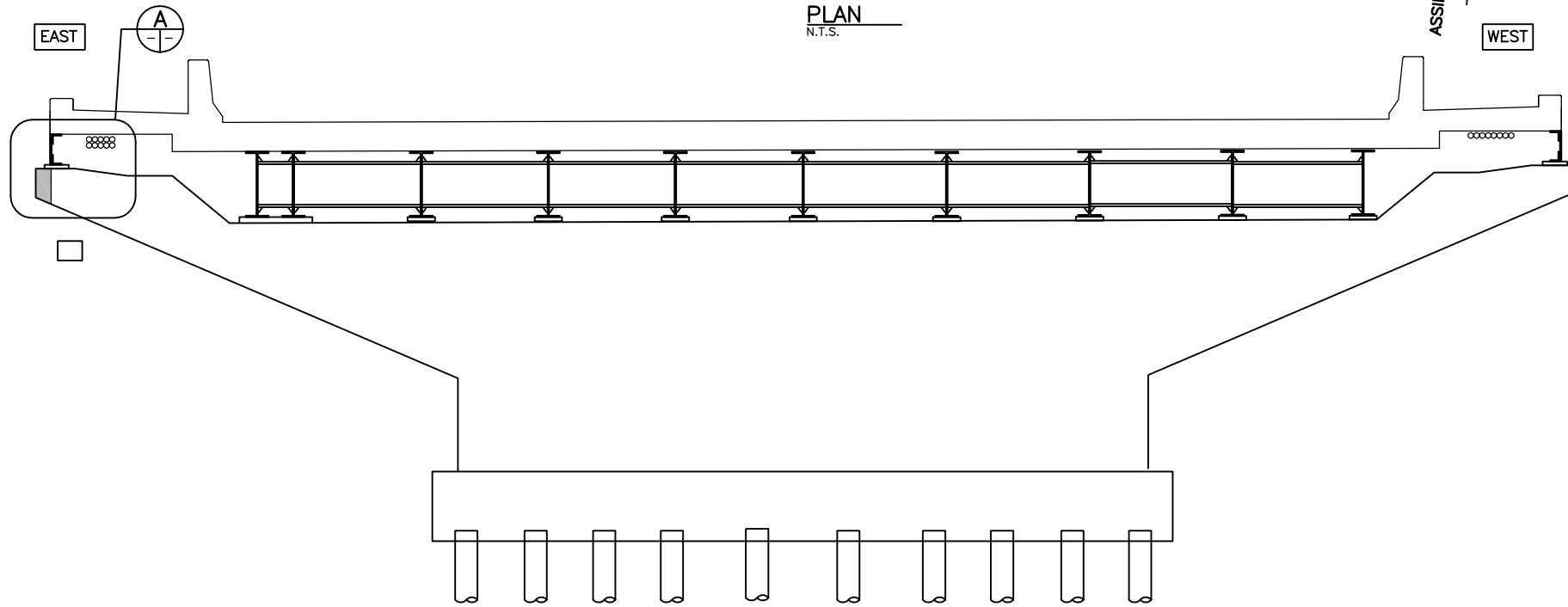
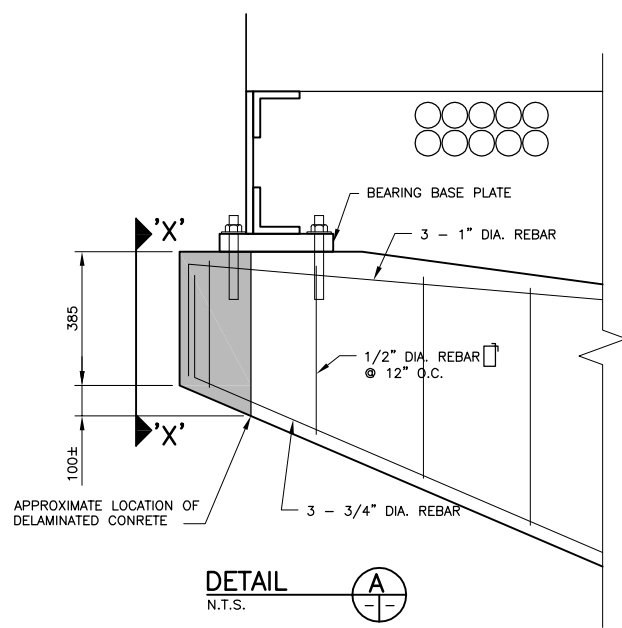


LOCATION PLAN

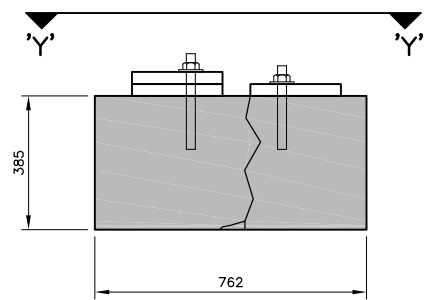


ELEVATION - PIER 6
(LOOKING SOUTH)

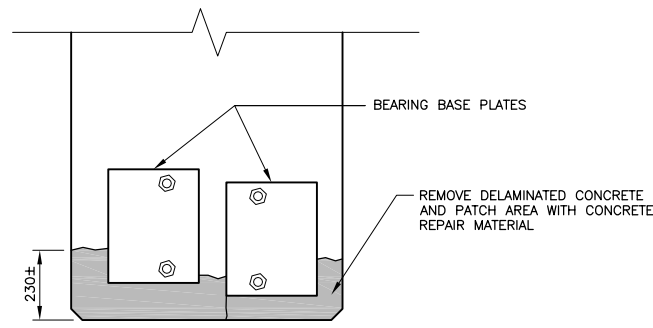
SECTION 1
N.T.S.



DETAIL
N.T.S.



ELEVATION
VIEW 'X'-'X'
N.T.S.



PLAN
VIEW 'Y'-'Y'
N.T.S.

NOTES:

1. REMOVE ALL CONCRETE FROM THE DESIGNATED REPAIR AREAS TO THE DEPTH SHOWN IN THE DRAWING. SAWCUT PERIMETER TO A MINIMUM DEPTH OF 25 MM. THE SPECIFIED DEPTH OF REMOVAL SHALL ACHIEVE A 25 MM CLEAR DISTANCE BETWEEN THE EXISTING REINFORCING STEEL AND THE PREPARED CONCRETE SURFACE TO ALLOW THE BARS TO BE FULLY CLEANED AND NEW CONCRETE COMPLETELY ENCAPSULATE THEM. IF THIS CANNOT BE ACHIEVED WITHIN THE DESIGNATED REPAIR DEPTH, THE CONTRACT ADMINISTRATOR MAY DIRECT ADDITIONAL CONCRETE REMOVAL AS EXTRA WORK.
2. AFTER COMPLETION OF CONCRETE REMOVALS, STEEL SURFACES SHALL BE THOROUGHLY CLEANED BY GRITBLASTING. ALL GRITBLAST MATERIALS SHALL BE BLOWN OUT OF THE REPAIR AREA AND REMOVED OFF SITE.
3. PLACE CONCRETE. ALLOW CONCRETE TO CURE IN FORMS IF FORMS ARE USED FOR MINIMUM OF 7 DAYS.
4. CONCRETE REPAIR MATERIAL MAY BE EITHER ONE OR A COMBINATION OF CONCRETE REPAIR MORTARS, CONVENTIONAL CONCRETE, OR SELF-COMPACTING CONCRETE. REFER TO SPECIFICATION FOR DETAILS.



B.M. ELEV.	DESIGNED BY: M.R.D.
	DRAWN BY: M.R.D.
	CHECKED BY: R.A.W.
	REVIEWED BY: R.A.W.
	SCALE: HORZ. AS SHOWN VERT.
	DATE: JULY 2006
1 ISSUED FOR TENDER 06/07/11 MRD	AUTHORIZED BY: DATE:
0 ISSUED FOR CITY REVIEW 06/07/11 MRD	CITY BRIDGE ENGINEER
NO. REVISIONS	DATE BY

ENGINEER'S SEAL

DILLON CONSULTING

THE CITY OF WINNIPEG
 PUBLIC WORKS DEPARTMENT
 2006 BRIDGE MAINTENANCE
 MIDTOWN BRIDGE
 CONCRETE REPAIRS
 PIER 6

CITY DRAWING NUMBER
B114-06-01
 SHEET 1 OF 1
 BID OPP NO.
464-2006

CONSULTANT PROJECT NO.
06-5919-1002