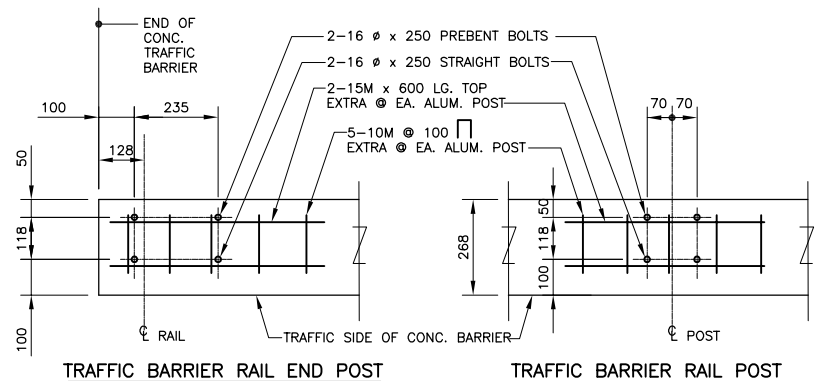


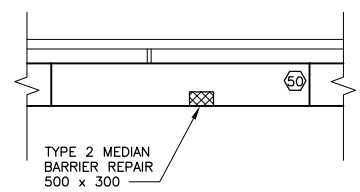
SOUTH



TYPICAL ANCHOR BOLT LAYOUT FOR ALUMINUM RAIL POST  
1: 10

NORTHBOUND CURB LANE BARRIER ELEVATION  
1 : 75 (LOOKING EAST)

REPAIR LEGEND	APPROX. AREA
TYPE 1 REPAIR	276 L.M.
TYPE 2 REPAIR	3.0 SQ.M.
BARRIER LOCATION NO.	



NORTHBOUND MEDIAN LANE BARRIER 50 ELEVATION  
1 : 75 (LOOKING WEST)

NOTES:

1. REPAIRS PREDOMINATELY ALONG NORTHBOUND CURB LANE BARRIER. NORTHBOUND MEDIAN LANE REPAIRS AT BARRIER 50.
2. DIMENSIONS SHOWN OF REPAIR AREAS ARE APPROXIMATE. LAYOUT ACTUAL REPAIR AREAS WITH CONTRACT ADMINISTRATOR IN FIELD.
3. SEE SPECIFICATION FOR REPAIR PREPARATION & CONCRETE REPLACEMENT DETAILS.
4. PROVIDE MINIMUM 20MM DEEP SAWCUT AROUND ALL REPAIR AREAS.

B.M. ELEV. 1 ISSUED FOR TENDER 06/07/11 MRD 0 ISSUED FOR CITY REVIEW 06/07/11 MRD NO. REVISIONS DATE BY CITY BRIDGE ENGINEER	DESIGNED BY: M.R.D. DRAWN BY: M.R.D. CHECKED BY: R.A.W. REVIEWED BY: R.A.W. SCALE: HORIZ. AS SHOWN VERT. JULY 2006 DATE:			THE CITY OF WINNIPEG PUBLIC WORKS DEPARTMENT 2006 BRIDGE MAINTENANCE ST. VITAL BRIDGE CONCRETE REPAIRS	CITY DRAWING NUMBER B116-06-02 SHEET 2 OF 2
	AUTHORIZED BY: DATE: CONSULTANT PROJECT NO. 06-5919-1001				DETAILS 2 OF 2 BID OPP NO. 464-2006