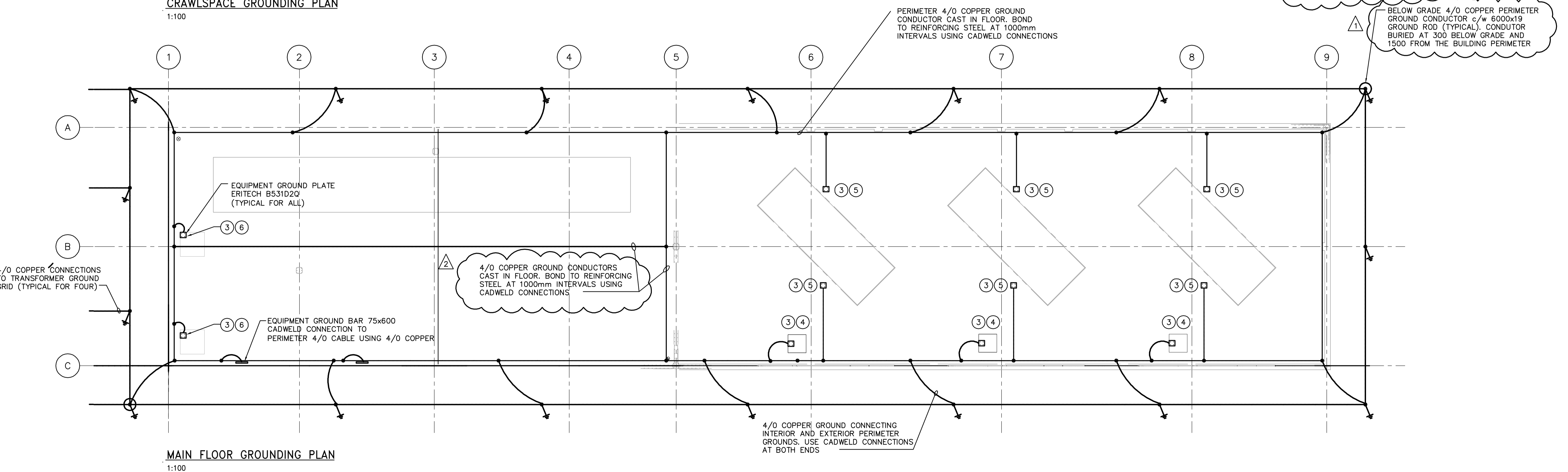


CRAWLSPACE GROUNDING PLAN
1:100



MAIN FLOOR GROUNDING PLAN
1:100

- DRAWING NOTES**
1. CONNECT SWITCHGEAR SWGR-E100A AND SWGR-E100B AT BOTH ENDS TO EQUIPMENT GROUND BARS USING 4/0 COPPER AND TWO HOLE LUGS.
 2. INSTALL 4/0 TIN PLATED COPPER GROUND CABLES IN ALL ABLE TRAYS. BOND EACH TRAY SECTION TO CABLE. BOND CABLE TO MINIMUM TWO EQUIPMENT GROUND BARS.
 3. CONNECT EQUIPMENT GROUND PLATES TO PERIMETER GROUND CONDUCTOR AND REINFORCING STEEL USING 4/0 COPPER AND CADWELD CONNECTIONS.
 4. GROUND NEUTRAL GROUND RESISTOR (NGR) TO EQUIPMENT GROUNDPLATE USING 4/0 COPPER CABLE c/w TWO HOLE COPPER LUGS.
 5. BOND GENERATOR FRAME TO EQUIPMENT GROUND PLATE USING 4/0 COPPER CABLE c/w TWO HOLE COPPER LUGS.
 6. GROUND TRANSFORMER NEUTRAL TO EQUIPMENT GROUND PLATE USING 4/0 COPPER CABLE c/w TWO HOLE COPPER LUGS.
 7. PROVIDE BONDING/GROUNDING IN ACCORDANCE WITH THE MANITOBA ELECTRICAL CODE FOR ALL EQUIPMENT NOT SHOWN.
 8. ALL METAL BODIES WITHIN ELECTRICAL BUILDING SHALL BE BONDED IN ACCORDANCE WITH ALL APPLICABLE CODES.

APECM
Certificate of Authorization
Earth Tech Canada Inc.
No. 730 Expiry: April 30, 2007

NO.	REVISIONS	DATE	BY
02	498-2006 ADDENDUM 4	06/10/10	ERC
01	498-2006 ADDENDUM 3	06/09/29	ERC
00	ISSUED FOR TENDER	06/08/30	ERC

CH2M HILL
Frederickson Cooper ARCHITECTS

DESIGNED BY: BLM
CHECKED BY: PS
DRAWN BY: ERC
APPROVED BY: AHL
SCALE: AS SHOWN
RELEASED FOR CONSTRUCTION BY: R. SOROKOWSKI
DATE: 2006/07/24
DATE: 2006/08/30

ENGINEER'S SEAL
ORIGINAL SIGNED BY: B.L. MOORE
DATE: 2006/08/30
CONSULTANT DRAWING NO. WG-E0103

THE CITY OF WINNIPEG
WATER AND WASTE DEPARTMENT
ENGINEERING DIVISION

WATER TREATMENT PLANT
STANDBY POWER GENERATOR
GENERATOR BUILDING

ELECTRICAL
CRAWLSPACE AND MAIN FLOOR GROUNDING PLANS

CITY FILE NUMBER
SHEET OF
CITY DRAWING NUMBER
1-0601G-A-E0103-001-02D