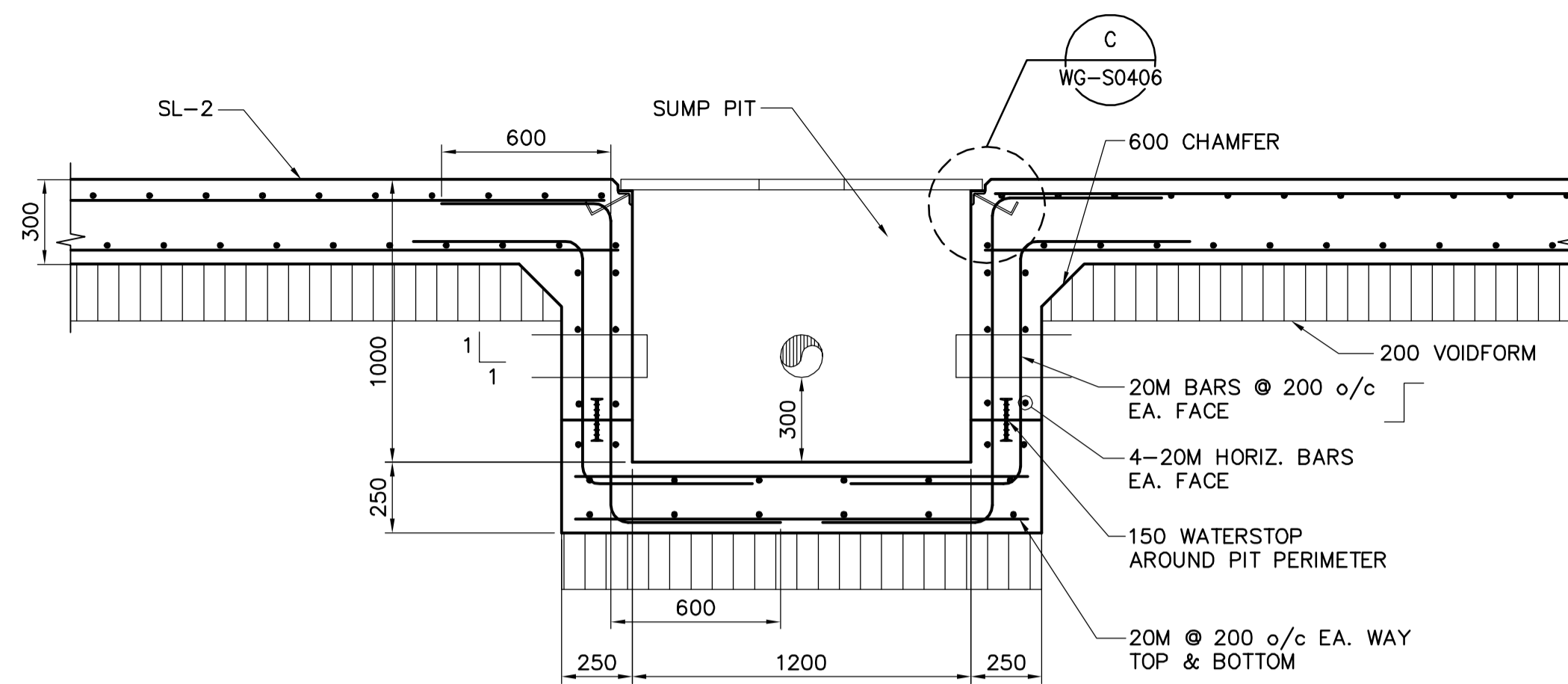
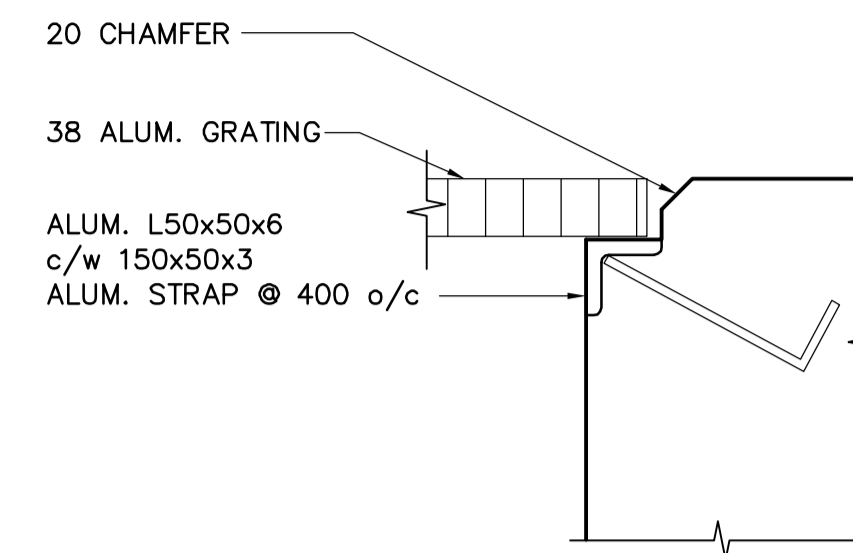


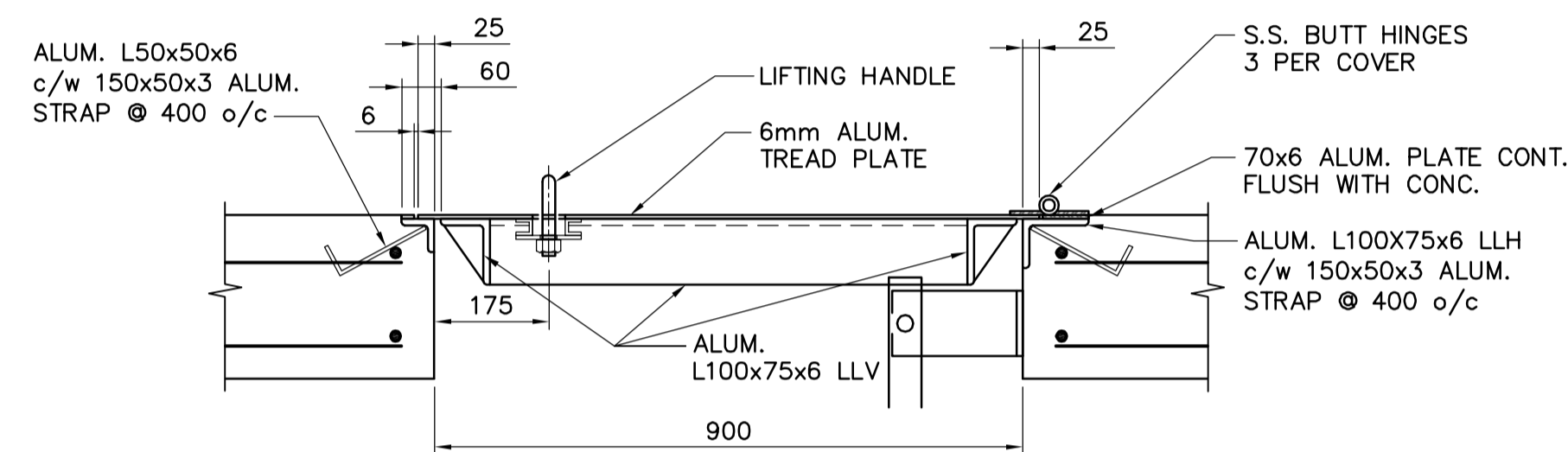
A PLAN DETAIL
WG-S0100 1:10



1 SECTION
WG-S0406 1:20

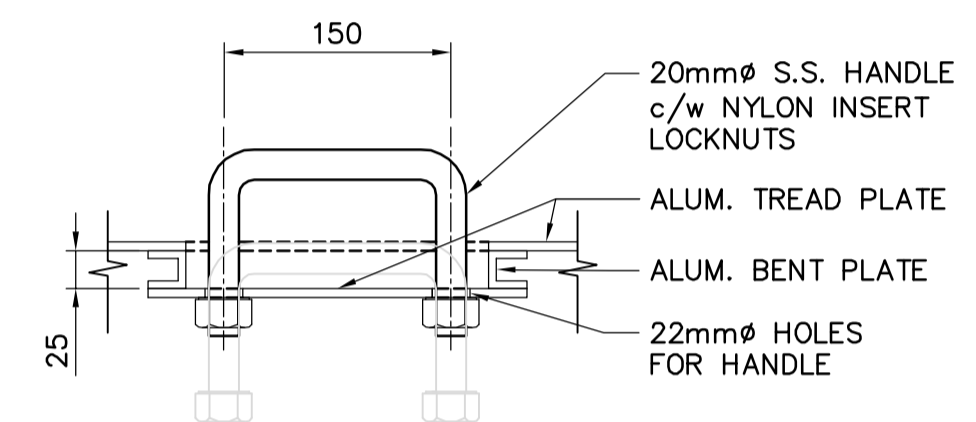


C DETAIL
WG-S0406 1:5

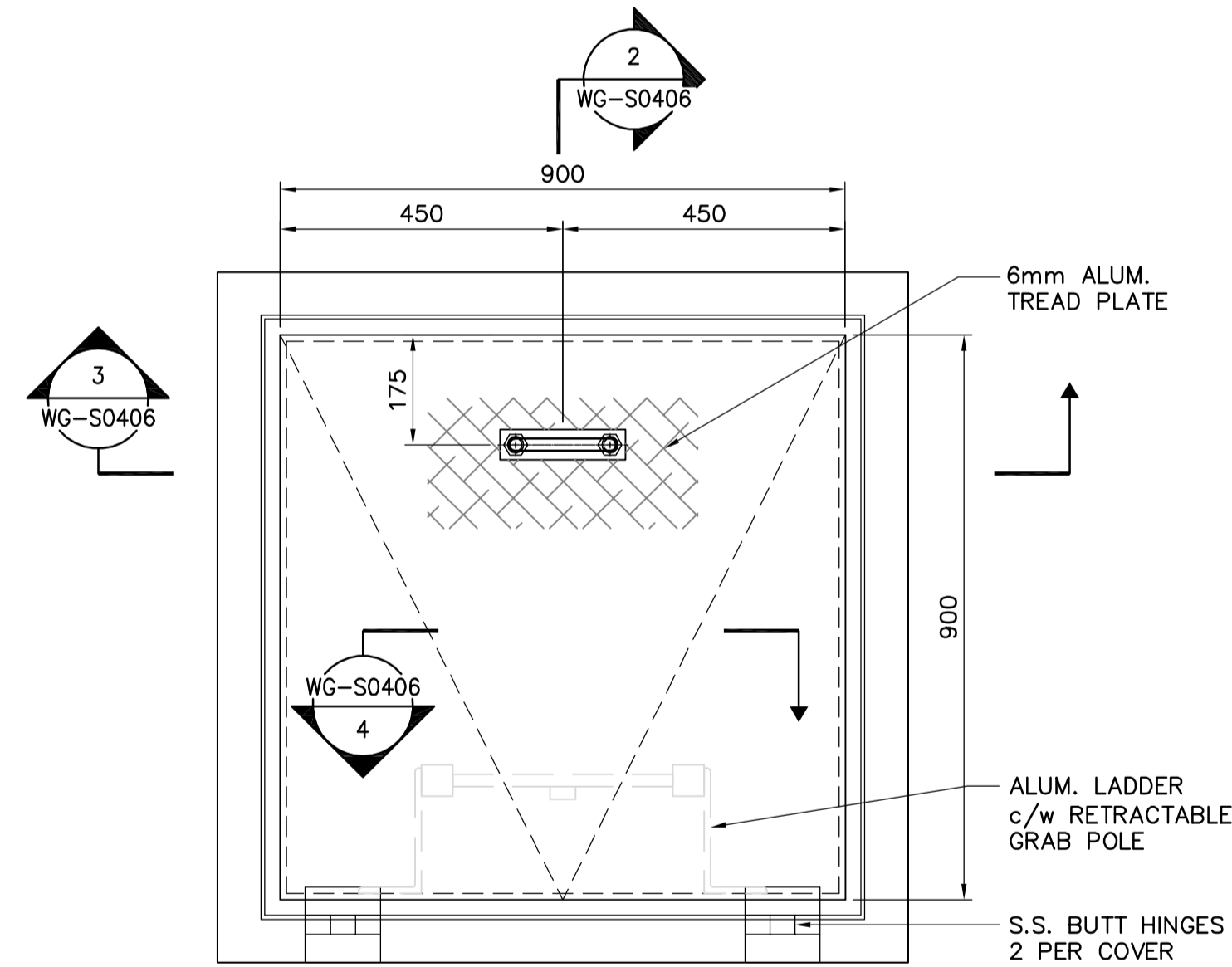


REFER TO STANDARD DETAILS FOR OPENING ADDITIONAL REINFORCING

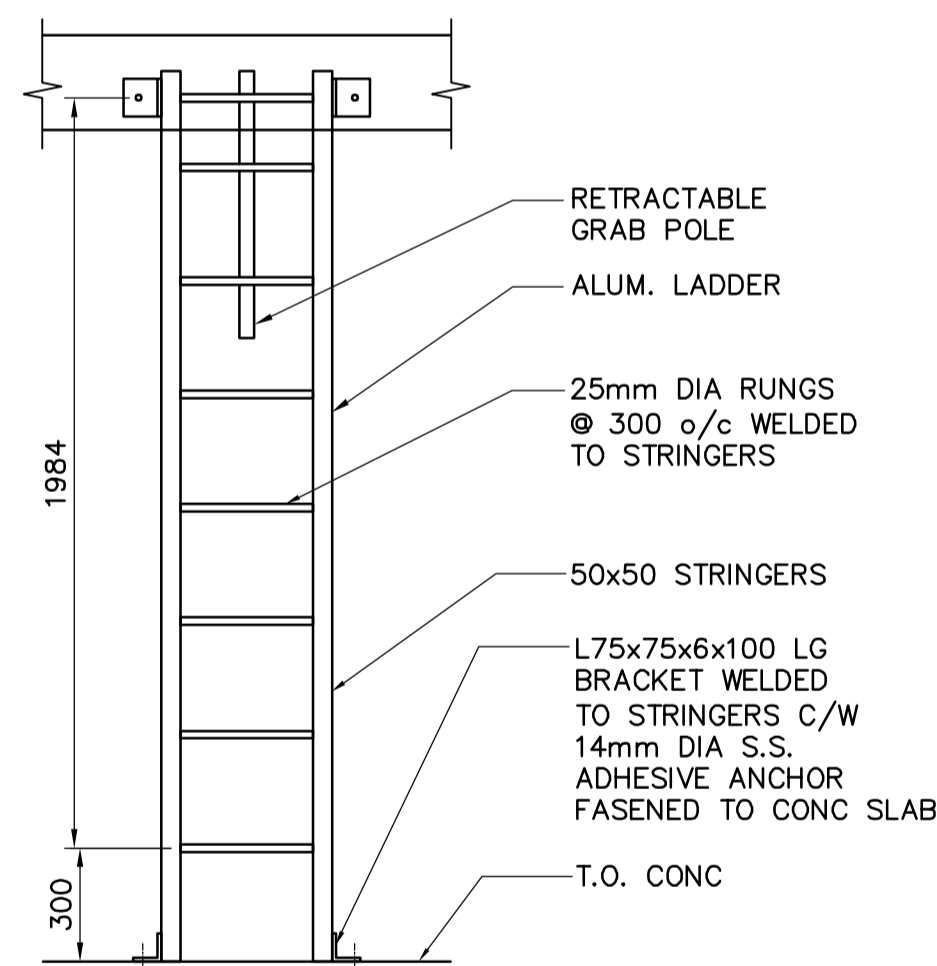
2 SECTION
WG-S0406 1:10



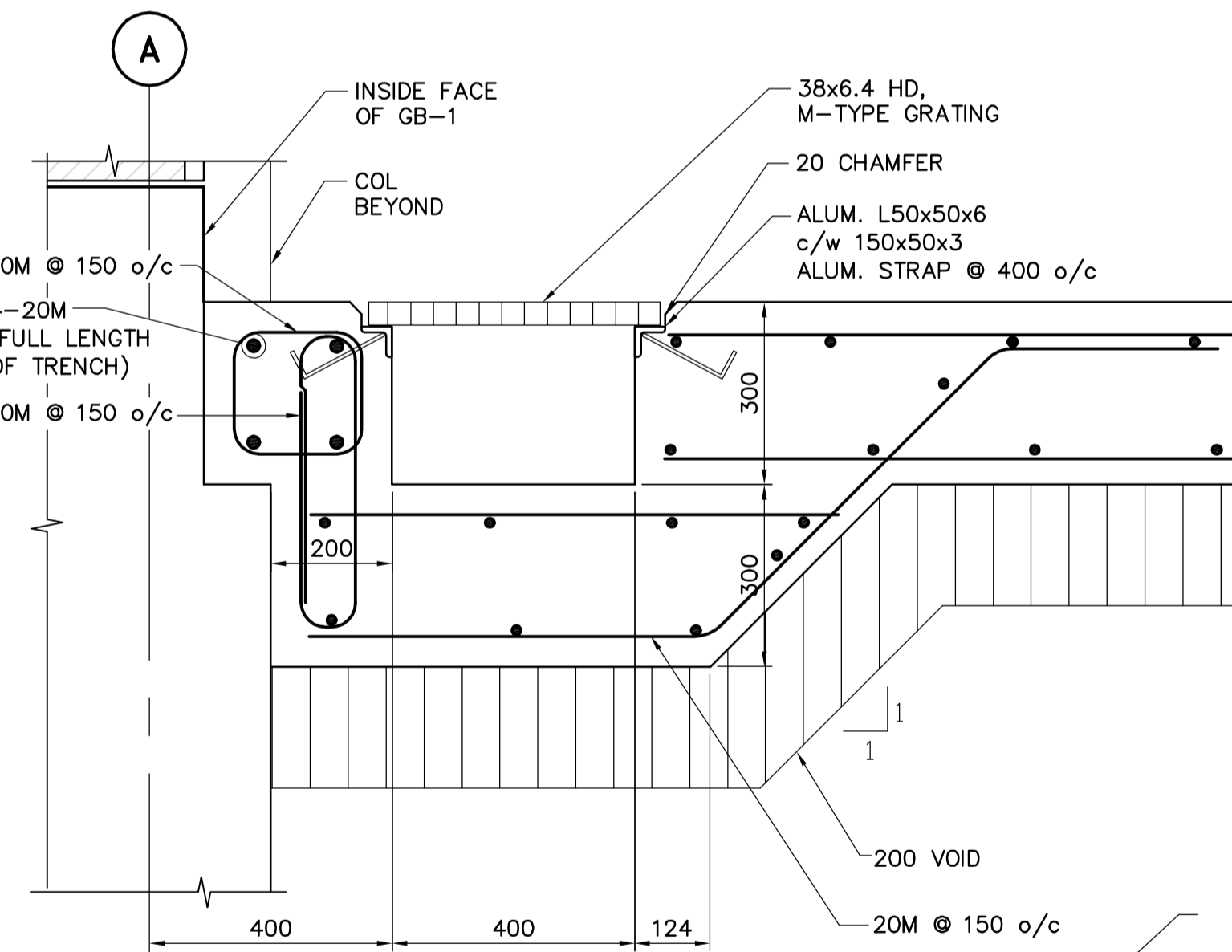
3 SECTION
WG-S0406 1:5



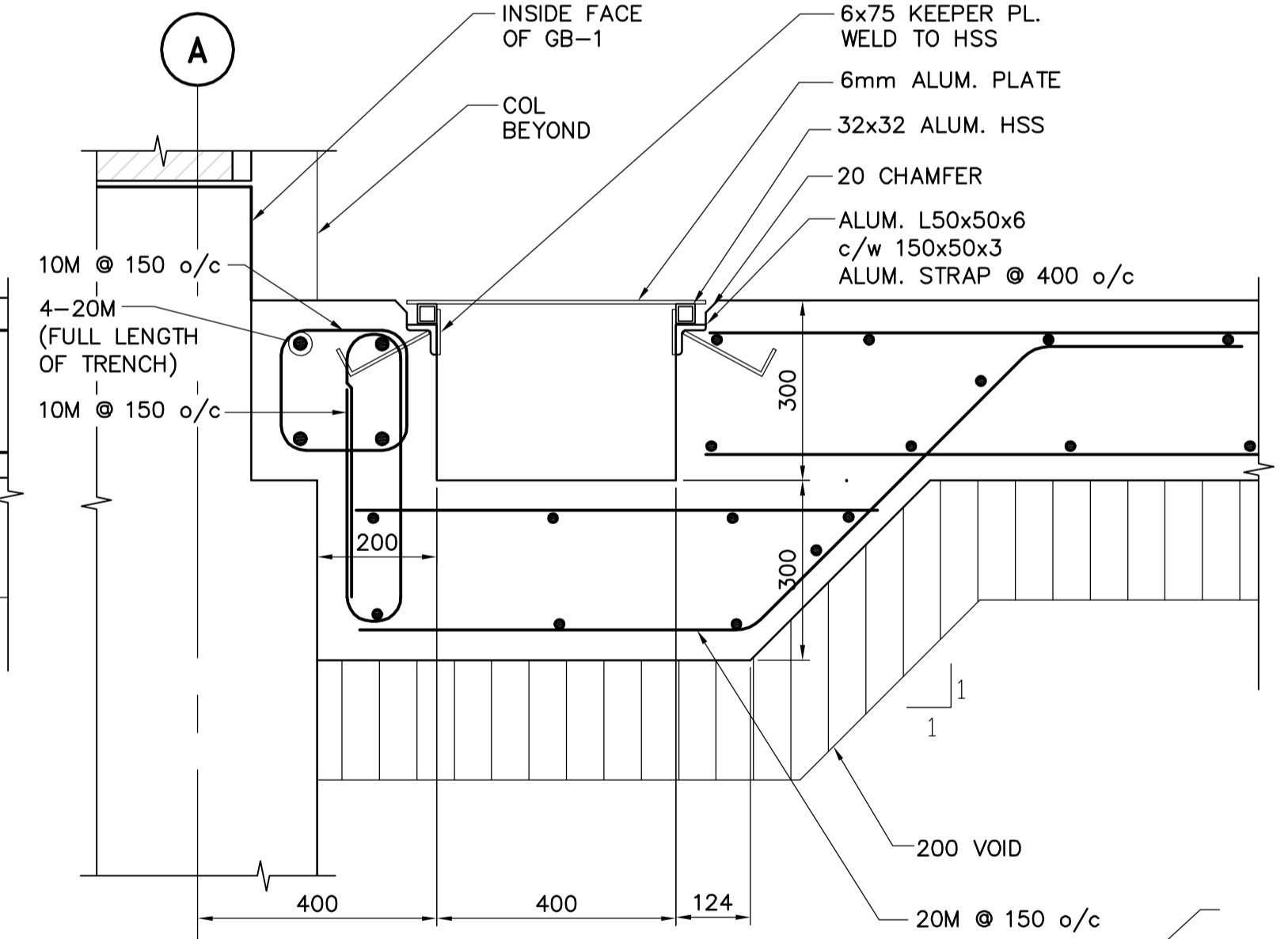
B PLAN DETAIL
WG-S0110 1:10



4 SECTION
WG-S0406 1:20



5 SECTION
WG-S0110 1:10



6 SECTION
WG-S0110 1:10



B.M. ELEV.			
DESIGNED BY	AP/GGP	CHECKED BY	MK
DRAWN BY	KK	APPROVED BY	AHL
SCALE:	AS SHOWN	RELEASED FOR CONSTRUCTION BY:	R. SOROKOWSKI
NO. REVISIONS	DATE	DATE	DATE
00	ISSUED FOR TENDER 06/08/28	KK	
		DATE	2006/06/16

CH2M HILL Frederickson Cooper ARCHITECTS	EarthTech A Tyco International Ltd. Company		
DESIGNED BY	AP/GGP	CHECKED BY	MK
DRAWN BY	KK	APPROVED BY	AHL
SCALE:	AS SHOWN	RELEASED FOR CONSTRUCTION BY:	R. SOROKOWSKI
DATE	2006/06/16	DATE	2006/08/30

ENGINEER'S SEAL
ORIGINAL SIGNED BY
A. POCHANART
2006/08/30
CONSULTANT DRAWING NO.
WG-S0406

THE CITY OF WINNIPEG WATER AND WASTE DEPARTMENT ENGINEERING DIVISION	
WATER TREATMENT PLANT STANDBY POWER GENERATOR	CITY FILE NUMBER
STRUCTURAL	SHEET OF
SECTIONS & DETAILS	CITY DRAWING NUMBER
	1-06015-A-S0406-001-000