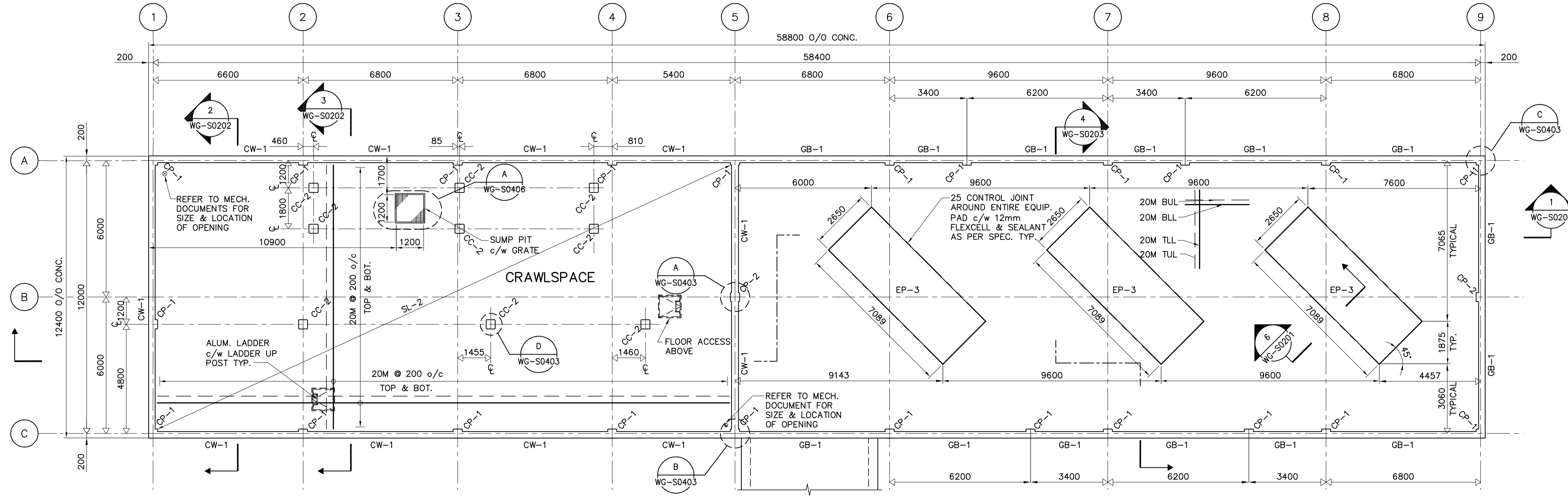


**PILING PLAN**  
1:100  
REFER TO DWG. WG-S0002 FOR PILE SCHEDULE



**FOUNDATION PLAN**  
1:100

DESIGN LOADS:		
CRAWLSPACE		
A.) DEAD LOADS:	.1) STRUCTURE SELF WEIGHT	
	.2) SUPERIMPOSED =	0.75 kPa
B.) LIVE LOADS:	.1) OCCUPANCY (ELECT., SAMPLE & CONTROL RMS)	4.8 kPa
	.2) OCCUPANCY (BLOWER RM.)	4.8 kPa



NO.	REVISIONS	DATE	BY
00	ISSUED FOR TENDER	06/08/28	KK

CH2M HILL Frederickson Cooper ARCHITECTS		EarthTech A Tec International Ltd. Company	
DESIGNED BY	AP/GGP	CHECKED BY	MK
DRAWN BY	KK	APPROVED BY	AHL
SCALE:	AS SHOWN	RELEASED FOR CONSTRUCTION BY:	R. SOROKOWSKI
DATE	2006/06/16	DATE	2006/08/30

ENGINEER'S SEAL	
ORIGINAL SIGNED BY	A. POCHANART
	2006/08/30
CONSULTANT DRAWING NO.	WG-S0100

**THE CITY OF WINNIPEG**  
WATER AND WASTE DEPARTMENT  
ENGINEERING DIVISION

WATER TREATMENT PLANT  
STANDBY POWER GENERATOR

STRUCTURAL  
PILING PLAN AND FOUNDATION PLAN

CITY FILE NUMBER	
SHEET	OF
CITY DRAWING NUMBER	1-0601G-A-S0100-001-000