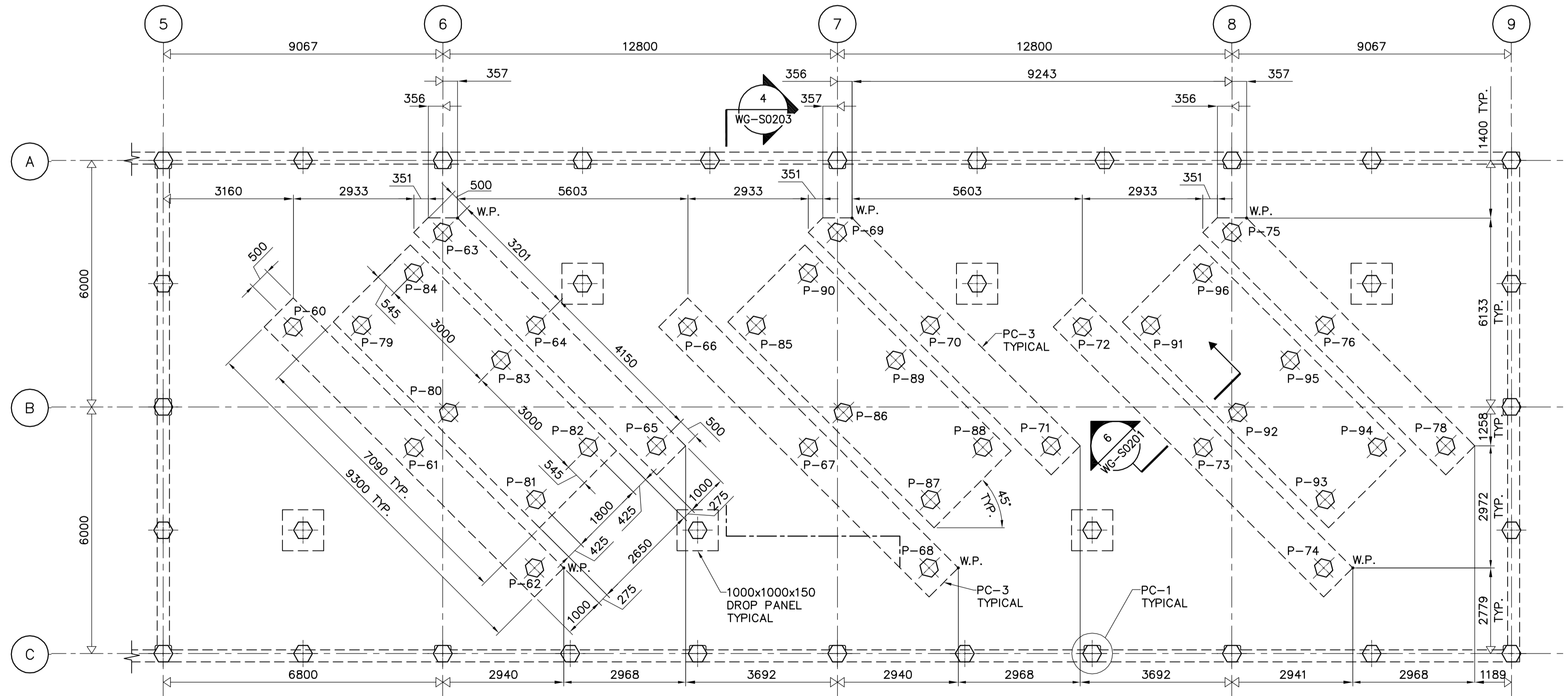
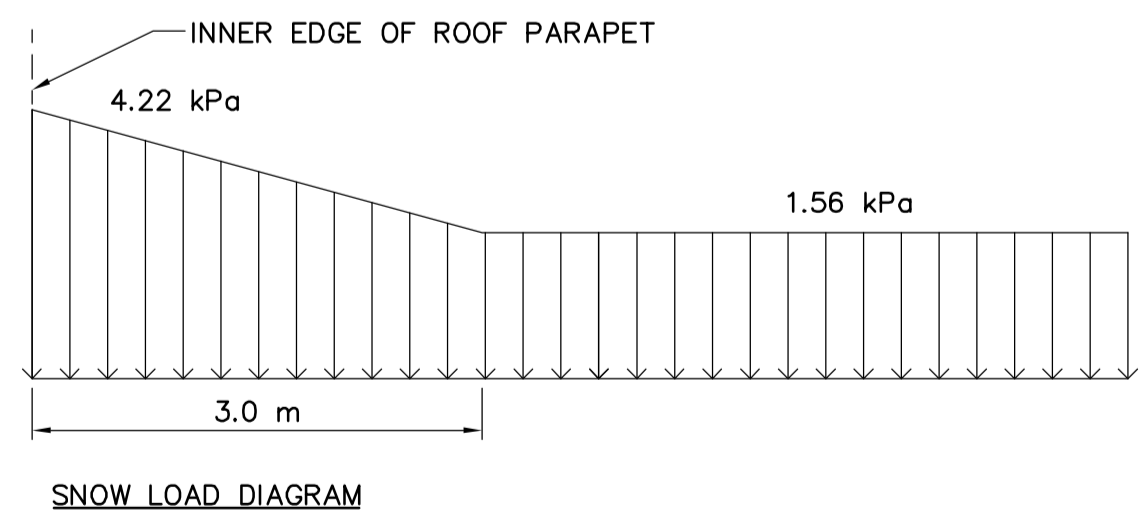


ROOF FRAMING PLAN
1:100

DESIGN LOADS:

- DEAD LOADS:
 - 1.) STRUCTURE SELF WEIGHT
 - 2.) ROOFING = 0.20 kPa
 - 3.) MECHANICAL LOAD = 0.75 kPa
 - 4.) EQUIPMENT LOAD = AS SHOWN
- LIVE LOADS:
 - 1.) GROUND SNOW LOAD - $S_s = 1.70 \text{ kPa}$
 $S_r = 0.20 \text{ kPa}$
MODIFY FOR EXPOSURE AND DRIFT AS PER NBC 1995.
 - 2.) RAIN LOAD: 0.0 kPa AT PARAPETS VARYING UNIFORMLY TO 0.5 kPa AT DRAINS
 - 3.) WIND $q(1/30) = 0.42 \text{ kPa}$
 - 4.) OCCUPANCY (ROOF) 1.0 kPa



PARTIAL PILING PLAN
1:75



B.M. ELEV.			
DESIGNED BY	AP/GGP	CHECKED BY	MK
DRAWN BY	KK	APPROVED BY	AHL
SCALE:	AS SHOWN	RELEASED FOR CONSTRUCTION BY:	R. SOROKOWSKI
00 ISSUED FOR TENDER	06/08/28	DATE	2006/06/16
NO. REVISIONS		DATE	2006/08/30

CH2M HILL
Frederickson Cooper ARCHITECTS

EarthTech
A Tyco International Ltd. Company

ENGINEER'S SEAL
ORIGINAL SIGNED BY
A. POCHANART
2006/08/30
CONSULTANT DRAWING NO.
WG-S0140

THE CITY OF WINNIPEG
WATER AND WASTE DEPARTMENT
ENGINEERING DIVISION

WATER TREATMENT PLANT
STANDBY POWER GENERATOR

STRUCTURAL
ROOF FRAMING PLAN
& PARTIAL PILING PLAN

CITY FILE NUMBER
SHEET OF
CITY DRAWING NUMBER
1-0601G-A-S0140-001-000