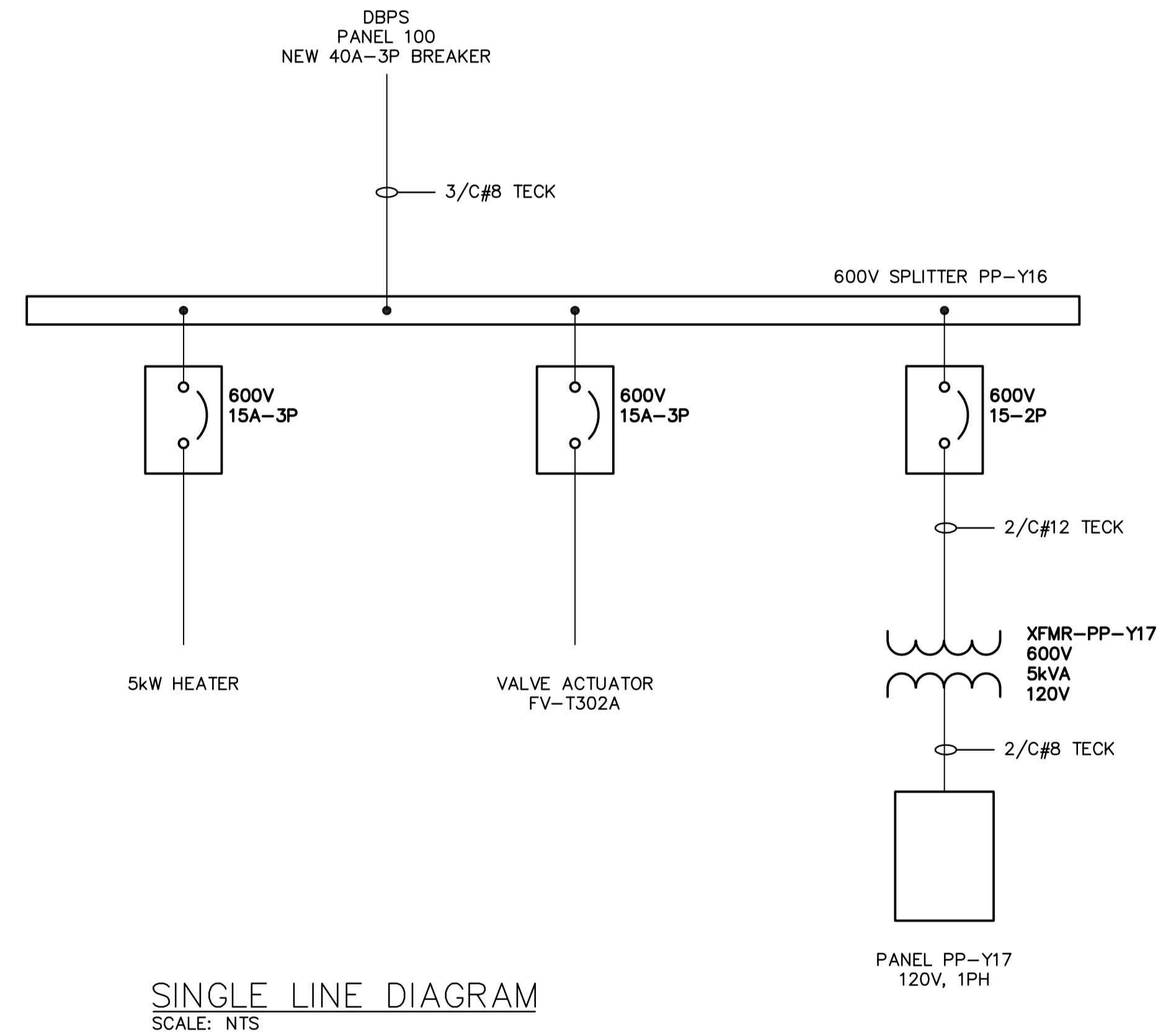


PANEL SCHEDULE									
Panel PP-Y17									
DESCRIPTION	LOAD	BKR	CCT	A	B	CCT	BKR	LOAD	DESCRIPTION
Lighting - Interior		15	1	*	2	15	1		Receptacle
Lighting - Exterior		15	3	*	4	15	1		Receptacle - Pump
Spare		15	5	*	6	15	15		Spare
Spare		15	7	*	8	15	15		Spare
Space			9	*	10	15			Space
Space			11	*	12	20			Space
Space			13	*	14	30			Space
Space			15	*	16	20			Space

Voltage:	120V/1Ø/2 wire	Feeder:	2/C#8 Teck
Mains:	225A	Main Breaker:	N/A
Location:	Valve Chamber Building	Power Source:	Transformer XFMR-PP-Y17
Mounting:	Surface		



 <b>Certificate of Authorization</b> Earth Tech Canada Inc. No. 730 Expiry: April 30, 2007	B.M. ELEV.	 Frederickson Cooper ARCHITECTS	 A Type International Ltd. Company	ENGINEER'S SEAL	 <b>THE CITY OF WINNIPEG</b> WATER AND WASTE DEPARTMENT ENGINEERING DIVISION				
				DESIGNED BY: BLM		CHECKED BY: BLM	ORIGINAL SIGNED BY: B.L. MOORE	CITY FILE NUMBER	
				DRAWN BY: ERC		APPROVED BY: AHL	2006/08/30	SHEET OF	
				SCALE: AS NOTED		RELEASED FOR CONSTRUCTION BY: R. SOROKOWSKI	CONSULTANT DRAWING NO. WY-E0122	CITY DRAWING NUMBER	
	NO. REVISIONS	DATE	BY	DATE	2006/06/01	DATE	2006/08/30		1-0601Y-A-E0122-001-000