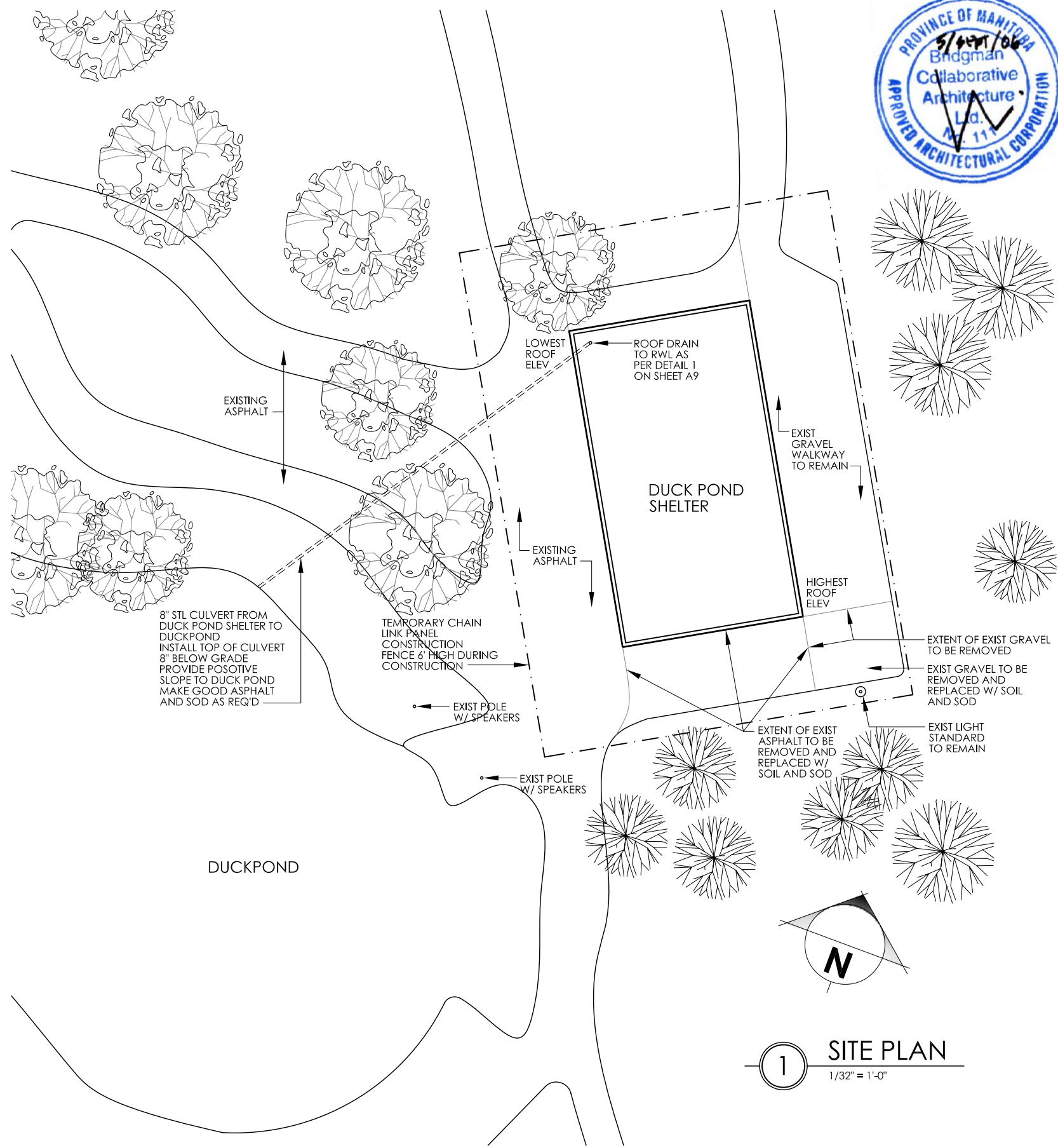


KEYPLAN



ABBREVIATIONS

ACT	Acoustic Ceiling Tile	FR	Fire Rated	PTD	Painted
ADB	Auto Door Bottom	FRM	Frame	PTG	Pressure Treated Green
AGG	Aggregate	FS	Floor Stop	RC	Recycled Door & Frame
B/O	Bottom Of	G1	Grade One	REQ'D	Required
B/U	Built-Up	G2	Grade Two	RS	Reverse Swing
B/W	Between	GALV	Galvanized	RWB	Rubber Wall Base
CB	Concrete Block	GL	Glazing	RWL	Rain Water Leader
CGSB	Canada Government Standards Board	GWB	Gypsum Wall Board	SBM	Supplied by Manufacturer
CL	Door Closer	HM	Hollow Metal	SC	Self Covered Base
CLNG	CEILING	HORIZ	Horizontal	SS	Smoke Seal
CMU	Concrete Masonry Unit	INS	Insulated	ST	Stain
CONC	Concrete	KMM	Key to Master	STL	Steel
CONT	Continuous	KP	Kick Plate	STRUCT	Structural
C/W	Complete With	LH	Lever Handle	STG	Stain Grade
DIA	Diameter	LAM	Laminate	SWD	Solid Wood Door
DB	Dead Bolt	MAR	Marmoleum	T&G	Tongue and Groove
DO	Door Opener	MAT	Material	TH	Threshold
DP	Door Pull	MAX	Maximum	T/O	Top Of
DS	Door Sweep	MECH	Mechanical	U/S	Underside
EDT	Exit Device Trim	MIN	Minimum	VB	Vapor Barrier
EQ	Equal	MTL	Metal	VCT	Vinyl Composite Tile
ELEC	Electrical	NA	Not Applicable	VERT	Vertical
EXIST	Existing	NIC	Not In Contract	W/	With
FB	Flush Bolt	OSB	Oriented Strand Board	WG	Wood
FBG	Fiberglass	PH	Panic Hardware	WG	Wired Glass
FE	Fire Extinguisher	PLWD	Plywood	WMFE	Wall Mounted Fire Extinguisher
FEC	Fire Extinguisher Cabinet	PP	Push Plate	WS	Wall Stop
FIN	Finish	PREFIN	Pre-finished	WSP	Weather Stripping
FL	Fusible Link	PS	Privacy Set	180	180-Degree Swing
FLH	Fixed Lever Handle	PSF	Pressed Steel Frame		

