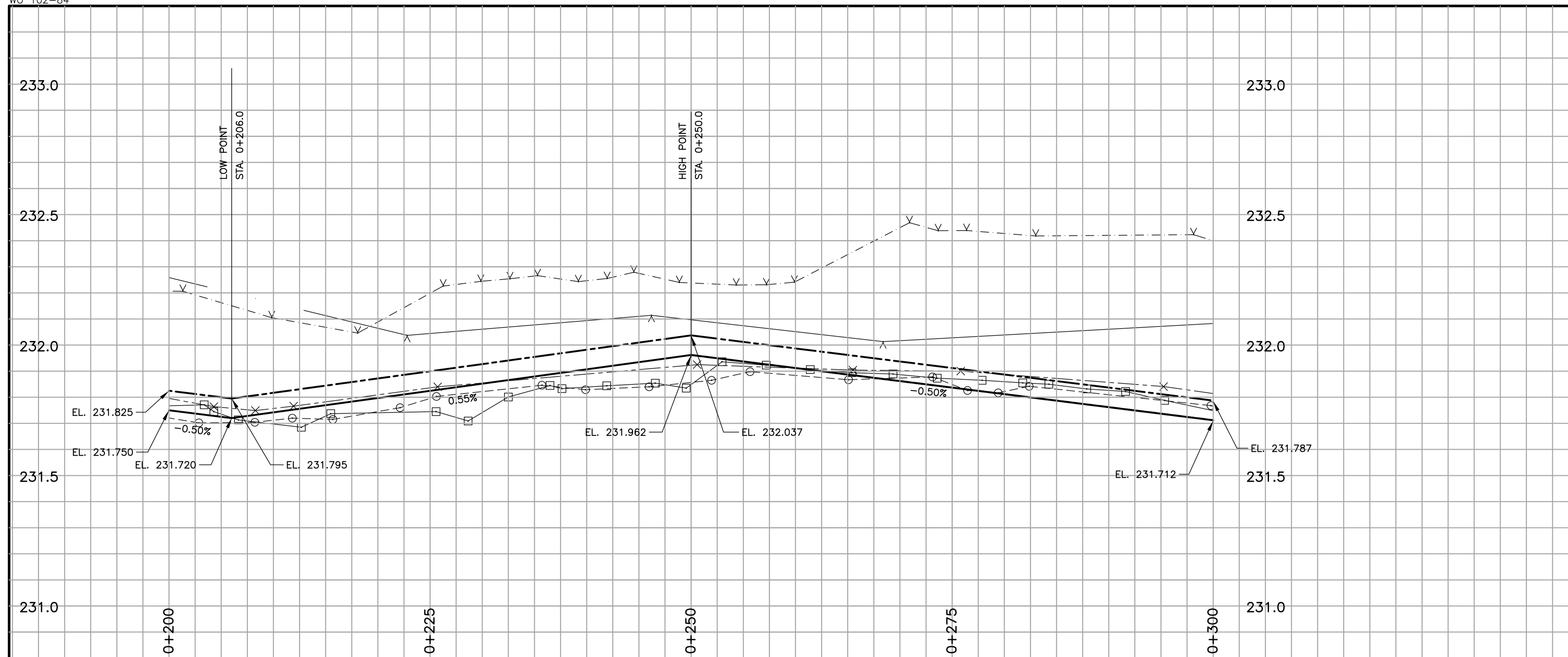
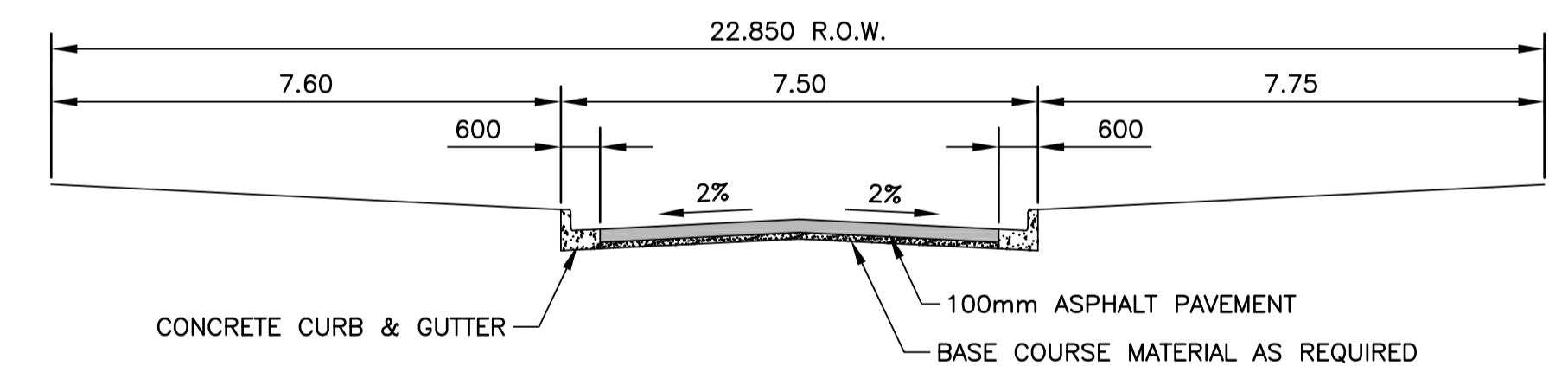
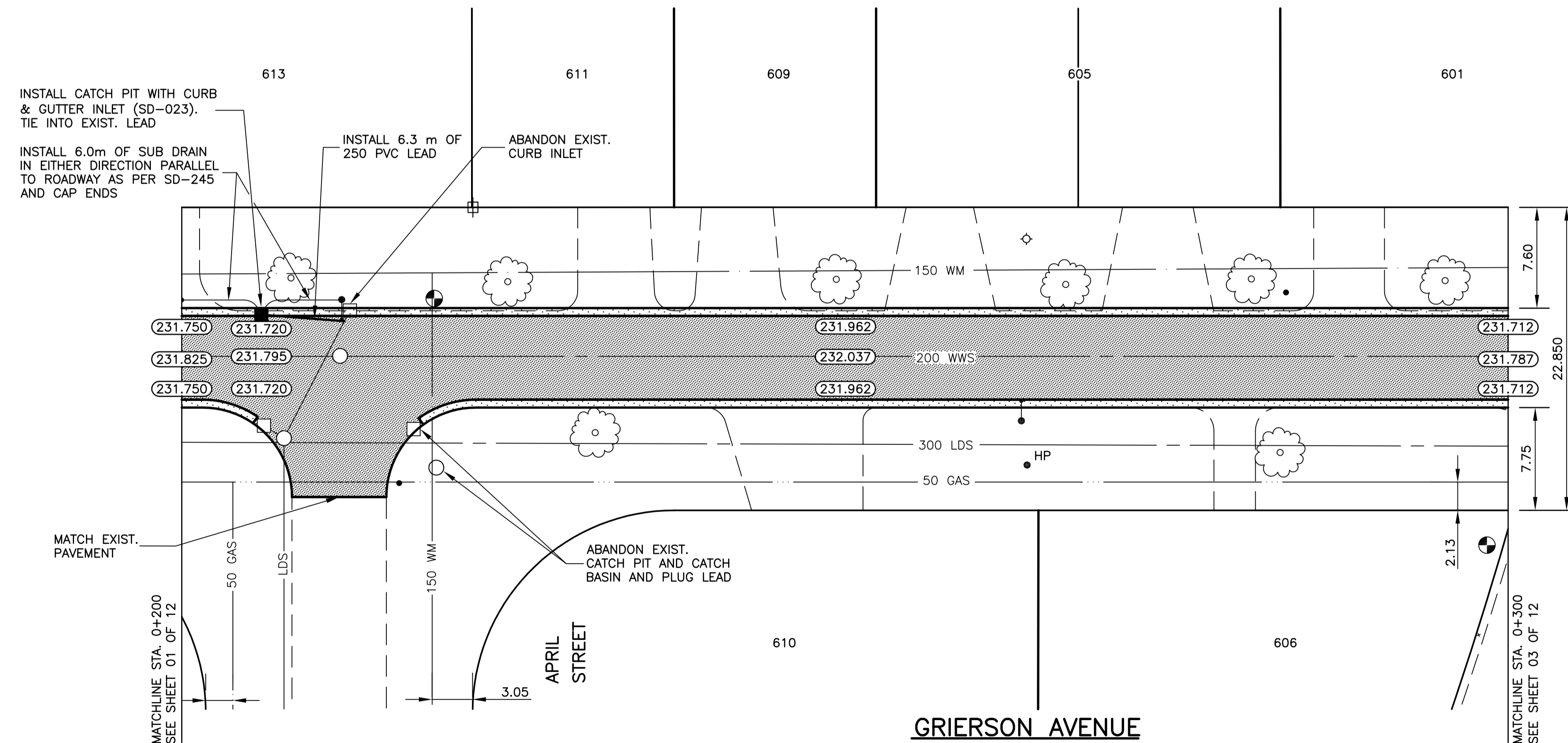


L = 245m W = 7.3m A = 1788.5m²
 TYPE - RECONSTRUCTION



CONSTRUCTION NOTES:

1. CONTRACTOR SHALL TAKE PRECAUTIONARY STEPS TO AVOID DAMAGE FROM CONSTRUCTION ACTIVITIES TO EXISTING BOULEVARDS AND TREES WITHIN THE LIMITS OF CONSTRUCTION.
2. LOCATION OF EXISTING SERVICES ARE TO BE CONFIRMED IN THE FIELD BY THE CONTRACTOR.
3. TIE-INS TO BE VERIFIED IN THE FIELD BY THE CONTRACT ADMINISTRATOR.
4. DRIVEWAY PLACEMENT TO BE MARKED OUT IN THE FIELD AS DIRECTED BY THE CONTRACT ADMINISTRATOR.
5. BOULEVARD REPLACEMENT TO BE FINALIZED IN THE FIELD AS DIRECTED BY THE CONTRACT ADMINISTRATOR.
6. 300mm SUB BASE TO BE ADDED WHERE OVER EXCAVATION IS REQUIRED AS DIRECTED IN THE FIELD BY THE CONTRACT ADMINISTRATOR.
7. CONTRACTOR SHALL BE RESPONSIBLE TO ENSURE RESIDENTS HAVE REMOVED ALL VEHICLES, TRAILERS, ETC. FROM GARAGES/DRIVEWAYS PRIOR TO REMOVAL OF STREET IN FRONT OF RESPECTIVE PROPERTIES.



TYPICAL CROSS SECTION
N.T.S.

METRIC
 WHOLE NUMBERS INDICATE MILLIMETRES
 DECIMALIZED NUMBERS INDICATE METRES

WARNING

- IF POWER EQUIPMENT OR EXPLOSIVES ARE TO BE USED FOR EXCAVATION ON THIS PROJECT THE CONTRACTOR MUST:
1. NOTIFY THE GAS COMPANY OF THE PROPOSED LOCATION OF EXCAVATION.
 2. TAKE PRECAUTION TO AVOID DAMAGE TO GAS COMPANY INSTALLATIONS SEE PROVINCIAL REGULATION 210/72 FOR DETAILS

150 mm W.M.	WATERMAIN	150 mm W.M.	HYDRO	150 mm W.M.	WATERMAIN	150 mm W.M.
Hydrant	HYDRANT	Valve	M.T.S.	Hydrant	HYDRANT	Valve
300 mm L.D.S.	LAND DRAINAGE SEWER	300 mm L.D.S.	CONCRETE	300 mm L.D.S.	LAND DRAINAGE SEWER	300 mm L.D.S.
250 mm W.W.S.	WASTE WATER SEWER	250 mm W.W.S.	ASPHALT	250 mm W.W.S.	WASTE WATER SEWER	250 mm W.W.S.
Manhole	MANHOLE	Manhole	PLANING	Manhole	MANHOLE	Manhole
Catch Basin	CATCH BASIN	Catch Basin	SIDEWALK	Catch Basin	CATCH BASIN	Catch Basin
Curb Inlet	CURB INLET	Curb Inlet	PAVING STONES	Curb Inlet	CURB INLET	Curb Inlet
Junctions	JUNCTIONS	Junctions	PARTIAL DEPTH REPAIR	Junctions	JUNCTIONS	Junctions
Culvert	CULVERT	Culvert	PROPERTY LINE	Culvert	CULVERT	Culvert
Gas	GAS	Gas	SURVEY BAR	Gas	GAS	Gas
Existing	LEGEND-PLAN	Proposed	PARAPLEGIC RAMP	Existing	LEGEND-PROFILE	Proposed

UNDERGROUND STRUCTURES
 ORIGINAL SIGNED BY DERRICK A SAEDAL 04/5/06
 SUPPLY U/G STRUCTURES COMMITTEE DATE

NOTE:
 LOCATION OF UNDERGROUND STRUCTURES AS SHOWN ARE BASED ON THE BEST INFORMATION AVAILABLE. BUT NO GUARANTEE IS GIVEN THAT ALL EXISTING UTILITIES ARE SHOWN OR THAT THE GIVEN LOCATIONS ARE EXACT. CONFIRMATION OF EXISTENCE AND EXACT LOCATION OF ALL SERVICES MUST BE OBTAINED FROM THE INDIVIDUAL UTILITIES BEFORE PROCEEDING WITH CONSTRUCTION.

B.M. ELEV.	77-025	232.488
DESIGNED BY	T. PETERS	
DRAWN BY	J. MORRIS	
CHECKED BY	D. KRAHN	
APPROVED BY	ORIGINAL SIGNED BY D. KRAHN, P.Eng.	
HOR. SCALE	1:250	
VERTICAL	1:10	
RELEASSED FOR CONSTRUCTION	ORIGINAL SIGNED BY KEN TURKO, C.E.T.	DATE APRIL 12, 2006

NO.	REVISIONS	DATE	BY
2	ISSUED FOR TENDER	04/12/06	T.J.P.
1	ISSUED FOR REVIEW	01/31/05	T.J.P.

DILLON CONSULTING

ENGINEER'S SEAL
 ORIGINAL STAMPED BY
T.J. PETERS
 04/12/06
 REGISTERED PROFESSIONAL ENGINEER

THE CITY OF WINNIPEG
 PUBLIC WORKS DEPARTMENT

2006 RESIDENTIAL STREET RENEWAL PROGRAM

GRIERSON AVENUE

UNIVERSITY CRES. TO KING'S DR.
 STA. 0+200 TO STA. 0+300

CITY DRAWING NUMBER
 SHEET **02** OF **12**

CONSULTANT PROJECT NO.
05-5439-2000