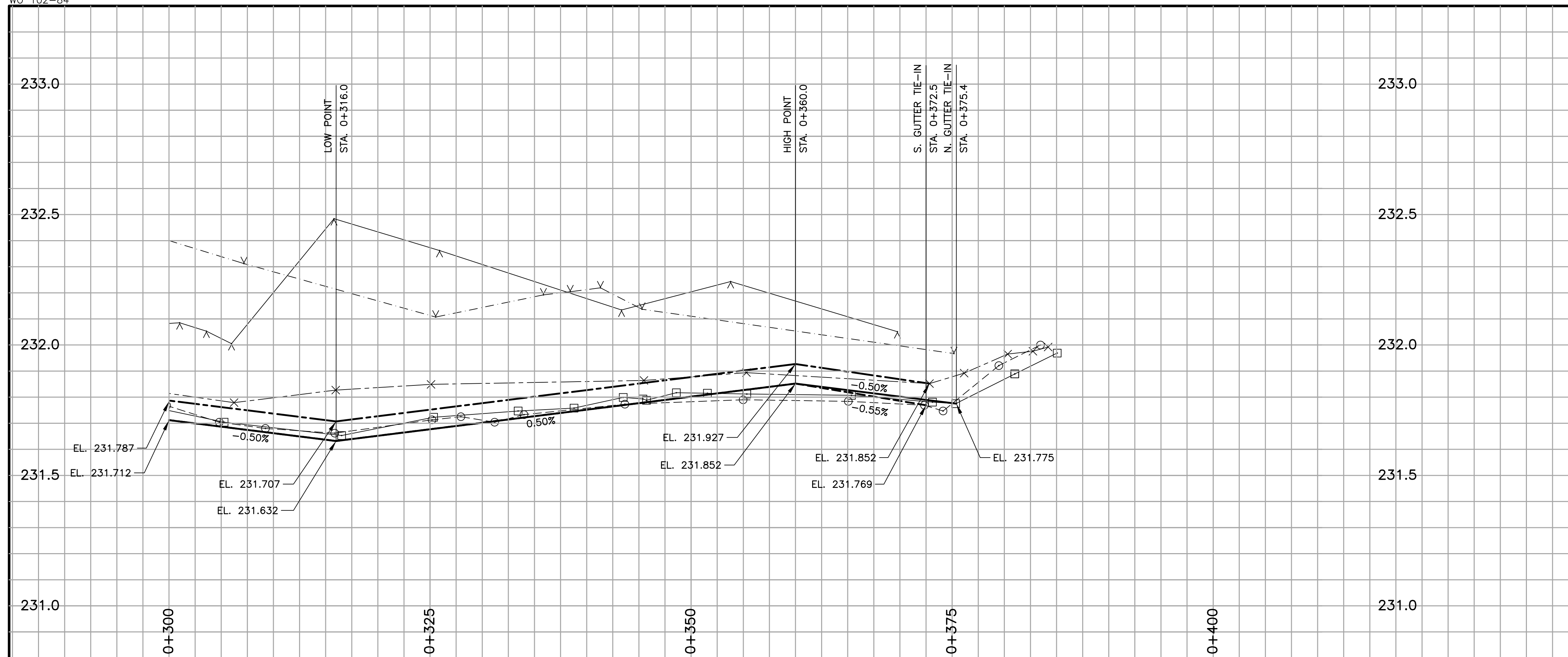
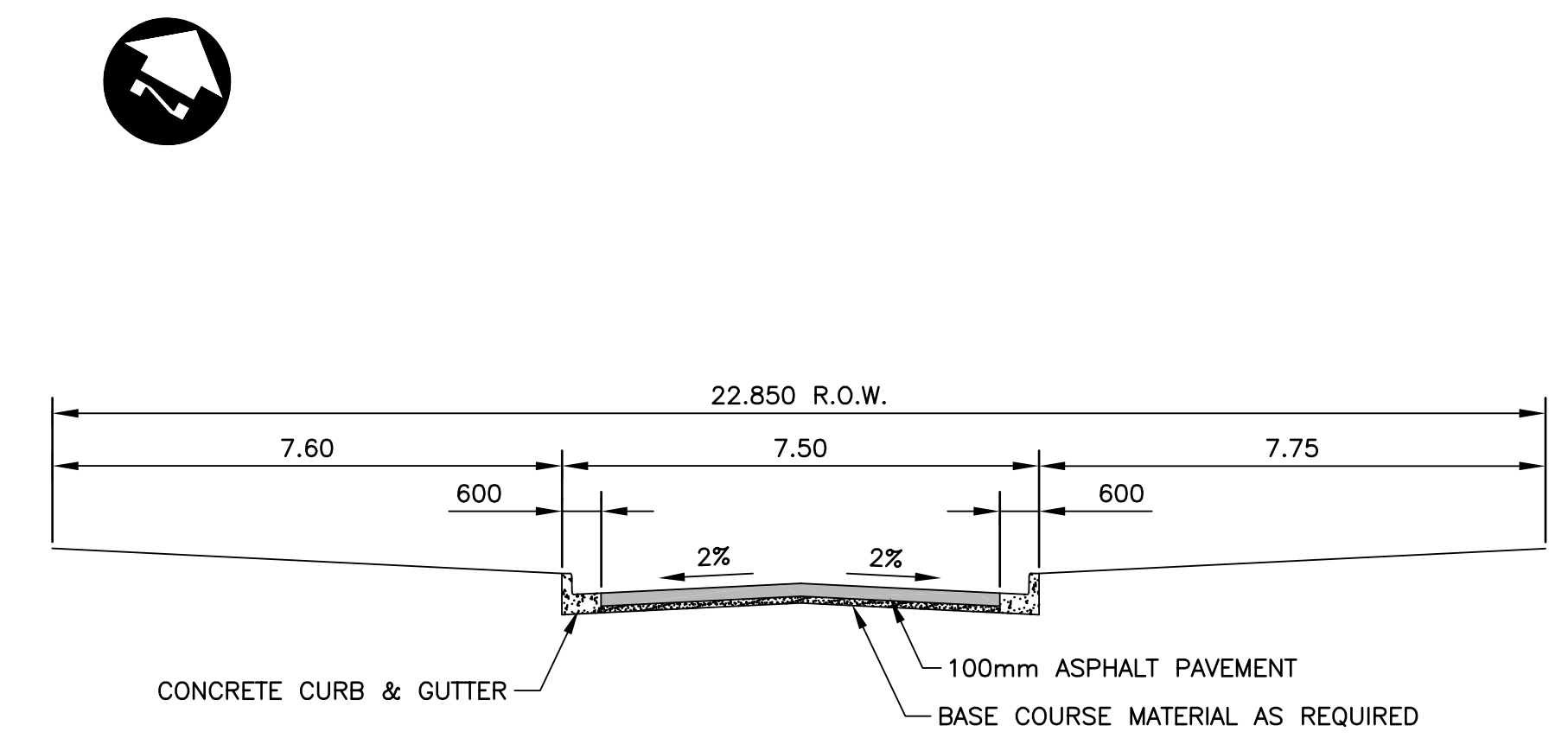
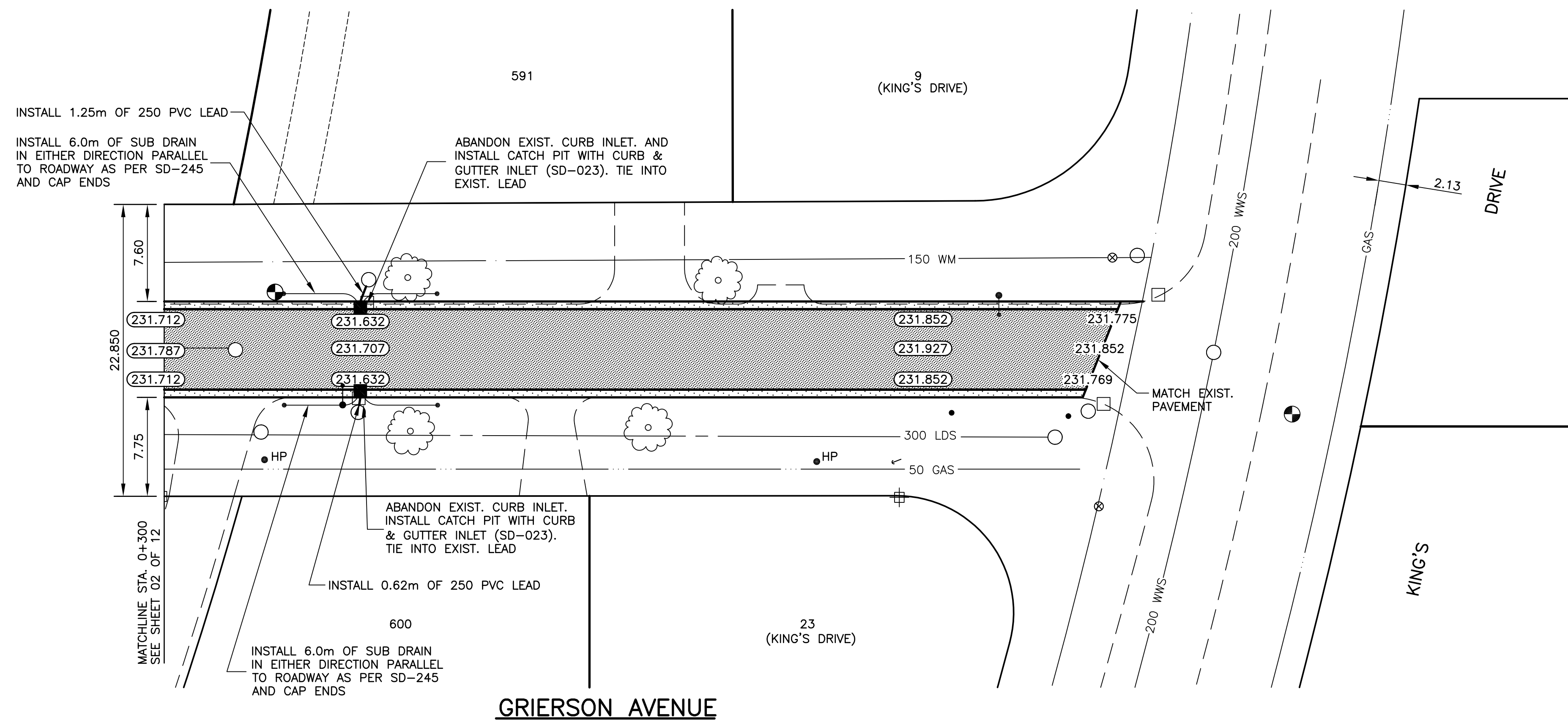


L = 245m W = 7.3m A = 1788.5m²
 TYPE - RECONSTRUCTION



CONSTRUCTION NOTES:

1. CONTRACTOR SHALL TAKE PRECAUTIONARY STEPS TO AVOID DAMAGE FROM CONSTRUCTION ACTIVITIES TO EXISTING BOULEVARDS AND TREES WITHIN THE LIMITS OF CONSTRUCTION.
2. LOCATION OF EXISTING SERVICES ARE TO BE CONFIRMED IN THE FIELD BY THE CONTRACTOR.
3. TIE-INS TO BE VERIFIED IN THE FIELD BY THE CONTRACT ADMINISTRATOR.
4. DRIVEWAY PLACEMENT TO BE MARKED OUT IN THE FIELD AS DIRECTED BY THE CONTRACT ADMINISTRATOR.
5. BOULEVARD REPLACEMENT TO BE FINALIZED IN THE FIELD AS DIRECTED BY THE CONTRACT ADMINISTRATOR.
6. 300mm SUB BASE TO BE ADDED WHERE OVER EXCAVATION IS REQUIRED AS DIRECTED IN THE FIELD BY THE CONTRACT ADMINISTRATOR.
7. CONTRACTOR SHALL BE RESPONSIBLE TO ENSURE RESIDENTS HAVE REMOVED ALL VEHICLES, TRAILERS, ETC. FROM GARAGES/DRIVEWAYS PRIOR TO REMOVAL OF STREET IN FRONT OF RESPECTIVE PROPERTIES.



TYPICAL CROSS SECTION
N.T.S.

METRIC
 WHOLE NUMBERS INDICATE MILLIMETRES
 DECIMALIZED NUMBERS INDICATE METRES

WARNING

- IF POWER EQUIPMENT OR EXPLOSIVES ARE TO BE USED FOR EXCAVATION ON THIS PROJECT THE CONTRACTOR MUST:
1. NOTIFY THE GAS COMPANY OF THE PROPOSED LOCATION OF EXCAVATION.
 2. TAKE PRECAUTION TO AVOID DAMAGE TO GAS COMPANY INSTALLATIONS SEE PROVINCIAL REGULATION 210/72 FOR DETAILS

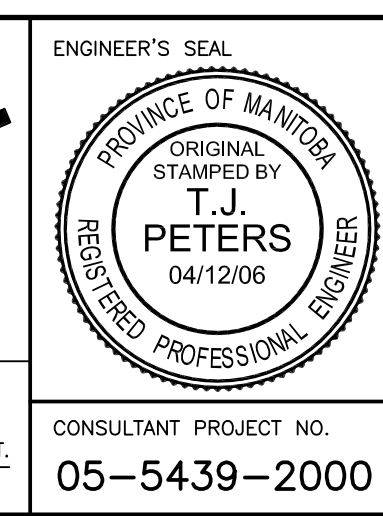
150 mm W.M.	WATERMAIN	150 mm W.M.	HYDRO	150 mm W.M.	WATERMAIN	150 mm W.M.
Hydrant Valve	CONCRETE	Hydrant Valve	M.T.S.	Hydrant Valve	CONCRETE	Hydrant Valve
300 mm L.D.S.	LAND DRAINAGE SEWER	300 mm L.D.S.	ASPHALT	300 mm L.D.S.	LAND DRAINAGE SEWER	300 mm L.D.S.
250 mm W.W.S.	WASTE WATER SEWER	250 mm W.W.S.	PLANING	250 mm W.W.S.	WASTE WATER SEWER	250 mm W.W.S.
Manhole	MANHOLE	Manhole	PAVING STONES	Manhole	MANHOLE	Manhole
Catch Basin	CATCH BASIN	Catch Basin	PARTIAL DEPTH REPAIR	Catch Basin	CATCH BASIN	Catch Basin
Curb Inlet	CURB INLET	Curb Inlet	PROPERTY LINE	Curb Inlet	CURB INLET	Curb Inlet
Junctions	JUNCTIONS	Junctions	SURVEY BAR	Junctions	JUNCTIONS	Junctions
Culvert	CULVERT	Culvert	PARAPLEGIC RAMP	Culvert	CULVERT	Culvert
Gas	GAS	Gas		Gas	GAS	Gas
EXISTING	LEGEND-PLAN	PROPOSED	EXISTING	LEGEND-PROFILE	PROPOSED	EXISTING

UNDERGROUND STRUCTURES
 ORIGINAL SIGNED BY DERRICK A SAEDA 04/5/06
 SUPPLY U/G STRUCTURES COMMITTEE DATE

NOTE:
 LOCATION OF UNDERGROUND STRUCTURES AS SHOWN ARE BASED ON THE BEST INFORMATION AVAILABLE. BUT NO GUARANTEE IS GIVEN THAT ALL EXISTING UTILITIES ARE SHOWN OR THAT THE GIVEN LOCATIONS ARE EXACT. CONFIRMATION OF EXISTENCE AND EXACT LOCATION OF ALL SERVICES MUST BE OBTAINED FROM THE INDIVIDUAL UTILITIES BEFORE PROCEEDING WITH CONSTRUCTION.

B.M. ELEV.	77-025	232.488
NO.	REVISIONS	DATE BY
2	ISSUED FOR TENDER	04/12/06 T.J.P.
1	ISSUED FOR REVIEW	01/31/06 T.J.P.

DESIGNED BY T. PETERS
 DRAWN BY J. MORRIS
 CHECKED BY D. KRAHN
 APPROVED BY ORIGINAL SIGNED BY D. KRAHN, P.Eng.



THE CITY OF WINNIPEG
 PUBLIC WORKS DEPARTMENT

2006 RESIDENTIAL STREET RENEWAL PROGRAM

GRIERSON AVENUE
 UNIVERSITY CRES. TO KING'S DR.
 STA. 0+300 TO KING'S DR.

CITY DRAWING NUMBER SHEET 03 OF 12

CONSULTANT PROJECT NO. 05-5439-2000

RELEASED FOR CONSTRUCTION ORIGINAL SIGNED BY KEN TURKO, C.E.T. DATE APRIL 12, 2006