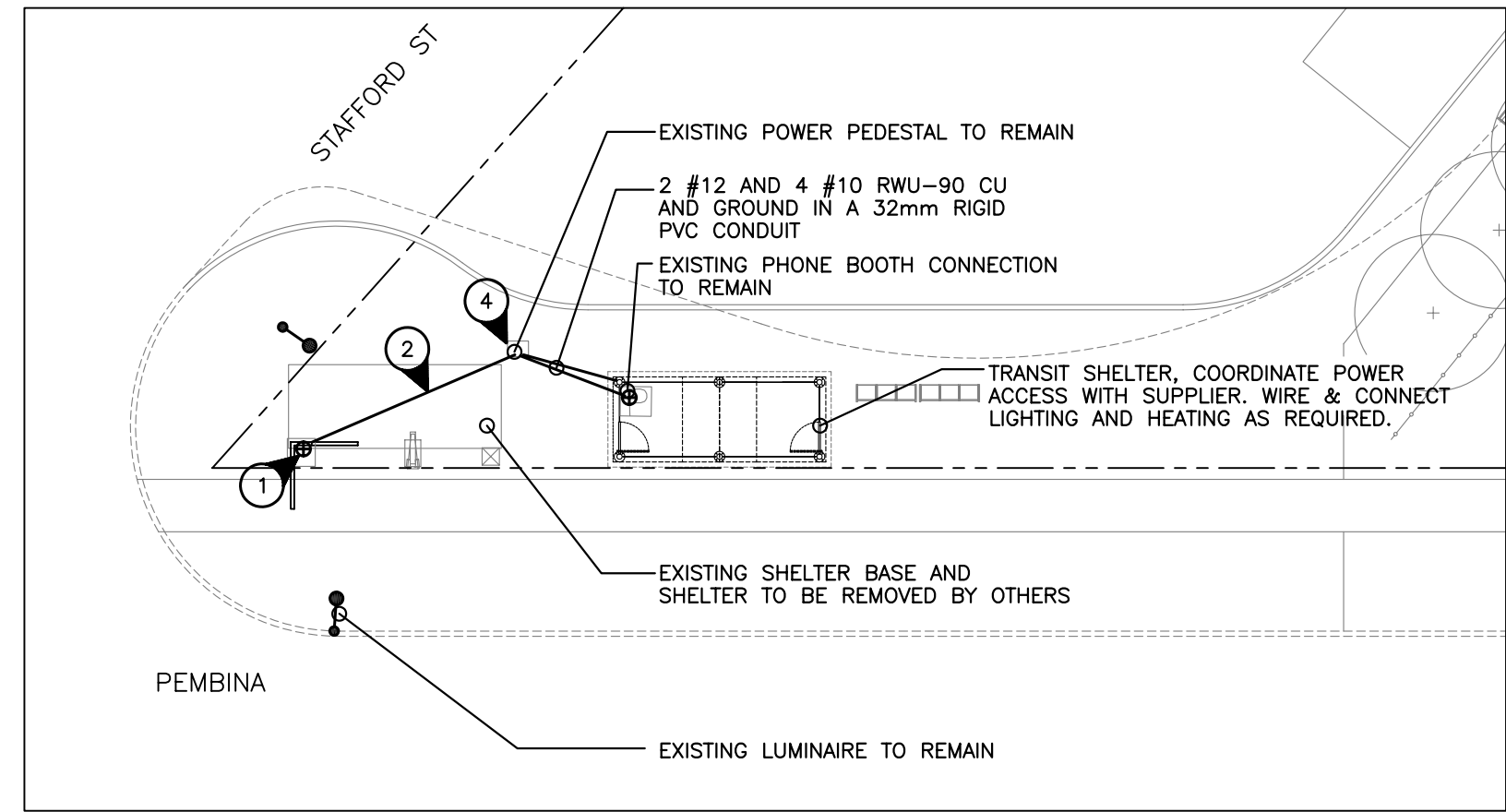
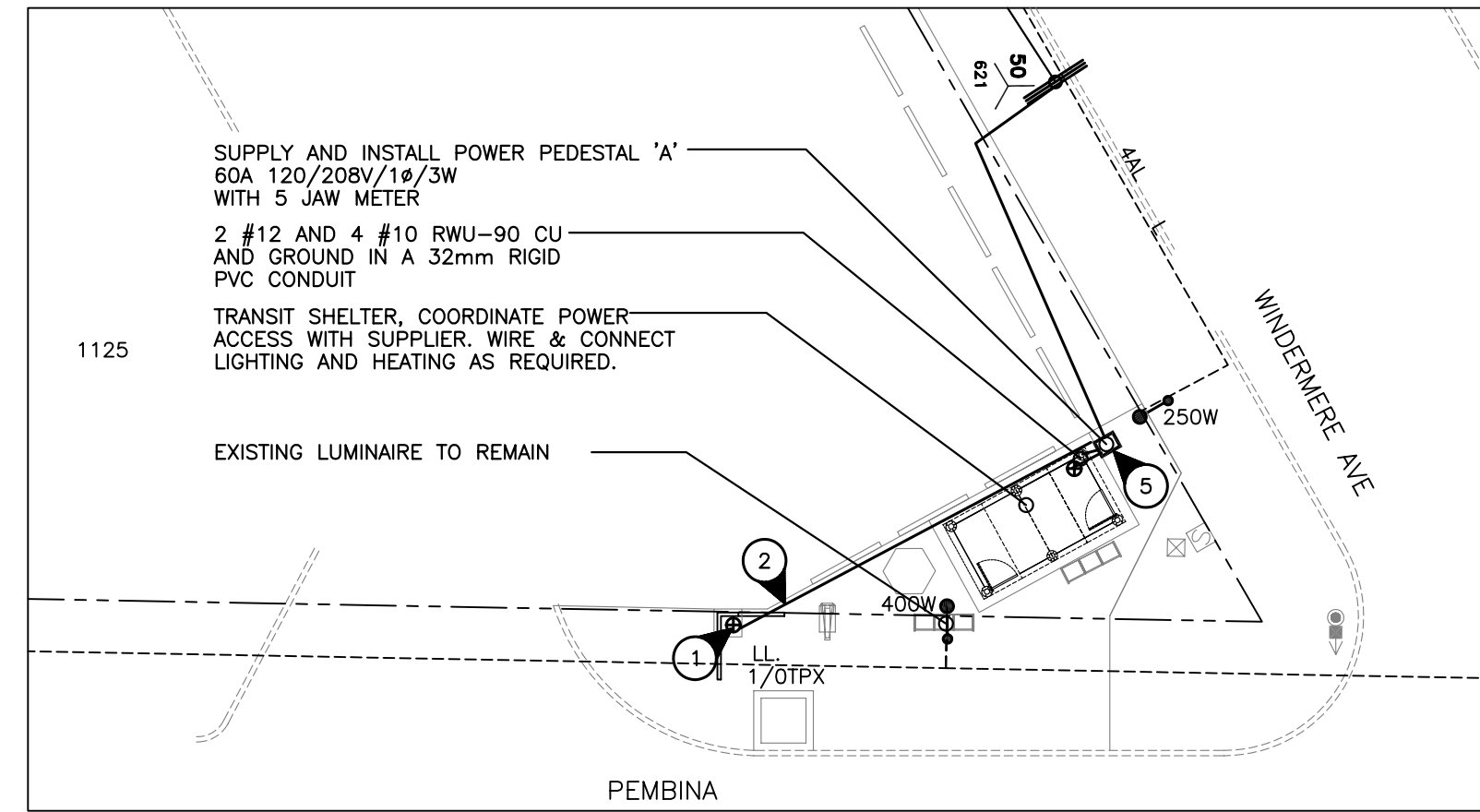


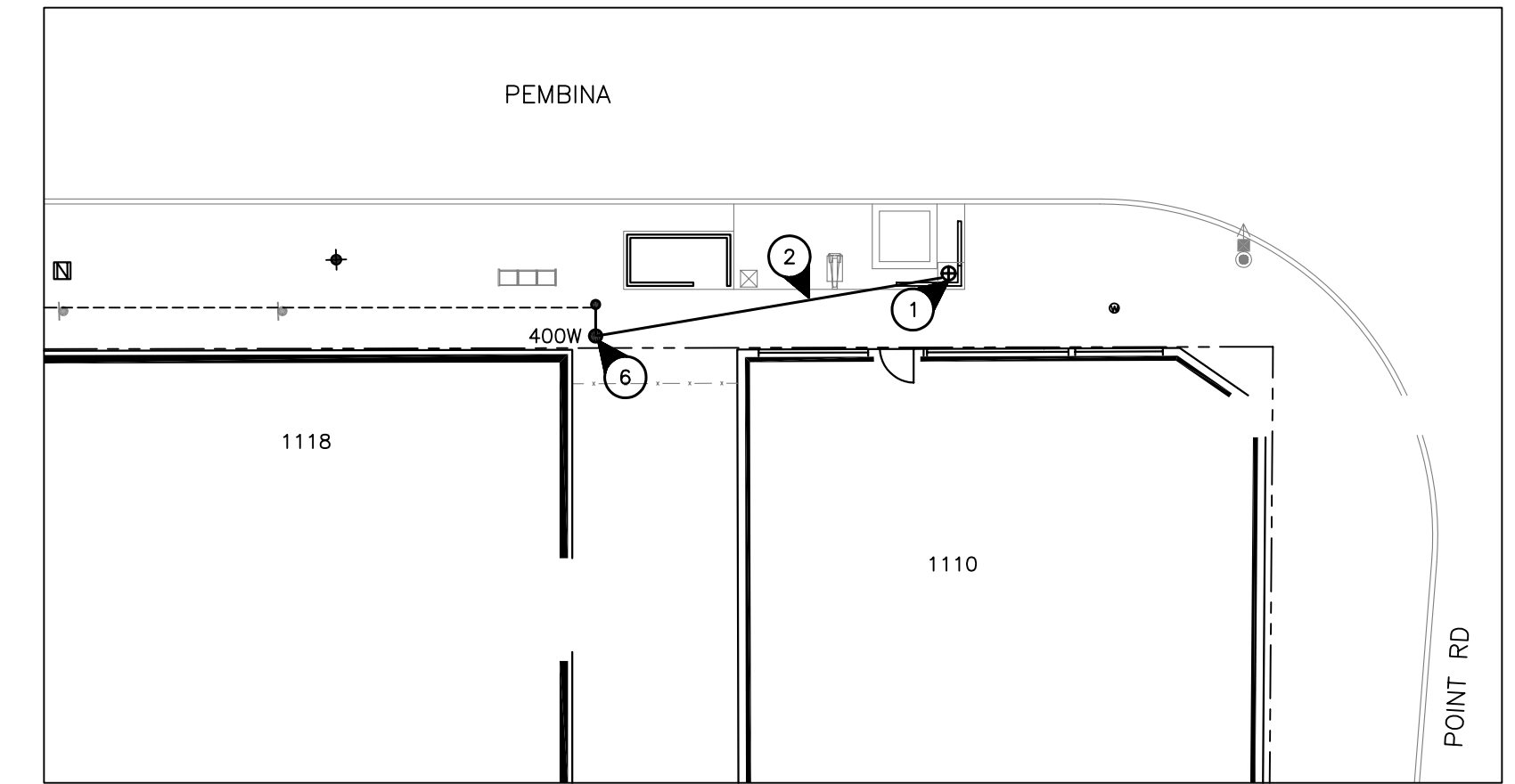
SOUTHBOUND PEMBINA FARSIDE GRANT
STOP 10078 GRANT



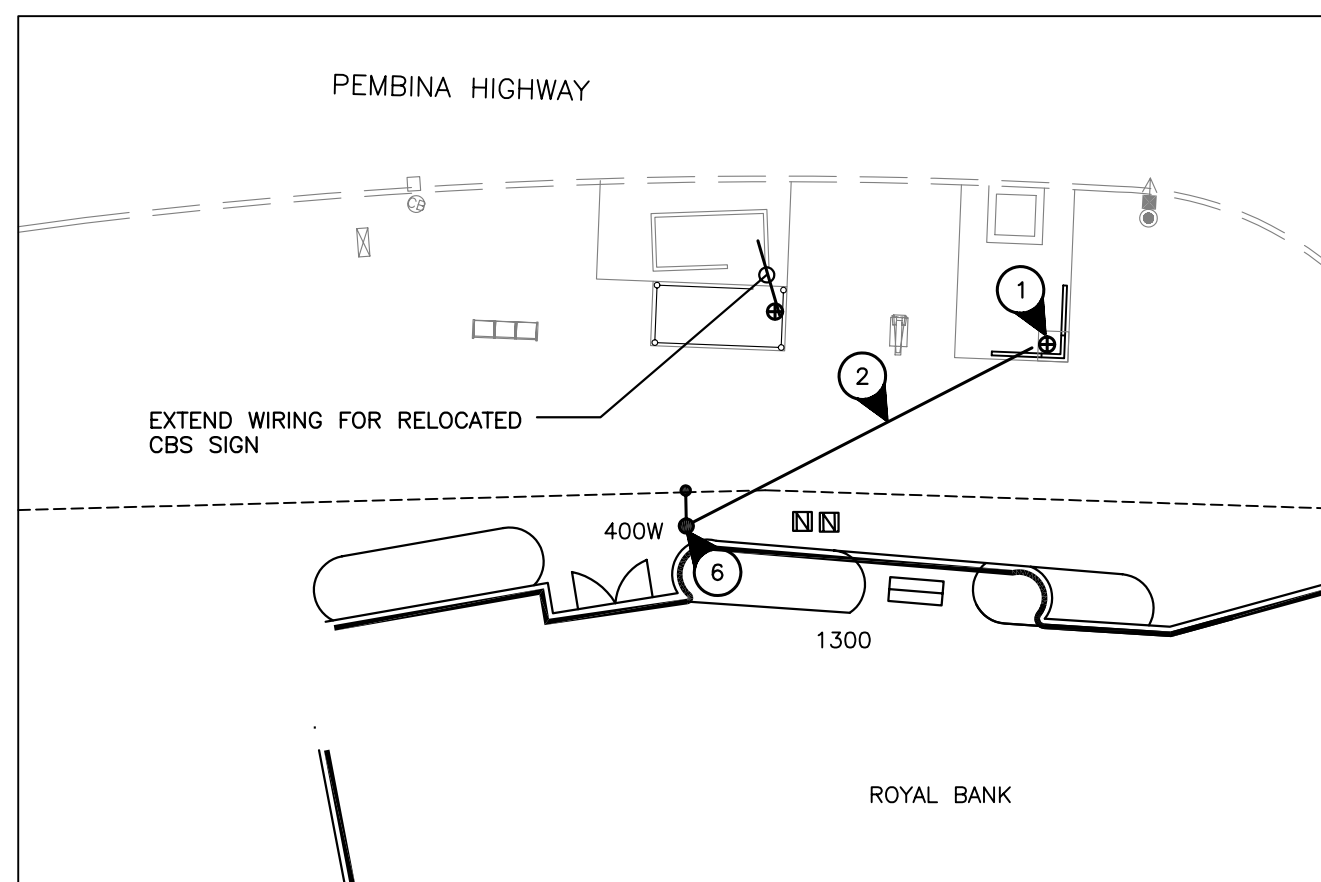
SOUTHBOUND PEMBINA NEARSIDE STAFFORD
STOP 10085 STAFFORD



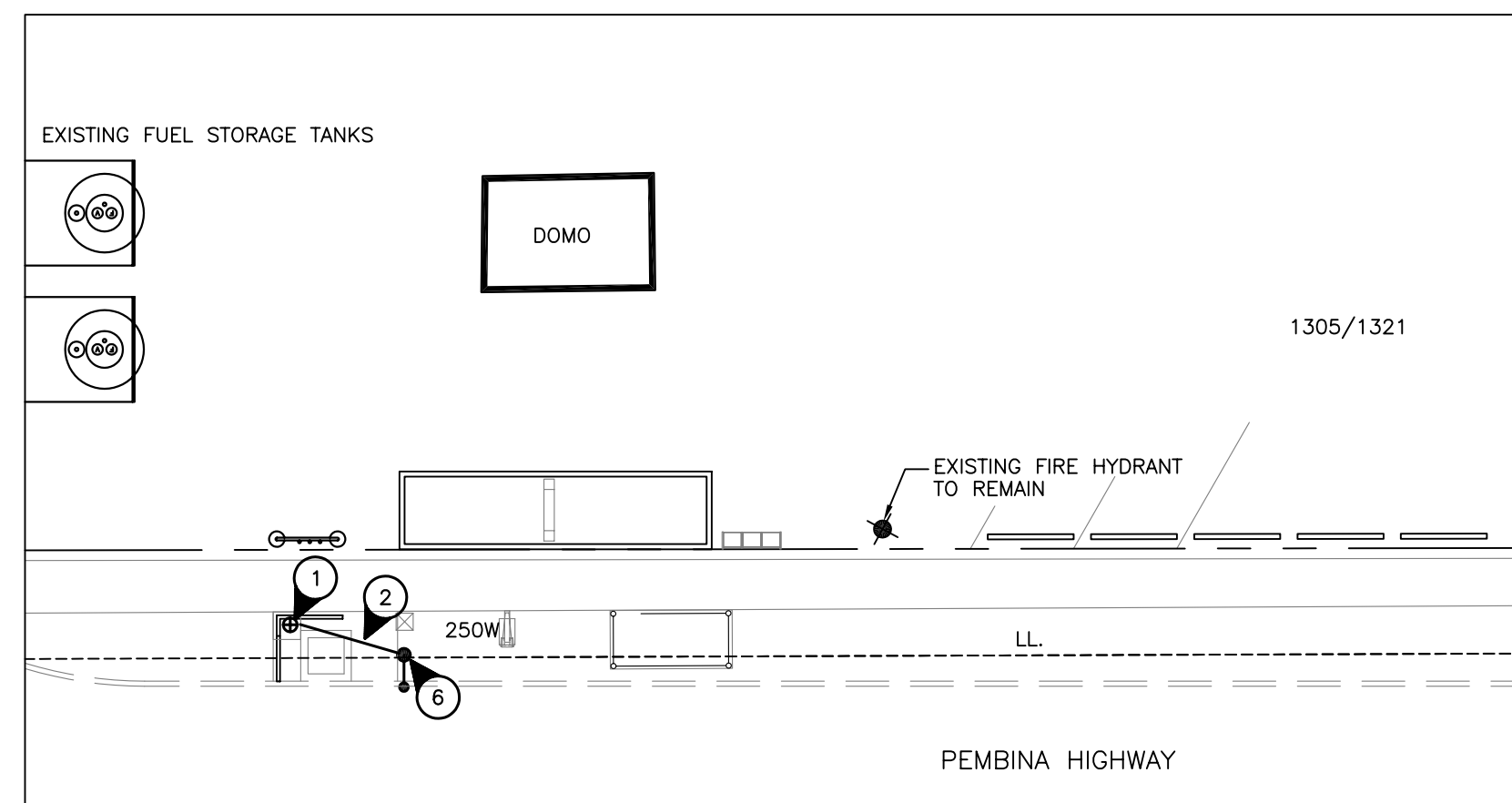
SOUTHBOUND PEMBINA FARSIDE WINDERMERE
STOP 60251 WINDERMERE



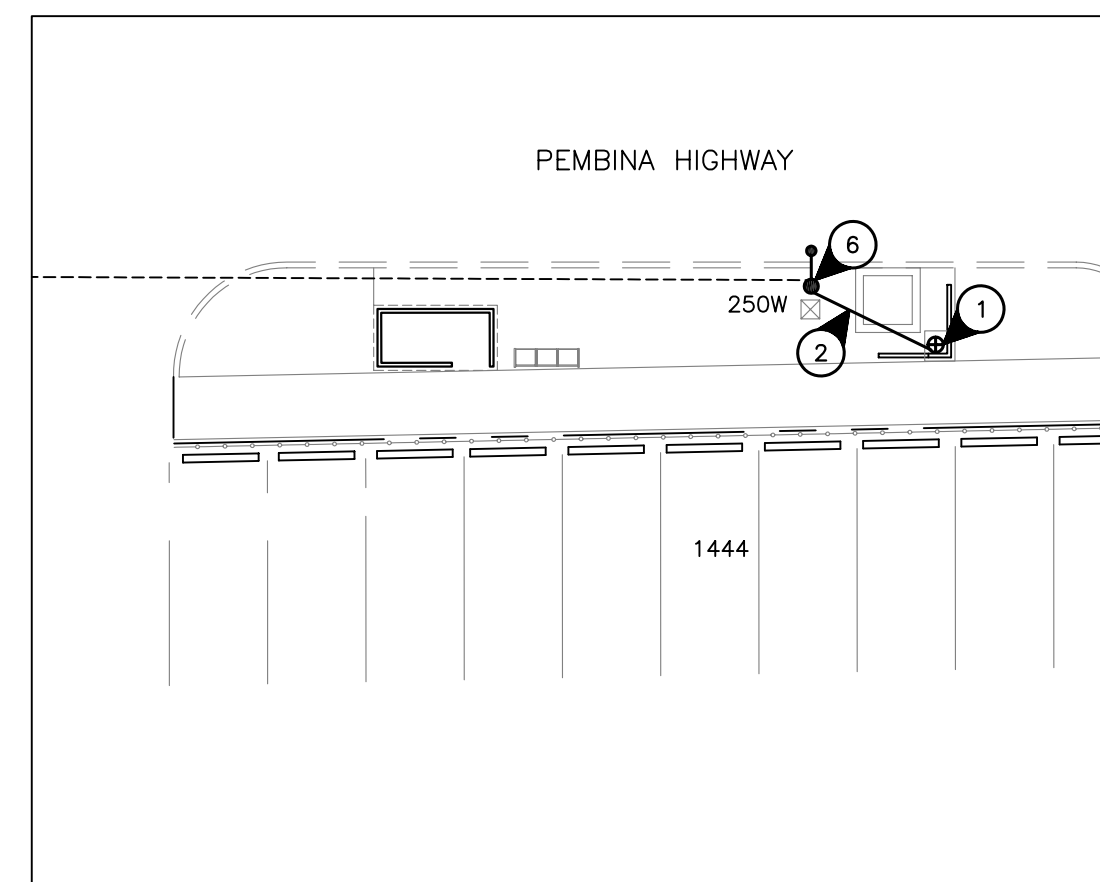
NORTHBOUND PEMBINA NEARSIDE POINT RD
STOP 60253 POINT ROAD



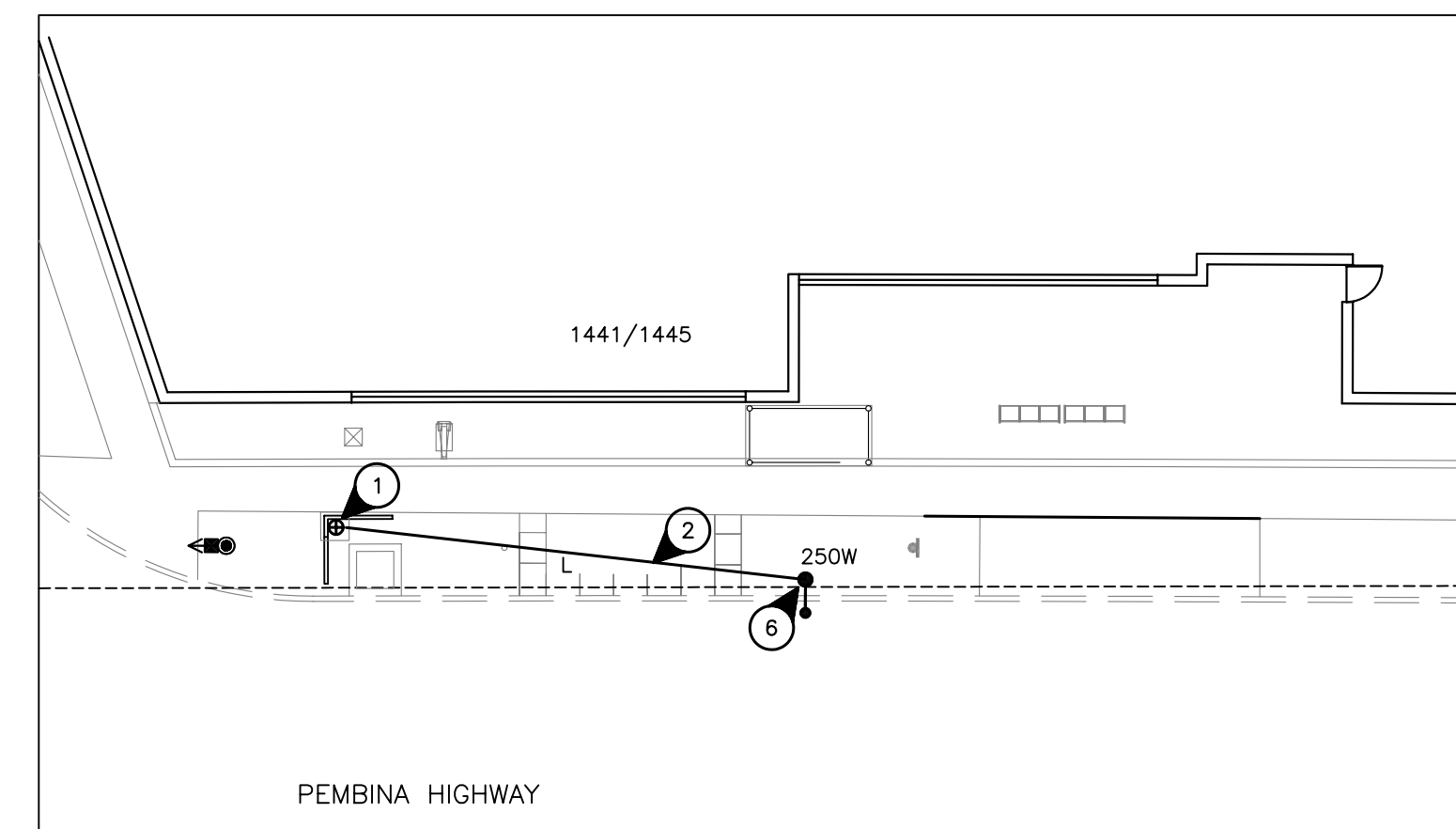
NORTHBOUND PEMBINA NEARSIDE OAKENWALD
STOP 60245 OAKENWALD



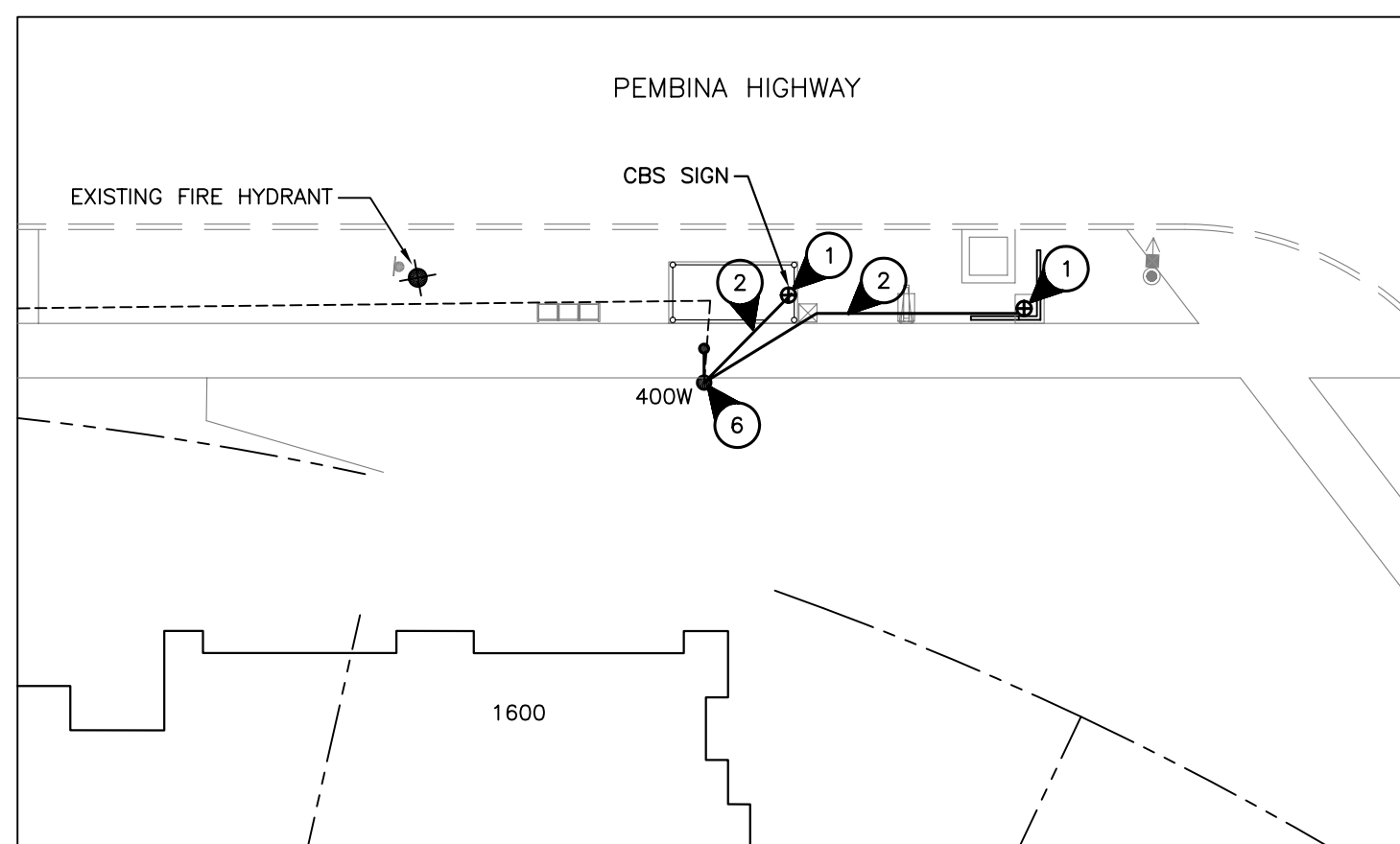
SOUTHBOUND PEMBINA FARSIDE MCGILLIVRAY
STOP 60246 MCGILLIVRAY



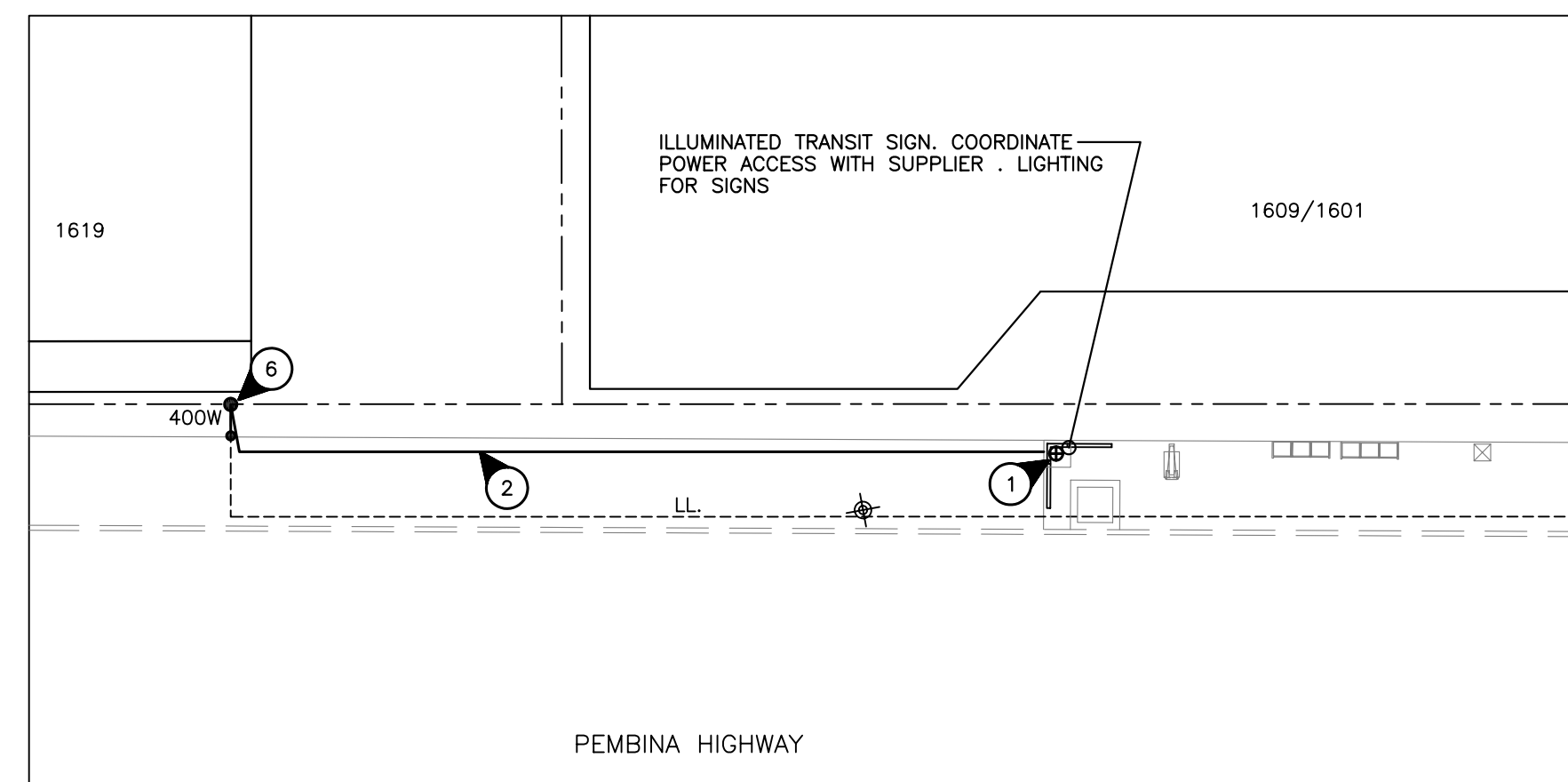
N.B. PEMBINA NEARSIDE FLETCHER
STOP 60240 FLETCHER



SOUTHBOUND PEMBINA NEARSIDE CLARENCE
STOP 60239 CLARENCE



NORTHBOUND PEMBINA NEARSIDE CRESCENT
STOP 60156 CRESCENT



SOUTHBOUND PEMBINA FARSIDE CHEVRIER
STOP 60155 CHEVRIER



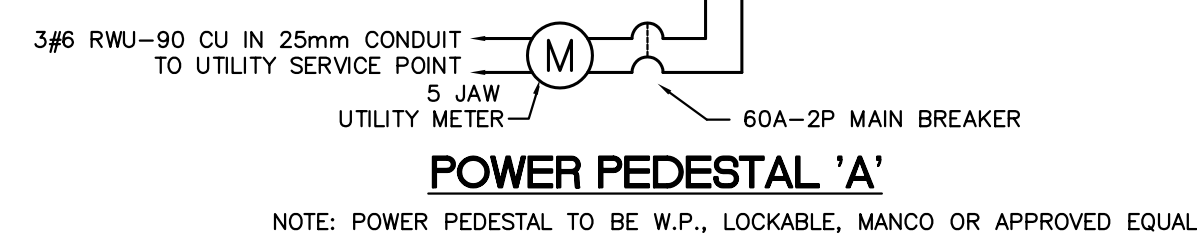
SPECIFIC ELECTRICAL NOTES

1. WIRE & CONNECT ILLUMINATED TRANSIT SIGN AS REQUIRED. COORDINATE EXACT LOCATION AND REQUIREMENTS WITH SIGNAGE SUPPLIER.
2. BURIED 2 #12 RWJ-90 CU AND GROUND IN A 25mm RIGID PVC CONDUIT. PROVIDE TRENCHING, BACKFILLING AND SURFACE REPAIR AS REQUIRED. PUSH BELOW SURFACE WHERE PRACTICAL.
3. CONNECT NEW SIGN TO MB HYDRO PAD MTD. TRANSFORMER. PROVIDE A 15A-1P WEATHER-PROOF SERVICE ENTRANCE RATED DISCONNECT AT SIGN (C/W CURRENT LIMITING FUSES). 347V-1PH
4. CONNECT NEW SIGN AND TRANSIT SHELTER LIGHTING AND HEATING CIRCUITS TO EXISTING POWER PEDESTAL. PROVIDE ONE 15A-1P C.B. FOR SHELTER LIGHTING AND ONE FOR SIGN LIGHTING. PROVIDE ONE 30A-2P AND ONE 15A-2P C.S. FOR HEATING, OR AS REQUIRED FOR ACTUAL HEATING LOAD. ALL C.B.'S TO MATCH EXISTING.
5. CONNECT NEW SIGN AND TRANSIT SHELTER LIGHTING AND HEATING CIRCUITS TO NEW POWER PEDESTAL 'A'. SEE DETAIL THIS DRAWING. CONNECT NEW PEDESTAL TO MB HYDRO OVERHEAD TRANSFORMER WITH 3# RWJ90 CU IN 25MM RIGID PVC CONDUIT.
6. CONNECT NEW SIGN TO EXISTING STREET LIGHT INDICATED. PROVIDE A 15A-2P WEATHER-PROOF SERVICE ENTRANCE RATED DISCONNECT AT SIGN (240V-1PH)

GENERAL ELECTRICAL NOTES

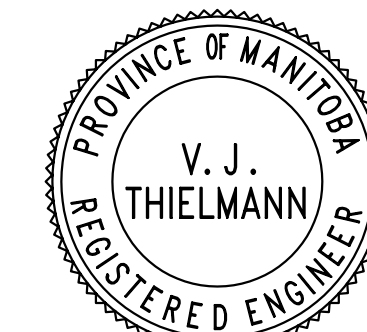
1. INSTALL JUNCTION BOX IN SHELTER TO PROVIDE POWER FOR LIGHTING AND HEATING CIRCUITS.
2. LABEL ELECTRICAL CIRCUIT AND DEVICES WITH LAMACOID PLATES.
3. LOCATE ALL EXISTING U/G SERVICES PRIOR TO TRENCHING.
4. MINIMUM WIRE SIZE #12.
5. ALL SERVICE POINTS TO BE COORDINATED WITH MB HYDRO.

PANEL 'A'		VOLTS: 120/208V/1#/3W	
MOUNTING: PEDESTAL		MAIN BUS: 100A	
LOCATION: PAD MOUNTED		REMARKS: C/W GROUNDING AS PER CEC	
DESCRIPTION	BKR	CIRCUIT	BKR
SIGN	15	1	2
ELECTRIC HTR #10 WIRE	30	3	4
ELECTRIC HTR	15	7	8
SPARE	15	11	12



POWER PEDESTAL 'A'

NOTE: POWER PEDESTAL TO BE W.P., LOCKABLE, MANCO OR APPROVED EQUAL



NOVA 3 ENGINEERING LTD.
CONSULTING ENGINEERS
201-120 FORT STREET W. WINNIPEG, MANITOBA R3C 1C7
TEL: (204) 943-6142 FAX: (204) 942-1276

No.	Revisions	Date	By
Date Scale			
21-06-06		1:200	
Designed By	Drawn By	Checked By	
DZ	DZ	VJT	



WINNIPEG TRANSIT
Project Title
BUS STOP UPGRADE PROGRAM PHASE 1

Sheet Title
ELECTRICAL PLANS
1 of 2

Project No. 26-173 Drawing No. E1.1