

OPERATION

Trouble Condition

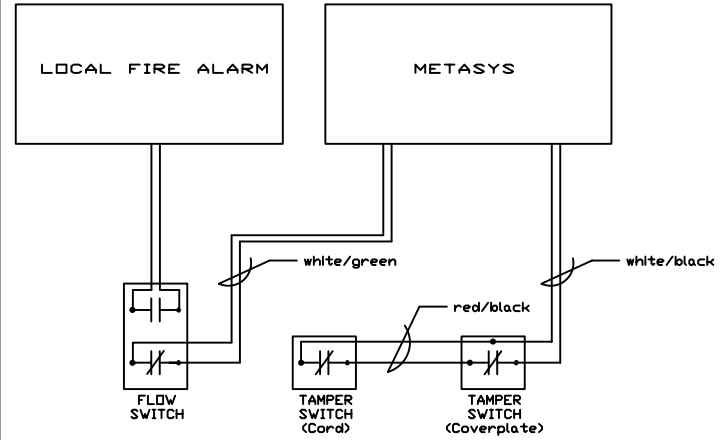
Two conditions will cause a TROUBLE.

- 1) Tamper Switch (Cord)
When the tamper switch cord is disconnected from the tamper switch coverplate, the supervisory circuit will open circuit and report a trouble condition to the Metasys computer at 421 Osborne.
- 2) Tamper Switch (Coverplate)
When the tamper switch coverplate is removed from the electrical junction box, the supervisory circuit will open circuit and report a trouble condition to the Metasys computer at 421 Osborne.

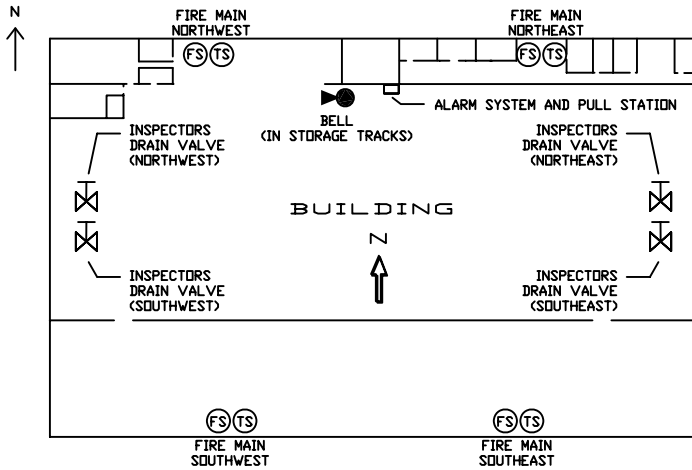
Alarm Condition

One condition will cause an ALARM.

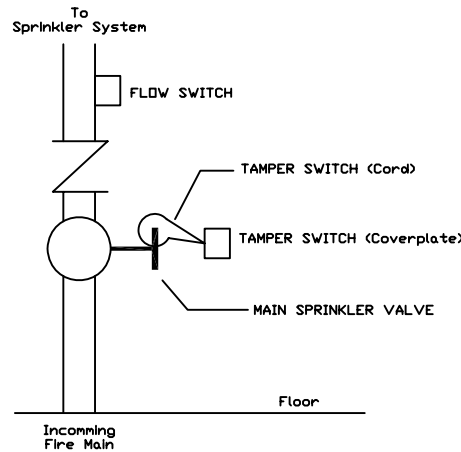
- 1) Flow Switch
This switch will operate if it detects the flow of water in the sprinkler system. This switch serves two purposes:
 - 1) The supervisory circuit will open and report an alarm condition to the Metasys computer at 421 Osborne.
 - 2) The local fire alarm circuit will close and operate the fire bell.



Wiring Diagram



Plan View



Elevation

LOCATION	DESCRIPTION	METASYS OBJECT NAME	XBN-2 SLOT
N.W. (MECHANICS)	FLOW	SPR1-F	19
	TAMPER	SPR1-T	20
N.E. (CANTEEN)	FLOW	SPR2-F	21
	TAMPER	SPR2-T	22
S.W. (TRK 1 ENT)	FLOW	SPR3-F	23
	TAMPER	SPR3-T	24
S.E. (TRK 1 EXIT)	FLOW	SPR4-F	25
	TAMPER	SPR4-T	26

METASYS Points

NORTH GARAGE 1520 MAIN STREET BUILDING FIRE ALARM SYSTEM	REVISION 0
	REF NO NG_021
	DRAWING NO. FA002