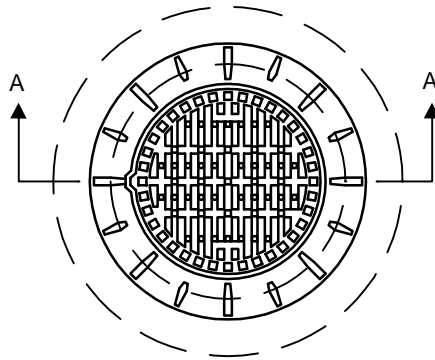


**NOTE:** EACH CATCH BASIN TO HAVE SEPARATE CONNECTION TO SEWER OR MANHOLE

USE PREFORMED BITUMINOUS GASKET BETWEEN REDUCER AND BARREL SECTION



STANDARD FRAME (AP-004)  
AND STANDARD GRATED  
COVER (AP-006)

**PLAN**

FINISHED BOULEVARD GRADE

MAXIMUM 2 - 750Ø PRECAST  
CONCRETE ADJUSTING RINGS

900 DIA. x 750 DIA. PRECAST  
CONCRETE REDUCER

900 DIA. PRECAST CONCRETE  
CATCH BASIN BARREL TO  
ASTM C 478 AND C 76 CL II

INITIAL BACKFILL IN ACCORDANCE  
WITH CW 2030 AND SD-001

APPROVED CATCH BASIN  
HOOD

MINIMUM 250 DIA. CATCH BASIN  
LEAD TO SEWER OR MANHOLE

BEDDING IN ACCORDANCE  
WITH CW 2030 AND SD-001

PRECAST CONCRETE  
BASE

19 DIA. RUNGS  
AT 300 O.C.

SPECIFIED BACKFILL  
IN ACCORDANCE WITH  
CW 2030 AND SD-002

100  
MIN.  
200

1800

600

100

**SECTION A - A**

DIMENSIONS IN MILLIMETERS



**THE CITY OF WINNIPEG**  
**WATER & WASTE DEPARTMENT**

Reference Spec. No.

CW 2030 CW 2130

STANDARD PRE-CAST  
CONCRETE CATCH BASIN  
IN BOULEVARD

Designed By:  
LSWL / TW

Drawn By:  
BH

Scale:  
N.T.S.

Checked By:  
TW

Date: 05-02-22  
Revision: 1

Drawing No.

Approved:  
UNDERGROUND WORKS COMMITTEE

SD-025