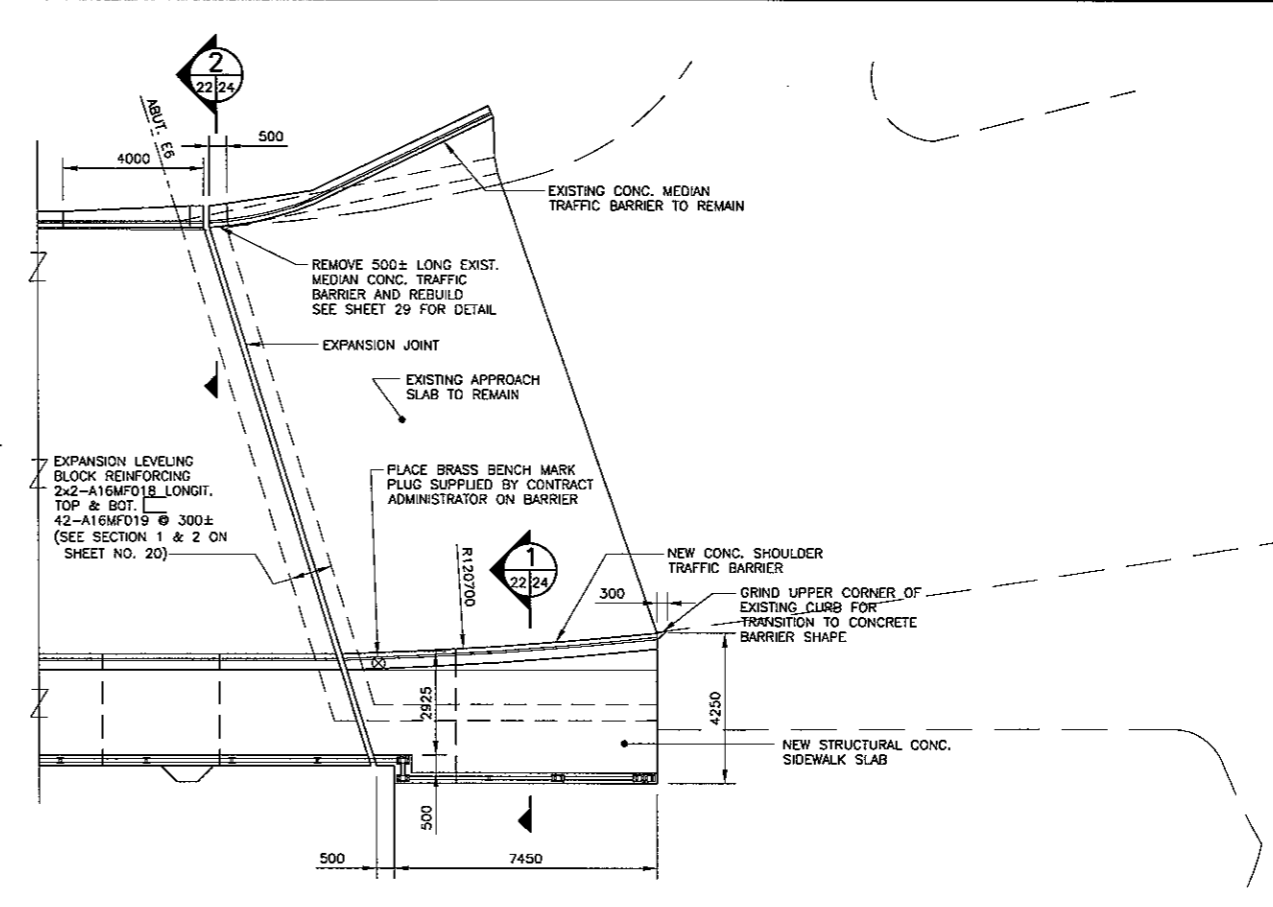
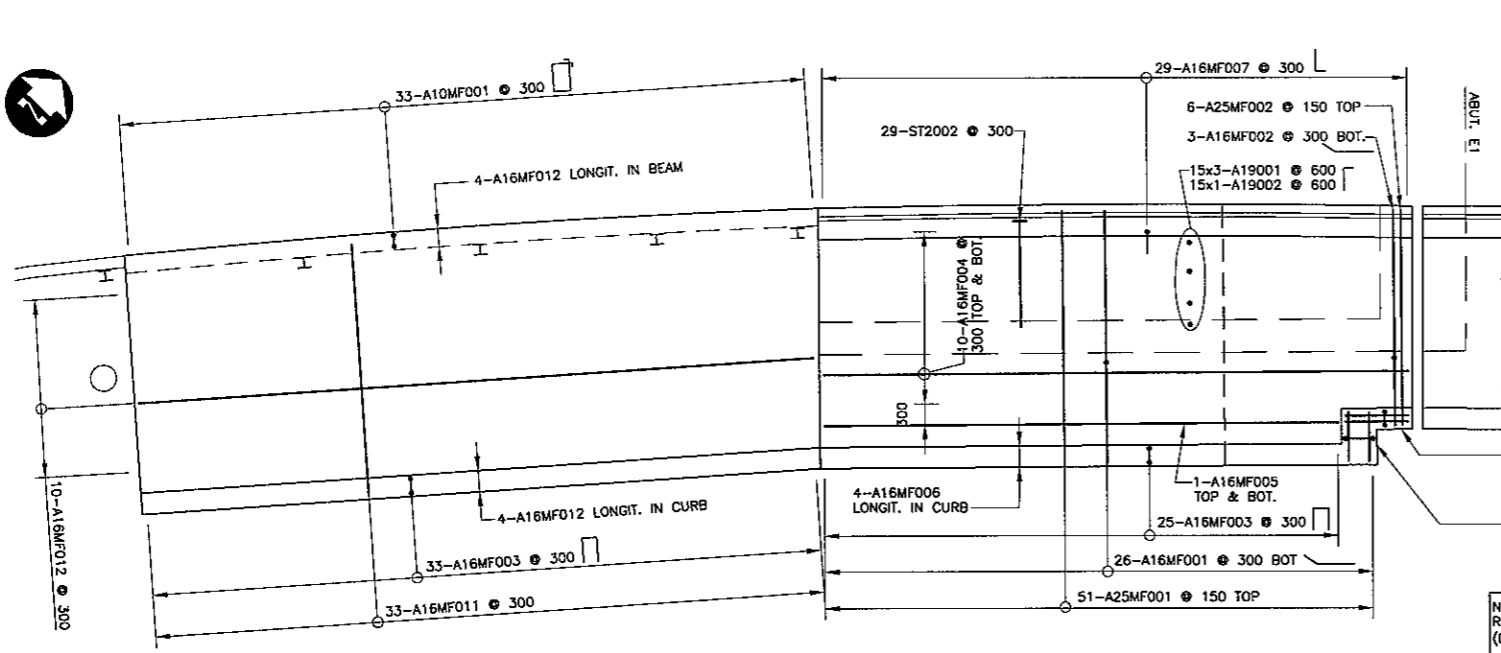


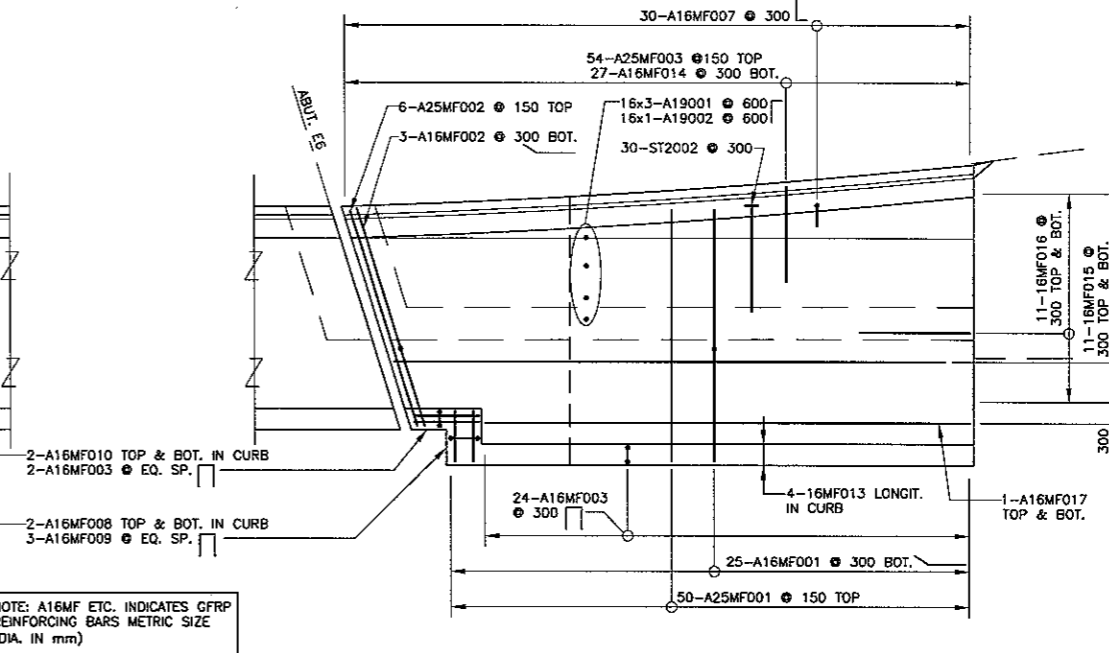
PLAN-SOUTH APPROACH
1: 100



PLAN-NORTH APPROACH
1: 100



SIDEWALK REINFORCING-SOUTH APPROACH
1: 50



SIDEWALK REINFORCING-NORTH APPROACH
1: 50

B.M. ELEV.	DESIGNED BY	A.S.D.					MARYLAND TWIN BRIDGES REHABILITATION PROJECT EAST BRIDGE REHABILITATION	CITY DRAWING NUMBER	B108-06-22
	DRAWN BY	N.B.G.						SHEET	22 OF 38
	CHECKED BY	R.A.W.							
	REVIEWED BY	S.S.R.							
2	ISSUED FOR TENDER	02/02/06	N.B.G.	HOR. SCALE	AS NOTED	CONSULTANT PROJECT NO.	05-5069-1000		
1	ISSUED FOR CITY REVIEW	12/14/05	N.B.G.	VERTICAL					
NO. REVISIONS			DATE	DEC. 2005	DATE				