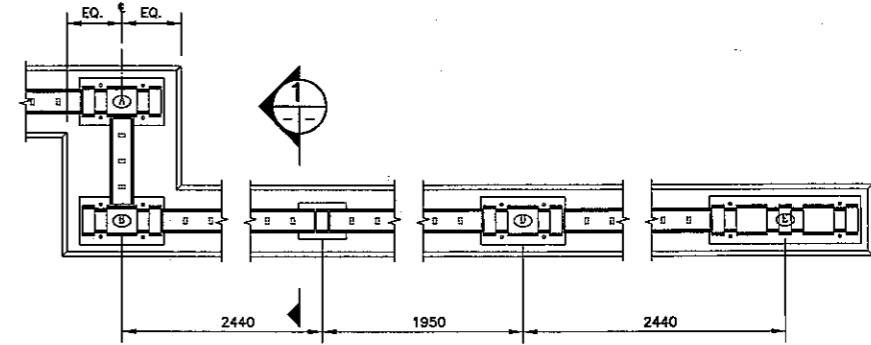


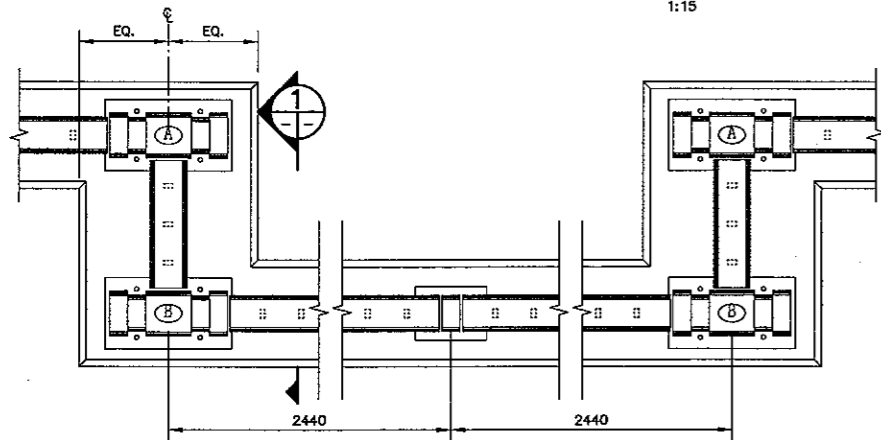
PLAN VIEW SOUTH APPROACH HANDRAIL

1:15



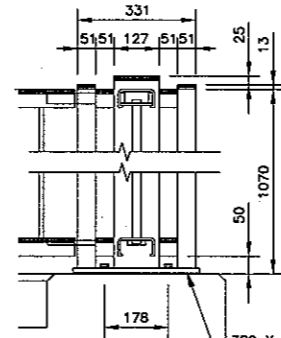
PLAN VIEW NORTH APPROACH HANDRAIL

1:15



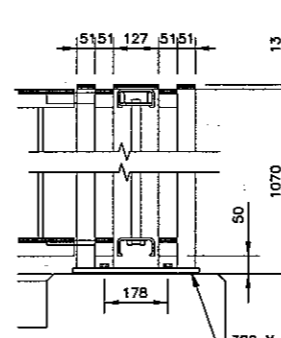
PLAN VIEW TYPICAL REST AREA

1: 10



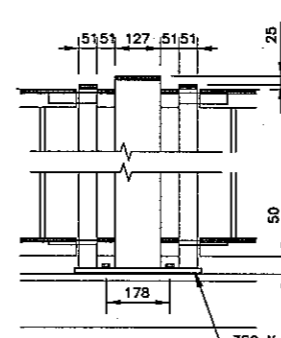
POST TYPE A

1: 10



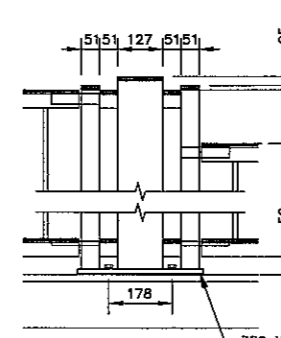
POST TYPE B

1: 10



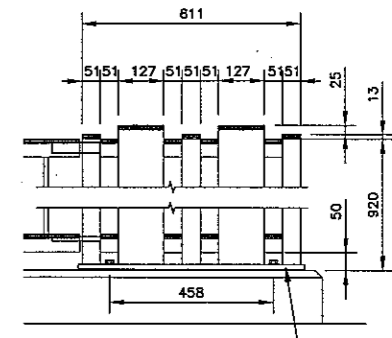
POST TYPE C

1: 10



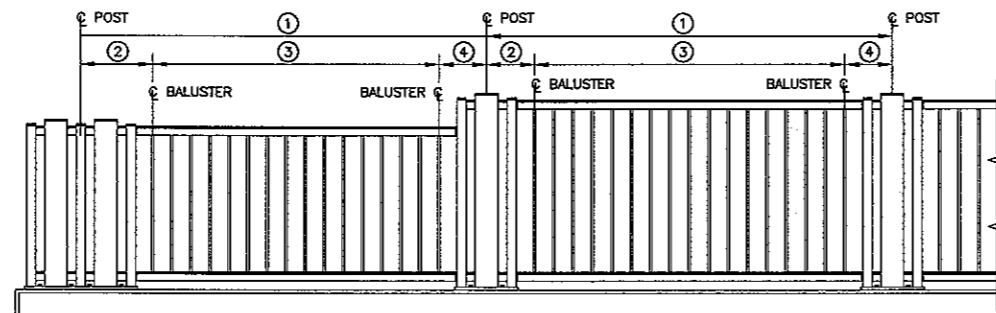
POST TYPE D

1: 10



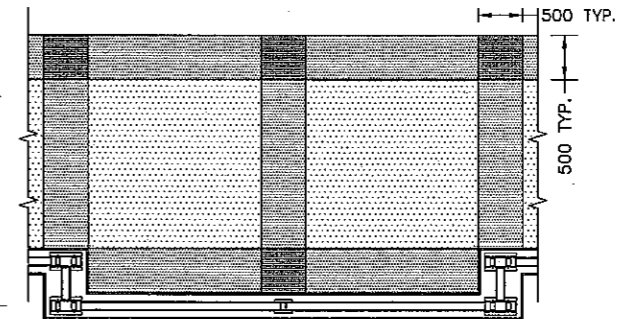
POST TYPE E

1: 10



ELEVATION OF SOUTH END OF HANDRAIL

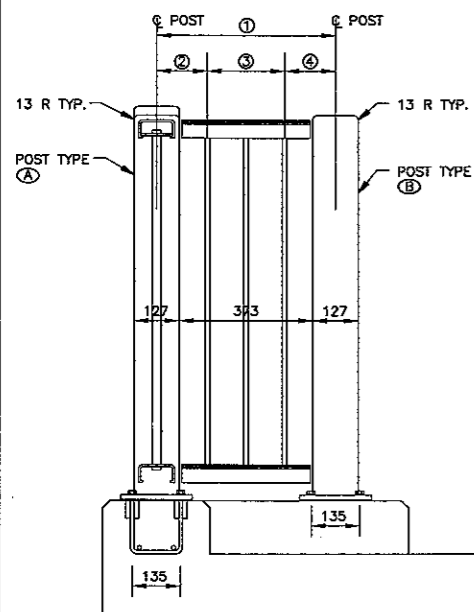
1: 20



PAVING PATTERN - TYPICAL REST AREA

1: 40

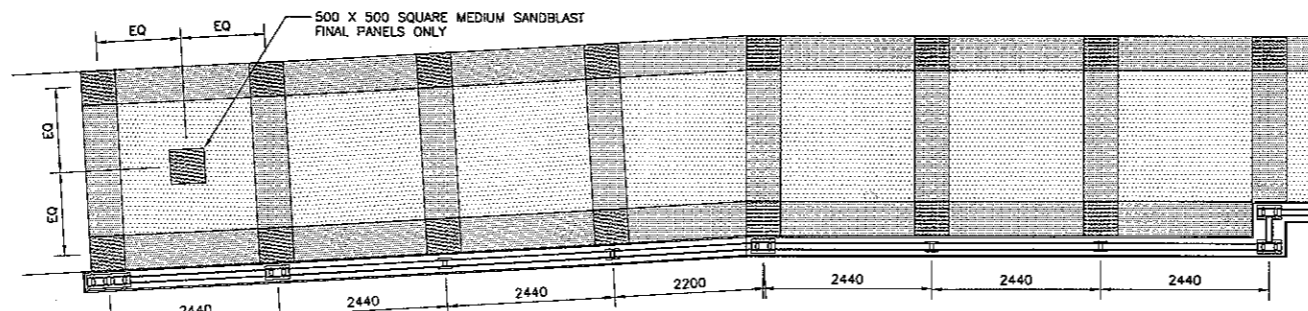
**NOTE:**  
ADD TWO (2) 500 X 500 SQUARES (MEDIUM SANDBLAST) IN CORRESPONDING LOCATIONS ON EXISTING WEST BRIDGE SIDEWALK.



SECTION

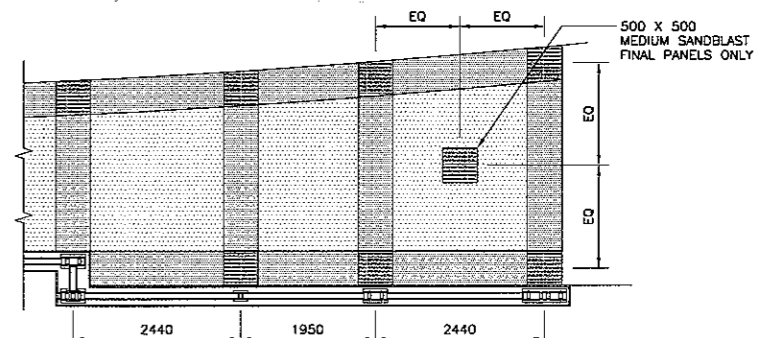
1: 10

- BROOM FINISH
- LIGHT SANDBLAST
- MEDIUM SANDBLAST



PAVING PATTERN - SOUTH APPROACH

1: 50



PAVING PATTERN - NORTH APPROACH

1: 50

DESIGNED BY	R.G.M.	ENGINEER'S SEAL
DRAWN BY	G.C.L.	
CHECKED BY	R.G.M.	
REVIEWED BY	R.A.W.	
2 ISSUED FOR TENDER	02/02/06 N.B.G.	HOR. SCALE AS NOTED
1 ISSUED FOR CITY REVIEW	12/14/05 N.B.G.	VERTICAL SCALE AS NOTED
NO. REVISIONS	DATE BY	DATE

**DILLON CONSULTING**

RELEASED FOR CONSTRUCTION

DATE 01-31-06

WILDERMAN THOMAS FRANK & CREW

ENGINEER'S SEAL

Glen M. ...

CONSULTANT PROJECT NO. 05-5069-1000

**THE CITY OF WINNIPEG**  
PUBLIC WORKS DEPARTMENT

Winnipeg

**MARYLAND TWIN BRIDGES REHABILITATION PROJECT**  
EAST BRIDGE REHABILITATION

CITY DRAWING NUMBER B108-06-26  
SHEET 26 OF 38

CUSTOM PEDESTRIAN HANDRAIL AND SIDEWALK FINISHING DETAILS