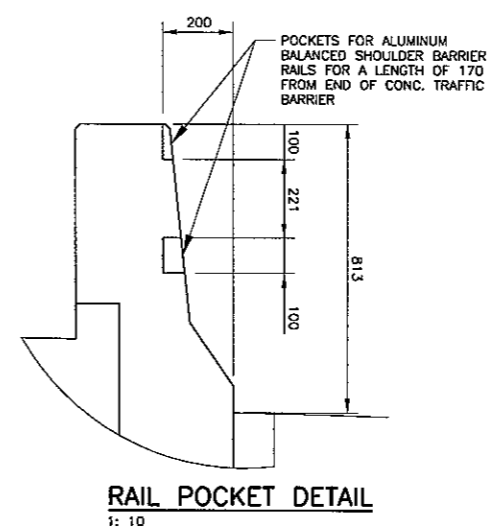
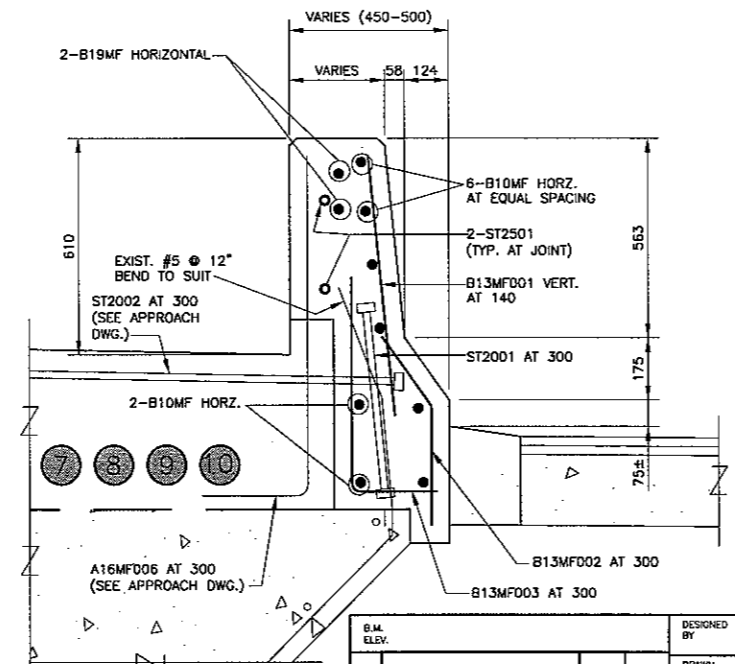
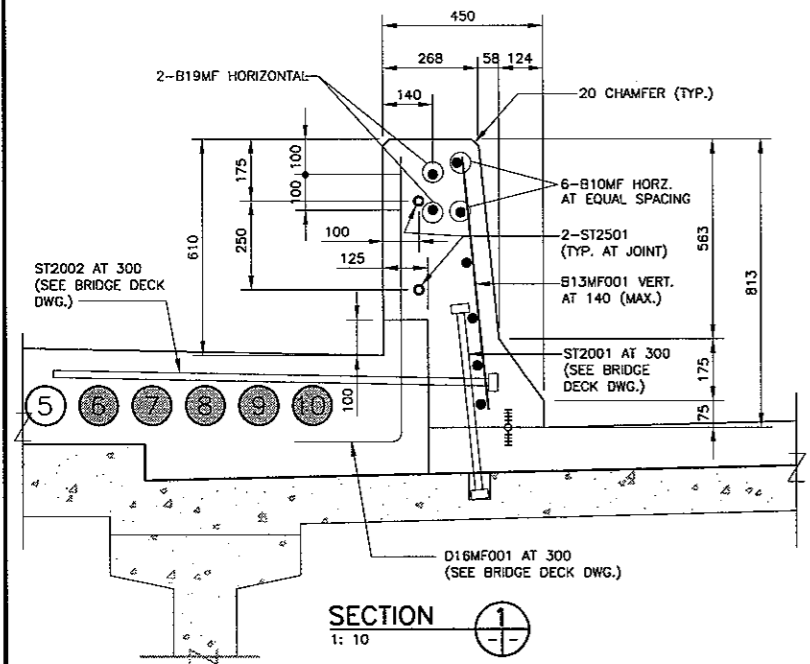


**CONCRETE SHOULDER TRAFFIC BARRIER LAYOUT**

1: 50



**CONCRETE TRAFFIC BARRIER REINFORCEMENT**

PANEL TYPE	QUANTITY	REINFORCEMENT		EXTRA REBARS AT RAIL POST LOCATION
		VERT. BARS	HORIZONTAL BARS	
SP1	23	41-B13MF001	2-B19MF001 6-B10MF001	NOT REQUIRED
SP2	1	23-B13MF001 11-B13MF002 11-B13MF003 11-ST2001	2-B19MF002 8-B10MF002	DOWELS AT JOINT LOCATION (34-JOINTS) 68-ST2501
SP3	2	24-B13MF001	2-B19MF003 6-B10MF003	
SP4	2	29-B13MF001	2-B19MF004 6-B10MF004	
SP5	2	29-B13MF001	2-B19MF005 6-B10MF005	
SP6	2	31-B13MF001	2-B19MF006 6-B10MF006	
SP7	1	39-B13MF001	2-B19MF007 6-B10MF007	
SP8	1	24-B13MF001	2-B19MF008 6-B10MF008	
SP9	1	19-B13MF001 10-B13MF002 10-B13MF003 10-ST2001	2-B19MF009 8-B10MF009	
SP10	2	41-B13MF001 20-B13MF002 20-B13MF003 20-ST2001	2-B19MF010 8-B10MF010	

DESIGNED BY A.S.D./N.B.G.				<b>THE CITY OF WINNIPEG</b> PUBLIC WORKS DEPARTMENT
DRAWN BY N.B.G.				
CHECKED BY R.A.W.	CONSULTANT PROJECT NO. 05-5069-1000	CITY DRAWING NUMBER B108-06-27		
REVIEWED BY S.S.R.		SHEET 27 OF 38	SHOULDERS TRAFFIC BARRIER LAYOUT AND DETAILS	
NO. REVISIONS	DATE	DATE	DATE	DATE