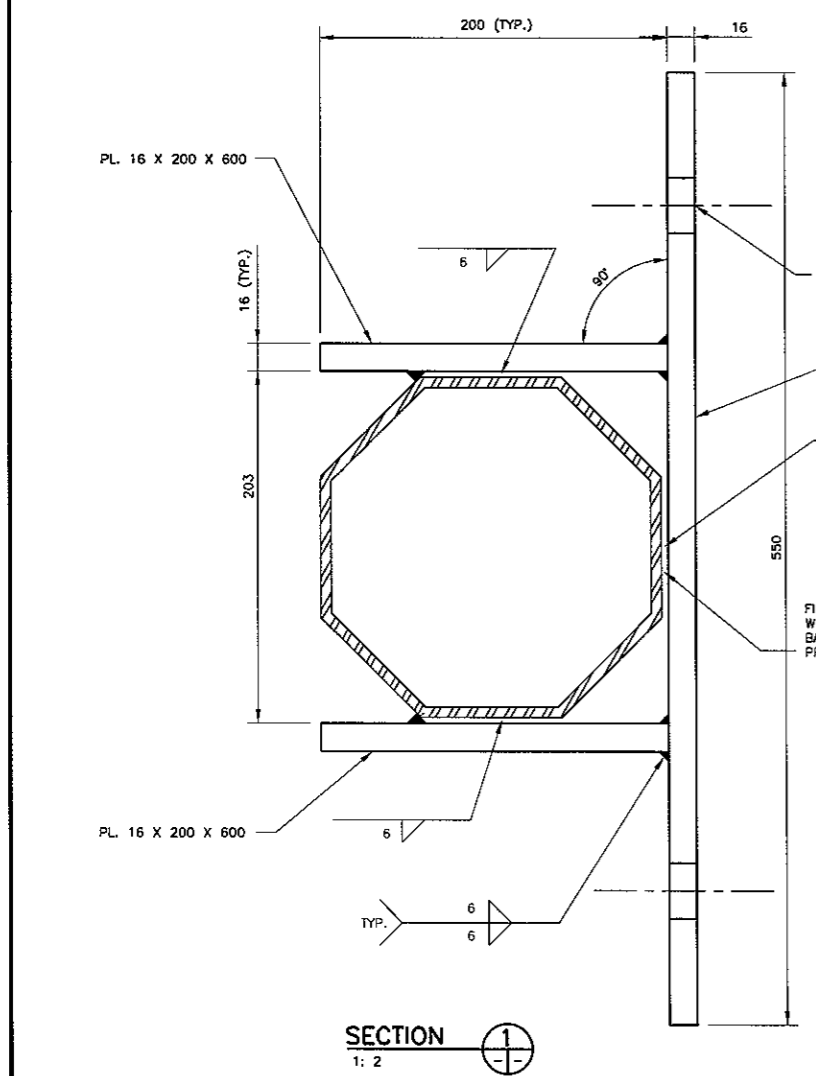
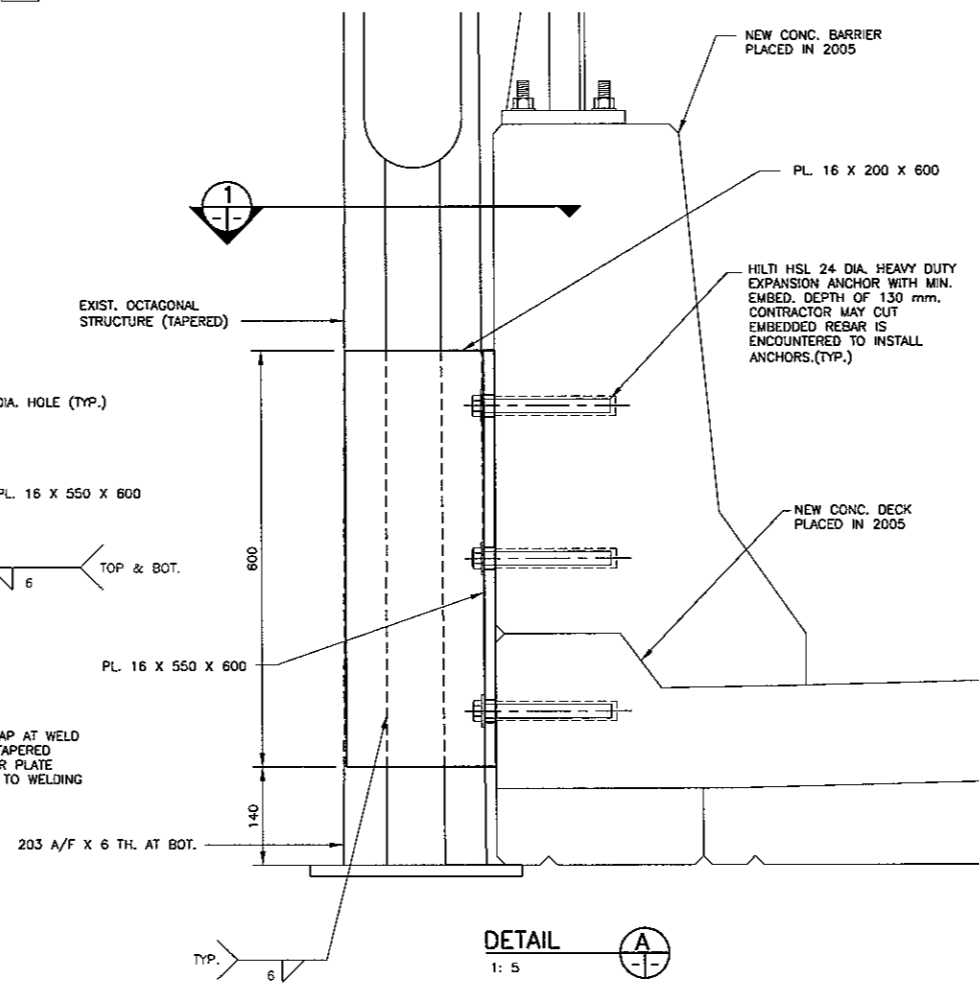


**ELEVATION - TEMPORARY OHSS**  
1: 50      LOOKING SOUTH

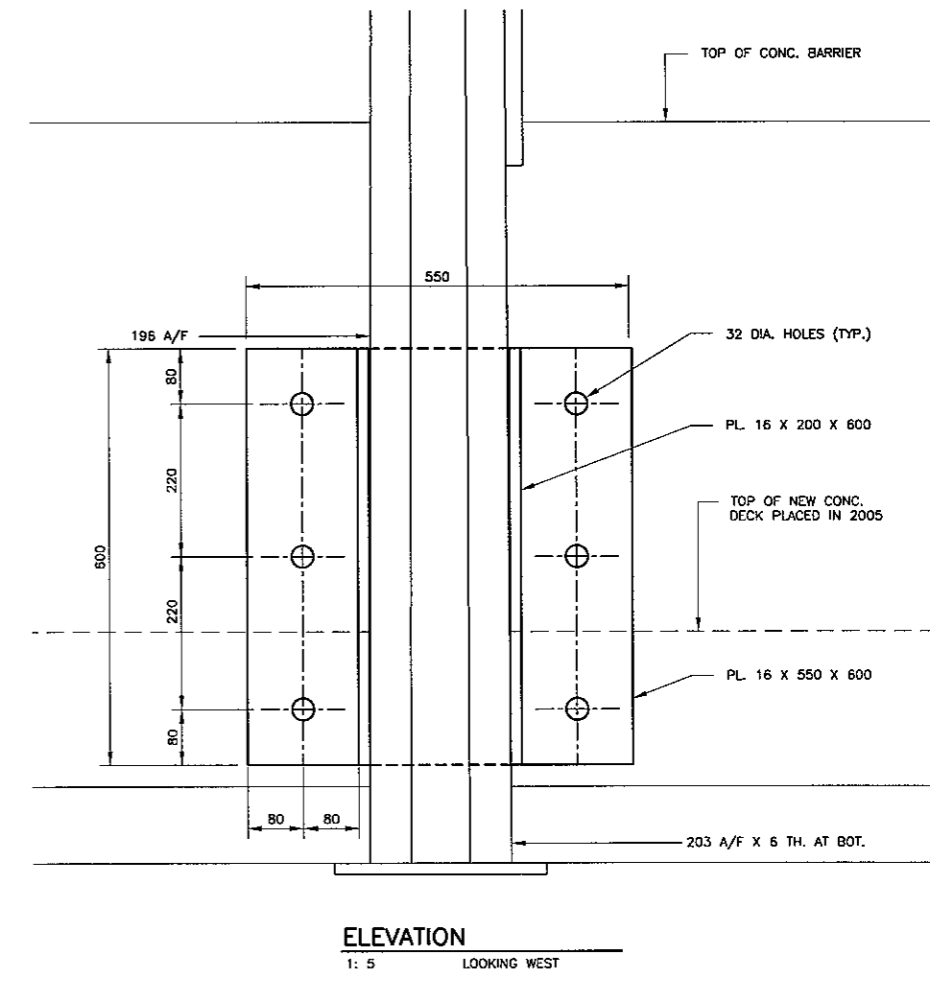
- NOTES:**
1. STRUCTURAL STEEL: CAN/CSA G40.21 - GRADE 350W
  2. WELDING ELECTRODES: E48016 OR E48018 CONFORMING TO CSA 48.1
  3. CITY OF WINNIPEG WILL SUPPLY THE 2 OVERHEAD SIGN STRUCTURES (OHSS'S) COMPLETE WITH FABRICATED ANCHOR PLATE ATTACHMENT TO THE CONTRACTOR AND PROVIDE THE CRANE TO LIFT THE STRUCTURES INTO PLACE. THE CONTRACTOR TO SUPPLY AND INSTALL THE ANCHORS AND FASTEN THE OHSS'S TO THE ANCHORS. UPON COMPLETION OF THE PROJECT THE CITY WILL AGAIN SUPPLY THE CRANE FOR THE CONTRACTOR TO DISCONNECT THE OHSS'S FROM THE BRIDGE. THE CONTRACTOR THEN TO REMOVE THE ANCHORS AND MORTAR FILL THE HOLES.



**SECTION**  
1: 2



**DETAIL**  
1: 5



**ELEVATION**  
1: 5      LOOKING WEST

B.M. ELEV.	DESIGNED BY A.S.D.		ENGINEER'S SEAL PROVINCE OF MANITOBA Jan 27/06 S.S. RIHAL REGISTERED PROFESSIONAL	ENGINEER'S SEAL PROVINCE OF MANITOBA Jan 27/06 A.S. DERAJ REGISTERED PROFESSIONAL	<b>THE CITY OF WINNIPEG</b> PUBLIC WORKS DEPARTMENT MARYLAND TWIN BRIDGES REHABILITATION PROJECT EAST BRIDGE REHABILITATION TEMPORARY OVERHEAD SIGN STRUCTURE ON WEST STRUCTURE FOR DETOUR	CITY DRAWING NUMBER B108-06-38
	DRAWN BY M.R.D.		CONSULTANT PROJECT NO. 05-5069-1000	SHEET 38 OF 38		
	CHECKED BY R.A.W.	RELEASED FOR CONSTRUCTION DATE 01-27-06				
	REVIEWED BY S.S.R.	HOR. SCALE AS NOTED				
1	ISSUED FOR TENDER	DATE 02/02/06				
NO.	REVISIONS	DATE				