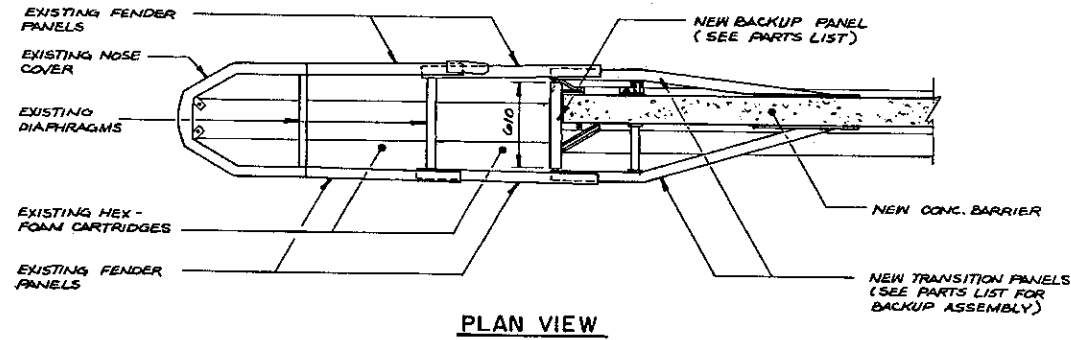
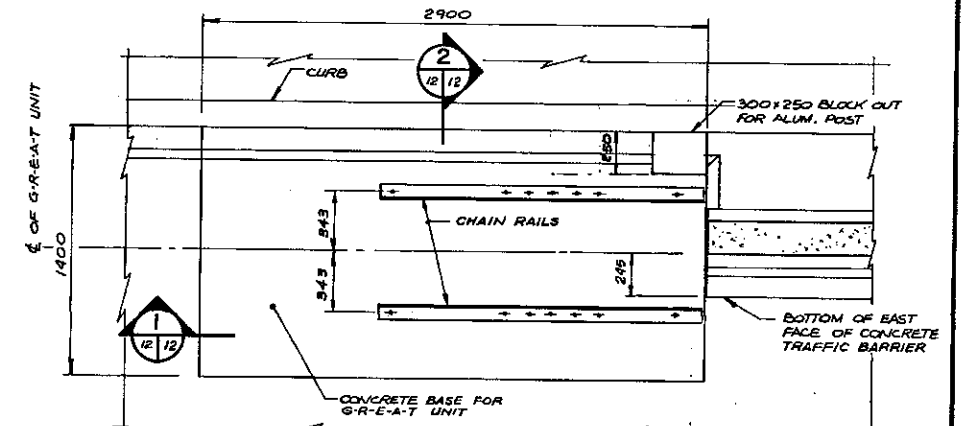


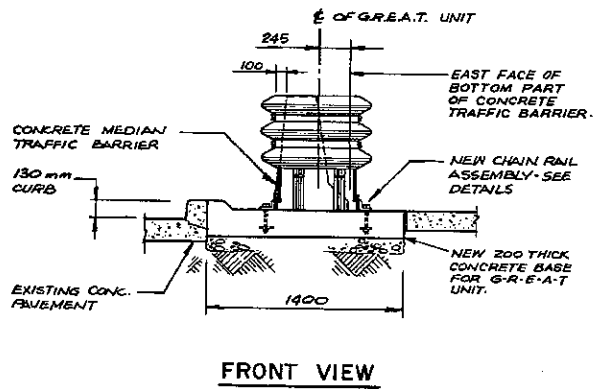
**DETAIL OF EXISTING TENSION STRUT BACKUP - (TO BE REMOVED AND TURNED OVER TO OWNER) N.T.S.**



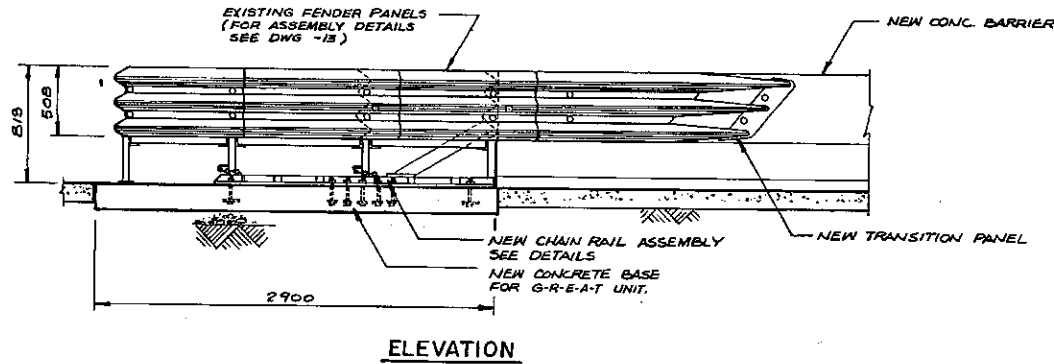
**PLAN VIEW**



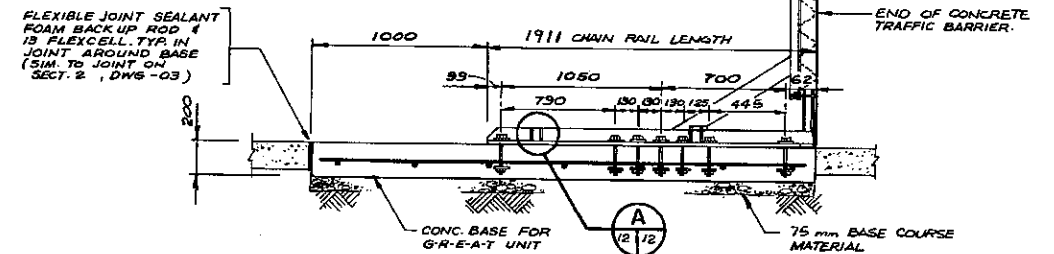
**PLAN VIEW SCALE 1:20**



**FRONT VIEW**

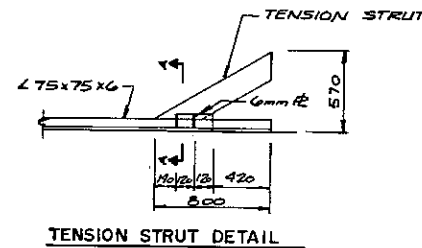


**ELEVATION**

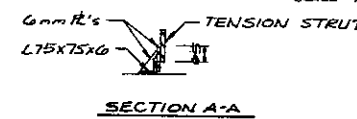


**SECTION SCALE 1:20**

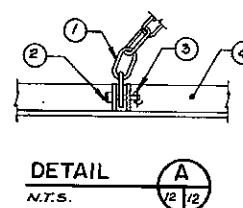
**GENERAL ARRANGEMENT OF RELOCATED AND MODIFIED G-R-E-A-T UNIT SCALE = 1:25**



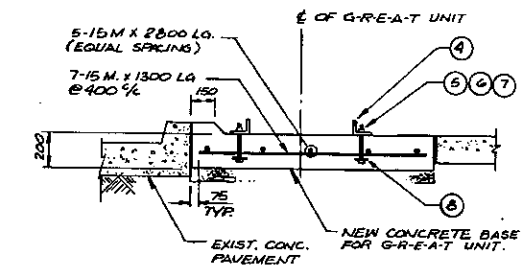
**TENSION STRUT DETAIL**



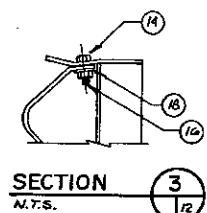
**SECTION A-A**



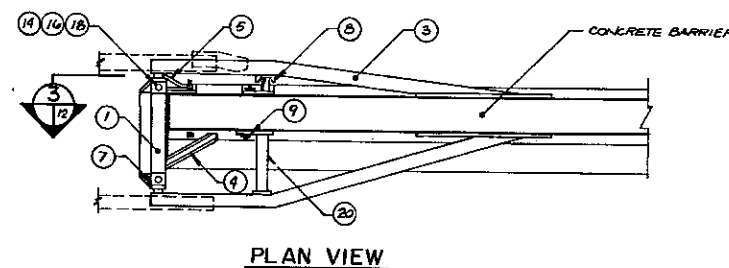
**DETAIL N.T.S.**



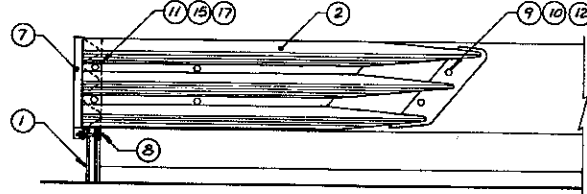
**SECTION SCALE 1:20**



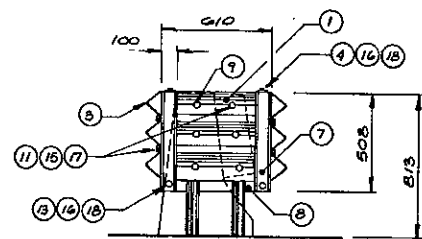
**SECTION N.T.S.**



**PLAN VIEW**



**ELEVATION**



**FRONT VIEW**

PARTS LIST FOR BACKUP ASSEMBLY *			
ITEM	STOCK NO.	DESCRIPTION	REQ'D
1	27-03-211	BACKUP	1
2		MODIFIED TRANSITION PANEL	1
3	27-52-281	TRANSITION PANEL	1
4	27-52-191	BACKUP ATTACHMENT BRACKET (R)	1
5	27-52-201	BACKUP ATTACHMENT BRACKET (L)	1
6	27-52-271	SUPPORT BRACKET	1
7	27-52-591	CARTRIDGE SUPPORT BRACKET	1
8	27-52-141	CLAMPING BAR	1
9	27-01-261	19 mm x 120 mm CONC. ANCHOR BOLT	14
10	27-01-661	19 mm Ø FLUSH ANCHOR	4
11	27-01-381	19 mm x 50 mm H.H. BOLT	14
12	27-01-641	19 mm x 32 mm H.H. BOLT	4
13	27-01-331	10 mm x 119 mm H.H. BOLT	2
14	27-01-221	10 mm x 25 mm H.H. BOLT	14
15	27-04-091	19 mm Ø H.H. NUT	14
16	27-04-081	10 mm Ø H.H. NUT	2
17	27-08-081	19 mm Ø FLAT WASHER	14
18	27-08-021	10 mm Ø FLAT WASHER	2
19	27-08-201	19 mm Ø LOCK WASHER	14
20		MODIFIED SUPPORT BRACKET	1

PARTS LIST FOR CHAIN RAIL ASSEMBLY *			
ITEM	STOCK NO.	DESCRIPTION	REQ'D
1	27-52-021	PROOF COIL CHAIN 12 mm (9 LINKS)	4
2	27-02-101	16mm Ø x 50 CLEVIS PIN	4
3	27-02-111	PIN KEEPER SPRING 5.5.25mm Ø	4
4	27-22-033	CHAIN RAIL (1775 mm LG.)	1/2 LR
5		19 mm Ø x 215 BOLT (3/16 S.S.)	6
6	27-04-091	19 mm Ø H.H. NUT (3/16 S.S.)	6
7	27-08-081	19 mm Ø H.H. WASHER (3/16 S.S.)	6
8		70 x 70 x 25 R 9/16 20 mm Ø HOLE	6

**NOTES:**  
 1 - USE CHAIN RAILS AS A TEMPLATE TO LOCATE CONCRETE ANCHOR BOLTS ON THE CONCRETE PAD.  
 2 - ANCHOR BOLTS 5/8 PLATES MUST BE CAST IN CONCRETE PAD. SUBSTITUTION OF DRILLED IN ANCHOR BOLTS WILL NOT BE PERMITTED.

**RECORD DRAWING**  
 APPROVED: [Signature] DATE: MARCH 14/88

**DETAILS OF NEW BACKUP ASSEMBLY FOR CONCRETE MEDIAN BARRIER SCALE = 1:20**

**DETAILS OF NEW CONCRETE BASE AND CHAIN RAIL ASSEMBLY SCALE = 1:20**

**LOCATION APPROVED UNDERGROUND STRUCTURES**  
 Not Applicable SR  
 SUPPLY UNDER STRUCTURES COMMITTEE  
 NOTE: LOCATION OF UNDERGROUND STRUCTURES AS SHOWN ARE BASED ON THE BEST INFORMATION AVAILABLE BUT NO GUARANTEE IS GIVEN THAT ALL EXISTING UTILITIES ARE SHOWN OR THAT THE GIVEN LOCATIONS ARE EXACT. CONFIRMATION OF EXISTENCE AND EXACT LOCATION OF ALL SERVICES MUST BE OBTAINED FROM THE INDIVIDUAL UTILITIES BEFORE PROCEEDING WITH CONSTRUCTION.

NO.	REVISIONS	DATE	BY

**DILLON**  
 Consulting Engineers - Planners  
 Environmental Scientists

DESIGNED BY: R.A.W. CHECKED BY: R.A.W.  
 DRAWN BY: K.P.C. APPROVED BY: [Signature]  
 HOR SCALE: AS SHOWN  
 VERTICAL: AS SHOWN  
 DATE: MAR. 88

ENGINEER'S SEAL  
 PROVINCE OF MANITOBA  
 R.A. WIEBE  
 REGISTERED ENGINEER  
 CONSULTANT DRAWING NO.

**THE CITY OF WINNIPEG**  
 WORKS AND OPERATIONS DIVISION

**MARYLAND BRIDGE**  
 REPLACEMENT OF WEST (MEDIAN) BRIDGE RAIL OF NORTHBOUND STRUCTURE

MODIFICATIONS TO EXISTING G-R-E-A-T UNIT

CITY DRAWING NUMBER: B108-88-12  
 SHEET OF: [Blank]  
 B-5790-12

AUTHORIZED BY: [Signature] 1988-05-19  
 ACCEPTED BY: [Signature] 18 05 19  
 BRIDGE ENGINEER DATE