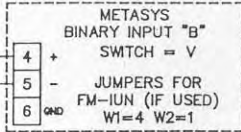
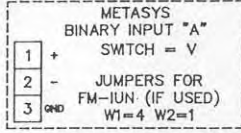
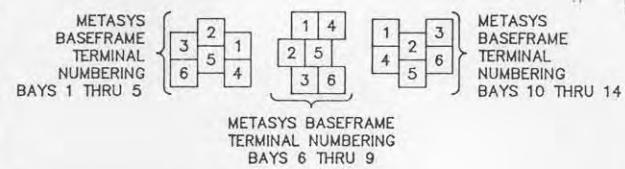


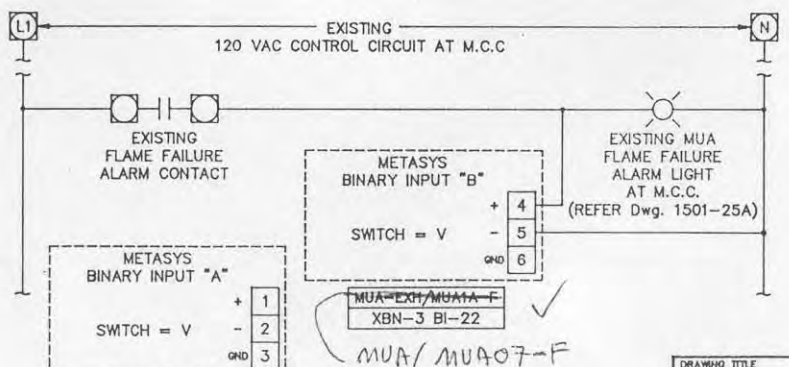
TERMINAL ARRANGEMENT FOR FAN STATUSES WIRED TO INPUT "A" (REFER Dwg. 1501-25C)



MUA-EXH/MUA-A-S
XBN-3 BI-10 ✓
MUA/MUA07-S



TERMINAL ARRANGEMENT FOR FLAME STATUSES WIRED TO INPUT "A" (REFER Dwg. 1501-25C)



1MTR	BLOWER MOTOR	
1MC	MAGNETIC STARTER	BLOWER MOTOR
10Ls	THERMAL OVERLOADS	BLOWER MOTOR
T1	LINE/110VAC TRANSFORMER	FOR CONTROL CIRCUIT
TS1	SERVICE ON/OFF SWITCH	AT MUA MAIN CONTROL PANEL
EPS-1	EXHAUST PROVING SWITCH	FIELD SUPPLIED AND INSTALLED
1CR2	LOCKOUT RELAY	N.O. CONTACTS
2MTR	DAMPER MOTOR	
1LS	DAMPER END SWITCH	DAMPERS MUST BE FULLY OPEN TO ALLOW BLOWER MOTOR TO START
1M1	MAGNETIC STARTER	N.O. AUXILIARY CONTACTS
1M	STARTING RELAY	BLOWER MOTOR
20Ls	MAGNETIC STARTER	N.C. AUXILIARY CONTACTS
SW-3	SUMMER/WINTER SWITCH	FIELD SUPPLIED AND INSTALLED
HLATS	HI LIMIT AIR TEMP SWITCH	165°F MANUAL RESET
LAPS	LOW AIRFLOW DIFF. PRESS SWITCH	LOCKS OUT BURNER ON LOW AIRFLOW
HAPS	HIGH AIRFLOW DIFF. PRESS. SWITCH	LOCKS OUT BURNER ON HIGH AIRFLOW
FR1	FLAME ROD	FOR PILOT FLAME
SI	SPARK IGNITION	
T3	110/24VAC TRANSFORMER	
T4	110/24VAC TRANSFORMER	
4MTR	SAFETY SHUT-OFF VALVE ACTUATOR	
1SOL	SOLENOID VALVE	FOR PILOT FLAME
T2	110/6000V IGNITION TRANSFORMER	
5MTR	MAIN GAS VALVE ACTUATOR	
TC	DISCHARGE AIR TEMP CONTROLLER	0 TO 75°F
TSB	TEMPERATURE SENSING BULB	IN DISCHARGE AIR STREAM
CLL	CABINET LOW LIMIT THERMOSTAT	20°F
1CR	LOCKOUT RELAY	
BRK	SA CIRCUIT BREAKER	

LEGEND

- EXISTING M.C.C. OR MUA TERMINALS
- METASYS BASEFRAME TERMINALS

NOTE: TERMINALS 5 & 22, 6 & 21 MAY BE USED FOR CONNECTION OF AUXILIARY SAFETY DEVICES

MAKE-UP AIR UNIT MUA-1A WIRING
TYP. FOR MUA-1B/C, MUA-2A/B/C, MUA-3A/B/C

DRAWING TITLE		FILE: STJPARK	
ST. JAMES BUS GARAGE			
PARKING BAY			
MUA-1A/B/C, 2A/B/C, 3A/B/C			
WIRING DETAILS			
PROJECT	NO. REVISION-LOCATION	ECN	DATE BY
WINNEPES TRANSIT			
METASYS FACILITY			
MANAGEMENT SYSTEM			

SALES ENGINEER		DRAWN		APPROVED	
BH	DM	JHF	BY CR	DATE	02/25/98
CONTRACT NUMBER		90098-0310		DRAWING NUMBER	
				1501-27	